

April 2007

# Upper Beeding Parish Council News

The magazine for the Parish of Upper Beeding, Small Dole and Edburton



## Contact us :

**Chairman:** David Coldwell Tel: 01273 495 808  
**email:** david.coldwell@btinternet.com

**Clerk:** Ingrid Caygill Tel: 01903 810 316  
**email:** upperbeeding.parishcouncil@virgin.net

**Editor:** Stephanie Shorey Tel: 01903 812 913  
**email:** stephanie@redmini.co.uk

## Chairman of the Parish Council

On 16<sup>th</sup> January 2007, John Peake resigned as Chairman of the Parish Council. David Coldwell was elected as the new Chairman at the Council meeting on 6<sup>th</sup> March 2007.

**Southern Water has announced that due to the continued above average rainfall, the hosepipe ban has been lifted.**

## A Whole New Way to Contact your Local Police

If it's an emergency or to report a crime as it's happening, dial 999 and ask for the police - the same way as ever.

For other crimes and urgent matters, there's still the central 0845 60 70 999 number to call Sussex Police.

However, if the matter's not urgent and you'd like to find out who the officers for your neighbourhood are, along with how to contact them, there's now a whole new way to get in touch.

Go to **www.sussex.police.uk** – type in your postcode and you'll now find the names and photographs of all your local neighbourhood officers. Click on their pictures and you'll see their personal profiles and contract details.

You can contact them either by sending an email or by leaving them a voicemail message, simply by phoning the 0845 60 70 999 number and using the individual extension number provided.

In addition to photographs and contact details for every Police Community Support Officers and Neighbourhood Specialist Constable in Sussex, the pages also contain a monthly 'What's happening in your area?' community update, regular news flashes for the district, details of upcoming street briefings, up-to-date information about how local police are doing and details about your nearest police station.

## Other useful contact numbers

**Neighbourhood Wardens:** Paul Sweeney 07734 387 888; Gillian Carlow 07734 387 889; office 01903 813 236. Have you ever thought of becoming a Junior Neighbourhood Warden? Please contact Gill or Paul.

**If you witness a crime in progress – dial 999.** Crimestoppers (confidential service): 0800 555 111

**Non-emergency calls** to Sussex Police: 0845 60 70 999 or e-mail: **contactcentre@sussex.police.uk**

**Faulty street lighting:** Telephone 08457 581 622 or e-mail **scc.solve@edfenergy.com** or on line at **www.westsussex.gov.uk** and click on 'fault reporting'

A warm welcome to our new Police Community Support Officers Carol Boniface and Catherine Corbett who joined in January – no doubt you will have seen them walking round our villages.

To contact them – tel: 08456 070 999 extension 22095 (voicemail)

## Neighbourhood Wardens news

Paul and Gill will be organising a visit to Chichester Junior Wardens scheme to see how they run it with a view to start up an Upper Beeding Junior Warden scheme. Also if you see any graffiti, please tell the Wardens so that they can organise a team to 'blitz' the area.

## A good year

2006 was a very good year for volunteering.

In addition to the thousands of people already volunteering across the district, the Horsham Volunteer Centre has seen many more people getting involved in local community activities.

The Volunteer Centre would like to say 'thank you' to all those that have taken up a volunteering opportunity during 2006, making a difference to the lives of others and hopefully bringing its' own rewards. Without Volunteers, many local organisations would not be able to operate. The work carried out by volunteers is crucial in sustaining many of the wonderful services provided across the area and gives immeasurable benefit near and far to individuals and whole communities.

2006 has also seen a number of local employers embark upon Employee Volunteering. Enthusiastic teams from local companies have helped with various projects ranging from Guide hut staining, garden makeovers, internal decorating and painting of hospital garden furniture to name but a few! If you work with a team of people who you believe may like to help out within the community we would love to hear from you.

In addition, if you are involved with an organisation that may need help on a similar type of project to those mentioned, please do let us know. We will do all we can to provide help in making a difference to your community.

Horsham Volunteer Centre, open Monday – Thursday 10:00 – 16:00 Telephone 01403 232 100 or email [horshamvb@care4free.net](mailto:horshamvb@care4free.net)



### Beeding and Bramber Local History Society

Meetings start at 7:45pm in the Beeding and Bramber Village Hall – non-members can attend for £1.

Wednesday 4<sup>th</sup> April – "Archaeology in Sussex", an update from Steven Simons

In May, June and July outings are arranged to places of interest for members only. Membership costs £5 for individuals and £9 for two people at the same address.

Details from Pat Nightingale – tel: 01903 812 847.

### Small Dole Summer Show

A well attended general meeting was held in November to discuss the future arrangements for the summer show. Many interesting ideas were put forward for improving the show, and these will be examined by the committee. One suggestion was that we hold the show in July before the end of the school term, to encourage a greater participation by children. The time scale will not make this possible for 2007, but will be considered for 2008.

The summer show this year will be on Saturday 18<sup>th</sup> August. We welcome show entries – there are no membership restrictions. We recommend that entries are planned well in advance, especially for flowers and vegetables. Free copies of the show schedule will be available from the end of February – call 01273 492 855 or email [f.whitehead@btinternet.com](mailto:f.whitehead@btinternet.com)



**West Sussex Fire & Rescue Service / Community Fire Service: home fire safety checks  
and Free Smoke Alarm!**

**For this service from your local fire fighters, ring freephone 0800 32 86 487**

### The Bridge Inn

**Now serving fresh stonebaked 9 inch pizzas.**

**Reasonably priced**

**Take away or eat in**

**Only served Fridays, Saturdays and Sundays to ensure freshness and quality**

**Come and try one or two!**

**Tel: 01903 812 773**

Upper Beeding Parish Council website – [www.westsussex.gov.uk/upperbeeding](http://www.westsussex.gov.uk/upperbeeding)

## Young people invited to get 2Wheels+

YOUNG people in need of local transport are being invited to get involved in a scheme called '2Wheels+'.

The scheme is specifically available to help young people get access to employment, training and education. It is run by Horsham District Council and works by offering young people a moped on a short term loan to help them travel to and from their place of education, training or work. The moped is available to 16 -19 year olds and is loaned while the young person tries to achieve a longer term solution to their transport needs, such as learning to drive or saving up to buy their own moped.

Typically, the moped is offered on loan from the Council for six to ten months while the person borrowing it makes a financial contribution towards the costs. The whole scheme is monitored by the scheme's co-ordinator, Lynne Murray.

Compulsory basic training and the necessary safety clothing for the moped is provided by the Council as part of the package, which also includes insurance.

Lynne Murray at Horsham District Council, said: "Difficulties with local transport can cause major barriers for people when travelling to places of employment or education. Young people in rural areas, in particular, can face situations where without a job they cannot afford to buy a car or motorcycle and without transport of their own their choice education, training or employment is limited."

For more information on 2Wheels+ contact Lynne Murray, the co-ordinator, on 01403 215 631, email: [lynne.murray@horsham.gov.uk](mailto:lynne.murray@horsham.gov.uk)



## Henfield Theatre Company

### *"My Fair Lady"*

Henfield Theatre Company will be proudly presenting "My Fair Lady" by Lerner and Lowe, the musical play based on "Pygmalion" by George Bernard Shaw on 16<sup>th</sup>, 17<sup>th</sup>, 18<sup>th</sup> and 19<sup>th</sup> May 2007, all performances commencing 7:30pm, at The Henfield Hall.

Directed by Tony Hawthorne, with musical direction by Lesley Barnes, Henfield Theatre Company offers a large and strong cast, full period costumed classic not to be missed.

Tickets at £8 and £6 will be available from the Box Office at Henfield Furnishings, High Street, Henfield, BN5 9DB (tel: 01273.492204) from 10:00am on Tuesday 24<sup>th</sup> April 2007.

## Adur Branch of Save The Children – Fund-raising events

### History and Nature Trail

On Sunday June 24<sup>th</sup> from 2:00pm, starting at the Bevan Room, opposite St. Peter's Church and finishing with tea at the same venue. We will give you a route to follow at your own pace and you will have all sorts of things to look out for. The details are still to be arranged, so look out for our notices nearer the time. If anyone would like to help on the day, please phone 01903 812 847.

## Small Dole Tuesday Club forthcoming events

10<sup>th</sup> April Party : Fun Bingo

8<sup>th</sup> May To be arranged

12<sup>th</sup> June Flower arranging

Please contact Stella Kelly for details. Tel: 01903 815 455

## A History Of Beeding 5 – The Iron Age

The Iron Age lasted from approximately 700BC until the coming of the Romans in 43BC. At first life continued much as it had in the Bronze Age, with people living in scattered farmsteads on the Downs and increasingly on the coastal plain. But from about 700BC groups of displaced people began arriving from the continent, bringing with them the knowledge of iron-making. As iron tools were much stronger than bronze and iron ores were easily available, there was a rapid transition to the use of iron for tools, but bronze was still preferred for ornaments and fittings. Settlement sites are known near us on the Downs on both sides of the Adur. To the east there was a settlement and field system on Tenant Hill, just outside our parish and another on Thundersbarrow Hill. Cross-dykes (banks and ditches) separated one territory from another and have been recorded on Beeding Hill and Tottington Mount.

To the west, the site at Park Brow, between the Steyning to Sompting road and Cissbury Ring, has given us the best insight into life at this time. Excavations here showed that the Iron Age people lived further down the slope than the Bronze Age people before them, but used the same square fields. Each of these was of a size that could be ploughed in a day using a simple plough, known as an ard, and two oxen. The ard had no mould-board to turn the sod and would be dragged across the field in one direction and again at right angles, to adequately till the soil. Over the years, the ploughed soil gradually drifted downhill to form a lynchett (a large bank) at the bottom edge of the field. Many of these can still be seen all over the Downs – there are some along the Henfield Road opposite the waterworks.

Wheat and barley were grown and with Autumn and Spring-sown varieties available, two crops were possible. Corn for immediate consumption was dried and parched before being stored in jars and then ground with a saddle quern to make flour. The remaining corn was placed in a pit in the ground which was capped with clay and possibly had a shelter of some sort over it. When no longer suitable for corn, the pits were filled with rubbish, which has now also provided useful information. The bones of sheep, oxen, horses and pigs show that land had been cleared for pasture, a process that was more efficient with iron tools. Finds of spindle whorls, loom weights and a bone weaving comb show that sheep were kept, not just for their meat and their milk, but also for their wool, which was spun and woven on site. Other finds were an iron ring-headed pin and a silver ring from Switzerland dated to around 300BC, which is probably one of the earliest silver objects found in this country. A cremation in a Hallstatt-type urn is one of the few burials known from this period. Evidence from elsewhere shows that wheeled vehicles such as farm wagons were in use.



The early pottery was a coarse round-shouldered jar with finger-tip decoration. From about 400BC, so-called saucepan pots decorated with curvilinear designs were made and have been found locally at Slonk Hill, near Shoreham and at Kingston Buci.



The incoming people also introduced the idea of building hilltop enclosures, such as the ones at Thundersbarrow and Chanctonbury. These early “forts” do not seem to have been inhabited and were perhaps just used seasonally for the rounding up of cattle and sheep prior to slaughter. After 400BC the early forts

went out of use and were replaced by fewer, larger strongholds such as the ones at Cissbury and the Caburn (near Lewes) which were inhabited. They were effectively walled towns, with houses and artisans workshops, producing goods for trade with the surrounding farmers and probably also for export. The building of such hill forts would have required collective effort and some-one with the ability to organise it, showing that people must by now be organised into tribal groups under a chieftain. The main weapon was the sling, stockpiles and pits of pebbles being found within the hillforts to use with them, but who the enemy was is not clear.

Strangely, all the hill forts to the west of the Adur fell into disuse about a century before the arrival of the Romans, whereas those to the east, which were also of a different building style, continued in use right up until their arrival. So the division between East and West Sussex goes back right to this time, perhaps because the two areas were under different rulers.

An ancient farm has been reconstructed at the Queen Elizabeth Country Park, Butser so that more can be learned of Iron Age life. To find out more, visit – [www.butser.org.uk](http://www.butser.org.uk)

We have been gradually leaving the prehistoric behind and entering the historic period. Next time we meet the Belgae, who softened us up for the arrival of the Romans.

### References:

1 A History of Sussex, by J R Armstrong; 2 Collins Field Guide to Archaeology by Eric S Wood; 3 An Historic Atlas of Sussex, edited by Kim Leslie; 4 Archaeology in Sussex to AD 1500, edited by P L Drewett; 5 Sussex by E Cecil Curwen

Pat Nightingale, February 2007

### **Small Dole Flower Power**

We would like to thank those who so kindly contributed to the hanging baskets this year. The comments we had (when we were watering) were very much appreciated, so we do now think that we really are enhancing the look of the village!! Moreover, we are always on the look-out for volunteers to help us with the watering. If you can spare only one hour per week, that would be fine. Any offers are most welcome.

Please contact Iris Banfield on 01273 464 361 or Carol Elliott on 01273 492 272.

Donations towards the cost of providing the wonderful displays throughout the year would be gratefully received. With your help we can continue to provide our colourful displays which have received many favourable comments.

### **Small Dole Flower Power**

Name:

Address:

I / we would like to make a donation and enclose £

Alternatively, I / we would like to help with watering / with planting up

### **Beeding in Bloom Committee**

We are really pleased to tell you that there will be hanging baskets again in 2007. We have placed a contract with Ferring Nurseries who are able not only to plant up our baskets but also to water them throughout the summer using grey water. As South East in Bloom expect maximum impact, our chosen colour scheme for 2007 will be a mix of mainly shocking pinks with some white and blue. Our Spring planting has included mixes of cyclamen and pansies and/or polyanthus with underplanting of narcissus and crocus.

Would you be prepared to sponsor one of our hanging baskets again this year? We really need your support with funding our work. The cost to plant up each of the baskets is £12. With your help and support we have in previous years won Silver or Silver Gilt Certificates and we are keen to continue with our success in 2007. If you are able to sponsor a basket or make a donation of any amount towards one, please enclose it with the slip below and return it in an envelope addressed to 'Beeding in Bloom' either to Falcons, High Street, Upper Beeding or to Beeding in Bloom c/o Beeding News in the High Street. Cheques should be made payable to Beeding in Bloom. Thank you.

### **Beeding in Bloom Committee**

Name:

Address:

I / we would like to sponsor a basket and enclose £

Alternatively, I / we would like to help by .....

### **Beeding And Bramber Horticultural Society**

By the time you read this, our Spring Show will be over. We hope you came along and enjoyed the floral display. Perhaps you wished you had entered some of your own flowers? You will have another opportunity later in the year.

On Saturday 25th August we will be holding our 35th Summer Show in the Village Hall from 2 till 4pm. Admission is 75p. As well as flowers, there will be floral art, vegetables, cookery, handicrafts and photography on display. Children have their own section to enter. For details of how to put in an entry and all the different categories, you need to obtain a copy of the Society's Show Book from John Tompsett, tel: 01903 813 541. Membership of the Society is only £2.

John is now the reluctant Chairman of the Society, having taken the job over at the last AGM. We need more people to help run the Society and to ensure that our Shows continue. Please have a word with John if you could help.

We are all grateful to Joe Parsons for his 25 years as chairman of the Society. For much of that time, he and his wife, Gladys, also organised and ably managed our annual seed and plant order from one of the major companies. At the age of 86, Joe has only just given up the allotment he has held for 59 years, his only regret being that he could not go on for 60! For some of that time, he was the allotment-holders representative at parish council meetings. He always gave support to new allotment holders and was ready to share his knowledge of cultivation.

We know that Joe will miss his allotment and hope that he still gets much enjoyment from his garden at home.

Pat Nightingale

## Beeding and Bramber Village Hall News

The Village Hall Fundraising Committee would like to thank everyone who gave their time for the Adult Christmas Party. They worked hard all day to provide food and entertainment for their guests. The number of people attending the Christmas party has been declining and this year (2007) the Committee has decided not to hold a similar event. We need feedback from those who used to attend but decided not to this year and also from those of you who never appear and from those who attended this year. Why did some of you not attend? What can we improve? What are your suggestions for the Party in future years? Replies please in an envelope addressed to The Fundraising Committee which can be posted through the Village Hall letter box.

This year's fete is on 16<sup>th</sup> June. Already booked are skittles which Horsham District Council's Community Events Service are providing, Boing Boing for the children, also a professional Clown. More will be revealed nearer the date. Don't forget the celebrity opener!

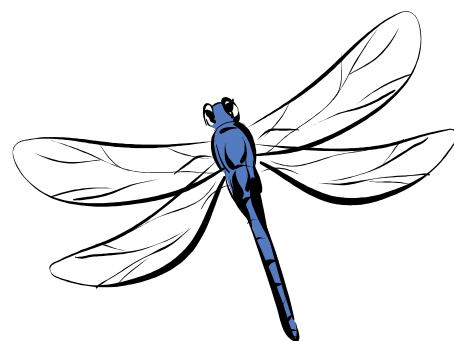
We need stallholders for the fete as well as villagers who would give us a few hours on the day to help with the running of the fete. If you are able to help, please let us know by ringing 01273 493 184 and leaving a message or drop a note through the Village Hall letterbox. Without community involvement in fundraising the Village Hall would not be able to function as efficiently as it does.

Finally, have you visited the Hall recently? Do you know about Karate, Short Mat Bowls, Thursday Club, Playschool, Local History Society, Horticultural Society and all the other happenings at the Hall? This is a facility that the villagers of Upper Beeding and Bramber should be proud to have available for their use.

## Saltings Field Conservation Group

The Annual General Meeting will be held in the Beeding and Bramber Village Hall on Tuesday, 24<sup>th</sup> April in the large meeting room. The business meeting will commence at 7:30pm and will be followed by a refreshment break before a speaker from the Sussex Wildfowl Trust will give an illustrated talk on Sussex hedgerows. Entrance is free and all are welcome.

The now established and very popular Early Morning Bird walk will take place on Saturday, 28<sup>th</sup> April and will start from the main gate in Saltings Way at 6:00am. The walk will be led by Keith Noble, recently retired after many years with the RSPB and will last for around 2 hours. An optional full English breakfast at the Castle Hotel, Bramber is offered at a cost of £6 and must be pre-booked by calling the Hon Sec David Geere on 01903 813 814 before Thursday 26<sup>th</sup> April.



## News from Upper Beeding Primary School



Upper Beeding Primary School is proud to have gained the 'Active Mark' which is awarded to schools who demonstrate their commitment to sport and active participation in a whole variety of physical activities. This goes alongside with the School's other marks of achievement: Artsmark Silver, Investors in People and Chartermark as a measure of the School's commitment to achieve excellence in every area.

Upper Beeding Primary School is delighted to have achieved top place in the West Sussex Primary Schools league table for value added. This means that last year's Year 6 pupils made the most progress from KS1 to KS2 SATs results in the whole County. Congratulations to all pupils and staff whose hard work produced this excellent result.

## Lunchtime and After School Clubs and Activities

Did you know that the School offers lunchtime / after school activities such as - Beginner, Middle and Advanced Recorders, Computers, Dance Club, Homework, El Club Espanol, Country Dancing, Football for boys and girls, Karate ?

FUBS fundraising - if you want to get rid of your old mobile phone, please don't throw it away! FUBS will recycle and raise precious funds. Any unwanted presents, please pass them to FUBS. FUBS is trying to raise money for Class Wish Lists - each class and teacher will provide FUBS with a few ideas for items they would really, really like in their classrooms but which are just not affordable through the school budget. Contact Lou in the school office on 01903 812 288.

## Local Democracy and YOU

Are you confused about who does what in local government? Local government in rural England is split between county council, district council and either town or parish council.

### What do Councils do?

Parish or Town Councils are responsible for - open spaces & recreation grounds; children & young people's play facilities; bus shelters; litter; allotments; burial ground & cemeteries; encouraging local tourism; consulting on planning applications; helping to prevent crime; community or village halls.

District Councils are responsible for - local planning; housing; waste collection; environmental health; parks; leisure and recreation; tourism; council tax collection; cultural facilities & arts development.

County Councils are responsible for - children's services including education, social services and youth service; adult services including social services and adult education; housing; roads and road maintenance; waste disposal; libraries; public footpaths; strategic planning; environmental planning; fire service.

### What do councillors do?

Councillors are members of these councils and take decisions which can affect the lives of every resident. Most councillors are volunteers, some have full time jobs and some in certain positions get paid an allowance. There are a lot of councillors who spend almost all their time doing their duties. Councillors try to consider the interests of all the residents in their area, not just those people who elected them.

What is a Council Officer? Officers are paid employees of the Council. In parishes, this is usually only one person, the Parish Clerk. Officers carry out the services as instructed by the Council. They also produce information (reports) to the various committees or Council. These reports give the information necessary for councillors to make decisions on various aspect of services, everything from for instance allotments to recreational facilities, procedural advice to youth services.

## Parish Council Precept and Budget

The Parish Council Budget for 2007/8 was set in December at £122,353, an increase of £8,683 over the previous year, or 7.6%. The reasons for the increase are (1) to allow for the elections in May, and (2) a reduction in the subsidies we had for the neighbourhood wardens. In order to prevent a much bigger increase, the council has held back on certain items of capital expense, although all normal services are unaffected. The table below illustrates the budget/precept relationship in recent years:

	2002/3	2003/4	2004/5	2005/6	2006/7	2007/8
<b>Budget</b>	£94,388	£93,566	£104,526	£105,380	£113,670	£122,353
<b>Precept</b>	£92,500	£92,500	£92,500	£92,500	£95,000	£112,000
<b>Deficit</b>	£1,888	£1,066	£12,026	£12,880	£18,670	£10,353

For the year ahead the precept upon the District council has had to be increased by substantially more than the budget and the reasons for this are more complex. As you can see from the table above, the precept from 2002 through 2005, 4 years, remained unchanged despite the fact that the budget in that time rose sharply. It was during this period that the neighbourhood wardens were introduced.

The Parish Councils of the time felt that the increases could be absorbed by drawing down on reserves. In 2006/7 the precept was increased to £95,000 but this left the Council in a deficit situation. The Parish Council has now had to increase the precept to £112,000 as it is clear that the Council can no longer continue to draw on reserves which are now down to the minimum recommended levels. Certain items of a capital nature have been deferred so that reserves can be preserved. A deficit remains and will have to be eliminated next year.

It is noteworthy that if the precept had been increased annually by 4% since 2002, we would not now be asking for such a big increase other than to cover the election costs, over which we have no control. Equally had the council increased the precept when the Wardens were introduced, the current situation would not have arisen.

Where does the money go? These are the big items of expenditure: Salaries and Administration £42,900, Maintenance and Repairs £13,500, Grass Cutting £13,000 (includes the sports field), Neighbourhood Wardens £19,000, Capital Expenditure £13,000; plus a host of smaller items.

The Parish Council is well aware of the need to balance its books in a business-like manner and regrets that it now needs a rise in the precept.

# The Parish of Upper Beeding



## Annual Parish Meeting

**For the residents of Upper Beeding Parish with Small Dole and Edburton**

**To be held on Wednesday, 25<sup>th</sup> April 2007 at 7:00 for 7:30pm in the Beeding & Bramber Village Hall, High Street, Upper Beeding**

- 7:00pm Refreshments
- 7.30 pm Welcome by the Chairman of the Parish Council
- Guest Speaker
- 7:35 – 8:15pm PCSOs, Neighbourhood Wardens or anybody else of your choice
- 8:20pm Annual Parish Meeting

### Agenda

- 1 Apologies for Absence
- 2 To approve and sign the minutes of the Annual Parish Meeting held on 3<sup>rd</sup> May 2006
- 3 Agenda items put forward by Parishioners – \*  
Parking on grass verges; Parking on dropped kerbs; Parish Council budget and precept
- 4 Launch of Parish Action Plan
- 5 Open Forum

**\* This is YOUR meeting - please tell the Clerk of anything you feel should be included in the agenda for discussion**

\*\*\*\*\*

**I would like the following item to be included in the agenda:**

**Please return to the Clerk by 15th April 2007**

## Hire Charges 1st April 2007 to 31st March 2008

### Sports Hall

The Sports Hall is available for sporting and non-sporting activities. The main hall is marked out to give a full size playing area for Badminton, Volley Ball, Hand Ball etc. and is equipped with heated changing rooms, toilets and showers. There is also wheelchair access.

The Lounge is furnished with easy chairs, coffee table, TV and pool table. The Kitchen is equipped with microwave oven, hob, fridge and electric kettle.

Hire charges include main hall, lounge, and kitchen areas, toilets and changing rooms.

Monday to Friday	9:00 am to 6:00 pm	£6 per hour
Monday to Friday	6:00 pm to 9:00 pm	£8 per hour
Weekends (Sat+Sun)	9:00 am to 10:00 pm	£9 per hour

\*\*\*\*\*

### Tennis Court

Rates of hire:

1	Adults	£4.50 per hour for up to 4 adults
2	Juniors	£2 per hour for up to 4 juniors (under 16's)
3	Multiple Sports Users	£8 per hour during daylight hours £10 per hour evening (floodlit)

**To book the Hall or Tennis Court, please contact the Booking Clerk**

**Julie Bakter on 01903 816 790**

### Amenities News

The Amenities Committee is principally responsible for street lighting, play areas, grass cutting, bus shelters, allotments, neighbourhood wardens and trees. This is paid for through our portion of the precept, which was set at a special meeting of the Council in January. The precept is based upon our budget for the forthcoming year, which in turn is based upon the previous year's budget plus estimated increases and other costs.

We are very conscious of the high precept set by the Council every year. The level of precept is in part due to the size of the Parish and the lack of other sources of income for the Council. (There may be other parishes of similar size but they have a greater population.) The Council agreed to cut back its spending for the forthcoming year. However, to balance our books we will need to increase the precept again, and then annually at the projected rate of inflation. The new Chairman, David Coldwell, gives a fuller explanation elsewhere in this newsletter.

Parishioners who are concerned or interested in these matters are welcome to our meetings to ask questions or may write to us c/o the clerk. We make every effort to be open in these matters and welcome your views. There is even space on the Council for new members if you are concerned enough!

Vandalism is an unnecessary cost to the Parish. There has been an outbreak of graffiti around Beeding that will cost us hundreds of pounds to clean up. Someone in the Parish knows who is doing it. If you want to reduce the amount you have to pay us to maintain the Parish you could pass any information to the wardens, the police or the Parish Council. All contact details are given at the front of the newsletter.

I would like to remind all dog owners of their responsibility towards others in the parish, too. There is a small minority who do not clean up after their pets and who let them run loose on the playing fields. Please take responsibility for your pets, clean up after them and, if they are untrained, do not let them loose in public! If problems persist the Council may have to use its powers of enforcement, which can result in fines of up to £1000.

To end on a happier note, so far 13 trees have been planted by the Parish Council on verges around the Parish as part of our tree-planting plan. A further three have been planted by Highways Rangers and more are planned. Due to an under-subscription to the WSCC Trees for Shade scheme we received a complete reimbursement of our costs. The principle agent of this scheme was our tree warden, Mrs Steedman, whom we all owe a vote of thanks.

## Beeding In Bloom - Baskets Are Back

### Help Us Make 2007 Our Best In Bloom Yet

Let us really impress the South East in Bloom judges on Monday 2<sup>nd</sup> July. You can help by getting involved. We could really do with some practical help and you do not have to join the Committee to be one of us.

Ferring Nurseries are going to plant up and water our baskets this year and if you have seen what they do for Worthing then you know we are going to have something really special. Our colour scheme for the baskets will be two shades of bright pink with some white and we will plant up our containers with bright pinks, white and some blue.

Please make the most of your front gardens. Come on all the Pubs, Shops and Business Premises put on a show this year and you could also win an award for Best Decorated Commercial Property.

Our **Annual Garden Competition** will be held in July. This year, as well as our usual categories: -

Best Front Garden; Best Hanging Basket & Container Display; Best Allotment

we are also looking for entries for Best Neighbourhood Award for a group of between three and eight gardens in the same area.

We are planning an **Open Gardens Event** again this year. Please contact us if would you would be willing to open your garden or would like to be involved with this or any of our other events.

To learn more of these events please come to our AGM which is being held at the Beeding and Bramber Village Hall on Wednesday 9<sup>th</sup> May. Our meeting starts at 7:30pm and will be followed by a talk.

Our contact telephone number is 01903 812 366

\*\*\*\*\*

Urgent message from Beeding in Bloom Committee –

We really need your support with funding so that we can continue with our work to make our Village a brighter and more beautiful place to live and visit. Each basket costs £12 to plant up so please can you help us by sponsoring one of these?

If you are able to sponsor a basket or make a donation of any amount towards a basket please enclose it with the slip below and return it in an envelope addressed to –

Beeding in Bloom at either Falcons, High Street, Upper Beeding or c/o Beeding News also in the High Street.

Cheques should be made payable to 'Beeding in Bloom'. Thank you.

Name

Address

I/we would like to sponsor a basket and enclose £

Alternatively, I/we would like to help by

