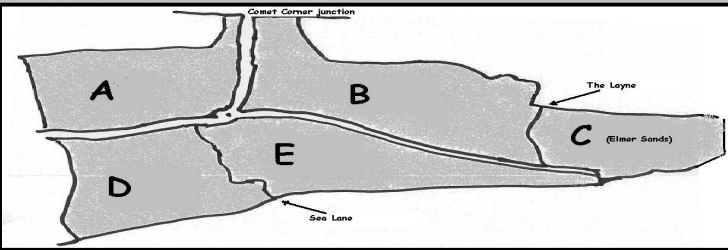
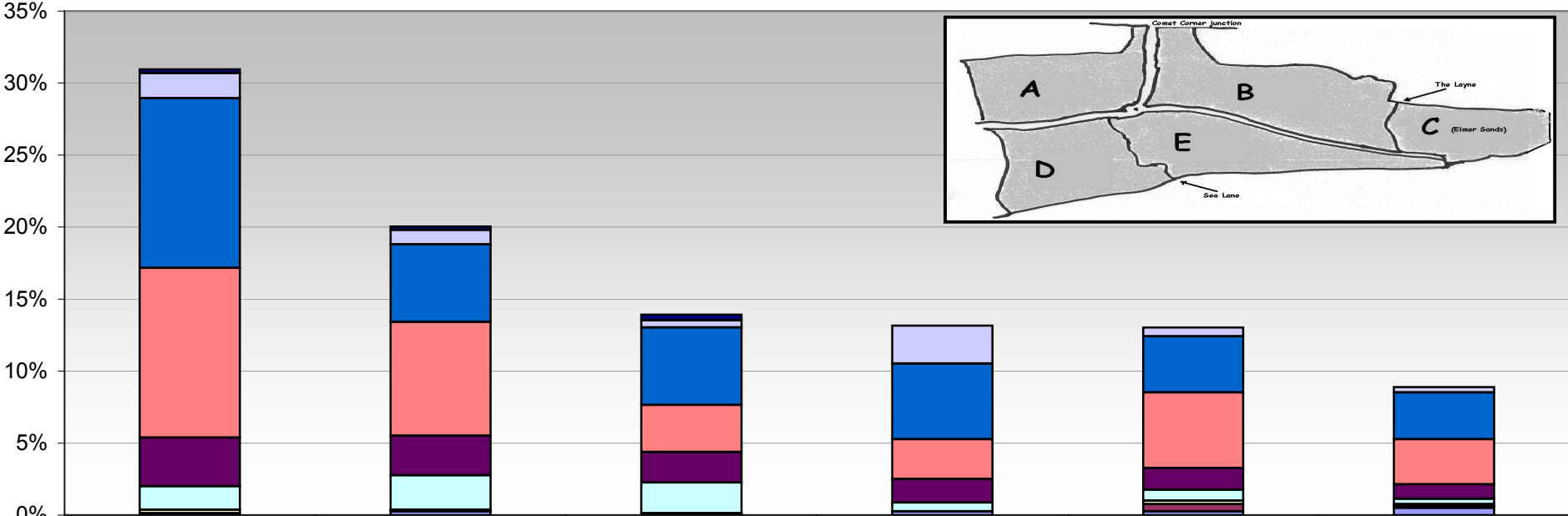


**Middleton-on-Sea
Parish Action Plan
Detailed Results
2004**



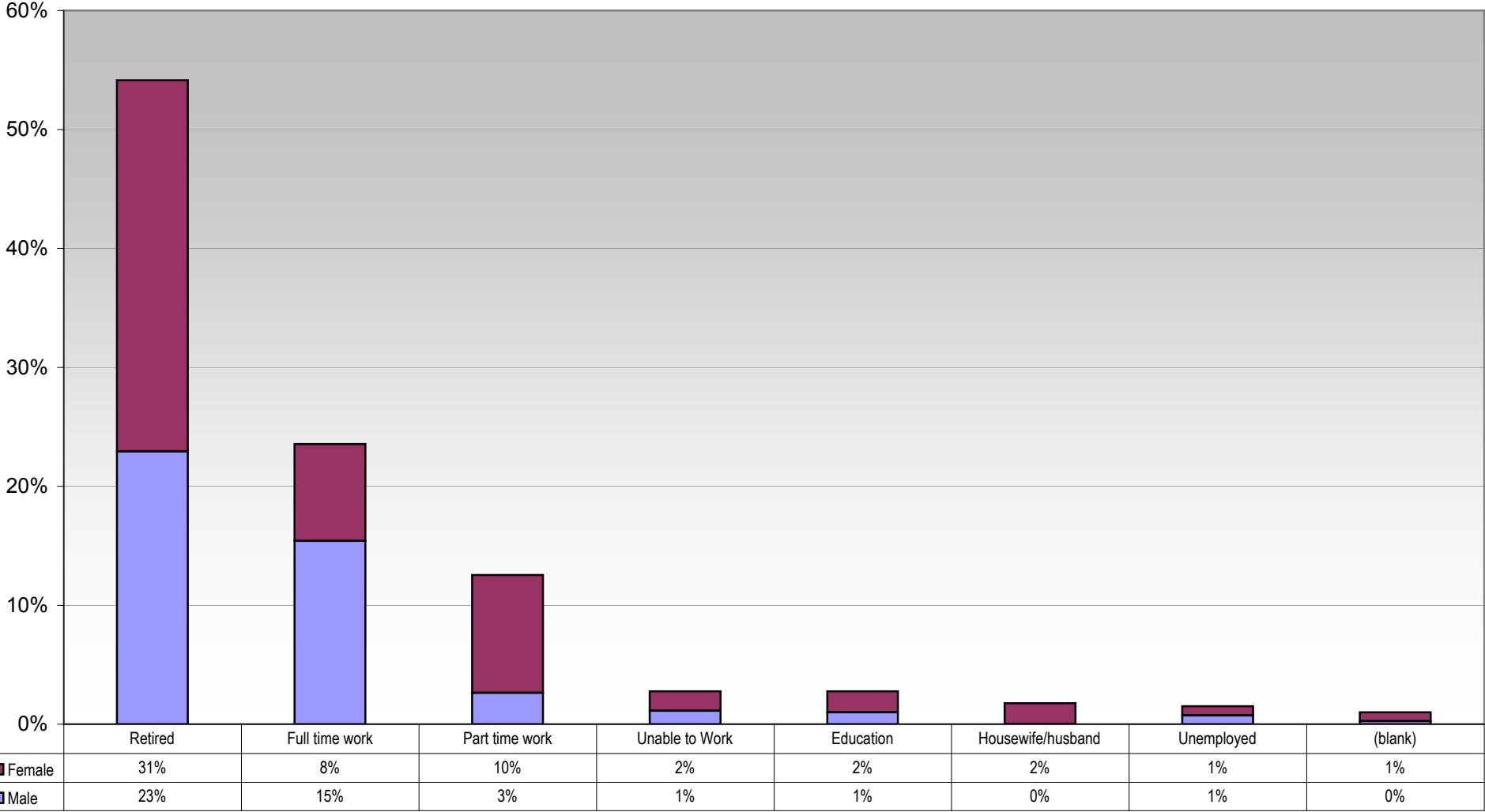
Area by Age Group



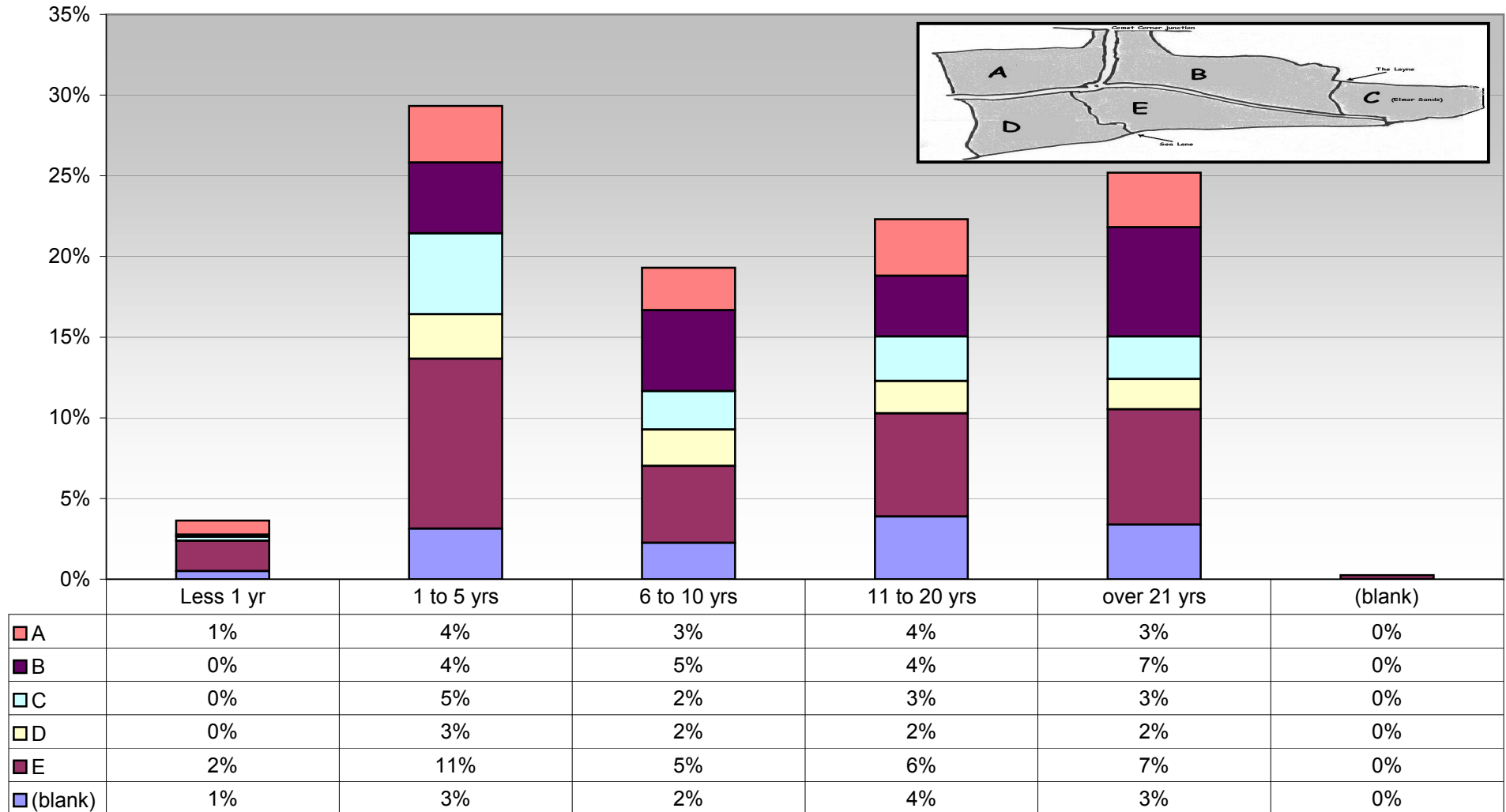
	E	B	A	(blank)	C	D
■ (blank)	0.3%	0.3%	0.4%	0.0%	0.0%	0.0%
■ 81+	1.8%	1.0%	0.5%	2.6%	0.6%	0.4%
■ 65-80	11.8%	5.4%	5.4%	5.3%	3.9%	3.3%
■ 51-64	11.8%	7.9%	3.3%	2.8%	5.3%	3.1%
■ 36-50	3.4%	2.8%	2.1%	1.6%	1.5%	1.0%
■ 21-35	1.6%	2.4%	2.1%	0.6%	0.8%	0.4%
■ 17-20	0.3%	0.0%	0.1%	0.0%	0.3%	0.1%
■ 13-16	0.1%	0.1%	0.0%	0.0%	0.5%	0.1%
■ 6-12	0.0%	0.3%	0.0%	0.3%	0.3%	0.5%

Area

What employment category are you?

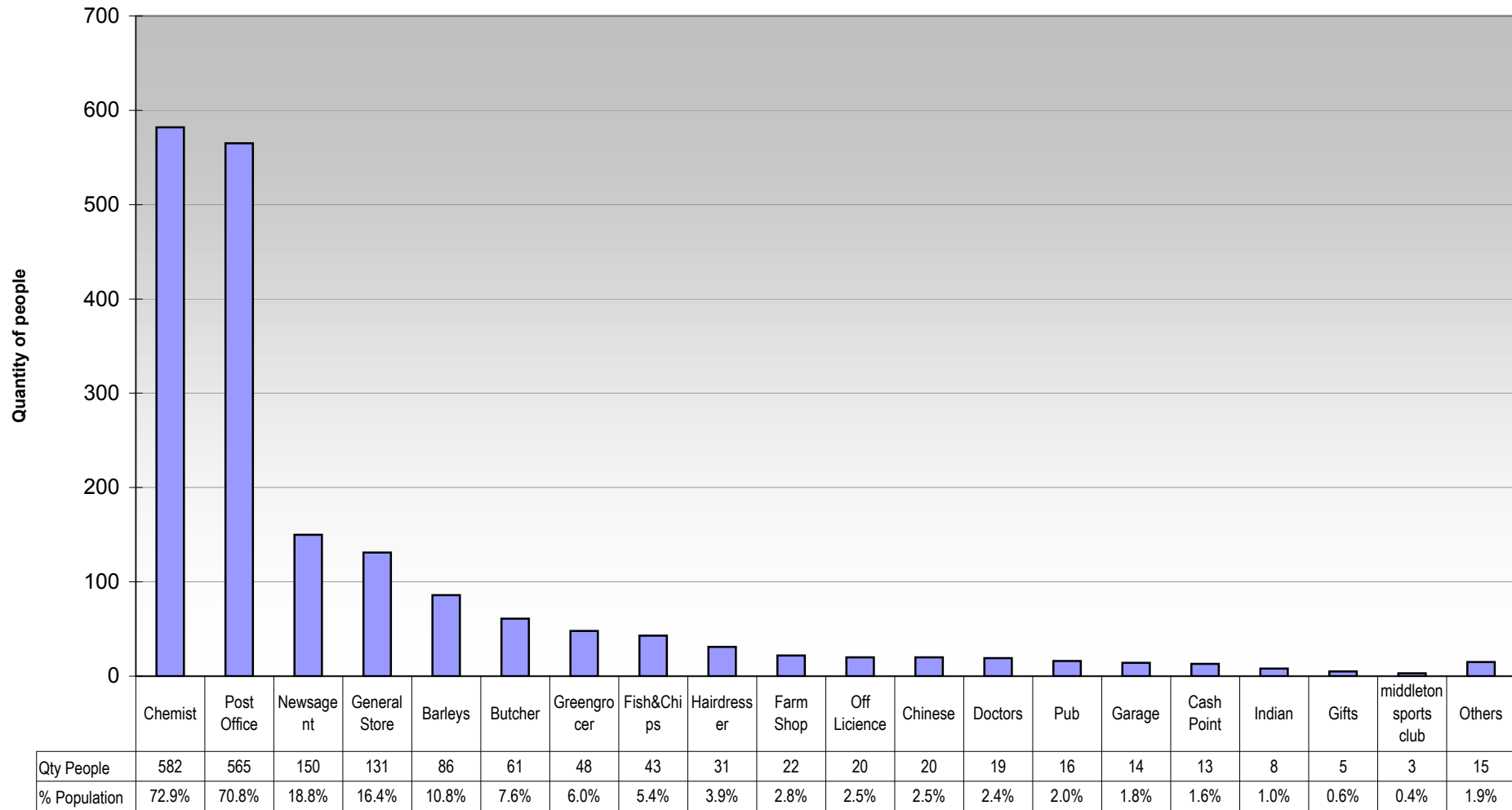


How long have you lived in the Parish of Middleton-on-Sea?

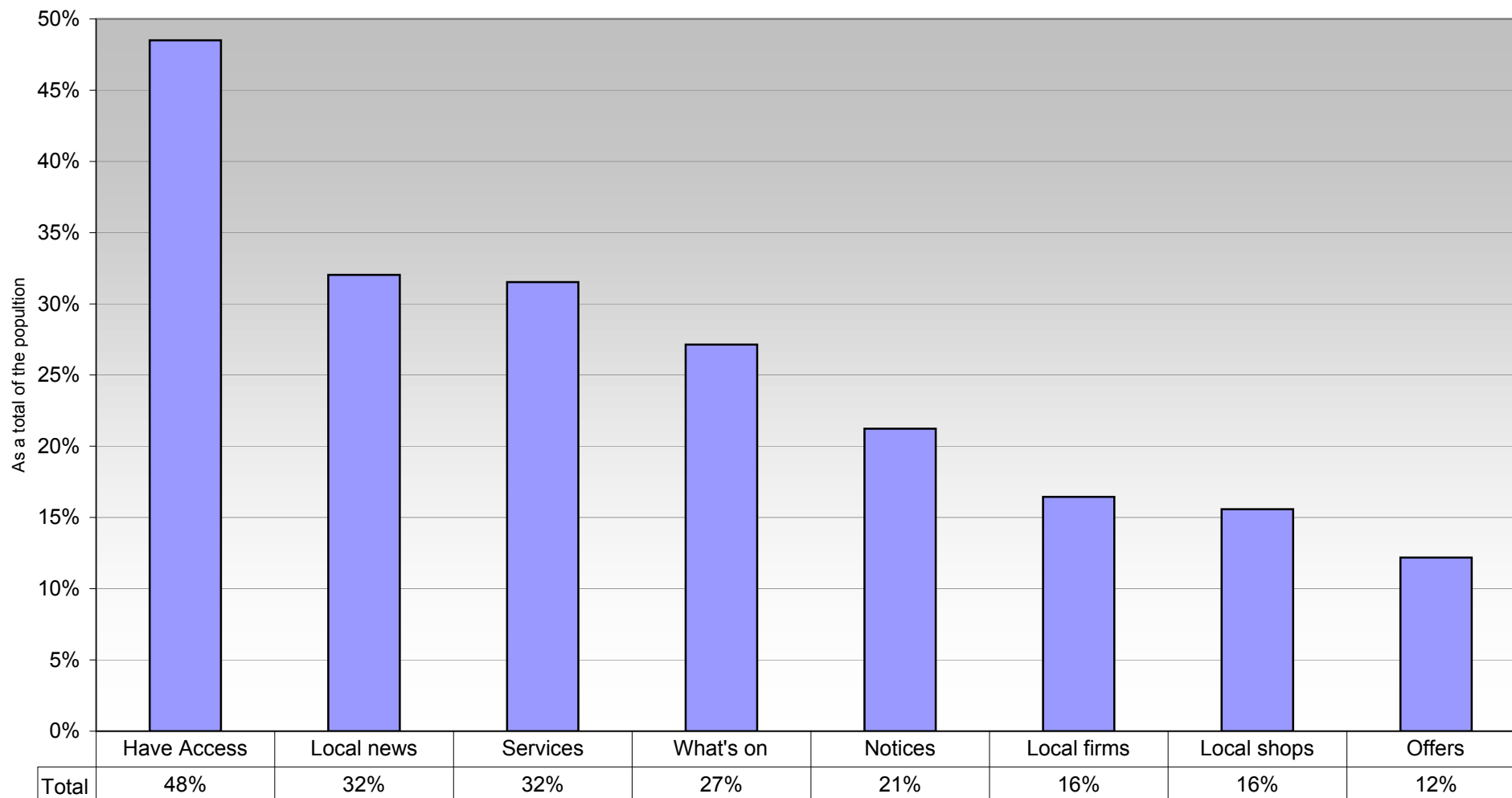


06 Shops Chart

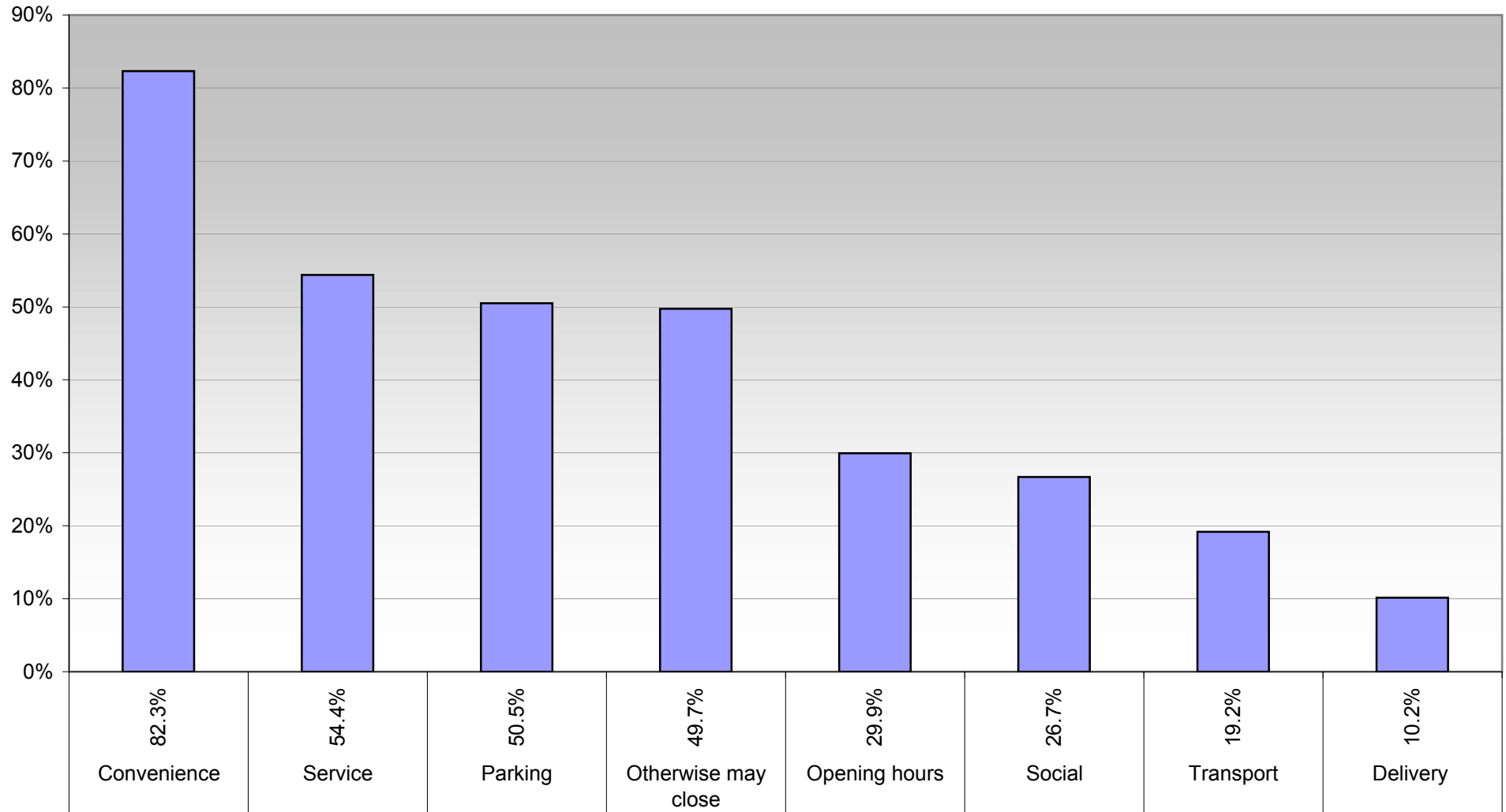
List any shop, service provider or business that you would miss the most if they ceased trading in the Parish? For example Chemist, Post Office, Butcher, etc.



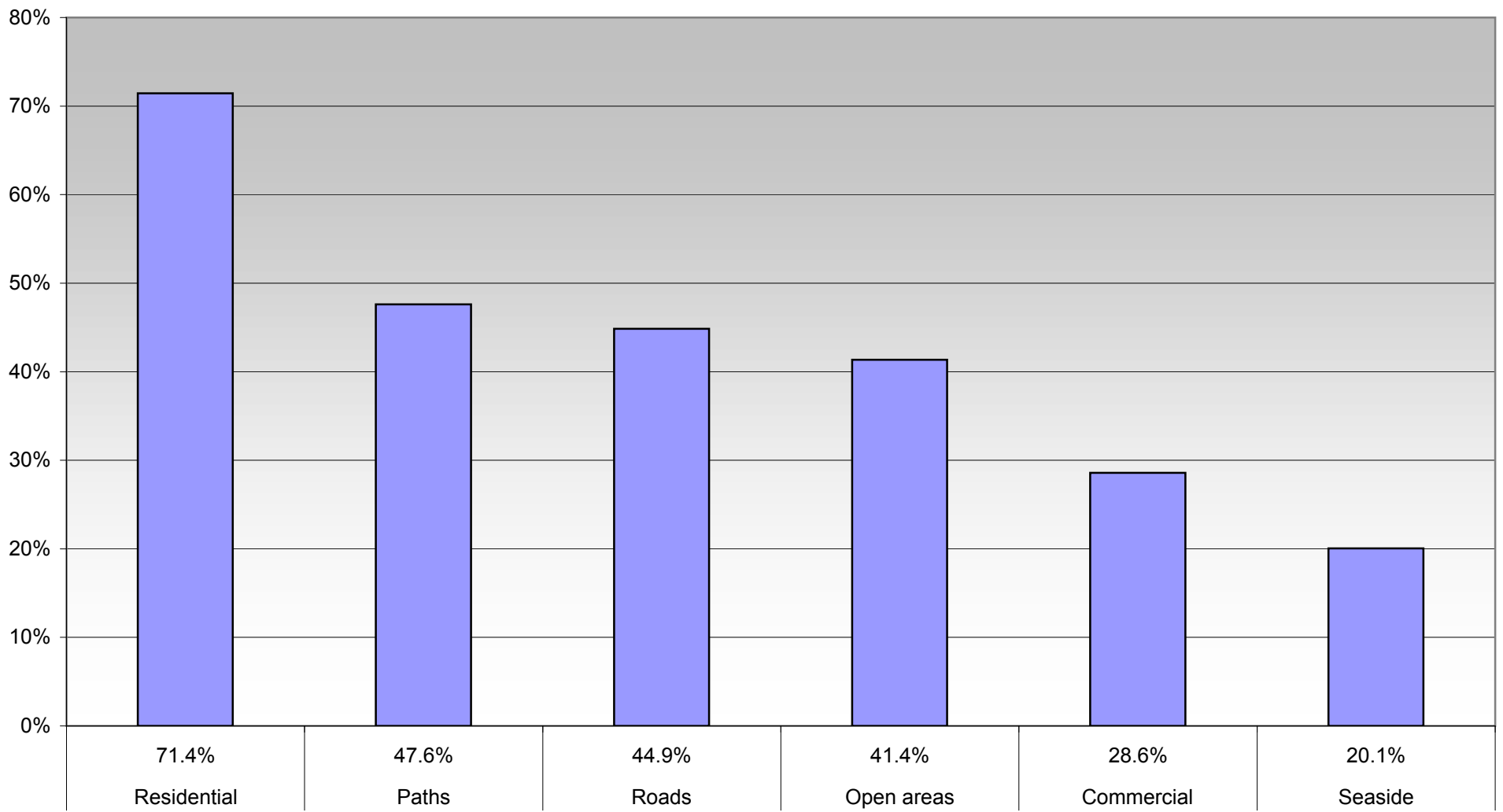
Do you have access to the internet and if there was a dedicated web site for the Parish of Middleton-on-Sea, what would you use it for?



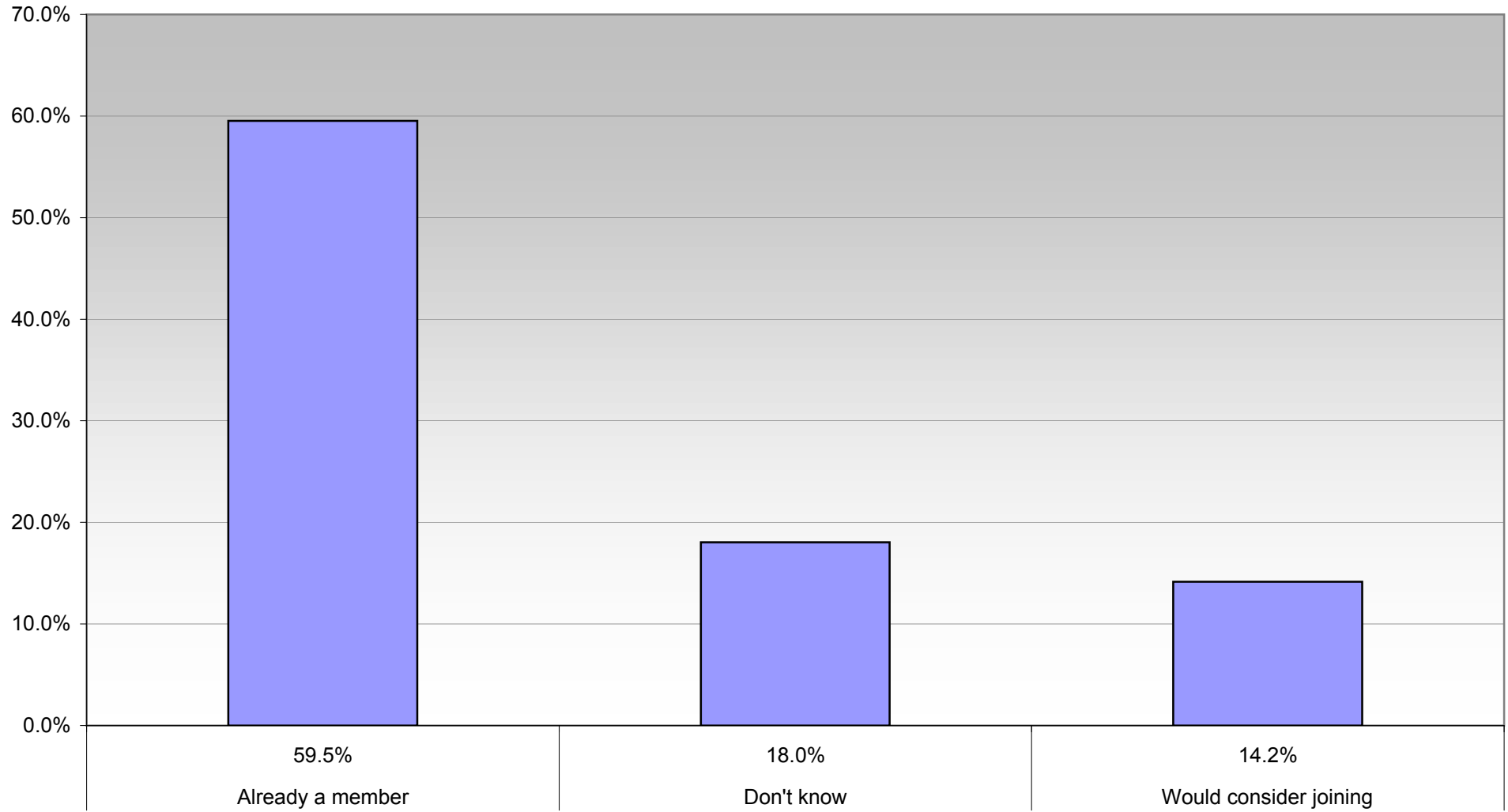
What reasons are most important to you when you decide to shop or use other businesses in the Parish?



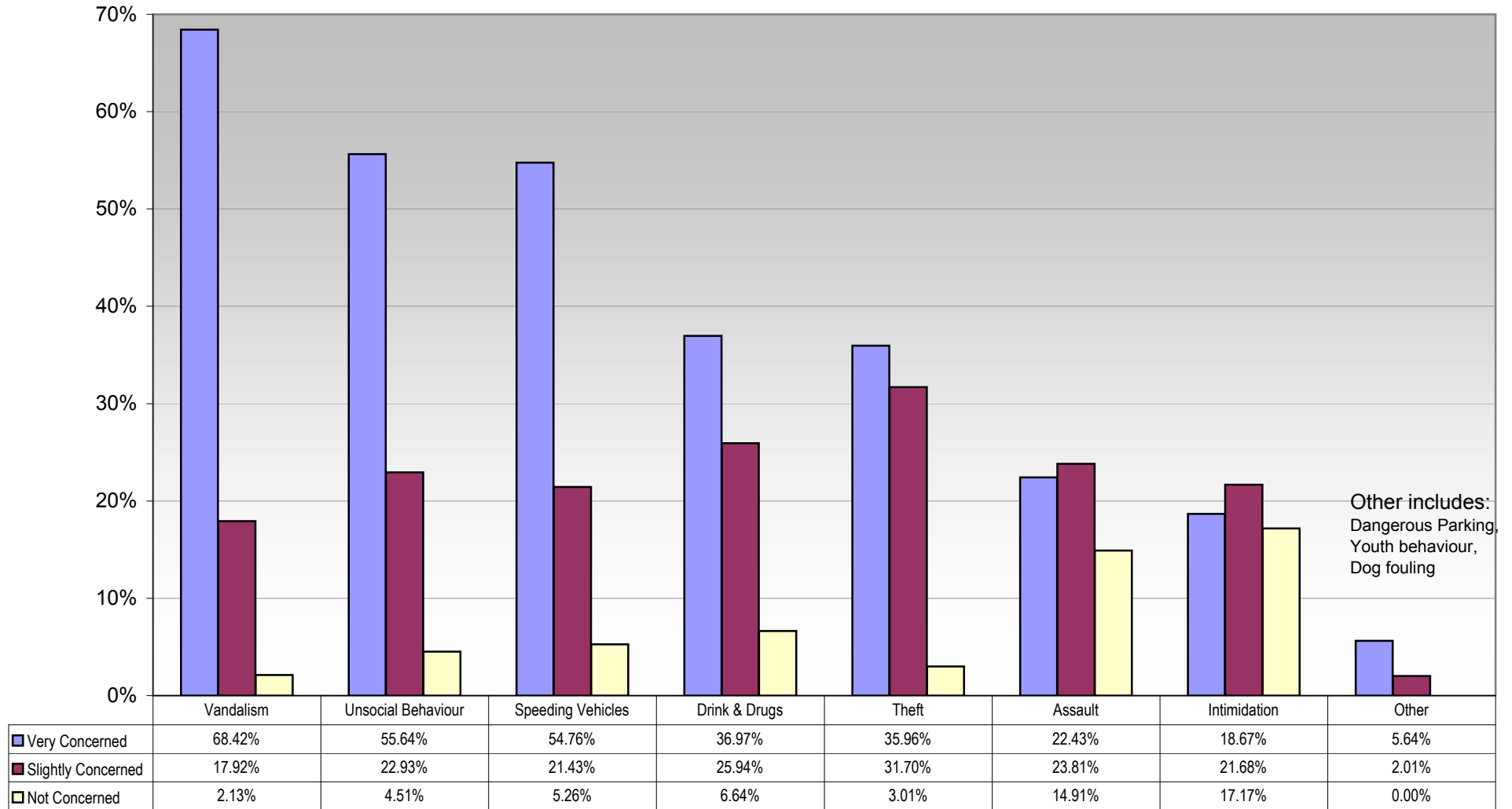
Identify the areas which you feel the authorities should give more focus on policing



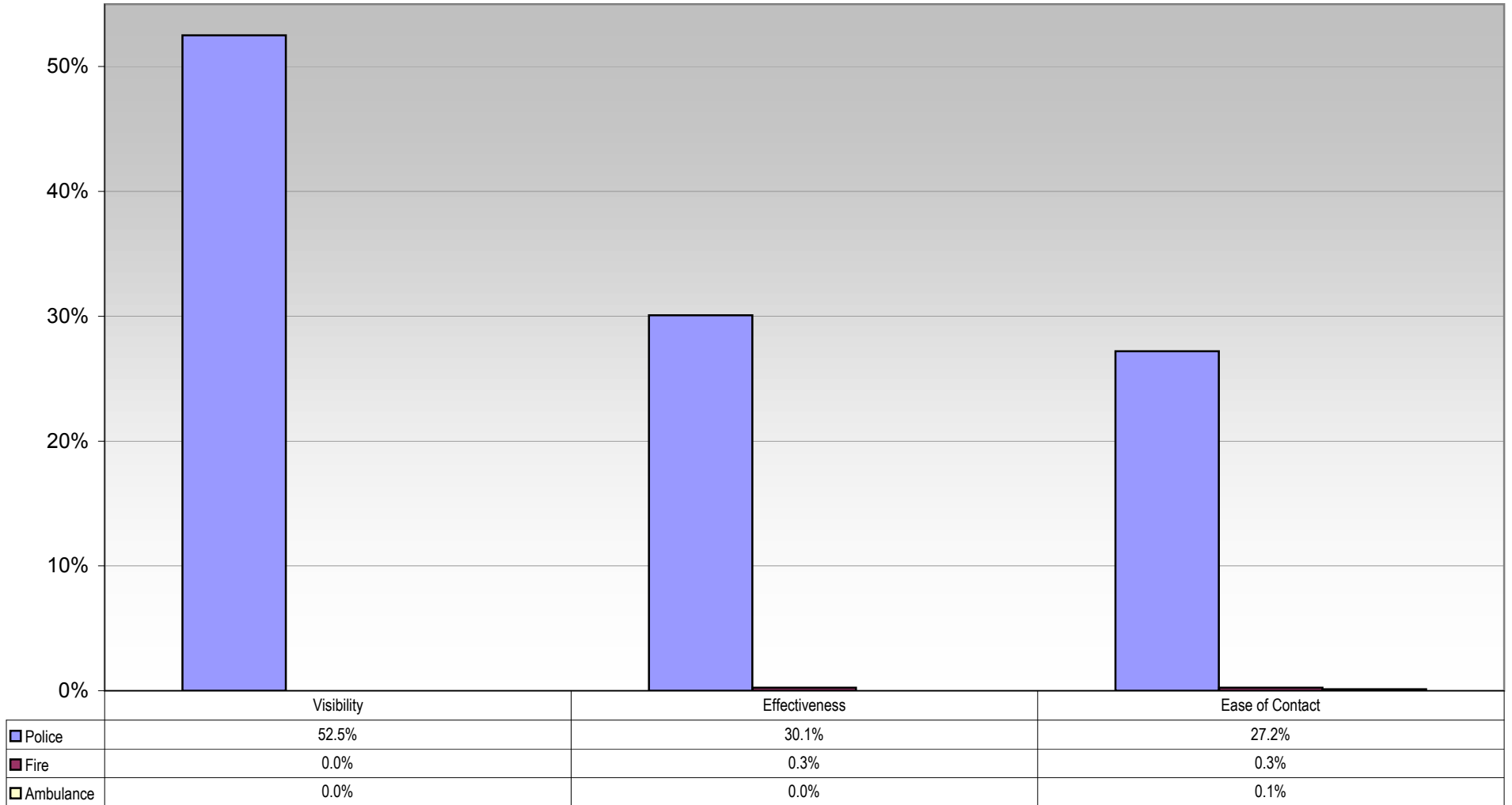
If there is a neighbourhood Watch Scheme in your street?



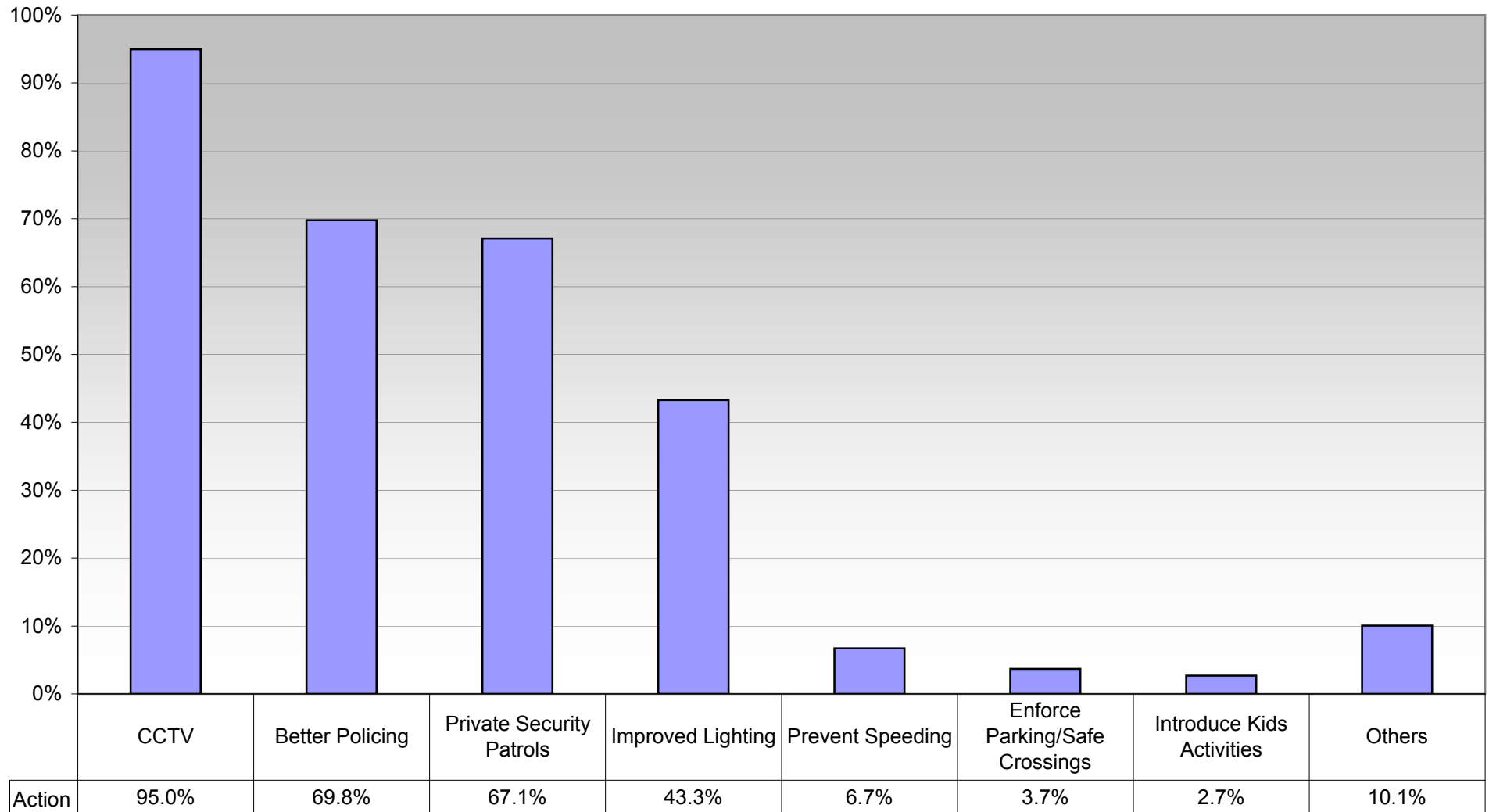
What aspects of crime and public safety in the Parish concern you?



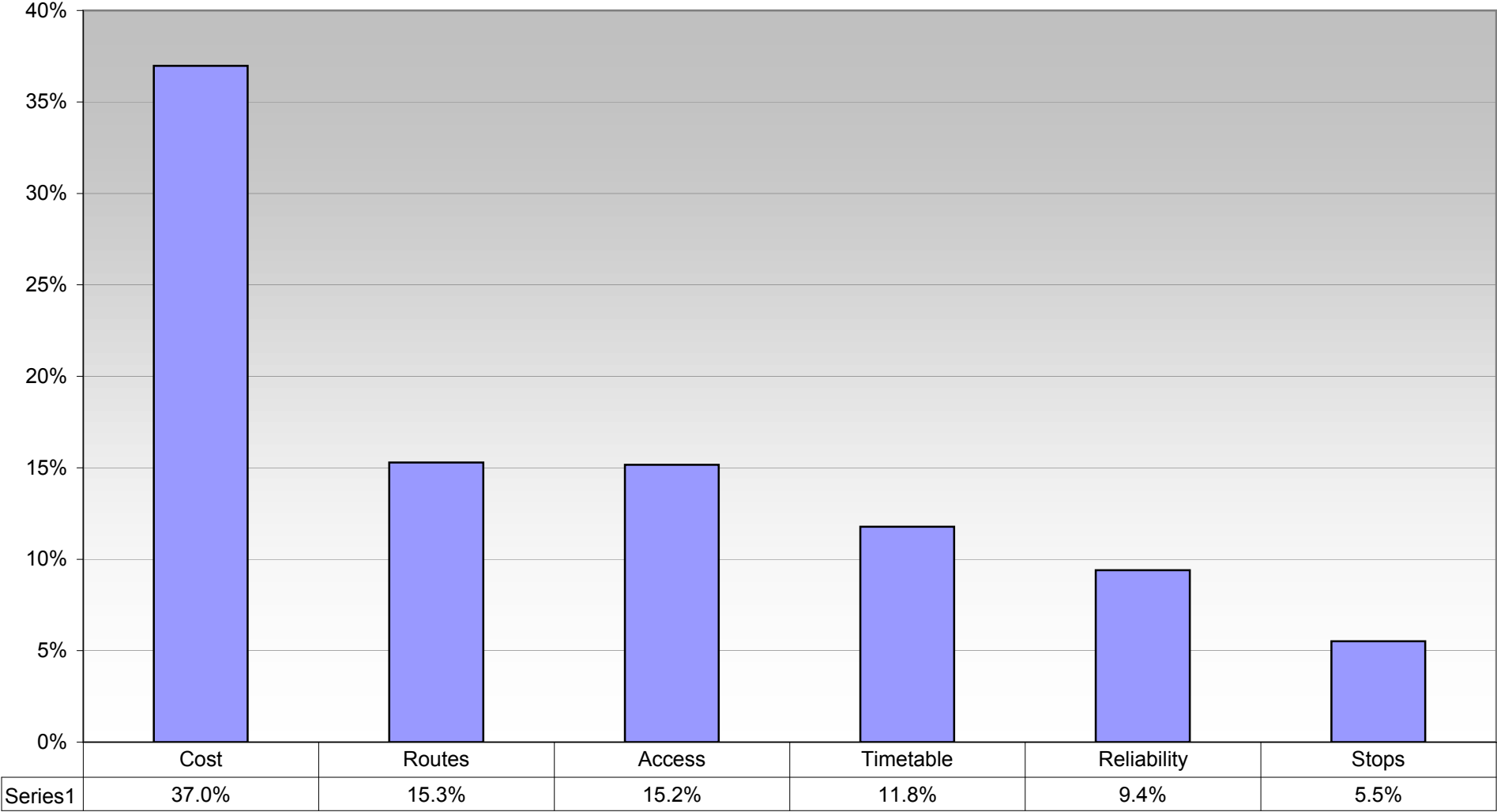
Are there any aspects of emergency services in the Parish that you are dissatisfied with?



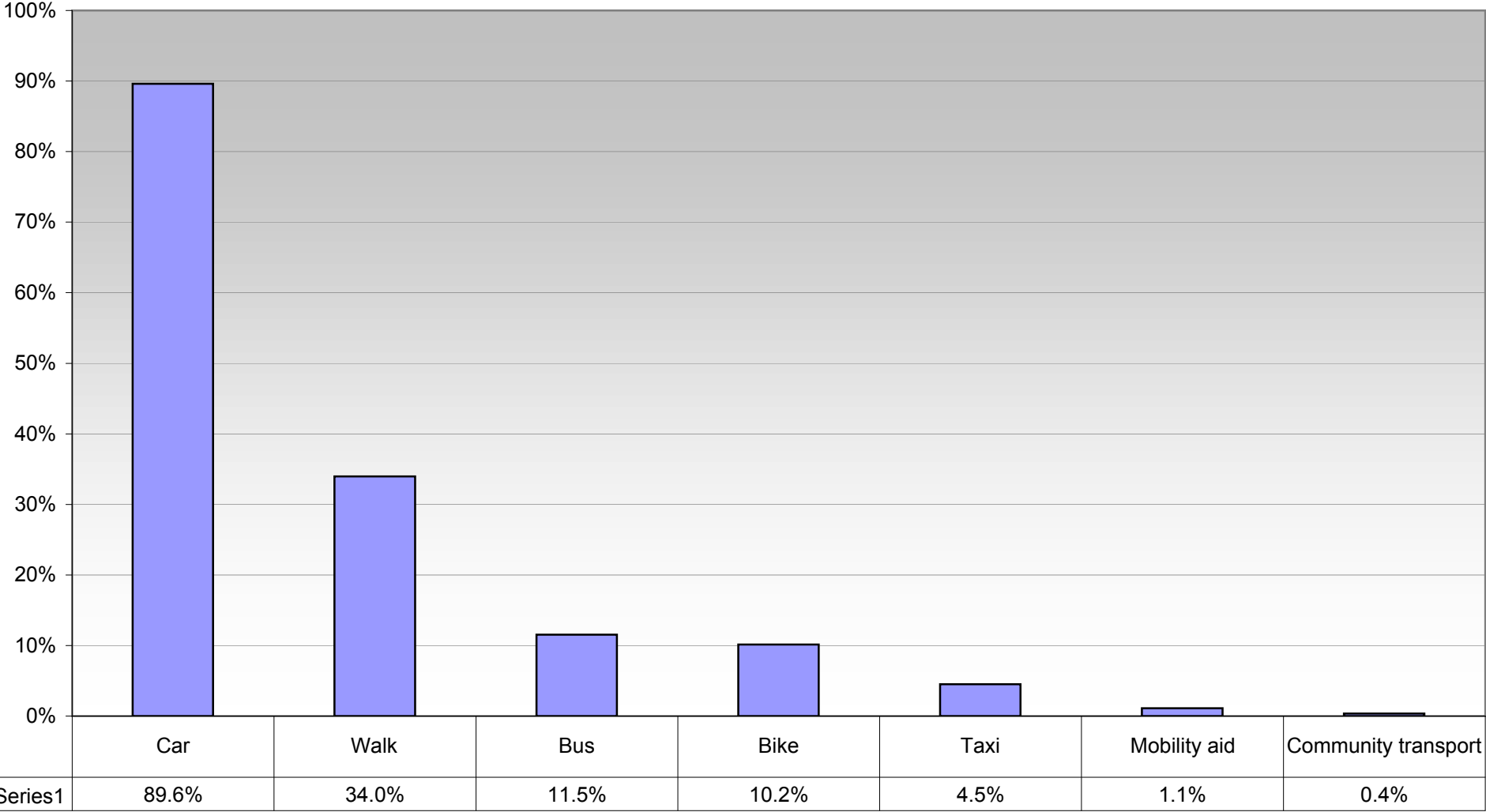
What actions do you suggest should be taken to improve the situation on crime and public safety in the Parish.



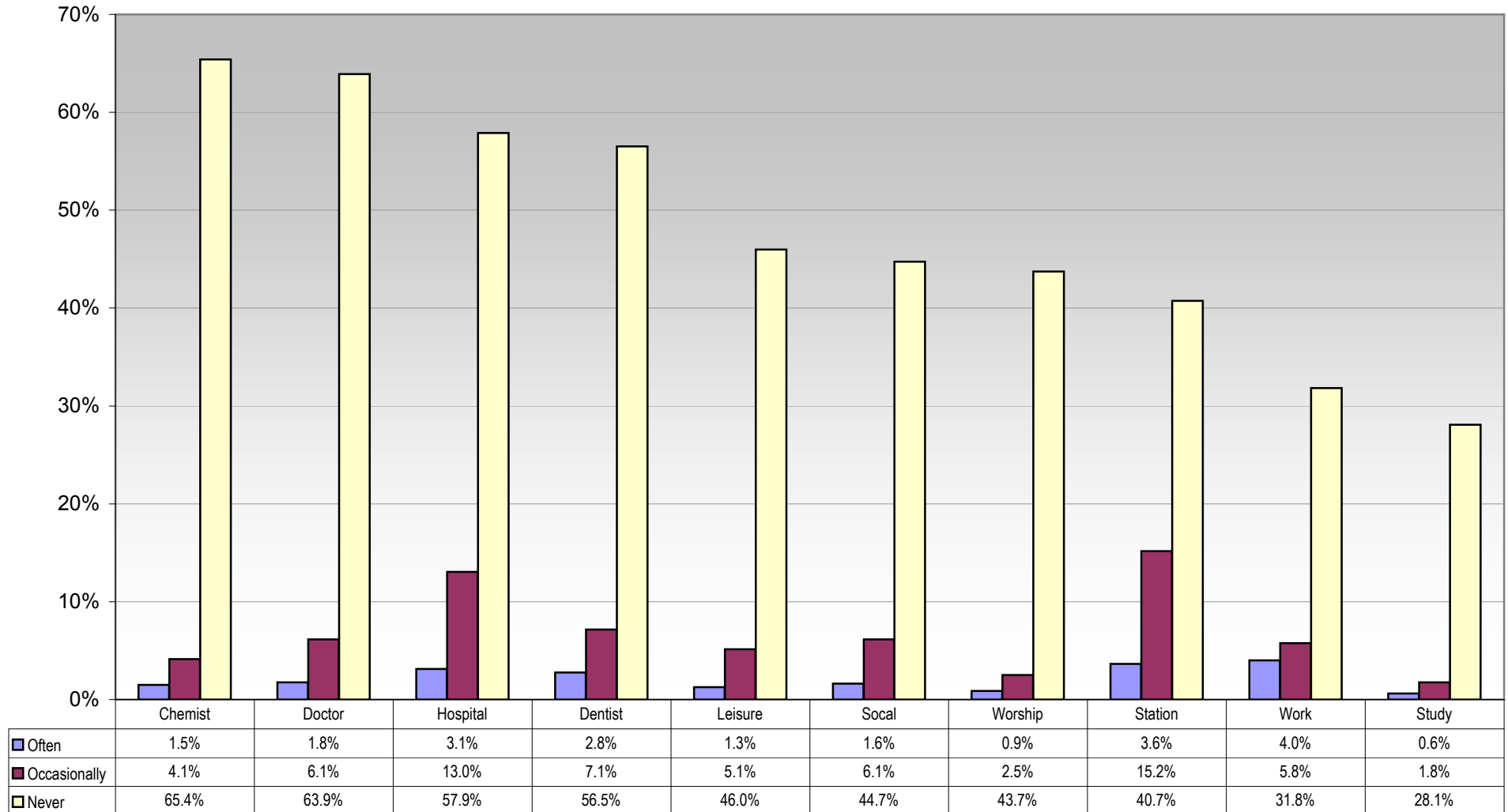
Would you like to see any improvements in the bus service with regard to?



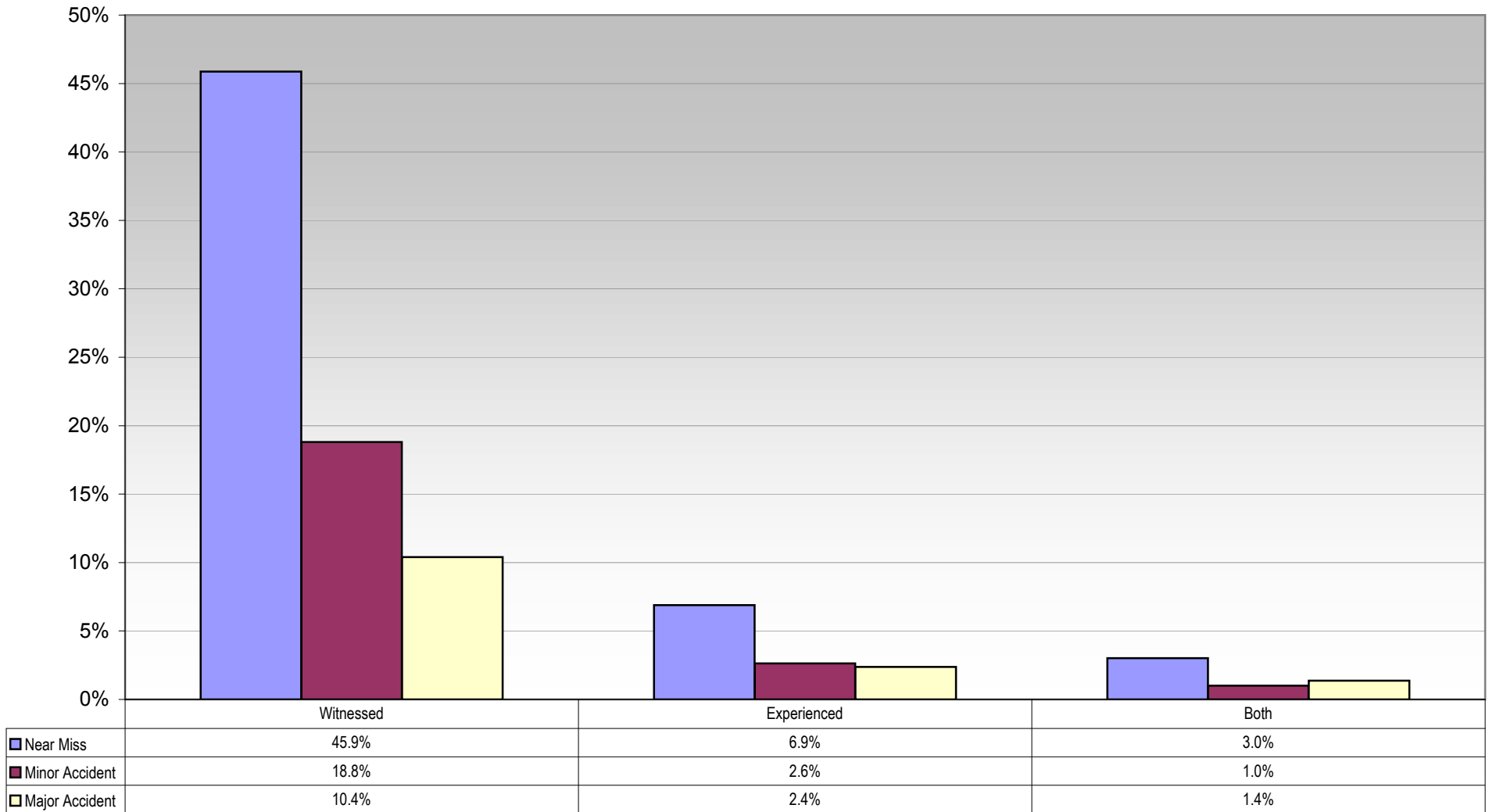
Which of the following is your major means of transport?



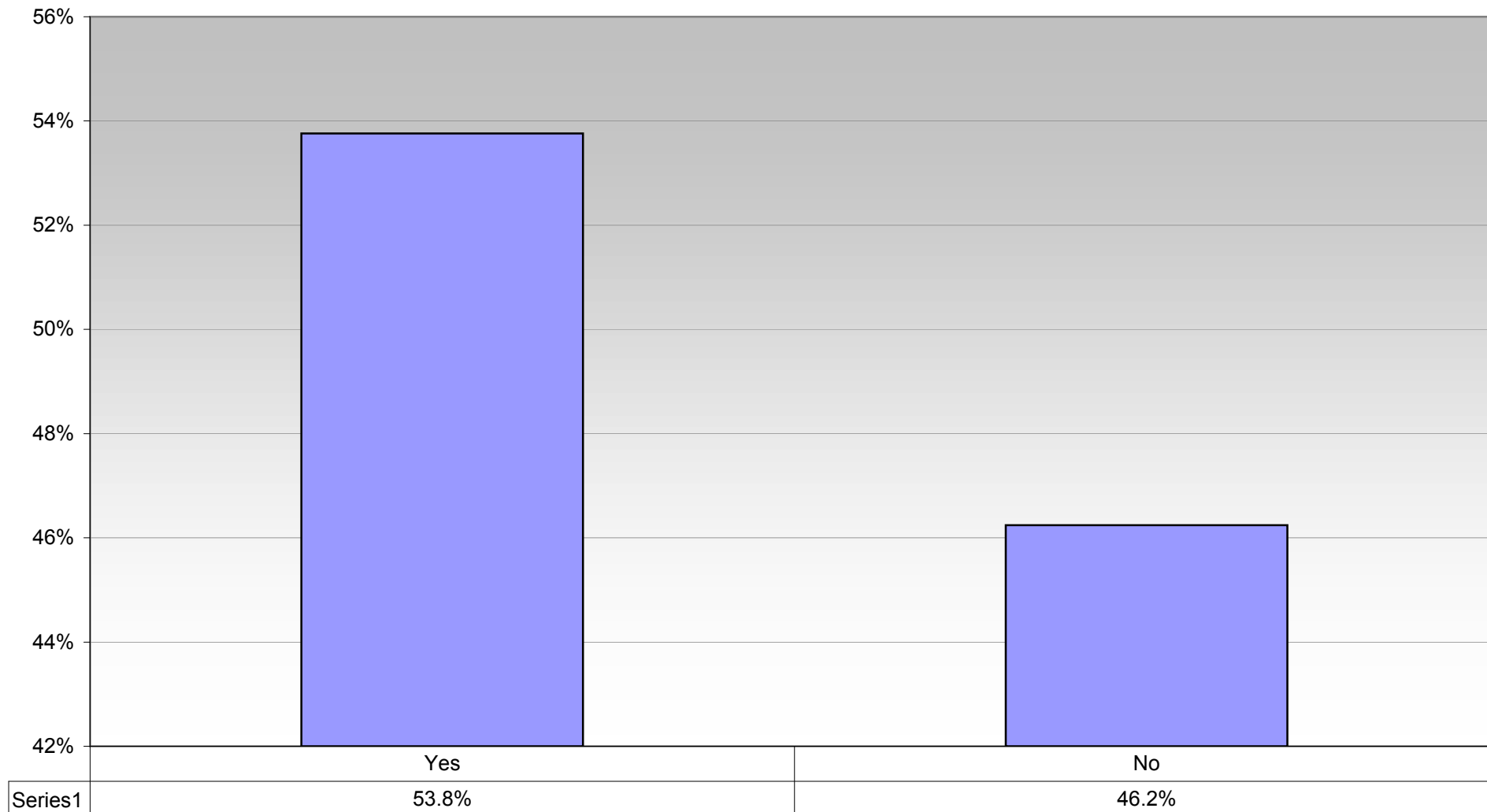
Do you have any difficulty in getting to the following?



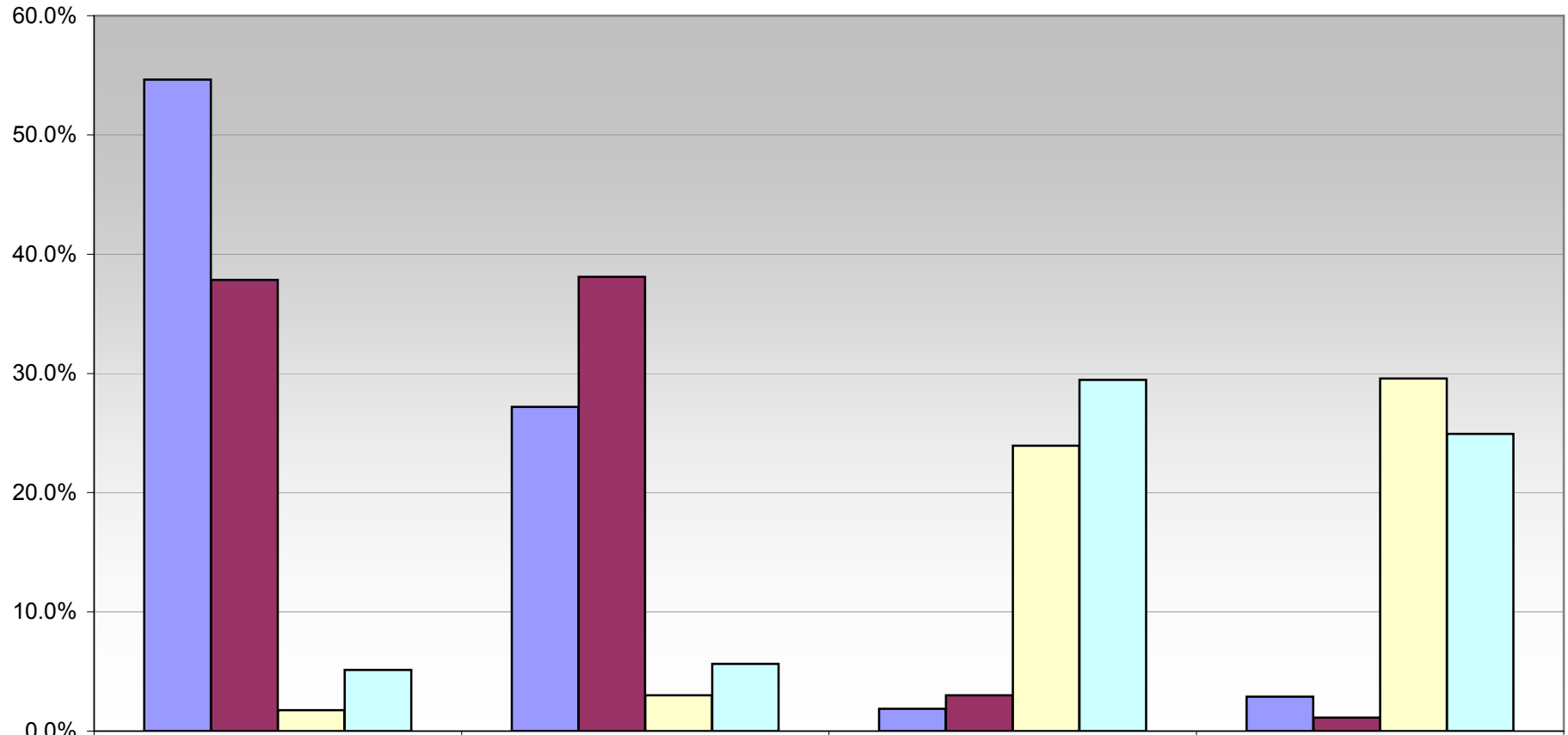
Have you experienced or witnessed an accident at the Comet Corner / A259 junction in the past 3 years?



Do you leave the village by a different route at busy times to avoid the Comet Corner junction?

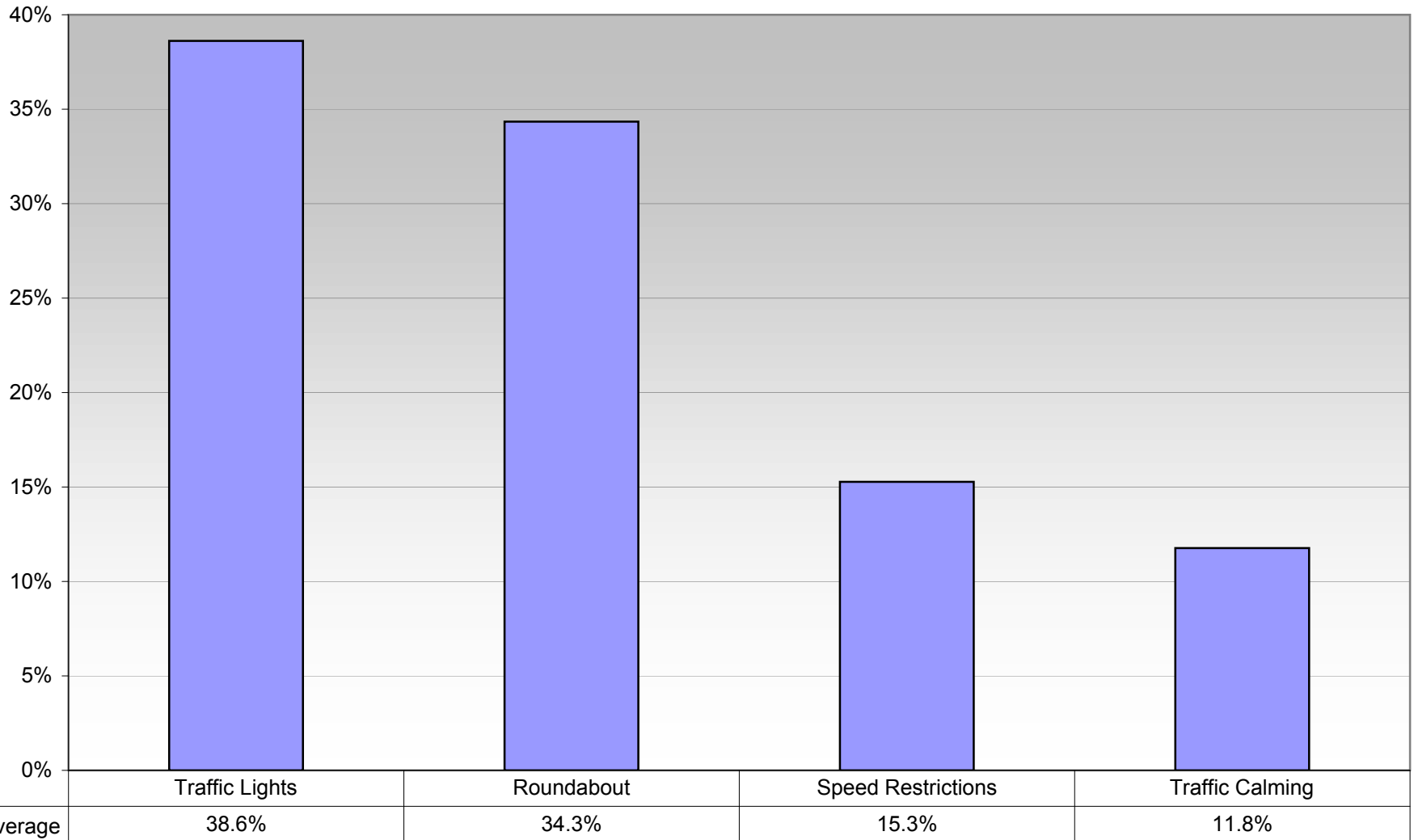


What would you choose as the best long term solution for the Comet Corner Junction?

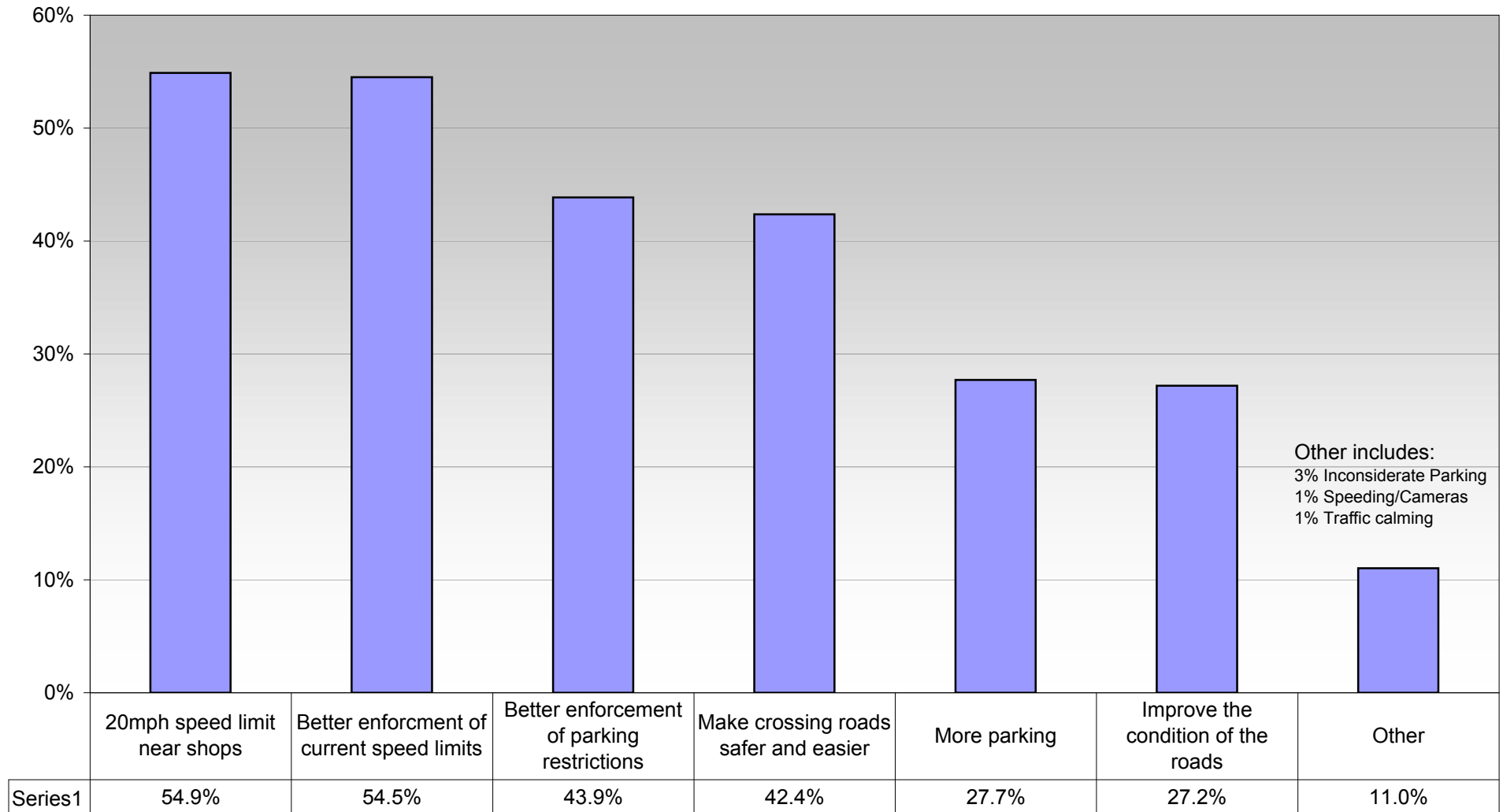


	Best	Second Best	Third Best	Fourth Best
Traffic Lights	54.6%	27.2%	1.9%	2.9%
Roundabout	37.8%	38.1%	3.0%	1.1%
Traffic Calming	1.8%	3.0%	23.9%	29.6%
Speed Restrictions	5.1%	5.6%	29.4%	24.9%

What would you choose as the best long term solution for the Comet Corner Junction? - Weighted Average

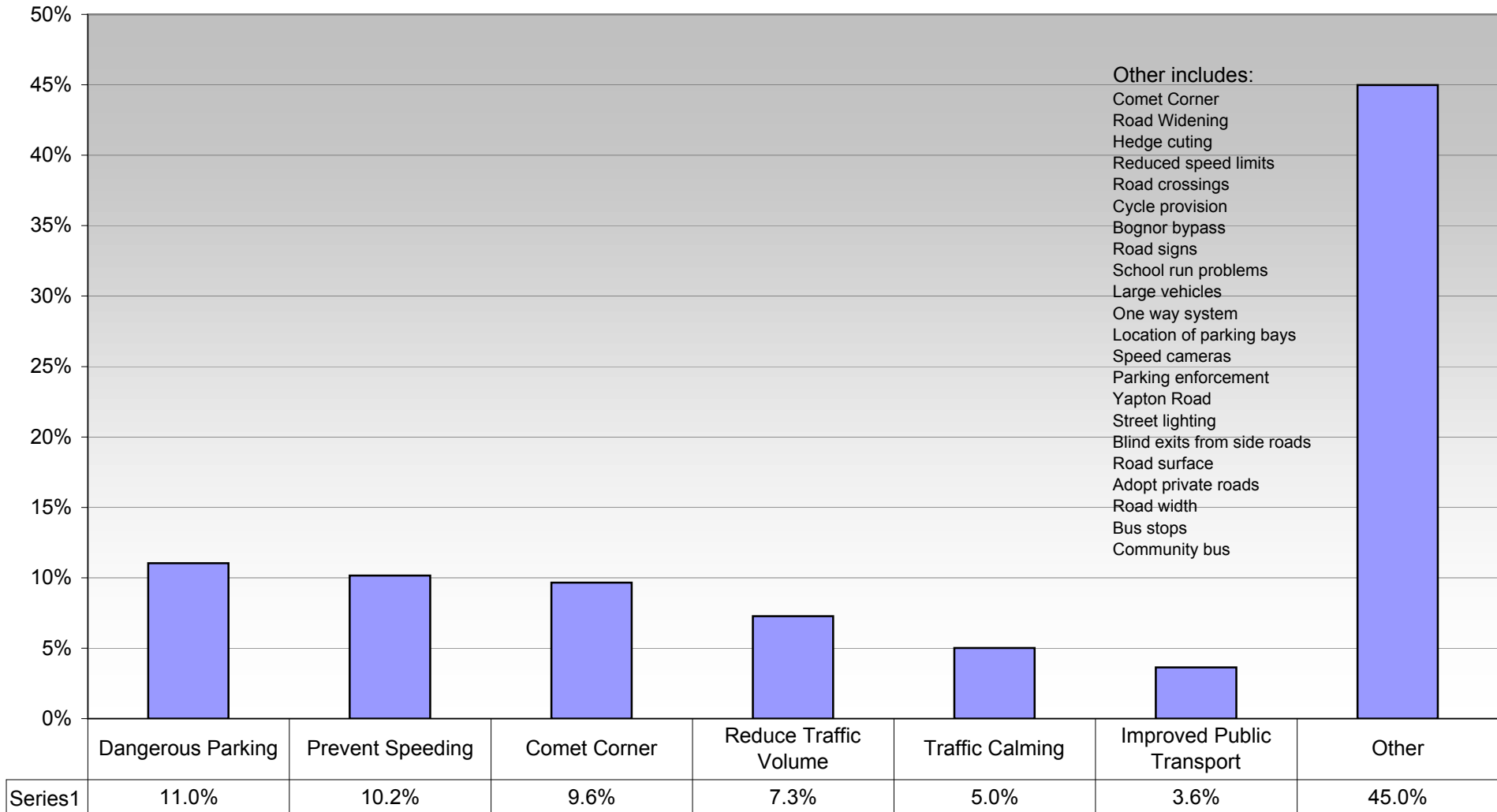


What changes regarding roads and transport would you most like to see in the Parish?



Summary of 'OTHER', "Transport"	Count	Main Questions	%
Parking on pavement	4	20mph speed limit near shops	54.9%
speed cameras	4	Better enforcement of current speed limits	54.5%
Cycle paths	3	Better enforcement of parking restrictions	43.9%
old people off the roads!	3	Make crossing roads safer and easier	42.4%
widen yapton road	2	More parking	27.7%
traffic calming	2	Improve the condition of the roads	27.2%
sleeping policemen by farmshop on A2132	2	Other	11.0%
A27 improvement	2		
reorganise parking at middleton shops	2		
prevent parking on yellow lines	2		
better drainage of surface water	2		
pedestrian crossings needed	2		
traffic wardens	2		
zebra crossing at elmer PO	1		
clear congestion at elmer P.O.	1		
cutting back hedges in yapton rd. improve visible	1		
end parking in main road opp. Shrubbs drive	1		
end parking opposite end shrubbs drive	1		
improvement of pavements flansham to MOS	1		
loading and unloading restrictions	1		
middleton garage staff should not park in road	1		
more double yellow lines but proper car park	1		
more wsc/police concern	1		
more yellow lines	1		
much better cheaper public transport	1		
off road parking only	1		
off street parking mandatory for all domestic	1		
old people having confidence to drive	1		
enforce parking controls near junctions	1		
park one side only	1		
pedestrian crossing	1		
pedestrian crossing between shrubbs and one st	1		
pedestrian crossing between shrubbs and one st	1		
pedestrian crossing onestop to shrubbs drive	1		
clear congestion around elmer P.O.	1		
better, cheaper public transport	1		
reduce parking near shops	1		
remove large lorries from Yapton Road	1		
remove lorries from Yapton Road	1		
remove parking bays on north Midd.Road. Opp P	1		
remove parking by bow window	1		
ban on collection of children from school	1		
road bumps in some areas	1		
road widening near sea lane	1		
separate busstop and parking by one stop	1		
shopkeeper/garage park in car park	1		
shopkeeper/garage to park in car park	1		
sleeping policemen	1		
ban collection from school by car	1		
some hedges reduced in height	1		
speed camera and wardens	1		
speed camera near merry end	1		
speed camera on a259 at comet corner	1		
enforce disabled badge use	1		
speed cameras - yapton and elmer road	1		
speed humps at start and end of shops	1		
speed restriction and camera at comet corner	1		
stop mothers driving children to school	1		
enforce disabled badges	1		
a crossing at onestop or shrubbs drive	1		
traffic calming measures	1		
turning point near shops	1		
widen road Midd.rd to comet corner	1		
20mph restrictions on estate roads	1		
widen filter lane on south side of A259	1		
car transport to deliver off peak times	1		
car transporters deliver off peak times	1		
encourage people to walk	1		
and business developments	1		

If you could make a change to improve roads and transport in the Parish what would it be?

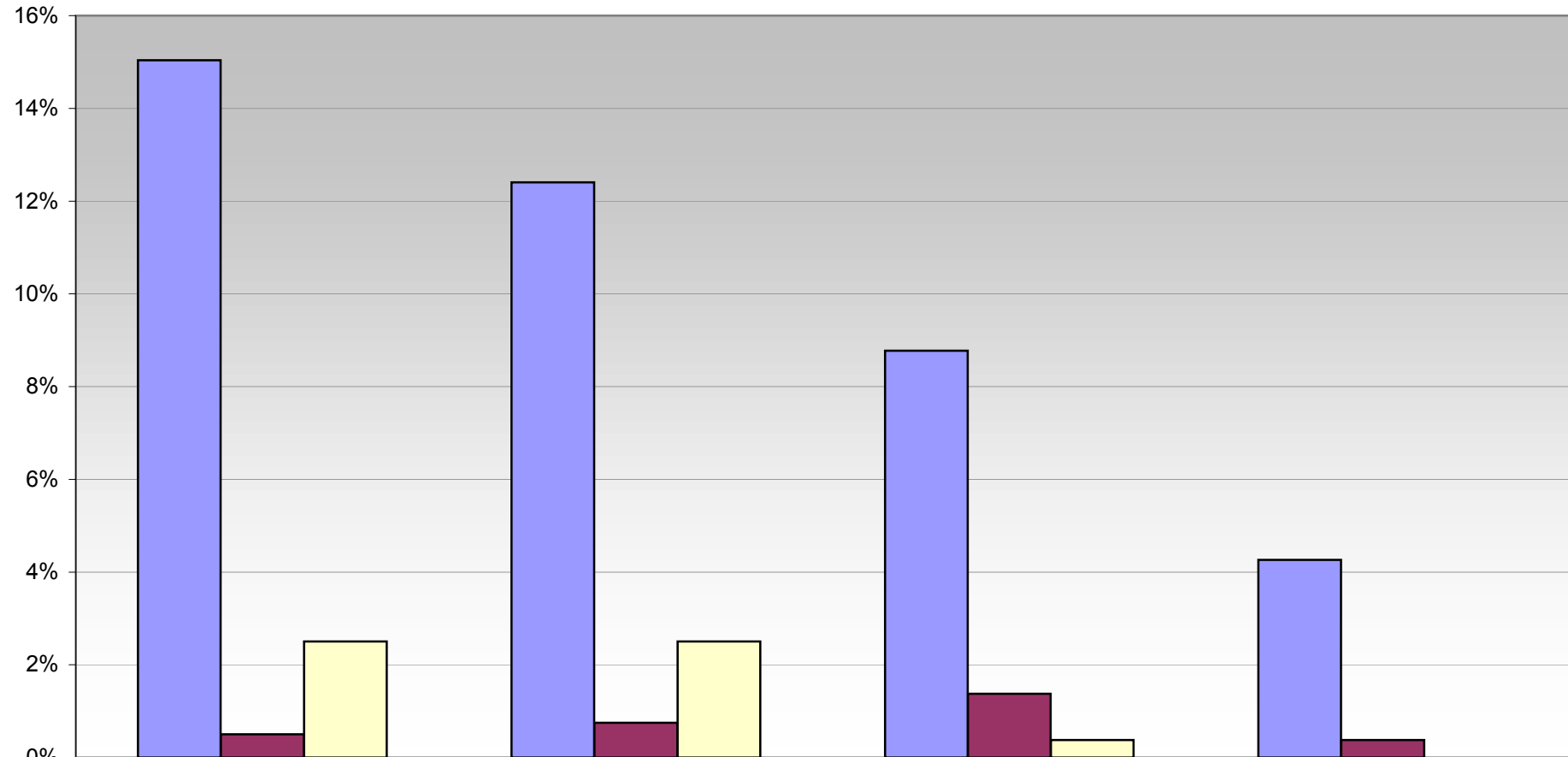


Summary of 'OTHER', "Road Improvements"	Count	Summary of 'OTHER', "Road Improvements"	Count	Summary of 'OTHER', "Road Improvements"	Count
traffic lights at comet corner	22	sort comet corner	2	no parking opp.garage	1
Roundabout at comet corner	19	speed cameras in yapton road	2	no right turn at comet corner to L'ton	1
remove parking bays at bow window	12	speed cameras or sleeping policeman	2	ok as they are	1
bognor bypass to ease traffic	11	speed cameras or speed bumps	2	one way system at comet corner	1
cut speed	9	speed humps	2	one way systems where possible	1
encourage people to cycle or walk more	7	stop double parking in middleton village	2	only one safe crossing in village	1
make comet corner safe	7	stop illegal parking	2	or traffic calming flansham to elmer sands	1
comet corner traffic lights	6	stop on road parking by mandarin chef	2	pedestioan crossings in yapton road	1
enforce parking restrictions	6	stop parking both sides of road by shops	2	parking in front of bow window causes congestion	1
speed cameras	6	stop parking on road	2	parking in Midd.Road opp.Fiat garage	1
street lighting in yapton road	6	take out mini roundabouts	2	parking outside shops at sea lane	1
enforce speed limit	5	traffic calming in yapton rd.	2	parking restricted time	1
new road elmer to a259 at clymping	5	traffic calming on A259	2	pavement merry end to shops	1
no further housing development	5	traffic lights	2	pavement shops to Merry End south side	1
parking one side only through 'village centre	5	widen north end yapton road to improve visibility	2	pay and display car park to pay for warden	1
Sort out Comet Corner	5	widen road at elmer P.O.	2	pay and display park to pay for warden	1
bus link to barnham	4	Yapton Rd. too small for juggernauts & car transpo	2	Pedest.Crossing at Shrubbs Drive	1
bus to barnham station	4	zebra crossing by onestop	2	pedestrian crossing at shrubbs drive for elderly	1
comet corner junction	4	20mph for whole of parish	1	pedestrian crossing by church	1
enforce no parking on yellow lines	4	20mph speed limit in town	1	pedestrian crossing in elmer	1
parking	4	20mph speed limit near shops	1	pedestrian crossing in village and by shrubbs driv	1
reduce speed limits	4	20mph through village and by school	1	pedestrian crossing in yapton rd	1
Speed cameras between MOS & Elmer	4	a proper roundabout at Yapton rd.elmer rd.	1	pedestrianise- foot traffic and delivery only	1
stop parking outside bow window - congestion	4	additional access road	1	penalise motorists who cut corners turning right	1
traffic wardens	4	all commercial deliveries between 2100 and 0600	1	police camera or speed bumps in yapton road	1
zebra crossing	4	all residential streets 20mph	1	prevent parking on road near alldays	1
better crossing at avisford medical centre	3	alter/widen improve sea lane/ Midd.rd junction	1	prevent riding on pavements and pathways	1
better enforcement of speed limits	3	better enforcement of current speed limits	1	priority for traffic lights at comet corner	1
bollards outside elmer store stop pavement parking	3	better road repair without patching	1	proper resurfacing of middleton road	1
comet corner roundabout	3	better visibility at yaptonrd./midd.road. Junction	1	proper roundabout at yapton/elmer road	1
cycle lanes	3	bike lanes everywhere to reduce car use	1	public transport to more destinations	1
enforce double yellow lines	3	bring back police to merry end to catch speeders	1	rat run through flansham park	1
enforce speed restrictions in yapton road	3	build a car park, permanent clamping co.	1	rat runs through flansham park	1
improve comet corner junction	3	bus connection to barnham or bognor station	1	redesign east drive elmer rd.junction	1
less vehicles	3	bus routes via yapton and barnham	1	reduce car parking at local school	1
Lights at comet corner	3	bus to chi other than 700	1	reduce parking near shops	1
more traffic calming	3	bus to chichester direct and litthampton	1	reduce speed limits and enforce them	1
no parking on bus stops	3	bus to ford station	1	reduce speed limits, safer for cyclists	1
no parking on yellow lines	3	bus to littlehampton	1	reduce speed or sleepng policeman	1
proper policing	3	bus to station- barnham or l'ton	1	reduce speeding	1
safe crossing betw.yapton rd and midd.rd.	3	bus/rail transport cheaper	1	reduce speeds	1
slow traffic down	3	buses with access for disabled	1	Regular mainainance of verges	1
traffic calming	3	busses to l'ton, arundel, barnham	1	regular road maintainance/resurfacing	1
traffic calming in village	3	bypass from community college to bersted	1	reliability of buses needs improvement	1
20mph in yapton rd.	2	cars and bikes racing through villages	1	remove all road parking near shops	1
20mph through village	2	chicanes in area of shops	1	remove all street furniture that is not vital	1
a new road from elmer to A259	2	chicanes in areas of shops	1	remove bollards by shops in bankside	1
action on comet corner	2	clcycle path	1	remove islands in village centre	1
anti speed ramps	2	clear up litter and verges	1	remove parking on road near post office	1
better lighting on all roads	2	Control speed	1	remove parking outside shops by St.Nicholas Ct.	1

Summary of 'OTHER', "Road Improvements"	Count	Summary of 'OTHER', "Road Improvements"	Count	Summary of 'OTHER', "Road Improvements"	Count
better parking off road	2	council should clean drains to prevent flooding	1	repair potholes and gullies	1
better road surfaces	2	crack down on street vehicle parking	1	repair roads in general	1
build bypass to improve A259	2	crossings by shops and surgery for old people.	1	restore larger slip roads at comet corner	1
bypass felpham/Middleton	2	cut back foliage more effectively	1	restrict parking near school and enforce	1
bypass from comet corner to elmbridge	2	cut overgrown trees in yapton road	1	restrict parking on Middleton Road near school	1
change comet corner NOW	2	cycle lanes on road or verge	1	restrict parking to one side of the road	1
cheap fares to reduce car use	2	cycle path along beach from sea lane to bognor	1	road calming by shops	1
chicanes to slow traffic	2	cycle path along main road so safe for children	1	roads cannot cope with more traffic	1
crossing	2	cycle path from Larksfield to A259	1	roundabouts construction flawed	1
crossing by one stop	2	deal with comet corner NOW!	1	run buses to chichester from elmer on weekdays	1
cut back hedgerows more often	2	design of comet corner	1	safer cycle paths to BR, L'ton, barnham	1
cut back hedges in Yapton road	2	dial a ride taxi service	1	seating at junction ancton and yapton road	1
cycle paths or wider pavements	2	direct bus service to chichester/worthing	1	set up private run transport for doctor visits etc	1
decrease traffic using merlin way	2	discourage car schoolruns, encourage walking	1	should be more safe crossing places	1
direct route to chichester and worthing	2	discourage parking on road	1	signs at roundabouts about pedestrians	1
education of road users	2	do away with park spaces by café	1	slow down traffic esp.peak times	1
employ a warden	2	don't permit trade lorries unloading during day	1	slow down traffic through shop areas	1
enforce 20mph max	2	dual carriageway on A259	1	slow traffic near shops to make crossing safer	1
enforce restriction on parking near junctions	2	elongated roundabout at comet corner	1	sort comet corner - a nightmare	1
enforce speed and parking regs	2	enforce current speed limits	1	sort comet corner urgently.- a nightmare	1
enforcing traffic regulations	2	enforce no parking at sea end of sea lane	1	Sort out Comet Corner	1
erase parking northside Midd.Rd. opp chemist	2	enforce policing of Q20 above	1	speed limits	1
Felpham bypass	2	enforce restricted parking	1	speed monitoring	1
fewer parking restrictions out of season	2	enforce speed limits/parking outside P.O.	1	speed bumps on road near shops	1
footpath merry end to shops	2	enforce speed reduction	1	speed calming measures in village	1
heavily penalise speeding drivers	2	enforce speed restrictions	1	speed humps through elmer	1
improve congested roadside parking	2	Enforcement of no parking areas	1	Speed humps to slow down traffic	1
improve parking	2	erase parking areas near junctions	1	Speed humps to slow traffic	1
improve signs to shrubbs car park	2	extended parking outside school restricted	1	speed limit/stop parking outside post office	1
install speed cameras, road humps	2	fill in dips where water collects	1	speed limits	1
keep cyclists off pathways	2	fill in the potholes	1	speed ramps	1
large speed and concealed entrance signs Yapton Rd	2	flat fare on bus	1	speed ramps through the village	1
main street small ramps or reduce speed limits	2	flat fare on buses	1	speed restriction at elmer(enforced)	1
make Ancton Lane one way	2	footpath from merry end to shops	1	speed restriction on main road in village	1
make private roads public	2	free bus pass for over 65's	1	speed restriction, traffic calming by shops	1
make sea lane wider	2	half islands like Parklands in Chichester	1	speed restrictions at comet corner	1
mini community bu with easy access for elderly	2	have parking in Midd. Road further away from	1	speed restrictions enforced	1
more careful parking	2	hedges cut in yapton road	1	speed restrictions observed	1
more parking near chemist	2	holds up buses especially	1	speed restrictions, traffic calming by shops	1
more pedestrian crossings	2	hope for better driving standards	1	stop building more properties	1
more tree planting	2	hopper mini buses and free bus passes for oaps	1	stop digging up roads	1
more visible speed limit signs	2	humps in village road	1	stop digging up roads and holding everyone up	1
no parking outside school	2	improve bus/rail transport	1	stop disabled parking on double yellow lines	1
old people in motorised wheelchairs of the road	2	improve driving skills	1	stop disabled parking to double yellow lines	1
one way system using Yapton road and flansham	2	install cameras if no police presence	1	stop large vehicles parking on minor roads	1
parking in the village one side short term(30min)	2	install keep left obelisk in Midd rd, at shrubbs	1	stop motorists speeding through miniroundabouts	1
parking restrictions enforced all year	2	install police cameras	1	stop parking on double yellow lines	1
pedestrian crossing at one stop	2	late night return trains from london	1	stop parking on left entering mos FROM EAST	1
pelican or zebra crossing by shops	2	later bus times from town	1	stop parking outside telephone building	1
police are never seen	2	lower cost public transport	1	stop parking outside telephone building	1

Summary of 'OTHER', "Road Improvements"	Count	Summary of 'OTHER', "Road Improvements"	Count	Summary of 'OTHER', "Road Improvements"	Count
police presence	2	lower speed	1	stop pavement parking at elmer P.O.	1
police presence in elmer rd.	2	make a cycle lane priority	1	stop pavement parking at elmer Road P.O.	1
prevent stopping/parking outside Mace	2	make drivers indicate before manoeuvre	1	stop people riding on pavement and pathways	1
priority to safety measures at comet corner	2	mark bus stop areas	1	stop people riding on pavements and pathways	1
prohibit parking in roadway near shops	2	more crossings fro pedestrians	1	stop speeding	1
remove 30mph sign in sea lane	2	more cycle paths	1	stop speeding between flansham and mos	1
remove bollards at top of sea lane	2	more effective policing	1	stop speeding through miniroundabouts	1
remove small island at flansham pk. Entrance	2	more exercise and fresh air for children	1	they are adequate	1
remove some speed bumps	2	more frequent bus service to barnham station	1	traffic calming elmer sands up through elmer	1
restrict hgv's in yapton to access only	2	more off road parking	1	traffic calming from MOS to Elmer	1
restrict lorries	2	more parking restrictions	1	traffic calming in rat runs eg ilex way	1
restrict no. of cars per home	2	more police on duty	1	traffic calming on rat runs eg ilex way	1
restrict speed	2	more policing of speed limits	1	traffic lights at comet corner	1
restrict speed to 20 mph	2	more public transport and free bus pass	1	traffic wardens covering the village	1
restrict vehicle size in Yapton Road	2	more public transport to reduce volume of cars.	1	transport to littlehampton	1
restrict width along elmer road	2	more safe crossings	1	trim hedges in yapton road	1
resurface elmer road	2	more school buses for after school clubs	1	vary narrow yapton road - trim hedges	1
road signs obstructed by trees	2	mph signs lit up	1	weight restriction in Yapton Road	1
roundabout or lights at comet corner	2	narrow entrance to village	1	widen A259	1
school bus from elmer via flansham to school	2	new cycle path	1	widen A259 from oving roundabout to Littlehampton	1
sea lane into main road is dangerous	2	new road surface along middleton road	1	widen road near middleton shops	1
see 20 above	2	no parking by bow window, causes congestion	1	wider roads	1
service to Littlehampton	2	no parking east of sea lane	1	wider roads for less congestion	1
slow traffic on st.nicholas bend	2	no parking on double yellow lines	1	Wider roads(Yapton Lane)	1
some sleeping policemen	2	no parking on road in shopping area	1	width restrictions on lorries in village	1

If you use the Parish playing fields?



	For walking dogs	For the playground	Other	For sport
■ Shrubbs Field	15.0%	12.4%	8.8%	4.3%
■ Larksfield	0.5%	0.8%	1.4%	0.4%
■ Both	2.5%	2.5%	0.4%	0.0%

Summary of "Why Chose Middleton"	Count	Summary of "Why Chose Middleton"	Count	Summary of "Why Chose Middleton"	Count
peace and quiet	40	village aspect	2	no scope for more houses	1
near sea	24	village environment near good transport links	2	no space for modern infill building	1
village atmosphere	16	village feel	2	No through road in Elmer to Climping	1
quiet	15	village friendliness	2	no traffic noise, friends	1
sea	15	Village image	2	none exist now	1
beach	11	village life by the sea	2	no through road elmer to climping	1
quiet location	11	village setting	2	open space	1
location	9	village shops, safety, no pollution	2	original peace & quiet - all gone?	1
quietness	9	village with community spirit	2	originally a nice parish- now too big	1
family	8	well kept environment	2	other family members in area	1
proximity to sea	8	a peaceful backwater 30yrs ago	1	out of town	1
house prices	7	40 yrs ago the perfect village	1	out of town	1
low crime rate	7	40yrs ago it was a perfect village	1	out of town location	1
peace & quiet	7	48 yrs ago a village - now a town	1	peace & quiet	1
close to family	6	a community, less pollution, safe for kids	1	peace ,quiet, beauty	1
Community Spirit	6	a home by the sea without tourists	1	peace and calm	1
peace and tranquility	6	a known good location	1	peace and serenity	1
peaceful	6	a peaceful location in 1971	1	peace, quiet, cleanliness	1
quality of life	6	a small quiet safe unspoilt village - not now	1	peaceful and friendly	1
close to sea	5	a suitable holiday home	1	peaceful environment	1
Friendly people	5	a village not a suburb of bognor	1	peaceful place to live	1
school	5	a village rather than suburb of bognor	1	peaceful, near south downs,	1
village life	5	access to beach, medical centre	1	peacefulness and courtesy of residents	1
beach and community feel	4	access to chichester, beach, countryside	1	peacefulness and friendliness of neighbours	1
crime free	4	access to countryside, beach and chichester	1	people area, beach, shops	1
friendly village atmosphere	4	access to doctor	1	pleasant and peaceful	1
less traffic, pollution and people	4	access to essential local shops	1	pleasant area	1
middleton sports club	4	access to essential shops	1	pleasant area with sea views	1
nice area	4	access to family members	1	pleasant atmosphere, proximity of shops	1
peaceful area	4	accommodation	1	pleasant environment	1
peacefulness	4	air quality	1	pleasant peaceful area	1
quiet, sea, no street lights	4	alas no longer applies	1	pleasant rural village with no through traffic	1
sense of community	4	all essentials nearby	1	pleasant rural village, no through traffic	1
tranquility	4	always lived here	1	pleasant village centre, pub	1
affordable housing	3	ambiance	1	pleasant village surroundings	1
attractive village	3	apparent peace of private estate	1	pleasant and peaceful	1
born here	3	area	1	pleasant location	1
clean air	3	area with limited further development	1	position in county	1
close to shops	3	attractive layout	1	position of house	1
community, less pollution, safer for kids	3	attractive village, shops and houses	1	position of village	1
housing	3	availability of desired property	1	privacy of saxon reach estate	1
local shops	3	banks food shops	1	property costs, social life	1
lovely village	3	beach and local environment	1	provision of shops	1
near to family	3	beach, people, safe community	1	proximity to B.R. & L'ton for bigger shops	1
no through traffic	3	beautiful landscape, clean	1	proximity to beach and sea	1
peace	3	beautiful village	1	proximity to countryside and sea	1
pleasant surroundings	3	beautiful village close to sea	1	proximity to sea and beach	1
proximity of sea	3	bishop tuffnell school	1	proximity to sea and countryside	1
Quiet area	3	bowls club	1	proximity to sea front	1
quiet community by the sea	3	bus service, local general store	1	proximity to the sea	1
quiet life	3	By sea, peace & quiet	1	quality of environment	1
quiet village life	3	calm and quiet	1	quiet access to amenities	1
quiet, near to sea	3	central village focus in shops	1	quiet and civilised (in 1962!)	1
retirement	3	charm of village	1	quiet and clean surroundings	1
slower pace of life	3	clean air, schools	1	quiet and secure	1
under development of surroundings	3	clean beach	1	quiet atmosphere - not any more!!	1
village community	3	clean open area close to sea	1	quiet backwater, no through road	1
village environment	3	clean open area close to the sea	1	quiet beach, access to local areas	1
walking distance of the sea	3	cleaner and quieter than a city	1	quiet idyllic surroundings	1
14 years ago nice and quiet	2	cleanliness	1	quiet location, close to the sea	1
access to beach	2	cleanliness and amenities	1	quiet location, near sea and countryside	1
access to sea	2	climate , sunshine	1	quiet neighbourhood	1
access to sea and coastal walks	2	close community	1	quiet peaceful seaside village	1
access to sea and downs	2	close to beach	1	quiet peaceful village	1
access to woods and seaside walks	2	close to beach and countryside	1	quiet pleasant environment	1
adequate shops, health centre and pretty surrounds	2	close to bognor	1	quiet position in cul de sac	1
amenities	2	close to local shops and bognor	1	Quiet relaxed	1
area of outstanding beauty	2	close to place of work	1	quiet roads	1
attractive	2	close to relatives, access to sea	1	quiet safe for children	1
availability of property	2	close to sea front	1	quiet safe place for children	1
away from london	2	close to sea, good doctors, chemist	1	quiet sea location	1
beach and shops	2	close to sea, shops, bus	1	quiet surroundings	1
beautiful village and clean beach	2	closeness to sea, shops, bus	1	quiet unbuild surroundings	1

Summary of "Why Chose Middleton"	Count	Summary of "Why Chose Middleton"	Count	Summary of "Why Chose Middleton"	Count
being part of a small village(then)	2	community feeling	1	quiet village	1
calm traffic, shops, clean pavements	2	community life and local shops	1	quiet village atmosphere - not now!!	1
character	2	convenience for everything	1	quiet village community close to sea	1
close to sea and countryside	2	convenience of shops	1	quiet village location	1
close to work	2	convenience to shops and health centre	1	quiet village location with all facilities	1
closeness of sea and shops	2	convenience to shops1	1	quiet village off beaten track	1
Clymping gap and the sea	2	convenient for Gatwick	1	quiet village with all facilities	1
coastal, close shops	2	convenient for shops	1	quiet!	1
community life	2	convenient shops, bus etc	1	quiet, easy to park	1
convenient for work	2	convenient to shops and health centre	1	quiet, easygoing	1
cost of housing	2	cost of property, social life	1	quiet, flat, close to towns and sea, cost	1
countryside	2	country village but essential shops	1	quiet, flat, near towns and beach, cost	1
countryside and sea	2	Country/seaside atmosphere	1	quiet, flat, near towns and sea, cost	1
dignified ambience	2	cummunity spirit, friendliness	1	quiet, peaceful	1
doctors	2	did have adequate footpaths - not now	1	quiet, peaceful,sea	1
doctors, shops all nearby	2	ease of access	1	quiet, pleasant environment	1
easy access to chichester, portsmouth and london	2	easy access to shops and surgery	1	Quiet, relaxed	1
easy access to coastal area	2	environment	1	quieter away from london	1
easy access to littlehapmton/ sea	2	environmental advantage over bognor	1	quieter life after london	1
easy access to services	2	essential services	1	quieter roads 5 years ago	1
environment and location	2	essential services to hand	1	quiet, convenient services	1
finding suitable house for our needs	2	family holiday home	1	quietvillage off beaten track	1
friendliness	2	family living close by	1	reccommendation	1
Friendly atmosphere	2	family safety	1	relatives	1
friendly nice neighbourhood	2	felt safe and at home	1	residents	1
friendly peaceful village community	2	felt very sfae and at home	1	rural aspect	1
general ambience	2	fewer cars than at present	1	rural aspect, quiet	1
generally peaceful at that time	2	finding a perfect house	1	rural atmosphere	1
good facilities, easy access to A259	2	food shopping was good 10 yrs ago - not now	1	rural life and open spaces	1
good housing	2	friendly people and experience on holiday	1	rural peace with village atmosphere	1
good quality of life, better neighbours	2	friends already here	1	safe , quiet, by the sea,	1
good residents	2	from london to countryside	1	safe and friendly area	1
good shops, good pub	2	good amenities	1	safe area for all ages	1
housing quality	2	Good housing large gardens	1	safe peace and calm	1
how clean it was	2	good local amenities	1	safe vilage life	1
ideal retirement area	2	good neighbours	1	safe, peace and calm	1
its amenities	2	good public transport	1	safety	1
law and order	2	good sense of community	1	safety	1
less congestion than towns	2	greensward on shore(not concrete)	1	sea and country access	1
like the countryside	2	high standard of housing	1	sea and small village community	1
living near sea	2	home by the sea with no tourists	1	sea and woodland	1
location for work and amenities	2	hope for peace and quiet	1	sea and woods	1
location, village life, sea	2	human scale	1	sea village life, countryside, quiet	1
love middleton sea and ambience	2	husband born here	1	sea/ country combination	1
Lovely village setting	2	it is a sealed village	1	sea/country combination	1
near beach & sea	2	laid back attitude	1	seafront land bought by parents	1
near family	2	Laid back living	1	seaside location	1
near relatives	2	large garden	1	seaside, convenient for shops	1
near sea, rural, less traffic	2	less crime	1	seaside, costs	1
nice place to live	2	less traffic, less polutioh, less people	1	seaside, peace and quiet	1
no overcrowding, proximity of vilage and beach	2	liked the area	1	seaside,peace and quiet	1
no through roads	2	liked the house	1	seclusion	1
not much traffic	2	little possibility of increased house building	1	semi rural location	1
peace and quiet, close to open fields	2	lived in MOS since a child	1	sheltered accomodation	1
peace and quiet, village atmosphere	2	local amenities,bus service friendliness	1	sheltered housing	1
peace and tranquility, 2 medical centres	2	local shops and sports club	1	shop and private road	1
peaceful environment close to sea and countryside	2	local shops, doctor and P.O.	1	shops	1
peaceful existance	2	local shops, doctors and bus route	1	shops and private road	1
peaceful village	2	location and facilities	1	size of property	1
peaceful village and wonderful beach	2	location of house	1	slow pace of life	1
peaceful village atmosphere	2	loction and facilities	1	slower pace of life	1
peaceful, nice environment	2	london to the countryside	1	small community, countryside, and sea	1
pleasant location	2	lovely beach and safety	1	small quiet seaside village	1
pleasant quiet area	2	lovely unspoilt beaches	1	small quiet village	1
pleasant village relatively safe	2	low cost area by sea	1	socially important	1
pretty parish	2	my cottage	1	space, fresh air, community	1
proximity of sea and countryside	2	near a friend	1	standard of living	1
proximity to sea, peaceful environment	2	near beach	1	strong sense of community	1
quiet and little vandalism	2	near buses, local shops, beach	1	suitable house	1
quiet and peaceful	2	near parents	1	suitable housing	1
quiet friendly area	2	near sea and countryside	1	the beach	1
quiet friendly village by the sea	2	near sea and parents	1	the countryside	1
quiet life style	2	near sea and relatives	1	the sea	1

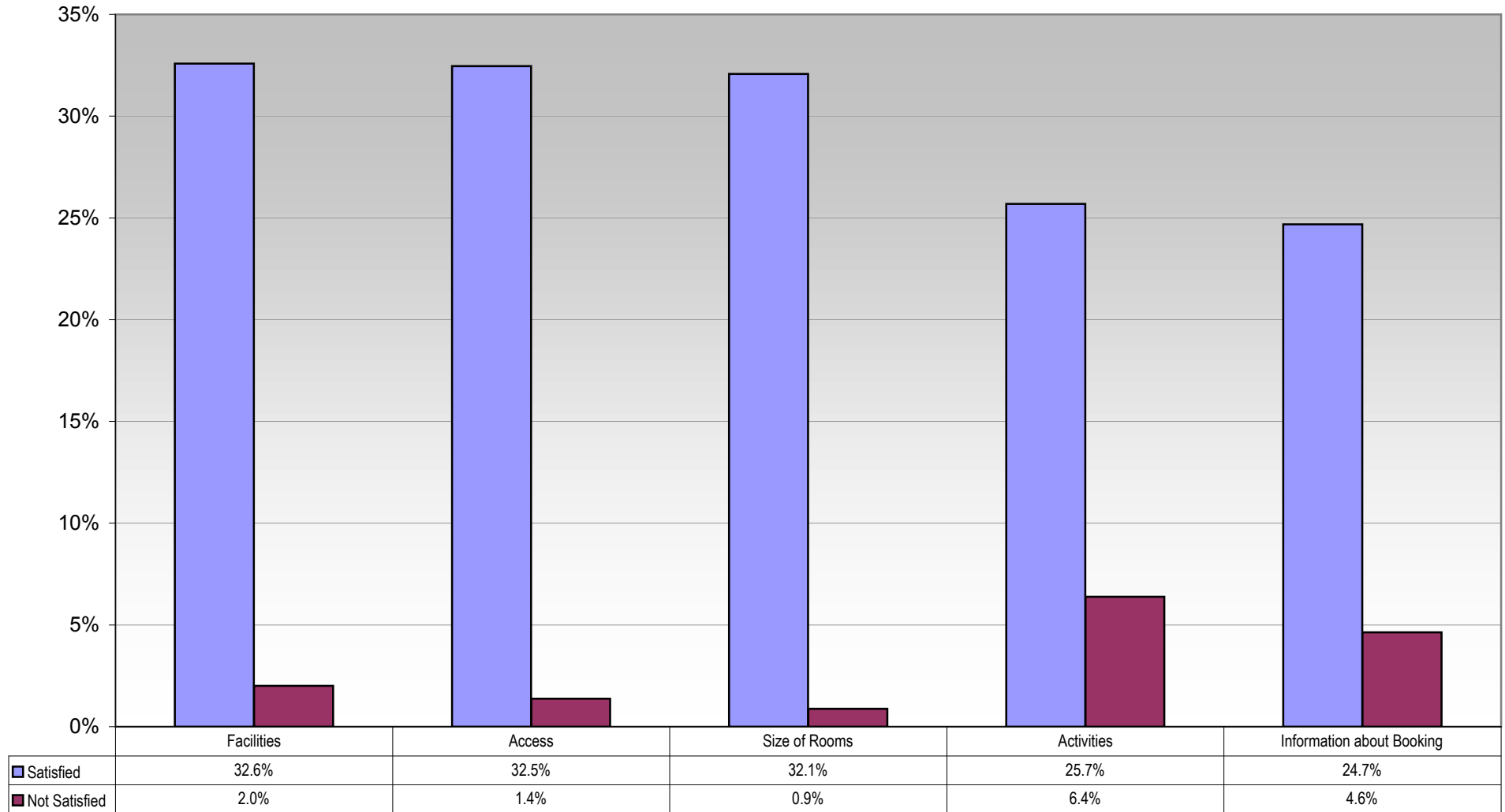
Summary of "Why Chose Middleton"	Count	Summary of "Why Chose Middleton"	Count	Summary of "Why Chose Middleton"	Count
quiet parish	2	near sea, attractive village setting	1	thought it was nice clean safe village - wrong	1
quiet refined village	2	near sea, close to family	1	thought it would be quieter	1
quiet village with essential services	2	near sea, good shops, schools	1	thriving local community	1
quiet, local shops	2	near sea, quiet pleasant to view	1	to be near family at barnham	1
quiet, slow pace of life	2	near sea, quiet, pleasant views	1	traditional village atmosphere	1
reasonable house prices	2	near sea, village location, shops and schools	1	undeveloped beach	1
reasonably quiet	2	near shops for disabled parent	1	uniformly pretty	1
relatively peaceful and semi rural	2	near to place of work	1	unlike now!	1
rural lifestyle	2	near to relatives	1	unspoilt countryside a	1
rural location	2	near to relatives, access to sea	1	very different now!	1
rural setting	2	near to sea and relatives	1	very pleasant area and sea views	1
safe	2	near to shops for disabled parent	1	village atmosphere, large open green spaces	1
safe and quiet area	2	near to the family	1	village atmosphere, large open spaces	1
safe area for all ages	2	near work	1	village atmosphere, walks by sea	1
safe for children	2	near work and family	1	village community and shops	1
safety for children	2	Nearby secondary school	1	village community with shops, many now lost.	1
sea	2	nearer my family	1	village life and availability of services	1
sea and country walks	2	nearness of family	1	village life, availability of services	1
sea, place for christian worship	2	Nearness to sea	1	village life, countryside and shoreline	1
seaside	2	neighbourhood	1	village near sea	1
semirural seaside	2	neighbourliness	1	village/community feeling	1
shopping facilities	2	nice area to live in	1	village community	1
situation and lack of developments	2	nice area, younger people in flansham	1	weather, far from maddening crowds	1
size and accessibility to other places	2	nice community	1	walking distance to shops	1
small friendly environment	2	nice house in nice location	1	walking distance to shops and medical centre	1
sports club	2	nice little village	1	walks by sea	1
still a village	2	nice quiet village	1	was a small quiet safe unspoilt village - not now	1
tennis club	2	nice safe area	1	we were born here!	1
the general district	2	nice village	1	weather, far from maddening crowds	1
the right house	2	nice village and location	1	weather, friendly people	1
to live in a small village	2	no cycling on pavements by adults	1	wonderful beach area	1
uncongested rural village	2	no highrise	1	work and family	1
unspoilt village atmosphere	2	No phone masts	1	ye olde world feel to house styles	1

Summary of "Concerns"	Count	Summary of "Concerns"	Count	Summary of "Concerns"	Count
building development	293	young people behaviour outside onestop esp.evening	1	poor and inconsiderate driving	1
traffic	185	dangerous and inconsiderate parking	1	poor planning	1
phone masts	158	young people on mobiles not looking where going	1	proliferation of phone masts	1
too many houses	21	youths getting bored	1	removal of hedges and trees	1
speeding traffic	10	hooligans	2	replaced by high density housing	1
developments	9	loss of post office	2	road layout in village	1
antisocial behaviour	9	loss of open spaces	2	roads become much more busy and dangerous	1
we don't like the vicar	8	housing developments on green sites	2	roads become v.busy and dangerous	1
traffic speed	8	increase in children	2	rowdy groups of youths	1
litter	7	loss of local shops	2	safer crossing A259/ yapton rd.	1
dangerous junction at comet corner	4	local teenage yobs	2	safety and security	1
closing foot paths	4	islands and parking main road	2	shops changing to housing	1
all above	4	lack of activity for children	2	develops without extra facilities	1
wind turbines	3	barriers in twittens	2	developments spoiling village character	1
vandalism	3	lighting in ancton lane and kingsmead rd	2	developments out of character	1
traffic developments	3	youths, foul languages, intimidating groups	1	speed, attitudes, noise	1
speed of traffic	3	Less health service	1	developments on green field sites	1
police	3	large developments	1	amount of old people's properties	1
better dog bins	3	lack of amenities	1	Developments generating traffic	1
closure of shops	3	loss of green spaces	1	developments and no inspections by council	1
all mentioned	3	increase in housing density	1	teenage groups	1
dog fouling on beach	3	increase in flats and population	1	too built up	1
young people facilities	2	housing developments	1	too many estate agents in village	1
contravened planning regs - manor farm	2	loss of village life	1	too many estates	1
cycling on pavements	2	low cost of property	1	developments above 2 storey	1
why don't we get a ratesdiscount on private estate	2	makes more traffic and speeding	1	too many houses pressure on resources	1
vandalism, speeding, law & order	2	many more houses but no change to road, school med	1	too many houses put pressure on resources	1
bias to older people	2	housing development without change in infrastru	1	too many old people developments	1
unsocial behaviour of young people	2	high density developments	1	too many old persons developments	1
demise of greenfields and nalgo lodge	2	more vandalism after hours	1	too many outsiders moving in	1
uncontrolled vandals	2	much increased traffic congestion	1	amount of traffic	1
traffic increase volume and speed	2	global warming	1	development not in keeping with the area	1
building matchbox apartments	2	new buildings out of character	1	all given	1
traffic and noise polution	2	flooding	1	traffic and development	1
too much infill building	2	new housing without services	1	development has been allowed on flood areas	1
too much housing without increased infrastructure	2	none	1	traffic and parking	1
development risk of clymping gap	2	failure to maintain roads	1	traffic and phone masts	1
all of above	2	congregation of youths around onestop	1	traffic bypass bog to chi	1
superficial traffic measures	2	oap properties	1	traffic development	1
speeding traffic to elderly people	2	old people properties	1	deterioration of youth behaviour	1
Developments fill doctors surgeries	2	omet corner	1	traffic developments,phone masts	1
speeding cars near shops	2	on sea lane estate	1	traffic fromn new estates	1
speed of traffic in elmer road	2	one stop open too late	1	traffic increase due to in fill building	1
building over drainage ditches and free flow areas	2	out of character developments	1	destruction of old buildings	1
size of delivery vehicles	2	over 55's developments	1	traffic problems	1
developments without better basic services	2	over development causing traffic probs	1	any shop closures	1
coastal protection	2	Over development, heavy traffic	1	traffic speed and size	1
pleasant surroundings	2	parking	1	traffic speed, HGV's etc	1
nothing for kids to do	2	parking on yellow lines	1	density housing	1
not enough big shops	2	parking places across t junction at shrubbs field	1	demolition and rebuilding much bigger houses	1
empty shops	2	colin mansfield!!!	1	unsocial behaviour, Grumpy refuse collector	1
new developments on green land	2	phone mastsss	1	Untidy shopping area	1
narrow roads	2	dog fouling	1	urgent major improvement of comet corner	1
general lack of care by public and council	2	distubance by youngsters using onestop	1	Delay of emergency services	1
more traffic due to new houses	2	decrease facilities	1	any increase in housing	1
groups of youths hanging around	2	village must not be overdeveloped	1	beach	1
grown too fast	2	volume of traffic on a259	1	bollards outside sunset salon narrow road too much	1

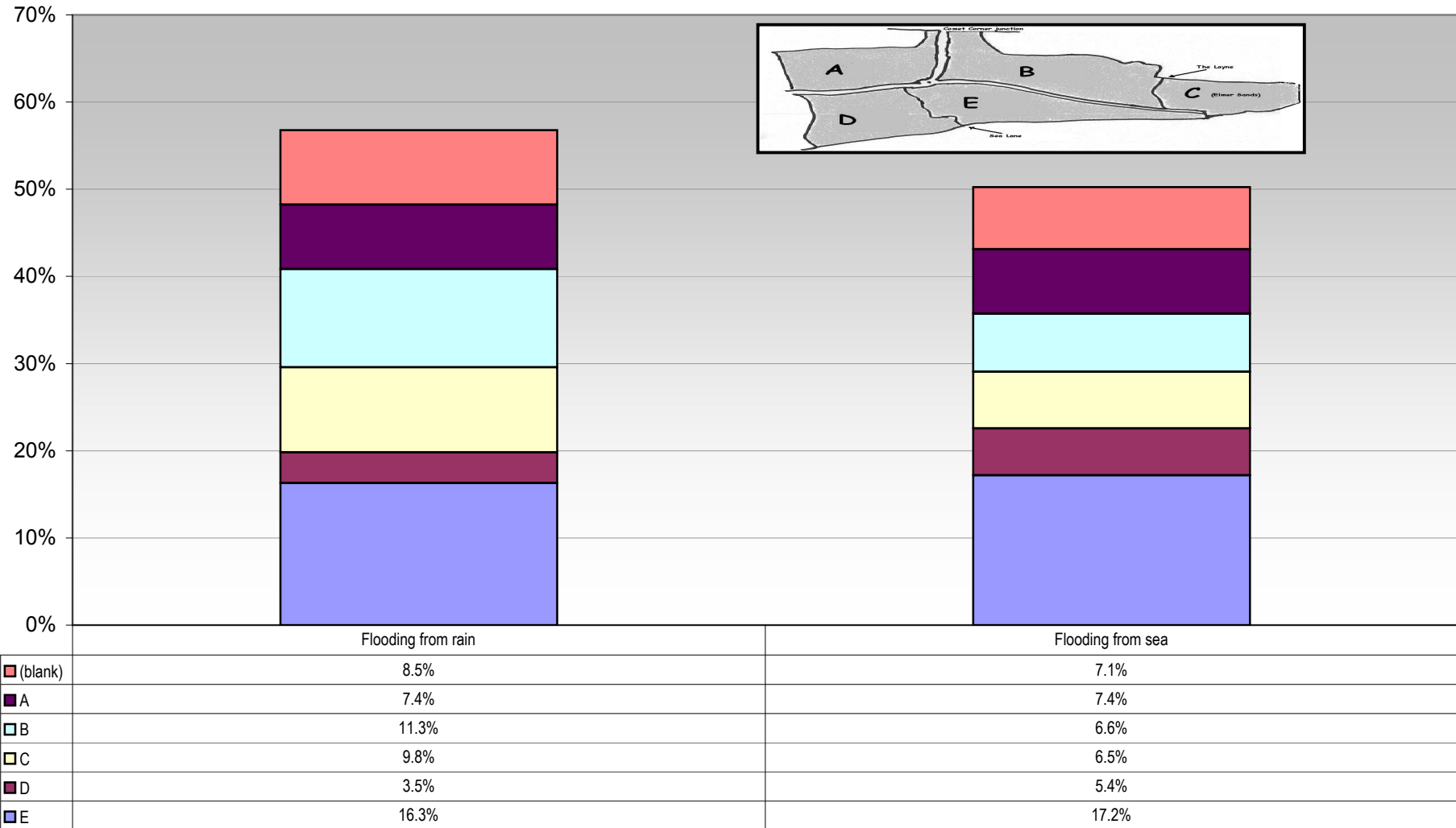
Summary of "Local Groups"	Count	Summary of "Local Groups"	Count	Summary of "Local Groups"	Count
youth club	41	working mens club	2	leave as is	1
cinema club	36	young persons centre	2	library	1
computer group	28	youth centre	2	local footpath walks	1
activities for teenagers	13	a well run and controlled youth club	1	lunches available in Jubilee Hall	1
more for teenagers	6	a worms wood conservation group	1	meeting place for young people	1
teenage youth group	4	adult education- calligraphy, aromatherapy	1	modern ballroom and latin american dance	1
areas for youths 13-16's	3	affordable meeting room with storage facilities	1	more advanced evening art group	1
more social activities	3	art/crafts for youngsters	1	more evening adult education	1
more use of jubilee hall for youngsters	3	badminton for fun	1	more for 40-65yrs.	1
sports club - reasonable prices	3	ballet, modern dance	1	more nighttime entertainment	1
theatre/cinema club	3	bistro	1	more opportunities via church	1
allotments	2	bowling, live music	1	morris dancers	1
anything for younger people	2	british legion	1	Not bothered	1
anything to encourage kids off the streets	2	carpentry, woodturning and model making	1	old building crafts	1
art classes	2	charity group	1	old folks groups	1
ballroom dancing	2	choir	1	parent and toddler playgroups	1
bridge club	2	choir, folk club, country club	1	rambling club	1
café culture, lifestyle café	2	cinema club, belly dancing	1	reading room	1
cinema club and theatre	2	cinema club, book circle	1	skate park or basketball post in shrubs field	1
educational talks	2	cinema with disabled access	1	snooker, darts	1
entertainment at village hall	2	clubs for teenagers	1	social club	1
gardening by beginners	2	clubs in evening for those at work	1	social club for teenagers	1
internet café	2	computer and walking group	1	social dancing	1
leisure centre subsidised for kids and elderly	2	computer training	1	something for 20-50 yrs not involving alcohol	1
lively modern evangelical church	2	computer, walking groups	1	something for teenagers to reduce boredom	1
lunch club	2	computers, table tennis, chess	1	something for teenagers, skatepark	1
metal detecting	2	conservation group	1	something for the young	1
none	2	country crafts	1	something to keep children off streets	1
Nursery for under 2's	2	dance classes	1	something to keep children off the streets	1
photographic club	2	dancing classes ballroom/latin american	1	stoolball advertised	1
sailing club	2	discussion group	1	strip club	1
skateboard park	2	evening adult education	1	Sunday schools for children	1
social club for all ages not just oaps and teens	2	evening and weekend exercise classes	1	theatre club	1
social club for elderly	2	Evening educational classes for 14-64 age	1	toddler activity group	1
social club for men	2	Fishing, boating, gardening, History	1	tree planting schemes	1
something for teenagers	2	for teenagers, skatepark, 5-a-side	1	walking	1
swimming pool	2	happy as things are	1	walking group for weight loss	1
tennis courts	2	historical	1	warm cinema club	1
travel club	2	history, environment	1	well run youth club	1
'village friend' group like yapton	2	horticultural	1	young people meeting/social area	1
walking club	2	jazz club	1	young peoples activities indoors and out	1
Whist & domino clubs	2	jazz night in shrubs filed	1	youth activities	1

Summary of "Facilities"	Count	Summary of "Facilities"	Count	Summary of "Facilities"	Count
seating	28	benches along beach front	1	seating on bank in village	1
skate board park	11	benches on path facing pond	1	seating on sea front	1
more dustbins in area	7	better playground, skate ramps	1	seats along main road	1
skate ramp on shrubbs field	7	bins and seats opp.church	1	seats along main road for elderly	1
meeting place for teenagers	4	bowling alley	1	seats at top of beach(end west drive)	1
more for young people	4	bycycle rack at playing fields	1	seats attract youths and unsocial behaviour	1
bench near elmer stores	3	changing rooms/ toilets at larksfield for football	1	seats in centre by shops	1
christmas lights	3	coffee/tea shop- café	1	seats in elmer	1
facilities for young people	3	community warden or police in village hall	1	seats near chemist	1
flood lighting in Shrubbs ball area	3	cricket net enclosure	1	seats on beach top	1
none	3	cricket nets	1	seats on grass outside shops	1
putting green	3	dog wardens, more planting in open areas	1	seats on top of beach	1
seating on sea shore	3	dog wardens, police foot patrols	1	seats outside chemist	1
youth centre	3	easier acces to beach for disabled and elderly	1	Smarten up pond area Extend range of shops	1
basketball	2	for children in evenings	1	something for adolescents	1
basketball court on shrubbs field	2	gathering place for the young	1	sport equipment, community hall	1
better access to beach	2	ice rink	1	sport facilities for teenagers	1
better playground in shrubbs field	2	improved childrens playground	1	sports hall	1
bread shop	2	increase of litter bins near takeaways	1	swimming pool	1
cemetery	2	library aat middleton health centre	1	swimming pool-shrubs field?	1
clean and well placed busstops	2	Like it as it is	1	tennis courts, squash, sailing club	1
clean beaches of seaweed	2	marina	1	tennis, squash,sailing club	1
country park near wormswood	2	more bus shelters	1	updated bus stops (in character)	1
Indoor soft play area for children	2	more dog bins	1	upgrade childrens facilities	1
more 'dogs welcome' signs	2	more facilities for kids on shrubbs field	1	vandal proof litter bins	1
more seating and litter bins	2	more for young people, basketball, skateboards	1	vegetated shingle into board on seafront	1
more seating for the elderly	2	more play equip. in larksfield	1	village lacks colour, flower beds etc	1
more shops	2	more play/sport equipment	1	village signs banner type- modern	1
more waste bins	2	more recycling bins	1	wider choice of shops	1
pathway merry end to shops	2	more seating between village and elmer	1	adult education	1
play equipment for older children	2	more seats along seafront	1	bakers	1
public library	2	more seats, main road, sea lane bend	1	basket ball area	1
safe cycling route	2	more social events fro oaps	1	bowls for all ages	1
seating in wormswood	2	more visible bus shelters	1	community meeting place	1
seating on beaches	2	new facilities would be vandalised	1	cycle lanes	1
seating on verges for elderly and infirm	2	New ramp for boat launching to replace steep one.	1	enlarge childrens play area(shrubbs)	1
seats on elmer road	2	night time park & ride to access facilities	1	flower displays like littlehampton	1
sport equipment	2	no more seating- it attracts jobs	1	good everyday food shops on bankside	1
sports equipment on playing fields	2	none needed	1	Highway maintainance	1
sports facilities for youngsters	2	open gardens	1	land for greenery	1
sunken flower garden with seating	2	path along beach for wheel chairs	1	litter bins at access to beach	1
telephone box in elmer	2	paved or tarmac walkway along top of beach, seats	1	more dog bins at key points	1
wider roads	2	picnic and parking area in middleton wood	1	more planting in open areas	1
youth club	2	picnic, parking area in middleton wood	1	more public seating on beach	1
youth club, affordable activities	2	play area at larksfield improved for children	1	new library	1
chemist at elmer	2	playarea at larksfield improved	1	path	1
covered area in park for teenagers	2	promenade from l'ton thru'elmer to felpham	1	playscheme during easter/summer holidays	1
more litter and dog bins	2	proper ramp for elmer sands boat club	1	police foot patrols	1
more litter bins	2	public tennis courts	1	properly policed and secured	1
park for smaller children	2	public toilets in centre of town for OAP's	1	public garden	1
public parking close to seafront	2	putting green at shrubbs field or clu	1	public parking close to sea front	1
skate park, meeting place	2	putting green on shrubbs filed or club	1	recycling at home collection by council	1
sports arena	2	reading room	1	recycling home collection by council	1
5-a-side pitches on playing fields	1	repair of sea defences	1	road sweeper and drain cleaner on private estates	1
a bench near elmer stores	1	replace verges with parking culverts in Lucking La	1	road sweeping and drain cleaning of private roads	1
a better walkway to climping as baird has blocked	1	seating along middleton road	1	seating	1
access to beach for disabled with electric scooter	1	seating and flower beds	1	seats at pond.Hockey on shrubbs	1
bakers shop	1	seating in field and near shops	1	street lighting	1
basketball and skating area	1	seating in side roads to encourage more walking	1	youth activities	1
basketball or skateboard area for youths	1	seating near shrubbs field	1		

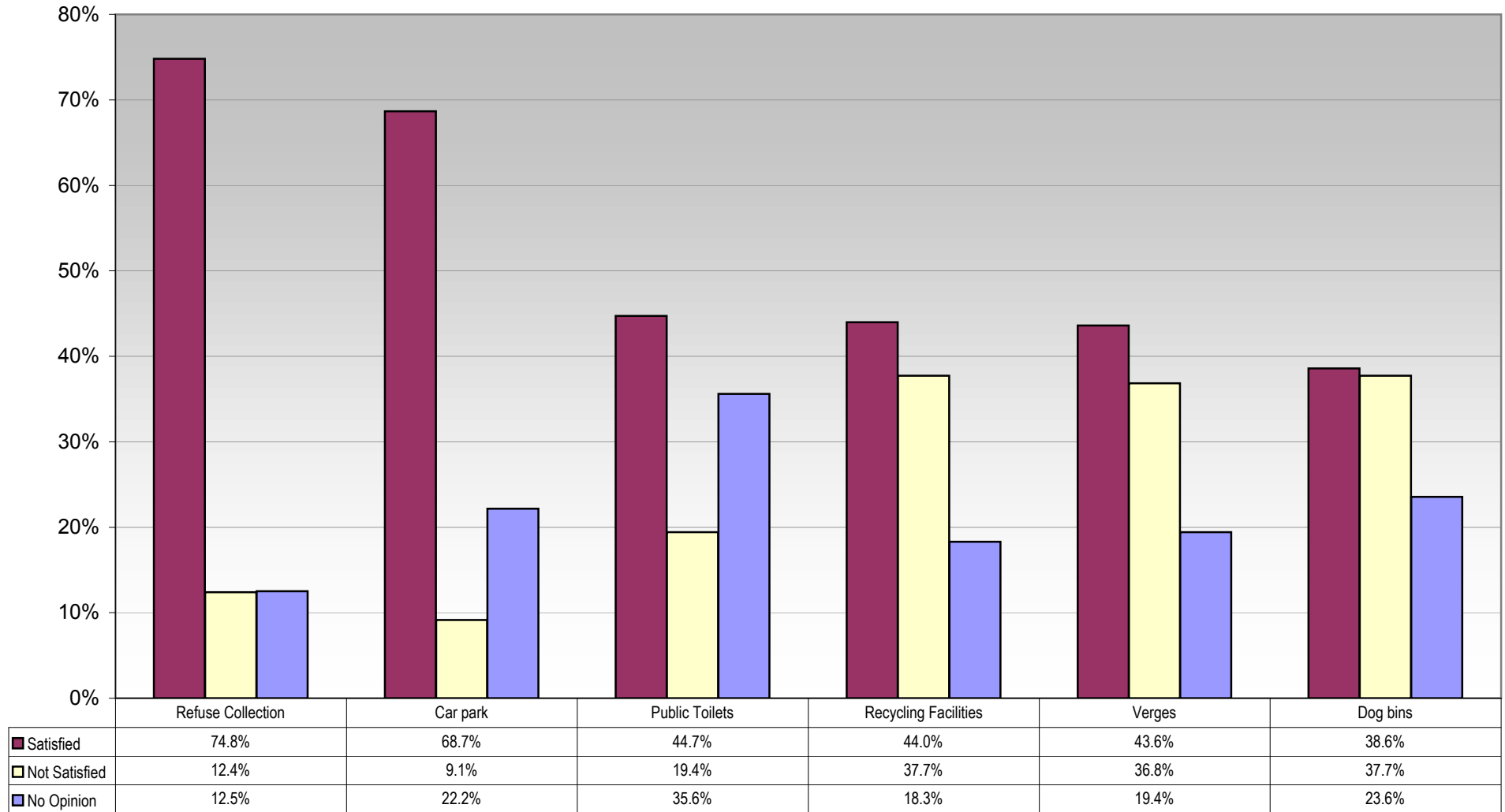
If you use the Village Hall are you satisfied with the following aspects?



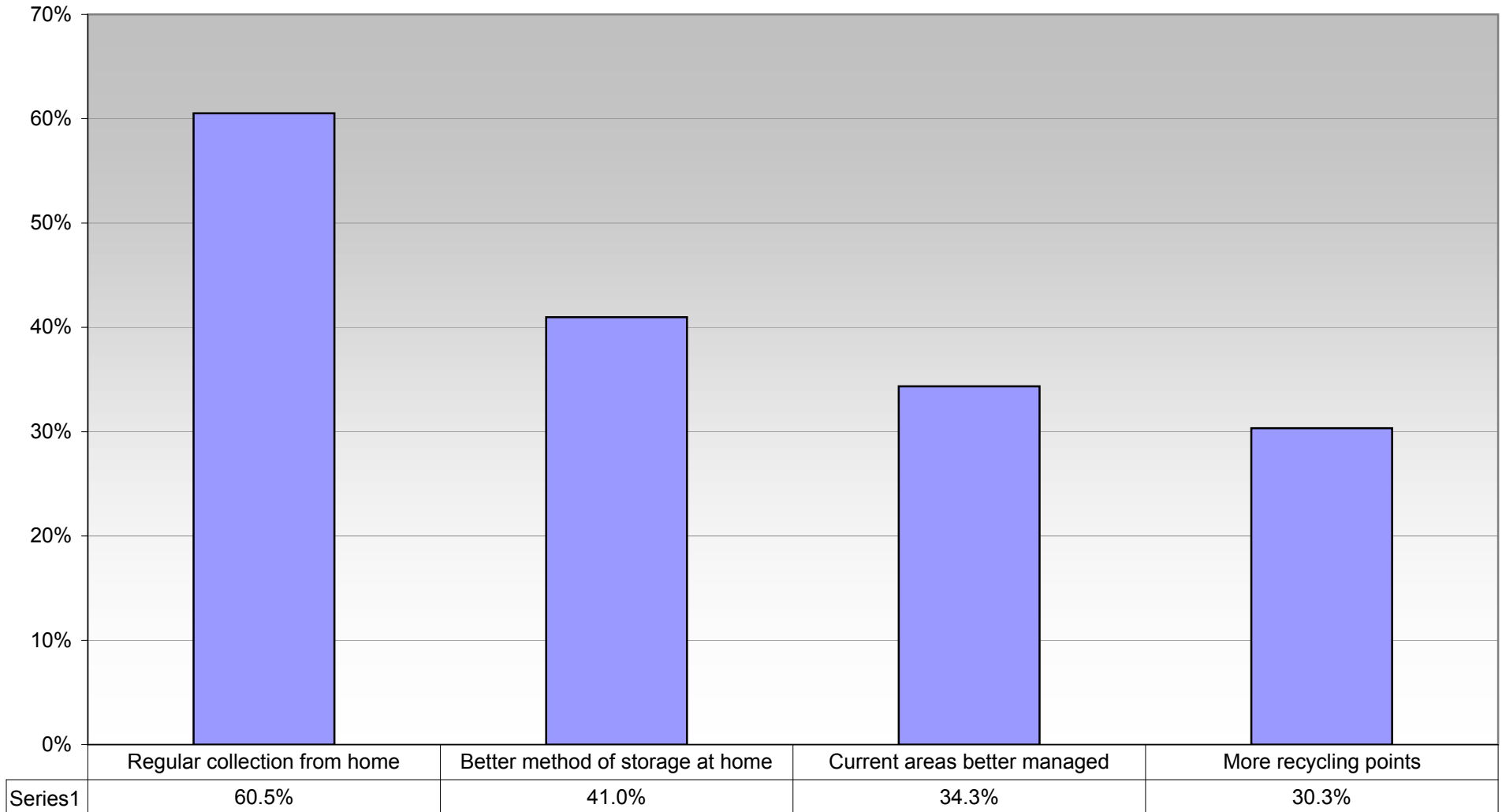
In the Parish, do you think something should be done about?



Are you satisfied with the following local services?



What would encourage you to recycle more items within the Parish?



Summary of "Architectural Features"	Count	Summary of "Architectural Features"	Count	Summary of "Architectural Features"	Count
all above	133	all mentioned plus smarten up churchyard	1	historical sites and features	1
Church	41	all of above	1	keep it green	1
church, thatched buildings	14	all of above	1	list cottages	1
church, flint and thatched buildings	11	all of it	1	local historic interest	1
church, cottages	10	all old buildings, church	1	maintain village size	1
all	8	all old features, red telephone boxes, finger post	1	Manor Farm! All above	1
as above	8	all period and rural features	1	Manor Farm!! All the above	1
thatched buildings	8	All pre war buildings e.g. railway carriages	1	Manor House, Church, Flint walls,	1
church, flint and thatched cottages	7	all structures over 100 yrs old	1	Manor House, church, flint walls, old buildings	1
church	7	any old architectural interest	1	middleton shops, pond	1
Thatched buildings	7	anything historic	1	Middleton shopping area`	1
all mentioned	6	appearance of shops	1	middleton shops	1
church, cottages, thatched buildings	6	boundary walls	1	Middleton shops, cabin, elmer pub	1
church, boundary walls	5	boundary walls, church	1	middleton sports club	1
flint walls	5	boundary walls, cottages and church	1	M-o-S Village Design statement	1
flint and thatched buildings	4	boundary walls, thatched buildings	1	new buildings in keeping	1
St Nicholas Church	4	bungalows - not changed to 4 bed houses	1	new buildings in sympathy with sussex feel	1
village monolith	4	church, flint and thatched buildings	1	no buildings over 2 stories	1
church, flint and thatched cottages	4	chruches - St Peregrines to be demolished?	1	old buildings and walls	1
flint	4	chruches- St peregrines - will it be demolished?	1	old buildings of architectural interest	1
all architectural features	3	church, thatched and flint buildings	1	old buildings, boundary walls, especially flint	1
all fine 50's architecture	3	church and boundary walls	1	old buildings, church	1
all listed	3	church , flint and thatches	1	old cottages	1
church, cottages, flint and thatched buildings	3	church , flint walls, thatched buildings	1	old flint and thatched buildings, church	1
old flint built church	3	church , old public houses	1	original cottages, thatches	1
old historic buildings	3	church and all listed	1	playing fields, open spaces, church	1
older buildings	3	church and old buildings	1	playing fields, open spacesss, church, flint walls	1
thatched buildings, church	3	church and old cottages	1	playing fileds left development free	1
all above	3	church and older buildings	1	pond, church, middleton sign	1
boundaries observed	3	church and thatched buildings	1	Prewar buildings like railway carriages	1
flint and thatched buildings	3	church and village shops	1	restrict replacing old properties with new	1
flint buildings	3	Church as it is	1	restrictions on pulling down ald buildings for new	1
all features in village design statement	2	church in present state any expansion in keeping	1	retain all above esp. capt.caldicot shop designs	1
all historic features	2	Church lovely as it is	1	retain all existing features	1
all of these	2	church pond flint walls	1	retain properties with unique features	1
all old features	2	church structure to remain unaltered	1	rural characteristics	1
all older buildings	2	church thatched buildings	1	save church from development	1
all original features	2	church, all above	1	save the church from development	1
allabove	2	church, boundary walls, listed buildings	1	st nicholas church should not be extended	1
anything over 100 years old	2	church, buildings in village centre	1	St.Nicholas Church	1
as listed	2	church, character houses and shops	1	st.nicholas should not be extended	1
as much as possible to retain rural nature	2	church, character houses/shops	1	tatched buildings	1
buildings of historic interest	2	church, cottages and walls of flint	1	thatch and flint buildings	1
caldecot shops, church	2	church, cottages, boundary walls	1	thatched building	1
church and boundary walls	2	church, cottages, flint and thatch	1	thatched buildings, church, boundary walls	1
church and church hall	2	church, cottages, flint and thatch buildings	1	thatched houses, church, cottages	1
church and historic buildings	2	church, cottages, thatched houses	1	thatched roof houses	1

Summary of "Architectural Features"	Count	Summary of "Architectural Features"	Count	Summary of "Architectural Features"	Count
church, cottages and thatched buildings	2	church, countryside, character of thatched buildin	1	thatched, flint, historic buildings	1
church, cottages, flint buildings	2	church, farms and barns	1	to late	1
church, cottages, open areas	2	church, flint and thatch buildings	1	typical sussex buildings, flint and thatched	1
church, flint buildings	2	church, flint and thatched cottages,	1	verges, thatched buildings	1
church, flint walls and cottages	2	church, flint and thatched houses and cottages	1	village centre shops	1
church, local shops	2	church, flint and thatches	1	village centre shops as they currently exist	1
church, parade of shops	2	church, flint buildings cottages	1	village centre, shops, church and cottages	1
church, shops	2	church, flint cottages	1	village hall	1
church, shops and character buildings	2	church, flint walls	1	village parade of shops	1
church, thatched and flint buildings	2	church, flint walls, thatched roofs	1	village parade os shops	1
church, thatched cottages	2	church, flint walls.	1	village shop façade	1
churches, cottages	2	church, former manor farm	1	village shops provides a heart	1
cottages	2	church, listed buildings	1	all historical	1
cottages, boundaries	2	CHURCH, MANOR House, flint cottages	1	all that enhances character	1
everything of historic interest	2	church, old buildings	1	architectural features	1
flint buildings	2	church, old buildings of historic value	1	bankside and hedges	1
flint walls, old signs, thatched buildings	2	church, old cottages	1	bow window, parade of shops	1
low density building	2	church, old cottages, flint and thatched buildings	1	church in present state, any expansion in keeping	1
maintain heritage	2	church, open spaces	1	church, cottages and thatches	1
middleton shops, elmer pub, cabin	2	church, thatched and flint cottages	1	cottages	1
old buildings which give character to village	2	church, thatched cottages and flint walls	1	era typical buildings	1
old shops on main road	2	church, thatched cottages, flint walls	1	era typical buildings, prewar etc	1
old village features	2	church, thatches,middleton shops	1	fields, placenames	1
older houses	2	church, village centre	1	flint and thatched cottages	1
thatched and flint buildings	2	church, village hall, shops	1	flint cottages	1
thatched buildings, cottages	2	church, walls, thatched cottages	1	flint walls	1
thatched cottages	2	church, walls, tudor shops	1	flint walls, old cottages, period shops	1
typical middleton houses	2	church,cottages and walls of flint	1	Give incentives to smarten up properties	1
village appearance	2	church,cottages, flint	1	grass banks and curtilages	1
wall near pond in village	2	churches - St peregrines to be demolished?	1	greensward and sea lane	1
boundary walls, village and scout halls	2	churches eg st.peregrinds-will it be demoplshed?	1	historic or period buildings	1
duck pond, green areas	2	churches, cottages, boundary walls	1	keep it as a village	1
greensward and sea views	2	churches, thatched buildings	1	listed buildings and those of historic interest	1
property	2	cottages, boundary walls, flint and thatch	1	no footpaths	1
restricted access to beach	2	cottages, flint and thatch buildings, church	1	no infill building	1
rose cottage and kettle cottage	2	cottages, flint and thatch buildings, pond, lanes	1	no more buildings	1
shop fronts	2	cottages, flint and thatched buildings	1	no street lighting	1
tudor style shops, church	2	cottages, flint walls, church	1	old cottages, period shops	1
village shop area	2	cottages, thatched buildings	1	period buildings	1
wild life habitat	2	cottages,boundary walls, flint and thatch	1	pond	1
thatch and flint buildings	1	design character of houses	1	pond area	1
all above and pond	1	design styles of middleton village	1	private beach	1
all above and shop fronts in village	1	don't change bungalows into 4 bed houses	1	public footpaths	1
all above of historical value	1	duck pond	1	reduce cars not widen roads	1
all above plus Middleton shopping parade	1	duck pond, Churches, old houses	1	reinstate pan names	1
all above plus rifles	1	existing features	1	reinstate peter pan shop names	1
all above plus sports club, village sign	1	Fish & Chip shop	1	sea lane bus shelter	1

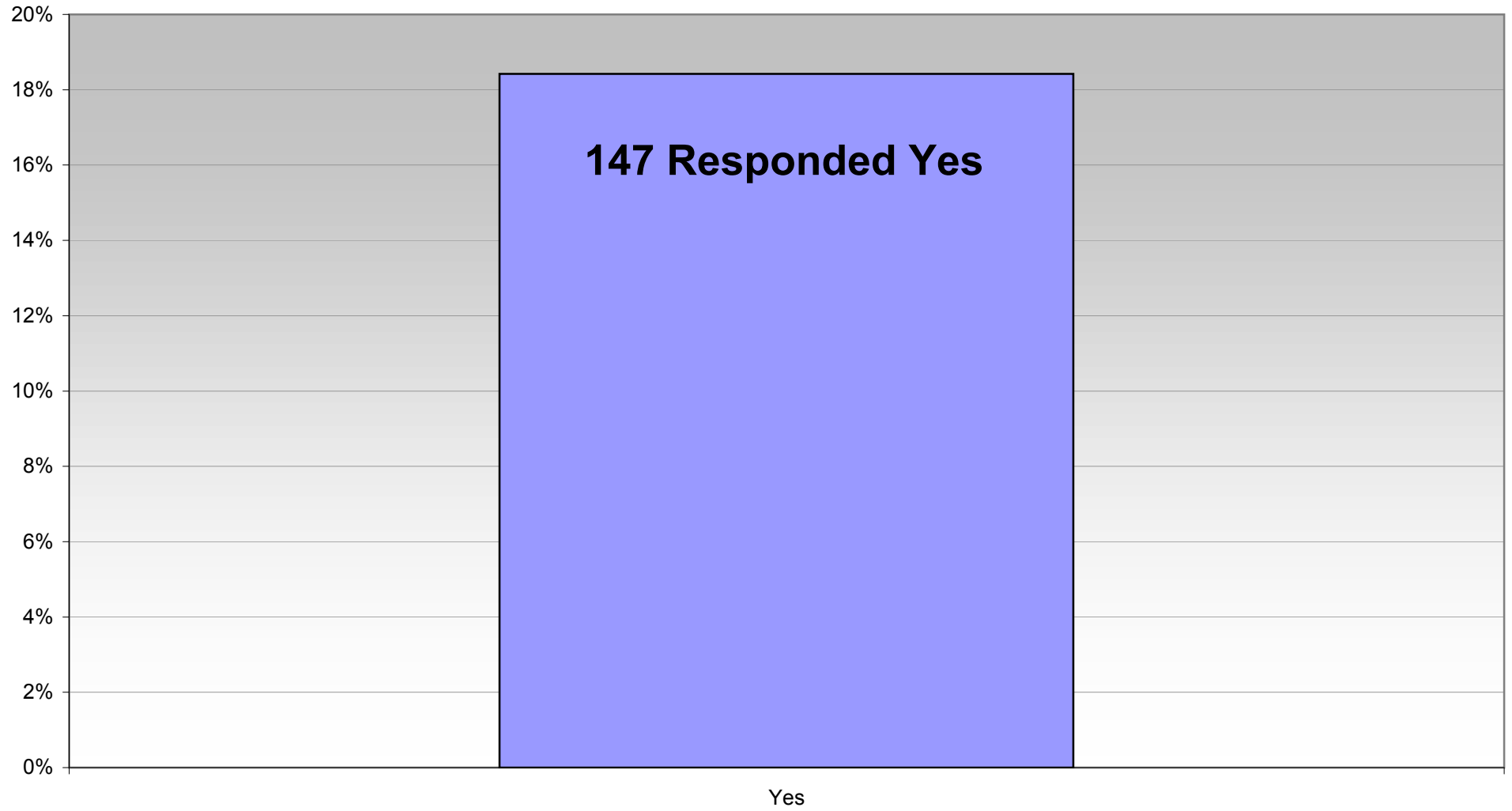
Summary of "Architectural Features"	Count	Summary of "Architectural Features"	Count	Summary of "Architectural Features"	Count
all above sports club, manor house, village sign	1	flint and thatched	1	Sea Lane estate	1
all above unless it becomes dangerous to life	1	flint and thatched buildings, church, sea front	1	sea lane, greensward	1
all above with historical value	1	flint and thatched buildings, village pond	1	Shrubbs Field and PlayPark	1
all above, and pond	1	flint cottagers	1	thatched buildings, anything historic	1
all above, especially capt.caldicots shop designs	1	flint walls and all above	1	thatched properties	1
all as above	1	flint walls and cottages	1	traditional materials used on any extensions	1
all buildings of character and age	1	flint walls and thatched buildings	1	tudor shops	1
all Capt.Coldicott's buildings	1	flint walls, church	1	twitten footpaths	1
all established building	1	flint, thatch	1	village aspects, church, open areas, shrubbs field	1
all established buildings	1	genuine old cottages, walls etc	1	village shops	1
all existing features	1	genuine old cottages, walls etc.	1	village shops bankside	1
all local historic interest	1	grass verges, greensward, individual houses	1		

Summary of "Natural Features"	Count	Summary of "Natural Features"	Count	Summary of "Natural Features"	Count
all above	255	duck pond, shrubbs field	1	trees,open spaces, grass verges	1
village pond	66	flower borders	1	trees,pond,verges	1
Pond	20	flower borders, village pond	1	verges	1
all	13	grass verges, flower borders, trees	1	verges, open space	1
open grass spaces	12	grass verges, hedges, trees	1	village hall	1
all natural features	11	grass verges, open grass spaces	1	village pond a disgrace and needs cleaning out	1
Grass verges	11	grass verges, open spaces, trees	1	village pond and all above	1
all mentioned	10	grass verges, trees	1	village pond and all green features	1
open spaces	9	grass verges, trees, hedges, open spaces	1	village pond and trees	1
open grass spaces	8	grass verges, trees, hedges,open spaces	1	village pond and verges	1
village pond, grass verges	8	grass verges, village pond	1	village pond, bankside, playing field	1
Trees	8	grass verges,flower borders,trees	1	village pond, bankside, playing fields	1
grass verges	6	green open land	1	village pond, beach and greensward	1
open spaces, pond	5	greensward and all open spaces	1	village pond, beach, greensward,hedges, trees	1
trees	5	greensward, pond, grass verges and trees	1	village pond, flower borders	1
village pond, trees	5	greensward, pond, grass verges, trees	1	village pond, flower borders and trees	1
all above plus greensward	4	greensward, verges, trees, hedges	1	village pond, flower borders, grass verges	1
all listed	4	hedges and trees	1	village pond, flower borders, hedges	1
allabove	4	immediate coastal pathes and greensward	1	village pond, grass bank at Midd.shops	1
as above	4	keep pond topped up, open spaces, trees and hedges	1	village pond, grass verges,	1
pond, open spaces, trees	4	keep village countrified	1	village pond, grass verges, greensward	1
village pond, grass verges, trees	4	l trees, pond	1	village pond, grass verges, open spaces	1
village pond, trees, hedges	4	more open grass spaces	1	village pond, grass verges,trees	1
village pond, trees, open spaces	4	old historic buildings	1	village pond, green	1
village pond, trees, verges	4	open grass spaces, grass verges	1	village pond, green and greensward	1
village pond	4	open grass spaces, hedges, grass verges	1	village pond, greensward and all above	1
all of above	3	open grass spaces, trees	1	village pond, open spaces	1
pond, open spaces, grass verges	3	open grass spaces, trees & hedges	1	village pond, open spaces and trees	1
trees and hedges	3	open grass spaces, trees, hedges	1	village pond, open spaces, beach frontage	1
trees, open spaces, grass verges	3	open grass spaces, trees, pond	1	village pond, playing fields, flower borders	1
village pond and open grass spaces	3	open grass spaces, trees, village pond	1	village pond, poultry farm!! And spring bulbs	1
village pond, trees, grass verges	3	open space and trees	1	village pond, shops and natural features	1
all above	3	open spaces and playing fields	1	village pond, style of village shops	1
open spaces	3	open spaces and trees	1	village pond, trees and hedges	1
all above esp. open grass spaces	2	open spaces and verges	1	village pond, trees hedges, open grass spaces	1
all above esp. open spaces	2	open spaces, greensward, trees, pond	1	village pond, trees, and hedges	1
all above to an acceptable standard	2	open spaces, playing fields	1	village pond, trees, hedges, open grass spaces	1
all original features	2	open spaces, trees and hedges	1	village pond, verges, sea front	1
all trees over ten feet	2	open spaces, trees private roads, sea	1	village pond, verges, trees	1
grass areas and village pond	2	open spaces, trees, hedges, village pond	1	village pond,open grass space	1
grass verges, trees, hedges	2	open spaces, trees, private roads, sea	1	village ponds	1
open grass spaces, verges, trees, hedges	2	open spaces, trees, village pond	1	village ponds, flower borders,trees hedges	1
open green spaces	2	opens spaces	1	villagepond and verges	1
open spaces, trees & hedges, beach access	2	playing field, pond	1	woodland, fields	1
pond and open grass spaces	2	plentiful trees - more protection orders	1	woods, open grass spaces	1
pond trees and open spaces	2	pond , sea lane banks,	1	woods, open grass spaces, more flower borders	1
pond, grass verges	2	pond all above	1	all natural things	1

Summary of "Natural Features"	Count	Summary of "Natural Features"	Count	Summary of "Natural Features"	Count
pond, open grass spaces	2	pond and all above	1	appearance of the village	1
pond, open spaces	2	pond and grass verges	1	bove	1
Pond, verges, trees	2	pond and open spaces	1	circular hedge in west close has been butchered	1
retain all open spaces	2	pond and surrounds, open grass spaces	1	clymping gap	1
Shrubbs Field	2	pond and trees	1	daffodil planting	1
verges, trees	2	pond as it used to be without avenue of trees	1	developing plants on beach top	1
village pond, grass banks	2	pond flower borders,trees	1	get rid of verges to save council money	1
village pond, greensward, open grass spaces	2	pond trees outside new flats	1	grass banks in shop area	1
village pond, open grass spaces	2	pond trees, hedges	1	grass verges and open spaces	1
village pond, open grass spaces, verges and trees	2	pond, open grass spaces, flower borders	1	grass verges and spaces	1
village pond, open spaces, trees, hedges	2	pond, all trees	1	grass verges at shops	1
village pond, trees and hedges, open grass	2	pond, flower borders and hedges	1	grass verges properly maintained	1
character houses and shops	2	pond, grass areas,trees esp. sea lane	1	green spaces	1
climping gap	2	pond, grass verges, open grass spaces	1	hedgerows and ditches kept tidy	1
greensward, coastline	2	pond, grass verges, open spaces	1	keep village countrified	1
hedges	2	pond, greensward and all above	1	keep village features not urban	1
mature trees around st.nicholas church	2	pond, middleton Bank, geen areas	1	local shopping	1
open spaces and trees	2	pond, Middleton Bank,green areas	1	manor house, trees around st.nicholas	1
rural village look	2	pond, open grass areas, pathways to beach	1	more flower borders	1
surrounding farm land and country lanes	2	pond, open grass spaces, trees and hedges	1	more trees by car park and shops	1
trees & Hedges	2	pond, open grass spaces, verges and trees	1	more trees by shops and car park	1
trees, hedges	2	pond, open spaces,trees	1	more trees planted along verges	1
trees, shrubs and flowers	2	pond, playing fields, church	1	natural wild life	1
village atmosphere	2	pond, playing fields, church,	1	no formal plantings	1
worms wood and comet copse	2	pond, shops	1	no more development	1
Flower borders	2	pond, tree planting	1	no more developments	1
all above and vegetated shingle greensward	1	pond, trees along road	1	open fields	1
all above plus bankside and greensward	1	pond, trees and things natural	1	open fields within the parish	1
all above plus beach	1	pond, trees, and open spaces	1	open grass spaces, trees, hadges	1
all above plus beaches	1	pond, trees, grass, open areas	1	open spaces, grass verges	1
all above plus greensward and beach area	1	pond, trees, hedges, village green, sea lane	1	open spaces, trees	1
all above plus rifes	1	pond, trees, open spaces	1	open spaces, trees hedges	1
all above plus vegetated shingle greensward	1	pond, verges, greensward	1	playing field, trees, hedges	1
all above, clear seaweed	1	pond, woodland	1	Playing fields & playground	1
all above, sea shore and greensward	1	pond,,,, trees	1	Playingfields and playground	1
all above.	1	pond,grass verges, trees, hedges	1	plentiful tree popluation -more preservation order	1
All examples mentioned	1	pond,trees, hedges, flowers, pub	1	pond	1
all green and natural areas	1	pond,trees, verges	1	pond and verges	1
all green spaces and natural areas	1	ponds, spaces, trees	1	pond as used to be without avenue of trees	1
all listed plu footpaths	1	ponds, trees, grass open spaces	1	pond, sea lane	1
all listed plus footpaths	1	ponds, trees, grass, open spaces	1	pond, watermeadows, springs, trees, grass spaces	1
all mentioned but keep tidy.	1	ponds. Trees, grass, open areas	1	private beach	1
all named	1	put trees back along Elmer Road	1	private estates to maintain high standards	1
all natural areas	1	put trees back on verge of Elmer Road	1	remove seaweed to fertilize fields	1
all natural spaces	1	road sign at junction yapton rd. and elmer road.	1	sea and foreshore	1
all naturla areas	1	Shribs Field	1	shore cleared of flotsam	1
all of these	1	Shrubs Field	1	shore should be cleared of flotsam	1

Summary of "Natural Features"	Count	Summary of "Natural Features"	Count	Summary of "Natural Features"	Count
all plus beach	1	the immediate coastal paths, greensward.	1	shrubbs field, open spaces, trees hedges	1
all the above	1	traditional structures	1	the clymping gap	1
areas of relaxation	1	trees and hadges, vegetated shingle on beach	1	trees and hedges	1
as above, bulb planting has been great	1	trees and hedges,vegetated shingle on beach	1	trees around st.nicholas church, manor house	1
as above. More bulb planting	1	trees pond, verges	1	trees hedges	1
as listed	1	trees, flower borders, open spaces	1	trees hedges, flower borders.	1
beach	1	trees, open groand, pond	1	wildlife habitats existing and created	1
beach, middleton bankside, pond	1	trees, open spaces, pond	1	wildlife habitats, existing and created	1
beach, middleton bankside, pond.	1	trees, pond	1	clear seaweed	1
beach, open grass spaces, trees, hedges	1	trees, pond, hedges, all open spaces	1	do not ad suburban features	1
ditches, greensward, green and pond	1	trees, pond, hedges,all open spaces	1	fields along ancton lane	1
duck pond	1	trees, pond, verges	1		

Would you support investigating the possibility of having allotments in the Parish?



Summary of "Improvements"	Count	Summary of "Improvements"	Count	Summary of "Improvements"	Count
20mph on all estate roads	1	improve access to beach for swimming	2	promenade from elmer to felpham	1
20mph on estate roads	1	improve and tidy path in front of shops opp. P.O.	1	protect mature trees from chain saws	1
a bank	1	improve bus service in some areas	2	provide more to entertain youngsters	1
a centre like laburnum	1	improve camber on footpaths	1	public beaches cleared by council	2
a few more shops	2	improve childrens play areas	1	public transport	2
a supermarket nearer than Littlehampton	1	improve comet corner safety	1	quick removal of dumped rubbish	1
abolish home trading	1	improve comet corner safety	1	rebuild the shops opp.Elmer beach store - eyesore	1
abolish private roads	2	improve environment issues	1	reduce car speeds	1
action before another fatal accident	1	improve facades of elmer shops	1	reduce congestion around school	2
activities for teenagers in evening	1	improve facilities at medical centre	1	reduce house buildings	1
activities for teenagers in evenings	1	improve facilities for teenagers	1	reduce intimidation	1
addition of a bakery shop	1	improve facilities for young people	1	reduce litter	1
an amenity public garden	1	improve footpath in front of elmer shops opp.P.O.	1	reduce local taxes, these are crippling elderly	1
ancton lane - widening, lighting and drainage	2	improve 'one stop'	2	reduce loud music, shut pubs earlier	1
arun service station stop using road for parking	1	improve pavements	2	reduce noise from car radios	1
as above.	1	improve play area at larksfield for small children	1	reduce noise nuisance from neighbours	1
attention to all answers	1	improve play areas	1	reduce opening hours of off licences	1
attention to all my answers	1	improve policing to reduce unsocial behaviour	1	reduce rents/lease for shops	1
avoid over population	2	improve public transport	1	reduce speeding	1
avoid overdevelopment	1	improve public transport, better policing	2	reduce speeding and noise	1
b2132 north side footpath width and slope	1	improve road conditions	1	reduce speeding in village	1
baech access and toilets	1	improve road safety	2	reduce speeding vehicles by cameras or speed bumps	1
BAKERS SHOP	1	improve roads	1	reduce speedong and noise	1
bakers shop for fresh bread	1	improve sewage drains and flooding	1	reduce traffic	5
ban dogs from beaches	2	improve sewage, drains and flooding	1	reduce traffic speed	2
ban tetra masts	1	improve street cleaning	2	reduce traffic speed esp.Yapton Rd.	1
ban unsuitable shops	1	improve street lighting	2	reduce traffic speed, esp. Yapton Rd.	1
ban wind chimes near neighbours	1	improved policing of unsocial behaviour	1	reduce vandalism	1
beach access and toilets	1	increase awareness of any developments	1	reduce vehicle speed by cameras or speed bumps	1
beach clean up	2	increase awareness of developments	1	reducing our council tax	2
better access for elderly to beach	1	involve younger generation	1	reduction in noise, fireworks all year round	1
better bus access to surrounding towns	1	involving the younger generation	1	reduction of seaweed	2
better clearance of litter	2	junction at comet corner	1	refuse any moreredvelopment, in filling.	1
better equipment for toddlers at larkfield	1	keep as it is. No change	1	refuse collectors behave like jobsworths,leave bag	1
better facilities for elderly and disabled	1	keep beach private	1	regular action plan	1
better facilities for elderly, disabled	1	keep busstops clean and tidy	1	regular action plans	1
better lighting	2	keep it free of illegal immigrants	1	regular entertainment for elderly	1
better maintained alleyways	2	keep it tidier	2	regular security presence esp.evenings	2
better medical facilities	2	keep kids off street at nights	1	reinforcement of bylaws by presence of police	1
better parking near post office	1	keep post office	1	removal of abandoned cars	1
better paths	1	keep residential properties residential	1	removal of excess seaweed	1
better policing	1	keep verges free of rubbish	1	removal of seaweed	2
Better policing of traffic	1	keep village litter free	1	remove garage petrol sign	1
better publicity about what is available	1	keep young people forming threatening groups	1	remove grassy bank for more parking	1
better roads	1	keeping it clean	1	remove litter, better maintainance of verges	1
better shopping- baker, greengrocer	1	kept as country park	1	remove litter/ better maint. Of verges	1
better stocked supermarket	1	kids need more entertainment to reduce vandalism	1	remove metal signs on beach	1
Better street cleaning	1	kids need to be entertained	1	remove middleton garage and build shops and park.	1
better street lighting. Police presence	1	knock down unsightly shops	1	remove middleton garage -build shops and parking	1
better Sunday bus service	1	land south of A259 as country park	1	remove onestop-it degrades the village	1
better things for children to do	1	larger hall!!!	1	Remove the tiredness of the village.	1
better upkeep of all public areas, verges, litter	1	leaa vandalism around shrubbs car park	1	remove/close onestop	1
better value for money from police and wsc	1	leisure facilities for the young	2	remove/restrict the jobs	1
better variety of shops	2	less BBQ's and noise from CD music	1	remove/restrict jobs	1
better weed control on beach in summer	2	less building for older people	1	restaurant (other than pubs)	1
bring back village amenities	1	less building for the elderly	1	restrict amount of development.	1
build healthy living houses	1	less congestion from traffic	1	restrict any further house building	1
calm the traffic	2	less new houses	1	restrict development	2
calming traffic to protect walkers and cyclists	2	less new housing	1	restrict further development	1
camouflage Dukes motors	1	less traffic through village	2	restrict further homes being built	1
can't fault it !	1	less traffic, notable company vans	2	restrict replacement house to like for like	1
Cars drive more slowly	1	less traffic, slower	1	restrict residential development	1
Cars driving more slowly	1	Less vandalism	1	restrict speed to 20mph, parking one side of road	1
CCTV around car park,shrubbs field, jubilee hall	1	less vandalism	2	restriction of building	1
cctv IN CAR PARK, SHRUBBS FIELD, JUBILEE HALL.	1	less, slower traffic	1	resume use of beach end of sea lane	2
cget rid of teenagers!	1	Lighting	1	resurface middleton road	3
clamp down on anti social behaviour	1	lighting in sunnymead close	1	retain peaceful village	1
clamp down on lager louts after pub hours	2	limit increase in population	2	return of bakery to village	1
clamp down on vandalism	2	litter - no bins depite requests to Arun	1	road sweeping	3

Summary of "Improvements"	Count	Summary of "Improvements"	Count	Summary of "Improvements"	Count
clampdown on antisocial behaviour	1	litter clearance- end cootes lane	1	road sweeping. Litter removal	1
clean and recycle seaweed from beaches	2	litter cleared from verges	1	roads	2
clean beaches	2	litter everywhere	2	roads, safety to the community	1
clean the bus shelters daily	1	litter problem increasing	1	roundabout at comet corner	6
clean up scrub land on beach	1	litter under hedges	1	roundabout at comet corner	2
clean up scrubland on beach	1	locals throw stones at them at 2am!	1	safeguard local character	1
cleaner roads	3	low cost housing for rent or buy	1	safer controlled area for children to play	1
cleaner streets of litter and dog fouling	1	low cost housing to rent or buy	1	safer junction at comet corner	2
cleanliness - EPA does not seem to apply.	1	maintain beach frontage	1	safer pathways- free of vehicles and bicycles	2
clear litter	1	maintainance of footpaths	1	safer pavements	1
clear litter from verges	1	make comet corner safe	2	safer roads, more crossings	2
clearing of litter frequently	1	make less like one big housing estate	1	safety at comet corner	1
clearing of seaweed on Elmer beach	1	make sure all footpaths are properly maintained	2	satisfied with the status quo	1
clearing seaweed on elmer beach	1	measures to keep youths off street	1	Saturday surgeries reinstated at medical centre	1
close down hot food outlets	2	more access to beach for residents only	2	sea lane is a public road, available to all	1
coastal protection of greensward	2	more access to the beach for residents only	1	sea lane is public road, should be open to all.	1
coffee shop to drop in and meet others	1	more activites for young and teenage children	1	sea, river and rife defences	1
coffe shop to drop in and meet others	1	more activities for teenagers	4	seashore pathway	2
collection of papers and magazines for recycling	1	more activities for youth	1	seaweed removal from beachfront	1
collection of papers, magazines for recycling	1	more affordable social/sport club	1	seaweed removal from sea front	1
comet corner	1	more affordable sports/ social club	1	security for the old- police presence	2
comet corner - traffic lights asap	1	more benches	2	see more local policemen in and around village	1
comet corner- traffic lights asap	1	more bobby ob beat	2	see more police	2
communication with youngsters in evenings	1	more buses at reduced fares	1	shoot the kids!	2
concentrate on facilities for young	2	more consistency with bin collection days.	1	should lead to less vandalism/antisocial behaviour	1
concern about behaviour of groups of youths	1	more contact with lonely and housebound elderly	1	shut alldays shop	2
concern about behaviour of youths	1	more contct between elderly and youngsters	1	slow down the traffic	7
concerted effort against vandalism and litter	1	more control on planning	2	small skate ramp	1
constant barking!	2	more dog toilets	2	Smarten up - aim to become Village of the year	1
control dog walking on beach prior to 9am	1	more dog wardens and police	2	smarten up elmer hotel area	1
control dogs and teenage gangs in play areas	1	more effective policing	2	smarten up elmer shops	2
control dogs and teenagers in play areas	1	more facilities for young people	12	social club meetings	1
control dumping of cars	1	more facilities on field	1	social village hall for old people & disabled.	1
control excessive speed of cars in this area	1	more facilities on field-basketball pitch	1	somewhere for teenagers of the streets	1
control of anti-social behaviour after pubs close	2	more foot police patrols	1	somewhere for young people to meet and play music	2
control of dag walking on beach before 9am.	1	more footpaths over surrounding countryside	1	somewhere for youth to congregate	1
control of unruly and aggressive behaviour	1	more general meetings for public	1	sort out comet corner	3
control speeding	2	more grass cutting of verges	2	sort out comet corner -URGENT!!	1
control speeding cars for old people and animals	2	more litter bins	2	sort out parking on yellow lines and grass verges	1
control speeding traffic	4	more litter bins and fines	1	sort out parking on yellow lines and verges	1
control unruly youth activity outside onestop	1	more local events	1	sort out speeding cars	3
control youths who leave bus shelter filthy	1	more notice of what people want	3	sort out traffic problem at comet corner	1
control youths who use shrubbs car park as race tr	1	more parking at shops	1	sort out vandals and yobs	1
controlled development	1	more parking by shops in village	1	sort out youths in sundale lane	2
controlled youth club	1	more parking for disabled near beach	2	speed bumps in sea lane	1
council should keep public areas cleaner tidier	2	more parking spaces by shops in village	1	speed cameras in at least 2 places in village	1
covered seating on beach fronts	1	more paths by roadside	2	speed cameras in village	1
covered seating on beach fronts.	1	more police	1	speed of traffic	1
create well managed areas	2	more police p0resence is essential	1	speed restrictions	1
crime free, more policing	2	more police patrols	2	speed restrictions - traffic calming	1
cultural centre for the young	1	more policing against vandalism	1	speed restrictions elmer sand to yapton rd	1
curb anti social behaviour	2	more policing to stop vandalism	1	speeding traffic	1
curb vandalism and yobbish behaviour	2	more protection against vandalism	2	stop all building	1
curtail further housing	2	more provision for children special needs autism	1	stop all house building	2
curtailment of yob element and vandalism	1	more regular clean up of litter in street and path	1	stop any future modern developments	2
cut back on light polution	1	more restaurants	1	stop bonfires on beach	1
cut out vandalism and antisocial behaviour	2	more seating	1	stop building new houses	1
cut verges more frequently	1	more social life for active over 55's	1	stop bungalows changing to 4bed houses	1
cycle path along main road	1	more sports facilities for youngsters	1	stop development destroying the character of place	1
cycle path route	2	more street trees	1	stop development destroying the character of place	2
cycle path route - middleton road	2	more support for local shops	2	stop developments destroying character of place	1
cycle path to littlehampton	1	more trees	2	stop dog fouling of beach, paths, playing fields	1
cycle routes, paths	1	more trees along roadside	1	stop dog fouling on beach, paths, playing fields	1
DEFINITELY A PEDESTRIAN CROSSING AT ONESTOP	1	more trees, shrubs, flower displays	1	stop further building developments	2
design of comet corner	1	more upmarket pub and restaurant	1	stop further development	2
develop shrubbs field as focal point to village	1	more variety of shops	1	stop further housing development	2
Disallow unsuitable buildings.	1	more visible police presence	1	stop further property infilling	2
discouragement of further housing estate building	1	need a baker and deli	1	stop house building on meadows	1
dog foul bins	1	need some decent family pubs, no charity shops	1	stop house building on open spaces	1

Summary of "Improvements"	Count	Summary of "Improvements"	Count	Summary of "Improvements"	Count
don't allow bungalows changed to 4 bed houses	1	no bikes or scooters on pavements	1	stop jet skiing inside rock islands	1
don't change it	1	no change	4	stop long term parking in main road	1
don't know	1	no cycling on pavements	3	stop long term parking in middleton to elmer road	1
drain cleaning	2	no demolition unless absolutely necessary	1	stop more development	1
drain the swamp opposite the church,	1	no dogs on beach	1	stop more housing development	2
dual carriageway a259	2	no dumping of cars	1	stop parking by bow window	1
ease up on developments	2	no facilities for 13-16yr olds - club?	1	stop parking of cars outside school	1
Easier road crossing for Part-sighted & Disabled	1	no facilities for 13-16yrs - club?	1	stop parking on double yellow lines	1
elderly to undergo compulsory driving test!!	1	no football and cycling in cul de sac areas	1	stop parking outside PO	1
eliminate parking outside bow window	1	no further development	2	stop pavement blocking forcing pushchairs into roa	1
eliminate rowdyism and litter in public places	2	no further large scale development	1	stop speeding cars	1
empty premises could be charity shops	2	no high rise developments	1	stop speeding in elmer	1
empty recycling site more frequently	1	no housing development	2	stop summer beach parking past the PO	1
encourage adults and children to take their litter	1	no more building	4	stop summer beach parking past the PO	1
encourage more people to use local shops	2	no more building, roads take no more traffic	1	stop vandalism	2
encourage parents to control behaviour of teenager	1	no more buildings, houses, flats	1	stop vandalism and rowdy behaviour around shrubbs	1
encouraging return of a bakery and petrol station	1	no more businesses knocked down	1	stop vandalism and rowdy behaviour opn shrubbs	1
end winter parking restrictions	2	no more development	1	stop vandals	2
endeavour to reduce road traffic	1	no more estate agents	1	stop vandals and jobs	1
enforce dog fouling laws	2	no more estate agents, better range of shops	1	street lighting	4
enforce laws on dog fouling and litter	2	no more houses = no increase in traffic	1	street lighting to reduce vandalism	1
enforce planning applications (I.e. Manor Farm)	1	no more houses, flats	1	support local businesses	1
enforce planning applications(I.e. Manor Farm)	1	no more housing	1	support local shops	1
enforce speed limits	2	no more housing development	1	support the parish church community	1
enforce speed restrictions	1	no more housing developments	2	support/developlocal shopping facilities	1
enforce speed restrictions elmer sand to yapton rd	1	no more new housing	2	the police only react too late or not at all	1
ensure land east of wormswood and south A259	1	no new developments	3	tidy elmer shopping parade	1
ensure medical centres retained	2	no new houses	4	tidy up area of telephone exchange and chinese res	2
ensure protection of beach, open space, wildlife	2	no new roads into parish	1	tighter control over infill building	1
everything feels fine	1	no out of character developments	1	to communicate with youngsters	1
exhibitions, best village competition	2	No overbuilding	1	to feel safe walking in dark alone	1
facilities for 10-16 yr olds	1	no parking on double lines and verges	2	too late	1
fetes, fairs, bbq, competitions	1	noise at beer festival and all night on sept 21st.	1	to respect the community	2
fiat garage not to park in road	1	noisy car radios	1	to see occasional traffic warden activity	1
finer for litter dropping	1	not to build any more houses	1	toilets on beach	2
flood prevention	1	not too built up	1	tone down noise polution	1
foot path down sea lane	2	occasional police presence in late evening	1	too many estate agents	2
footpath merry end to shops	2	parades, community spirit	1	too much space lost to infill development	1
footpaths	1	parental control of children	1	traffic calming	3
footpaths cleared of weeds	2	parents to be more responsible for their children	1	traffic control - speed limits, parking enforcemen	2
forbid car sales in village - more space for park	1	parking on yellow lines	2	traffic control - speeding	1
free bus passes for oap and disabled	1	path around larksfield	2	traffic control- speeding	1
gangs culture	1	path around shrubbs field	2	traffic danger at comet corner	2
get parents to control children	1	path opposite is narrow and acute slope	2	traffic lights at comet corner	3
get rid of groups of youths outside convenience st	1	pavement church to village hall slippery when wet	1	traffic management	1
get rid of underage drinking in bus shelters	1	pavement on south side merry end to shops	1	travel by public transport cheaper	2
get rid of unsightly area around chinese takeaway	2	pavement shops to merry end.	1	trouble makers aware of bobby around	1
get Saturday surgeries reinstated at medical centr	1	pedestrian crossing fro the blind at One Stop	1	unite the MOS association with the less upmarket	1
give shrubbs field back to the people	1	pedestrian crossing one stop to doctors	1	untidy front gardens	1
good repair of pathways	2	permanent library	2	urgent attention to safety at comet corner	1
grass verges cut more regularly	1	persuade teenagers to respect environment	1	vandals outside onestop and on shrubbs at night	2
grass verges kept tidy	1	plant more hedges for birds	1	very good as is, no more development	1
greater variety of shops (not estate agents!)	1	plant more hedges for the birds	1	very satisfied as is, not more development	1
guve shrubbs field and surrounding area back	1	plant more trees	1	very satisfied but no more development	1
half council tax	1	plant more trtees, flowers, shrubs	1	village community	3
halt to development	1	plaque or statue to Caldicott with history	1	village hall in elmer	1
have a decent bakery	2	police play areas for teenage abuse	1	village pond	2
have a dog warden	2	police teenage abuse	1	walkway for wheelchairs on beach southdean to elme	1
heavy penalties for dog fouling	1	young people's meeting place	1	wardens to stop illegal parking in lanes	1
heavy penalties for litterbugs	1	youth club	1	we miss bakers and bank	1
heavy penalty for dog fouling	1	youths off the streets	1	we need a road from Elmer to A259	1
heavy penalty for litterbugs	1	policing at strategic times to control behaviour	4	welcome a wider range of shops	1
higher police presence	1	preserve middleton village	2	wheel chair/walkway southdean to elmer along beach	1
higher police presence	1	prevent roadways used as permanent parking areas	1	wheelie bins for rubbish	2
home delivery from takeaways	1	prevent youngsters loitering around shop/ bus shel	1	why not have a prom?	2
improve facades of elmer shops	1	prevention of youngsters loitering around shop	1	with miniature A%(running through it	1
improve acces to GP's	1	promenade elmer to clymping for bikes, pram walks	1	young peoples meeting place	1