



West Sussex COVID-19 Data Summary

This pack brings together information relating to COVID-19 in West Sussex.

West Sussex County Council Public Health Department monitors information on a daily basis and produce this summary pack as well as showing more detailed analysis on the following website: <https://wsx-c19-weekly-supplement.netlify.app>. Links are provided to the public data sources available and a summary of current sources is provided at the end of this pack.

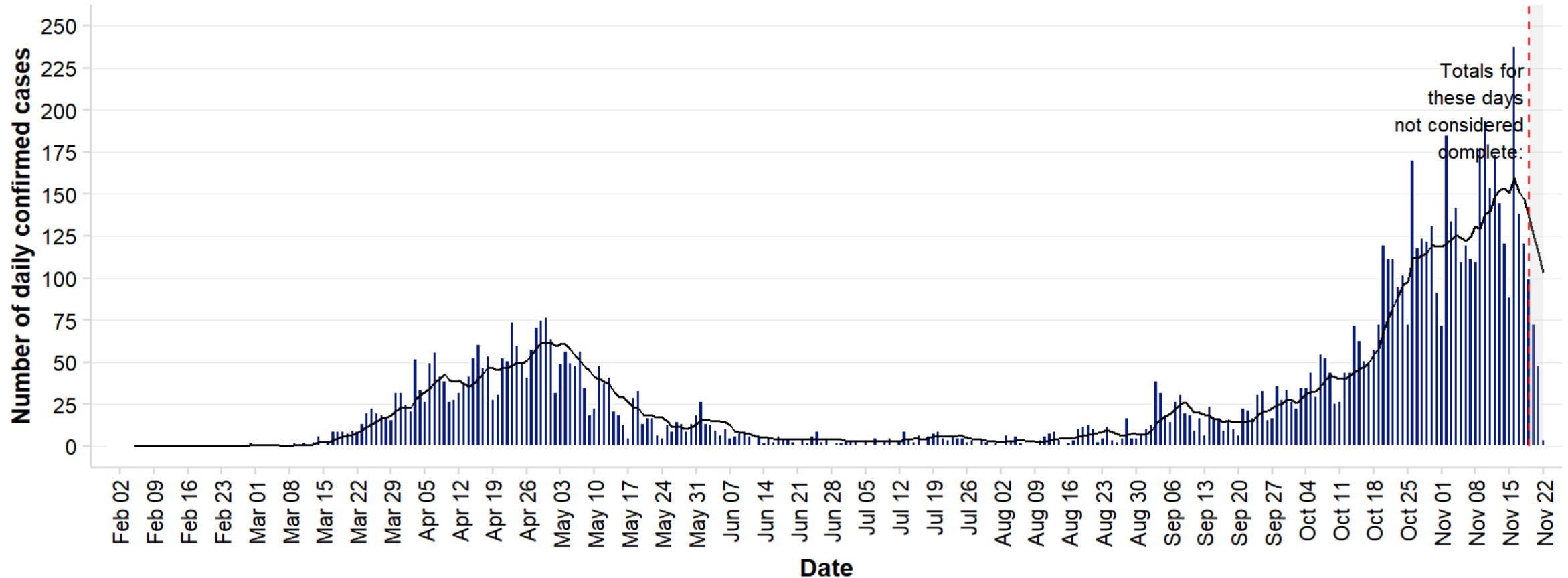
Local authorities have access to some information that is not in the public domain, this may be due to small numbers or data being provisional.

Contact

publichealth@westsussex.gov.uk

Daily number of confirmed Covid-19 cases; Pillar 1 and 2 combined; West Sussex

Confirmed cases by specimen date; as at 23 November 2020



The black line represents the average number of new cases confirmed in the previous seven days.

Source: <https://coronavirus.data.gov.uk/>

Pillar 1 includes NHS testing, such as tests of people being admitted to hospital or being discharged to a health/care home setting, pre-operative testing etc.

Pillar 2 is wider community testing

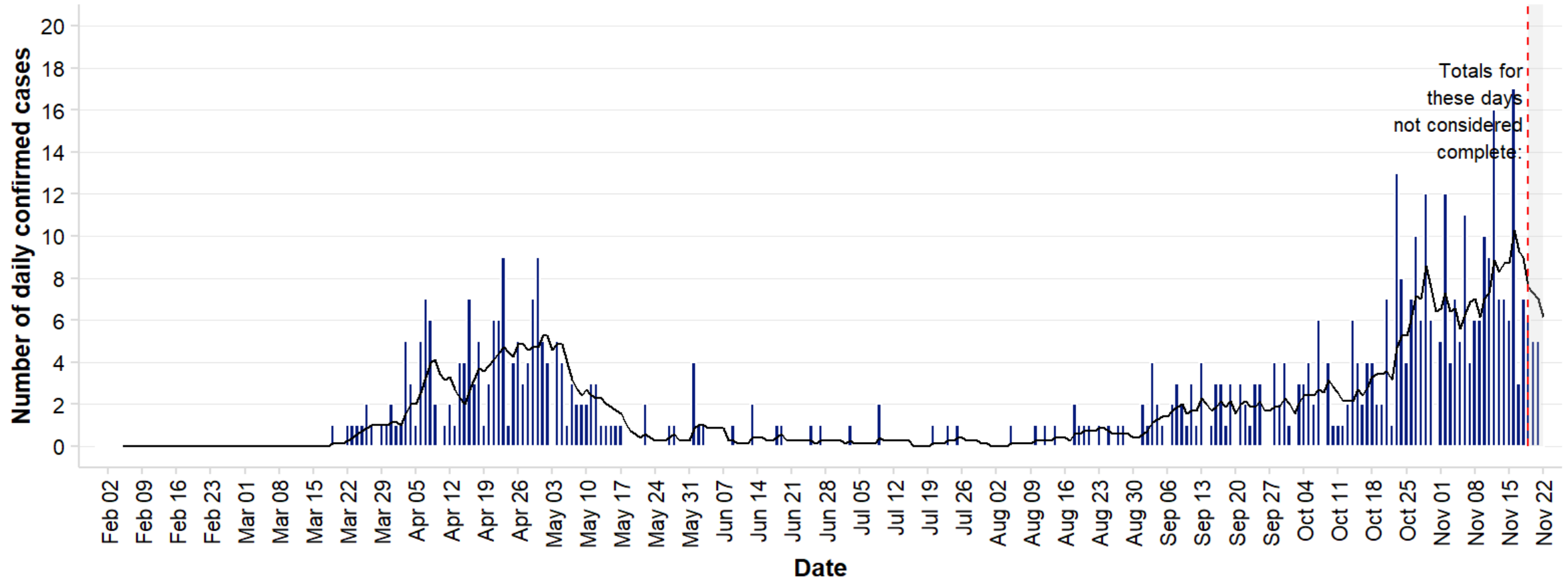
The most recent cases may not be complete due to a time lag in reporting

Pack date: 24 November 2020

Slide 2

Daily number of confirmed Covid-19 cases; Pillar 1 and 2 combined; Adur

Confirmed cases by specimen date; as at 23 November 2020



The black line represents the average number of new cases confirmed in the previous seven days.

Source: <https://coronavirus.data.gov.uk/>

Pillar 1 includes NHS testing, such as tests of people being admitted to hospital or being discharged to a health/care home setting, pre-operative testing etc.

Pillar 2 is wider community testing

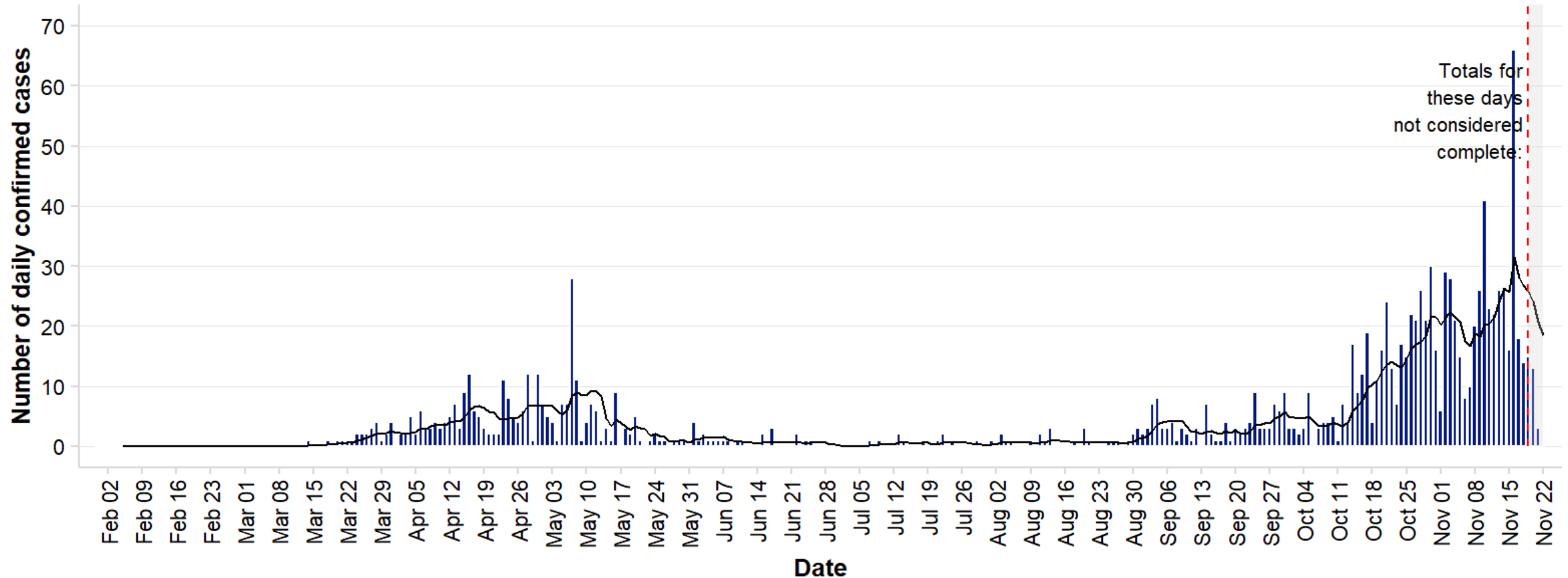
The most recent cases may not be complete due to a time lag in reporting

Pack date: 24 November 2020

Slide 3

Daily number of confirmed Covid-19 cases; Pillar 1 and 2 combined; Arun

Confirmed cases by specimen date; as at 23 November 2020



The black line represents the average number of new cases confirmed in the previous seven days.

Source: <https://coronavirus.data.gov.uk/>

Pillar 1 includes NHS testing, such as tests of people being admitted to hospital or being discharged to a health/care home setting, pre-operative testing etc.

Pillar 2 is wider community testing

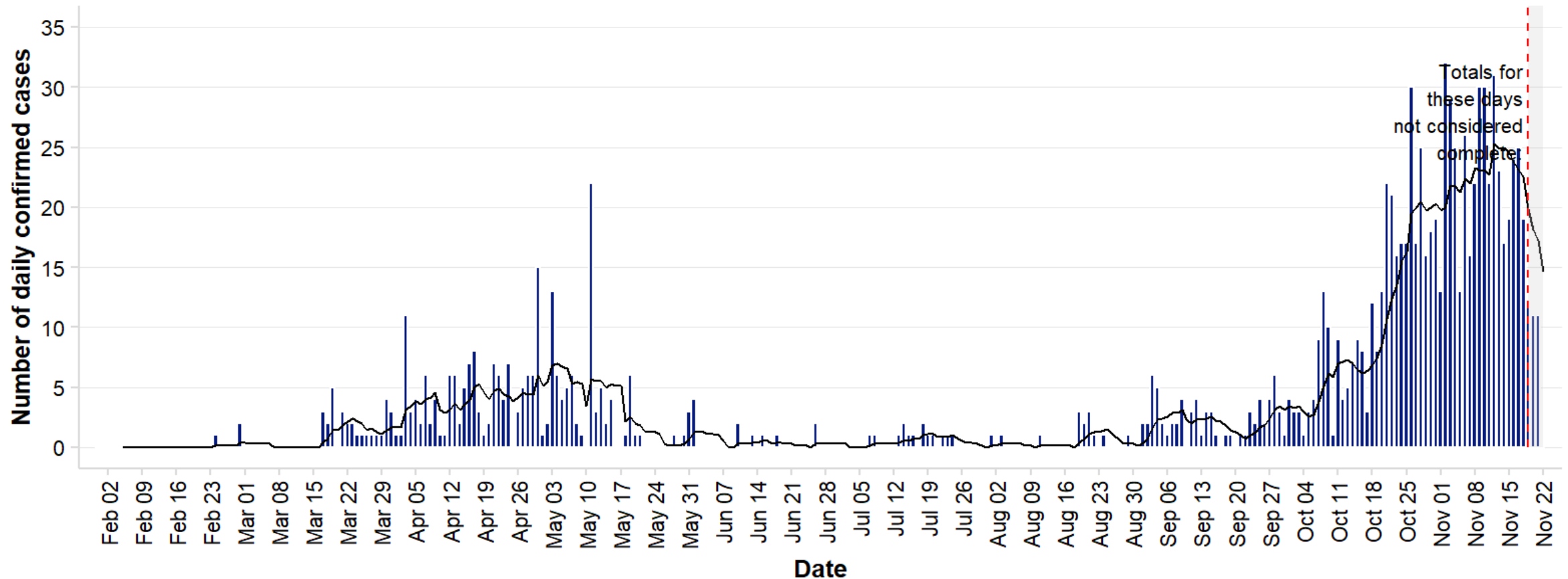
The most recent cases may not be complete due to a time lag in reporting

Pack date: 24 November 2020

Slide 4

Daily number of confirmed Covid-19 cases; Pillar 1 and 2 combined; Chichester

Confirmed cases by specimen date; as at 23 November 2020



The black line represents the average number of new cases confirmed in the previous seven days.

Source: <https://coronavirus.data.gov.uk/>

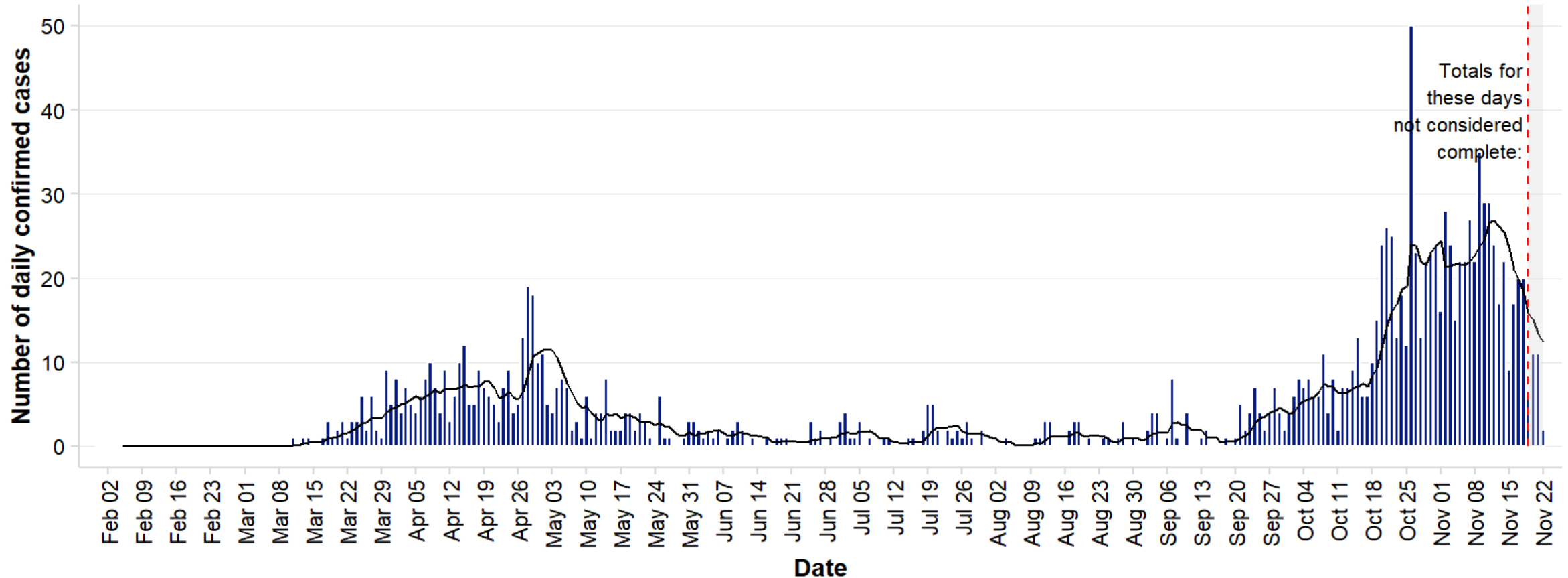
Pillar 1 includes NHS testing, such as tests of people being admitted to hospital or being discharged to a health/care home setting, pre-operative testing etc.
Pillar 2 is wider community testing
 The most recent cases may not be complete due to a time lag in reporting

Pack date: 24 November 2020

Slide 5

Daily number of confirmed Covid-19 cases; Pillar 1 and 2 combined; Crawley

Confirmed cases by specimen date; as at 23 November 2020



The black line represents the average number of new cases confirmed in the previous seven days.

Source: <https://coronavirus.data.gov.uk/>

Pillar 1 includes NHS testing, such as tests of people being admitted to hospital or being discharged to a health/care home setting, pre-operative testing etc.

Pillar 2 is wider community testing

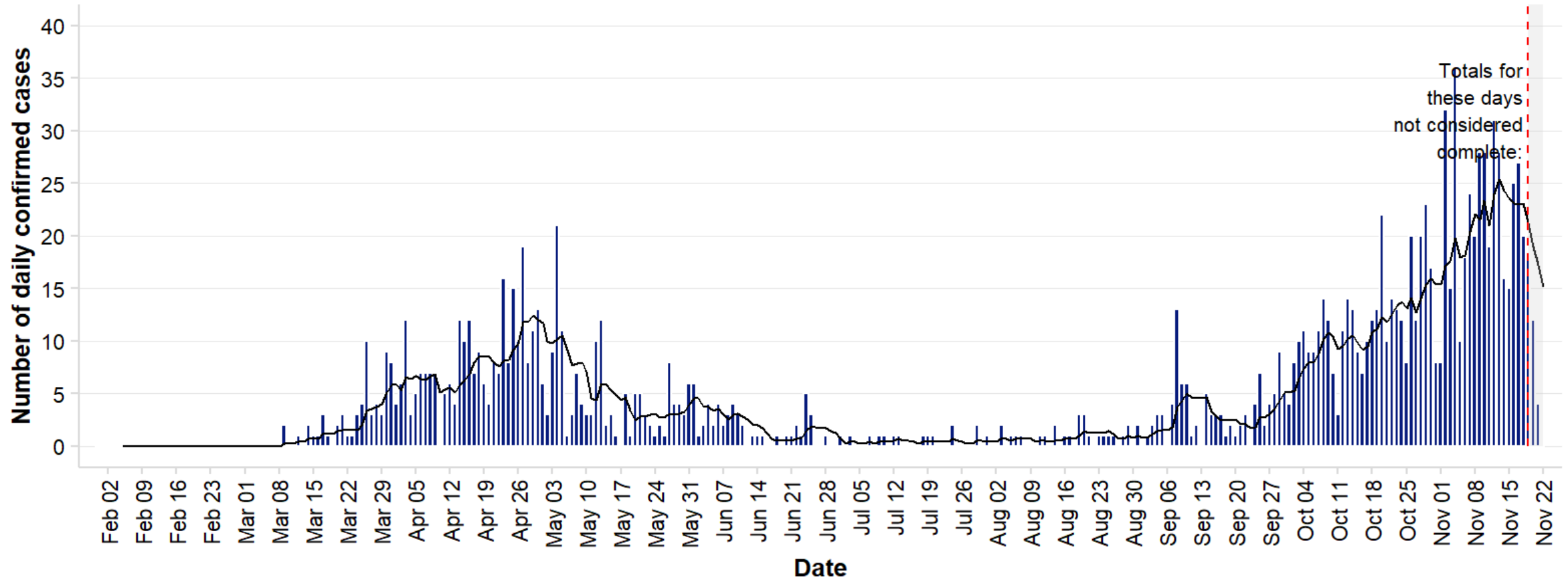
The most recent cases may not be complete due to a time lag in reporting

Pack date: 24 November 2020

Slide 6

Daily number of confirmed Covid-19 cases; Pillar 1 and 2 combined; Horsham

Confirmed cases by specimen date; as at 23 November 2020



The black line represents the average number of new cases confirmed in the previous seven days.

Source: <https://coronavirus.data.gov.uk/>

Pillar 1 includes NHS testing, such as tests of people being admitted to hospital or being discharged to a health/care home setting, pre-operative testing etc.

Pillar 2 is wider community testing

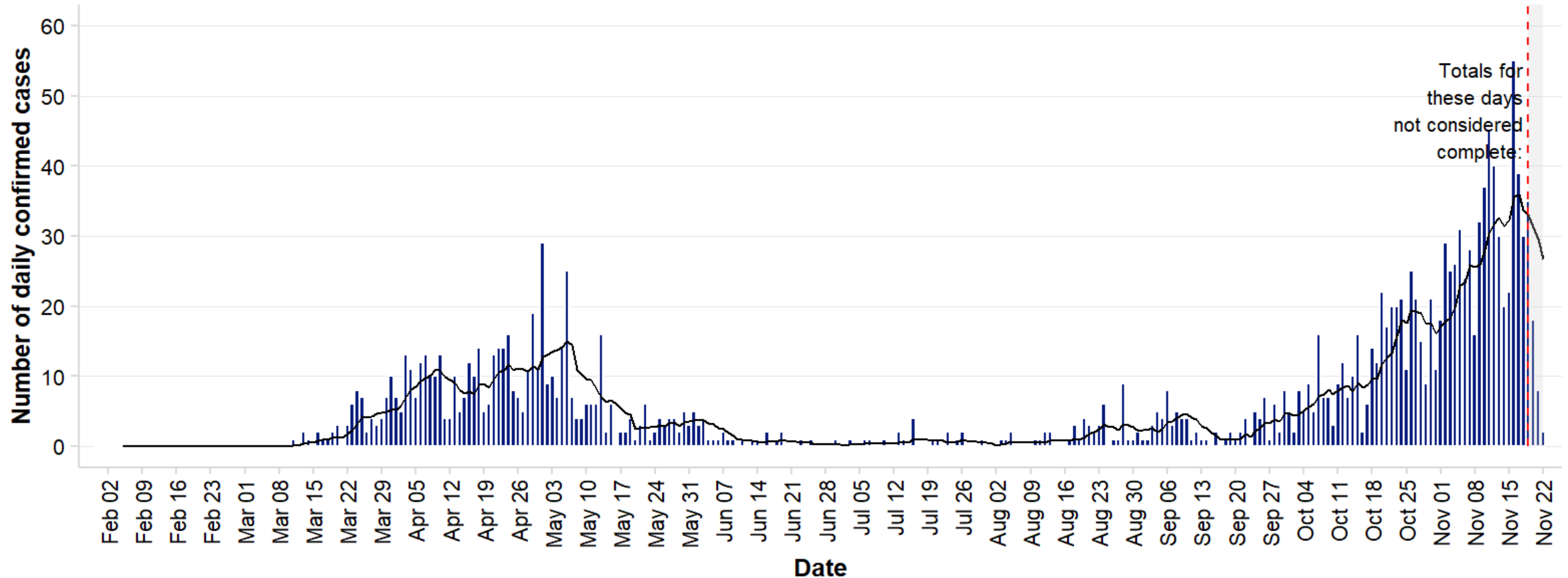
The most recent cases may not be complete due to a time lag in reporting

Pack date: 24 November 2020

Slide 7

Daily number of confirmed Covid-19 cases; Pillar 1 and 2 combined; Mid Sussex

Confirmed cases by specimen date; as at 23 November 2020



The black line represents the average number of new cases confirmed in the previous seven days.

Source: <https://coronavirus.data.gov.uk/>

Pillar 1 includes NHS testing, such as tests of people being admitted to hospital or being discharged to a health/care home setting, pre-operative testing etc.

Pillar 2 is wider community testing

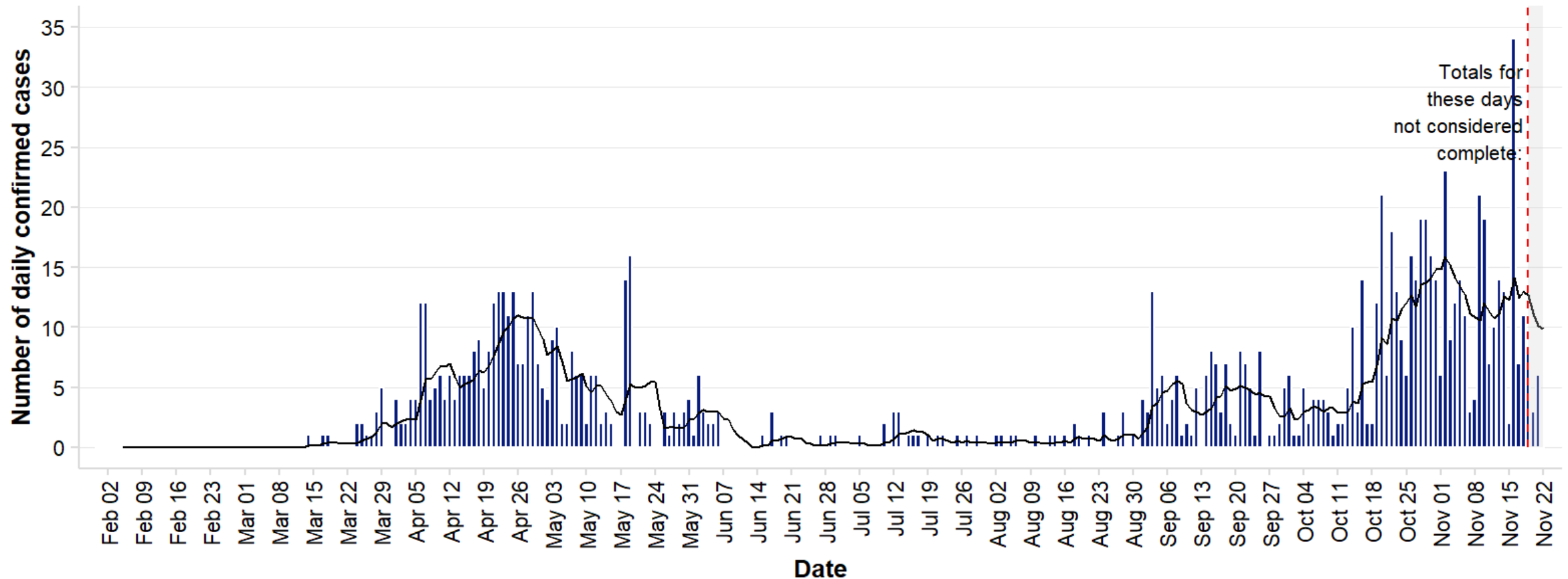
The most recent cases may not be complete due to a time lag in reporting

Pack date: 24 November 2020

Slide 8

Daily number of confirmed Covid-19 cases; Pillar 1 and 2 combined; Worthing

Confirmed cases by specimen date; as at 23 November 2020



The black line represents the average number of new cases confirmed in the previous seven days.

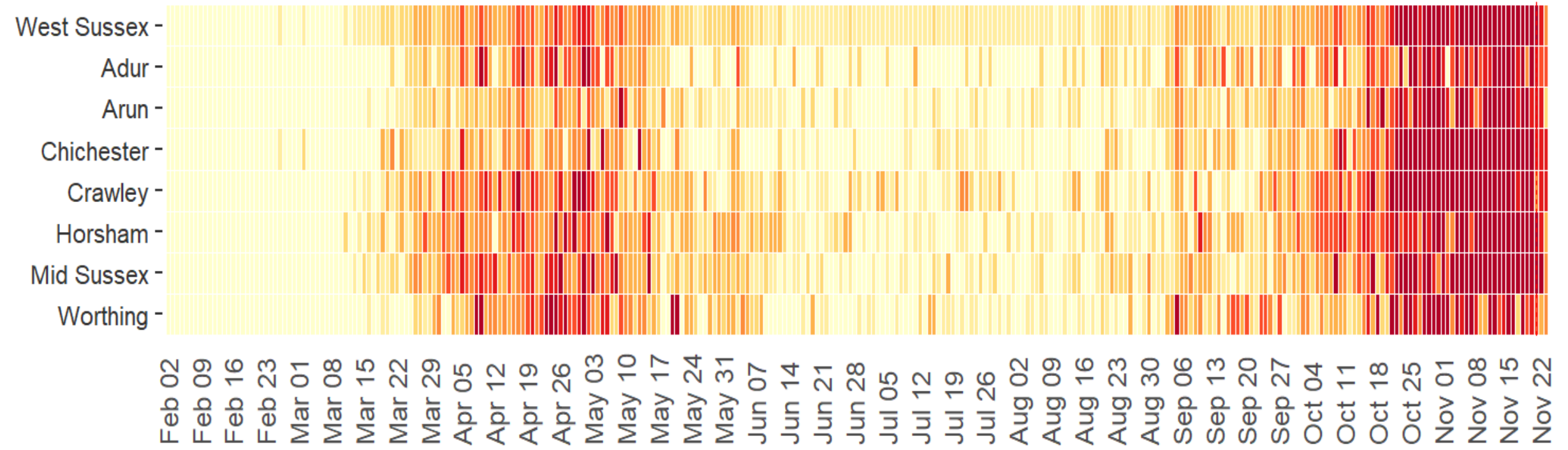
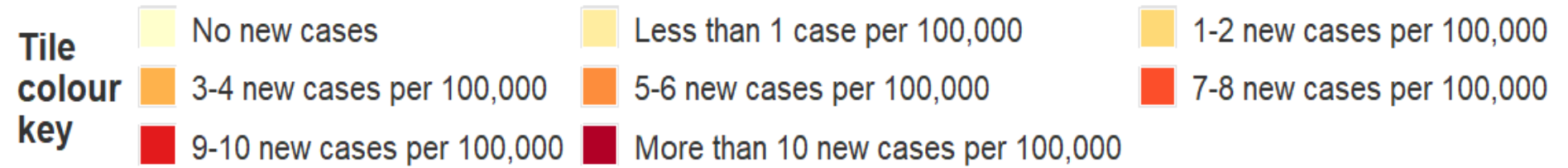
Source: <https://coronavirus.data.gov.uk/>

Pillar 1 includes NHS testing, such as tests of people being admitted to hospital or being discharged to a health/care home setting, pre-operative testing etc.
Pillar 2 is wider community testing
 The most recent cases may not be complete due to a time lag in reporting

Pack date: 24 November 2020

Slide 9

Summary of new confirmed Covid-19 cases per 100,000 population (all ages); as at 23 November



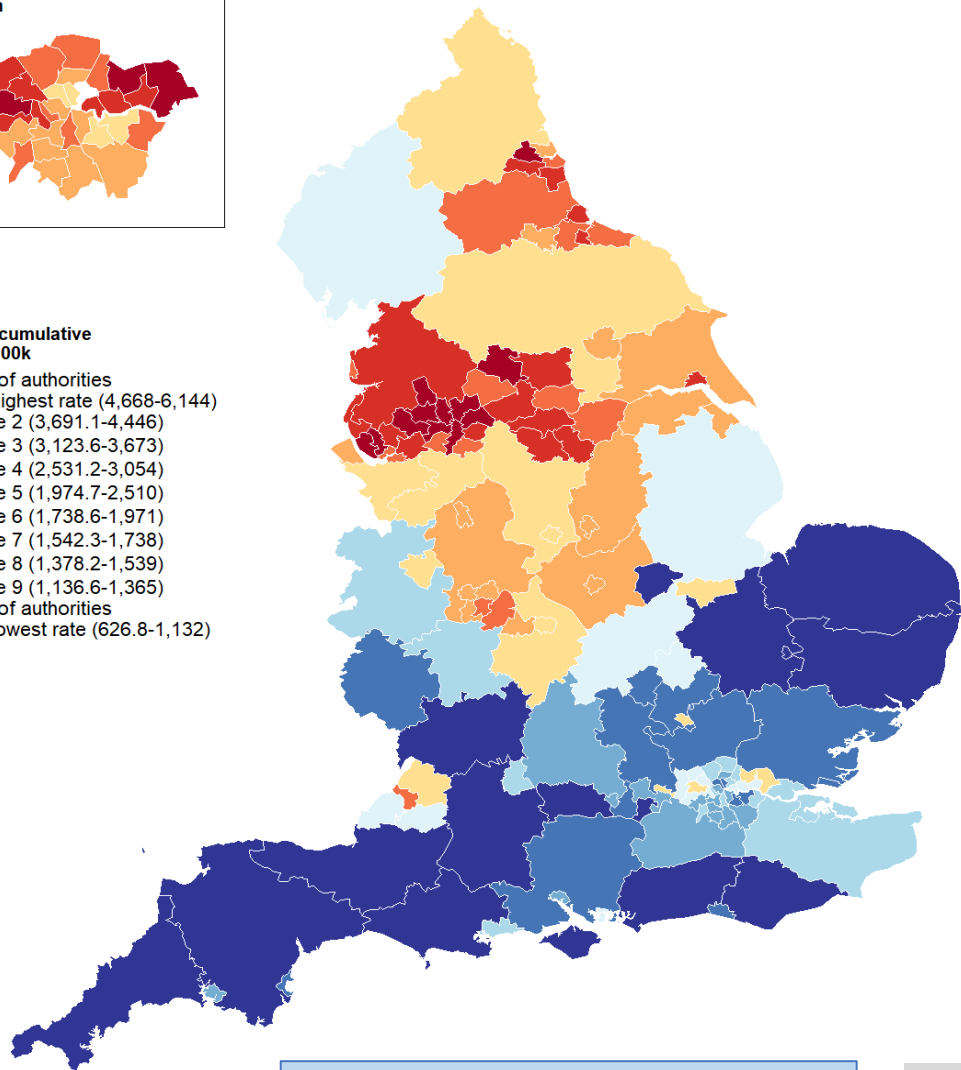
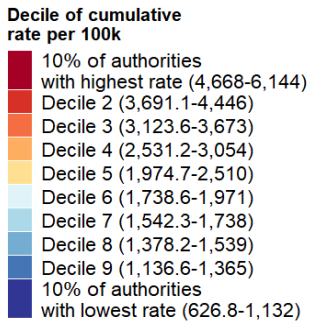
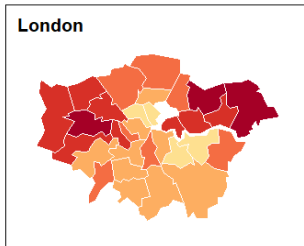
Cases for dates after the red dashed line are not considered complete due to a lag in test result reporting.

Upper Tier Local Authority cumulative cases as at 23 November

Name	Cumulative cases	Cumulative rate per 100,000 residents	Local Authority Rank (out of 149) where 1 = Highest Rate per 100,000	Decile of cumulative rate per 100,000
West Sussex	8,589	994.1	141st	10% of authorities with lowest rate
England	1,314,888	2,336.0	-	-
South East region	121,930	1,328.2	-	-

Cumulative rate of confirmed Covid-19 cases per 100,000 population (all ages); Pillar 1 and 2 combined; Upper Tier Local and Unitary Authorities

Confirmed cases by specimen date; as at 23 November 2020



What is a decile?

Every area in England is ranked from highest to lowest rate of confirmed COVID-19 cases per 100,000 population and then areas are divided 10 groups each representing 10% of the areas in England.

West Sussex is in the lowest 10% of local authorities.

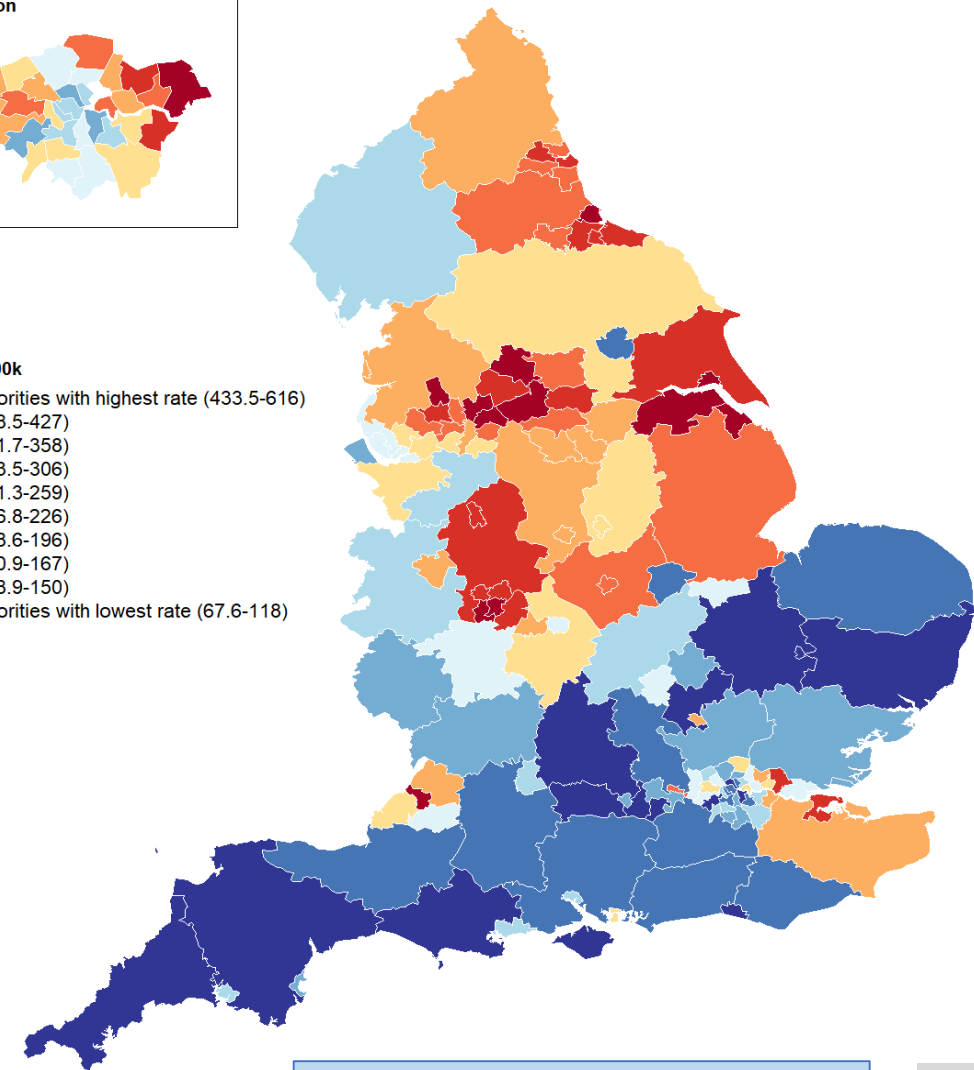
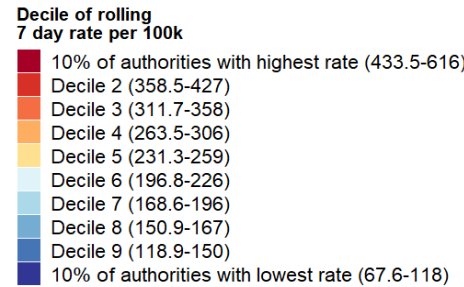
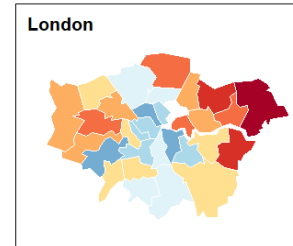
Source: <https://coronavirus.data.gov.uk/>

Upper Tier Local Authority rolling 7 day cases as at 23 November

Name	Rolling 7-day new cases	Rolling 7-day case rate per 100,000	Local Authority Rank (out of 149) where 1 = Highest Rolling 7-day rate per 100,000	Decile of rolling rate per 100,000
West Sussex	1,027	118.9	134th	Decile 9
England	135,474	240.7	-	-
South East region	16,284	177.4	-	-

Rolling 7 day rate of confirmed Covid-19 cases per 100,000 population (all ages); Pillar 1 and 2 combined; Upper Tier Local and Unitary Authorities

Confirmed cases in the seven days to 18 November; as at 23 November 2020



What is a decile?

Every area in England is ranked from highest to lowest rate of confirmed COVID-19 cases per 100,000 population and then areas are divided 10 groups each representing 10% of the areas in England.

Note that the very recent days are excluded in the 7-day total as these are thought to be incomplete. As such, this data represents cases in the seven days to 18 November

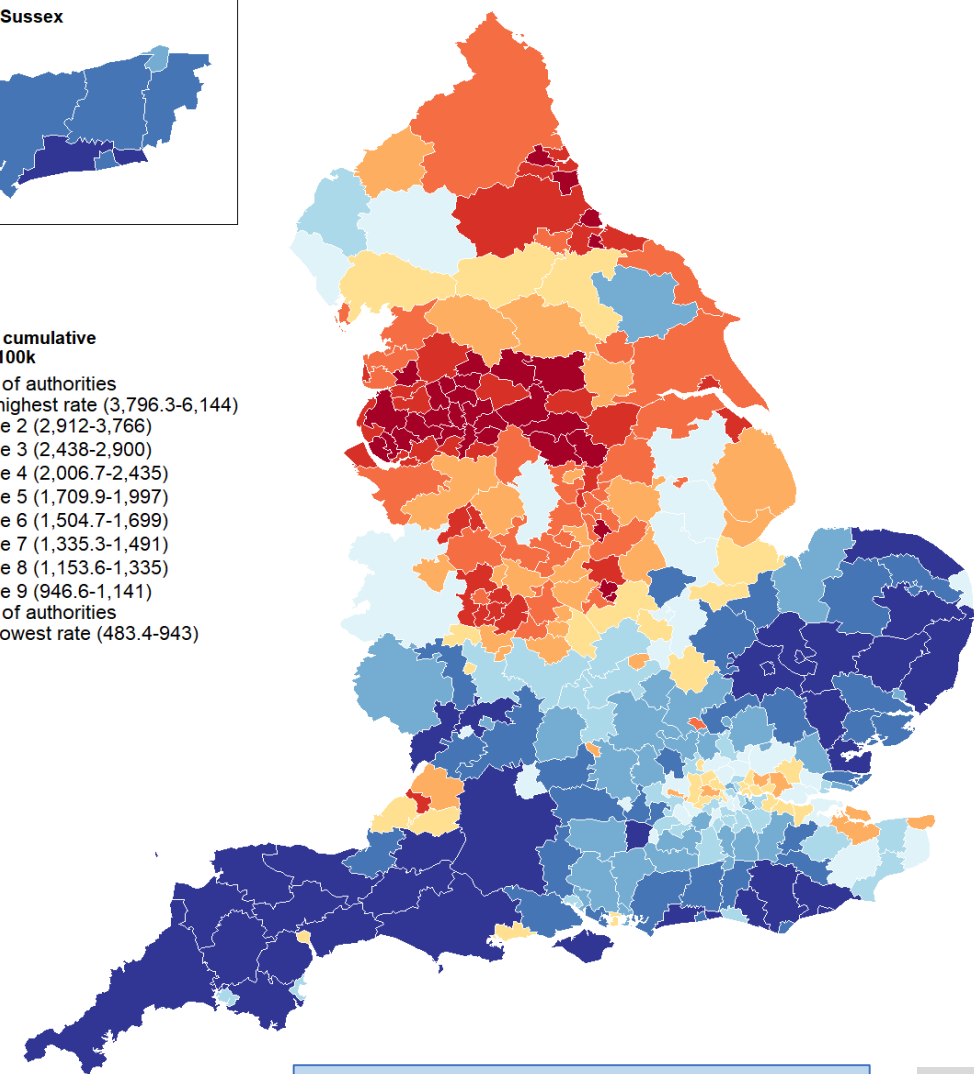
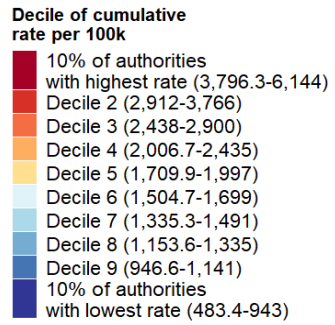
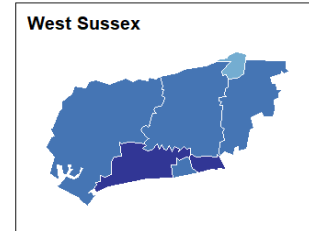
Source: <https://coronavirus.data.gov.uk/>

Lower Tier Local Authority cumulative cases as at 23 November

Name	Cumulative cases	Cumulative rate per 100,000 residents	Local Authority Rank (out of 315) where 1 = Highest Rate per 100,000	Decile of cumulative rate per 100,000
Adur	546	849.1	294th	10% of authorities with lowest rate
Arun	1,258	782.5	299th	10% of authorities with lowest rate
Chichester	1,164	961.0	281st	Decile 9
Crawley	1,399	1,244.6	233rd	Decile 8
Horsham	1,452	1,009.8	276th	Decile 9
Mid Sussex	1,723	1,140.9	253rd	Decile 9
Worthing	1,047	946.9	282nd	Decile 9
West Sussex	8,589	994.1	-	-
South East region	121,930	1,328.2	-	-
England	1,314,888	2,336.0	-	-

Cumulative rate of confirmed Covid-19 cases per 100,000 population (all ages); Pillar 1 and 2 combined; Lower Tier Local and Unitary Authorities

Confirmed cases by specimen date; as at 23 November 2020



What is a decile?

Every area in England is ranked from highest to lowest rate of confirmed COVID-19 cases per 100,000 population and then areas are divided 10 groups each representing 10% of the areas in England.

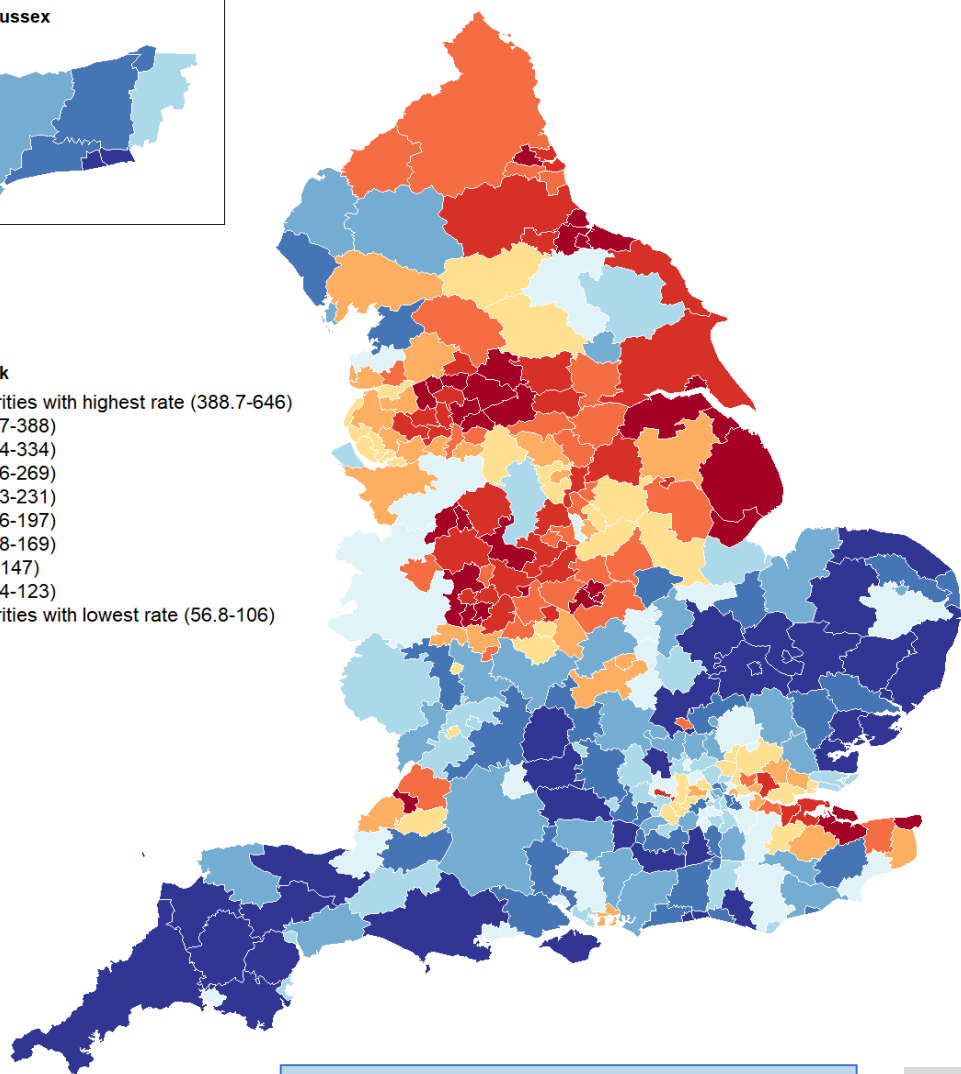
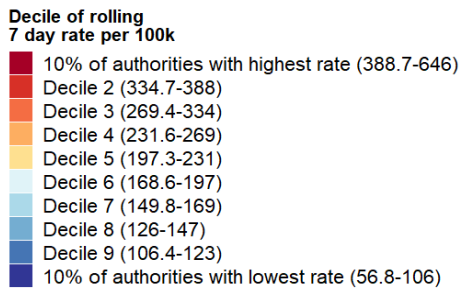
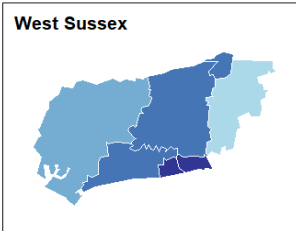
Source: <https://coronavirus.data.gov.uk/>

Lower Tier Local Authority rolling cases as at 23 November

Name	Rolling 7-day new cases	Rolling 7-day case rate per 100,000	Local Authority Rank (out of 315) where 1 = Highest Rolling 7-day rate per 100,000	Decile of rolling rate per 100,000
Adur	63	98.0	291st	10% of authorities with lowest rate
Arun	188	116.9	261st	Decile 9
Chichester	158	130.4	246th	Decile 8
Crawley	129	114.8	264th	Decile 9
Horsham	162	112.7	271st	Decile 9
Mid Sussex	236	156.3	208th	Decile 7
Worthing	91	82.3	301st	10% of authorities with lowest rate
West Sussex	1,027	118.9	-	-
England	135,474	240.7	-	-
South East region	16,284	177.4	-	-

Rolling 7 day rate of confirmed Covid-19 cases per 100,000 population (all ages); Pillar 1 and 2 combined; Lower Tier Local and Unitary Authorities

Confirmed cases in the seven days to 18 November; as at 23 November 2020



What is a decile?

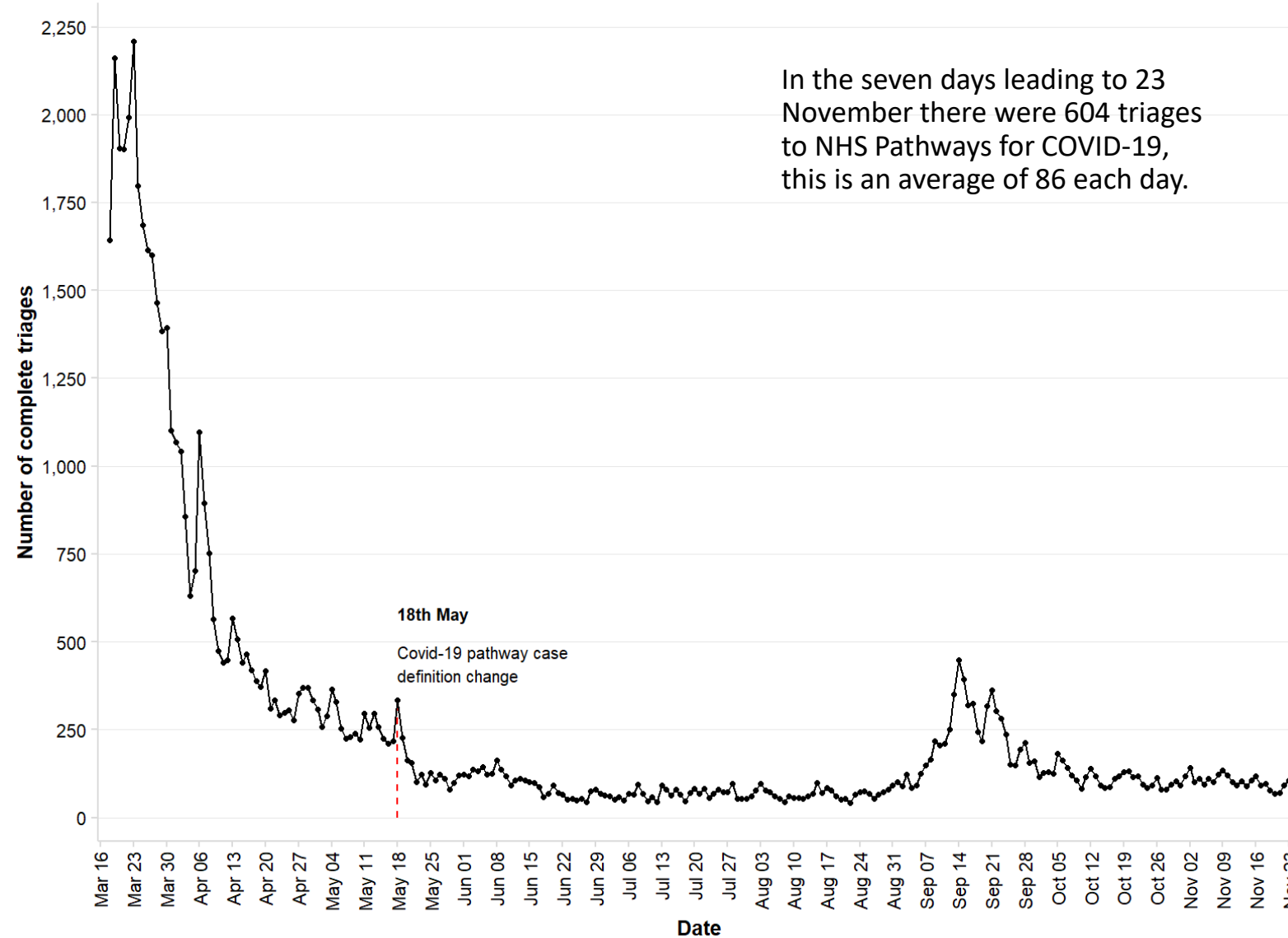
Every area in England is ranked from highest to lowest rate of confirmed COVID-19 cases per 100,000 population and then areas are divided 10 groups each representing 10% of the areas in England.

Note that the very recent days are excluded in the 7-day total as these are thought to be incomplete. As such, this data represents cases in the seven days to 18 November

Source: <https://coronavirus.data.gov.uk/>

Total number of complete triages to NHS Pathways for Covid-19; NHS West Sussex CCG

Triages via 111 online, 111 phone calls and 999 calls; 18 March - 23 November



Note: red dashed line = some patients excluded, blue dashed line = additional patients added

In the last 24 hours there were 105 triages made. This is an increase of 13 triages compared to the previous day (92 triages).

- This data is based on potential COVID-19 symptoms reported by members of the public to NHS Pathways through NHS 111 or 999 and 111 online.
- It provides a view of service contacts and an early view of people concerned about their symptoms. It is not based on any outcomes of tests for COVID-19.
- This is also not a count of people as a user can repeat the triage process several times.
- In 111 online, any user that starts the COVID-19 assessment service is indicating that they may have symptoms of coronavirus.

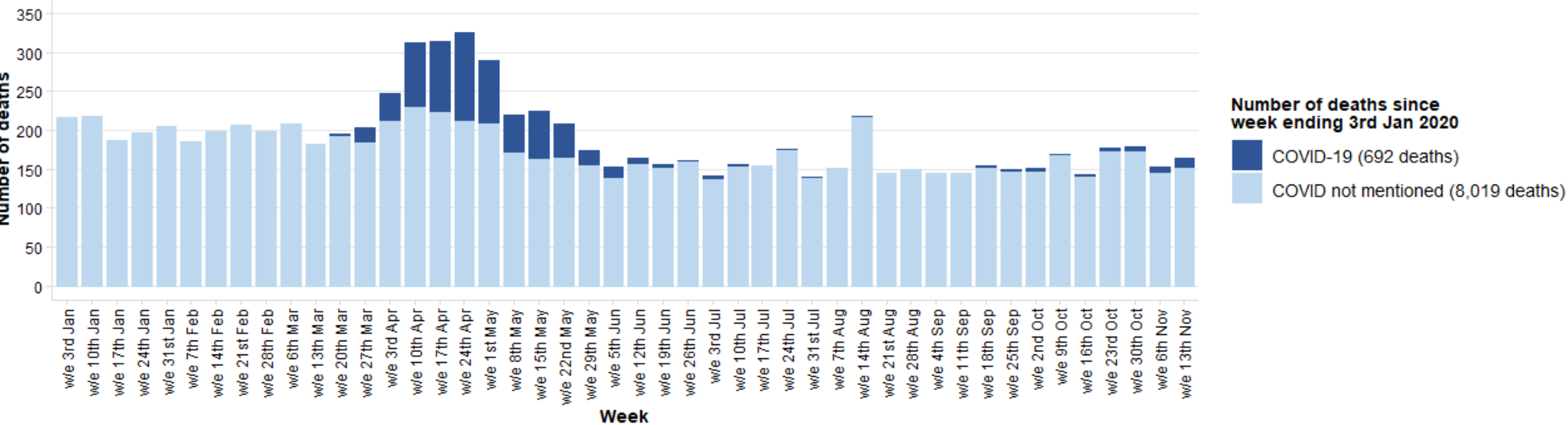
Source: NHS Digital

West Sussex Local Outbreak Control Plan – Deaths

Pack date: 24 November 2020

Weekly deaths; West Sussex; w/e 3rd Jan 2020 - w/e 13th Nov

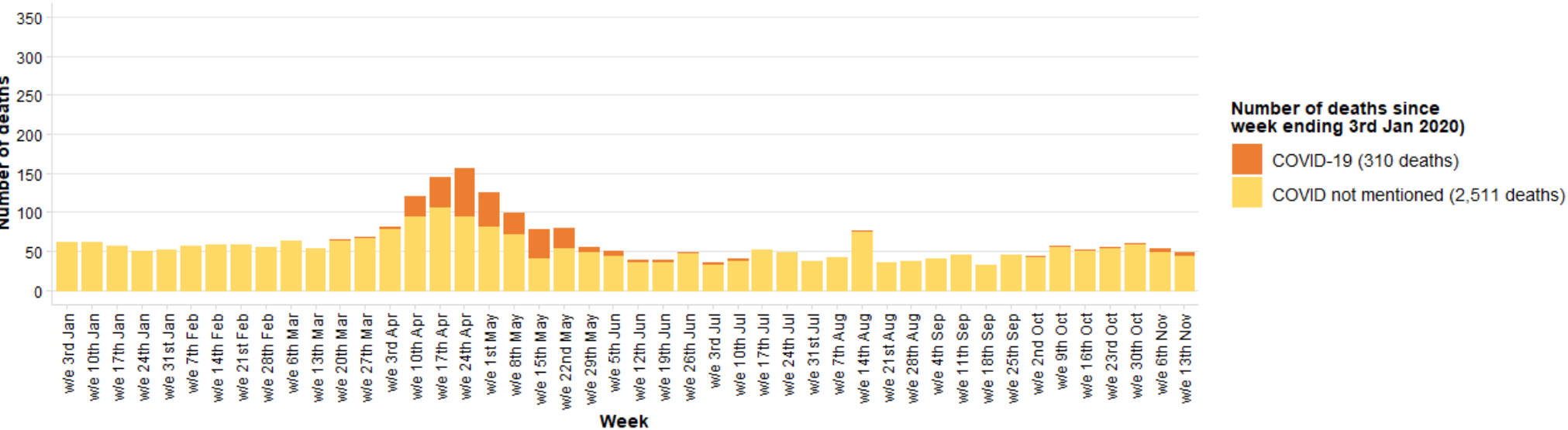
By week of occurrence and by Covid-19 mentioned on death certificate (deaths registered by 21 November 2020)



Source: Office for National Statistics

Weekly deaths in care homes; West Sussex; w/e 3rd Jan 2020 - w/e 13th Nov

By week of occurrence and by Covid-19 mentioned on death certificate (deaths registered by 21 November 2020)



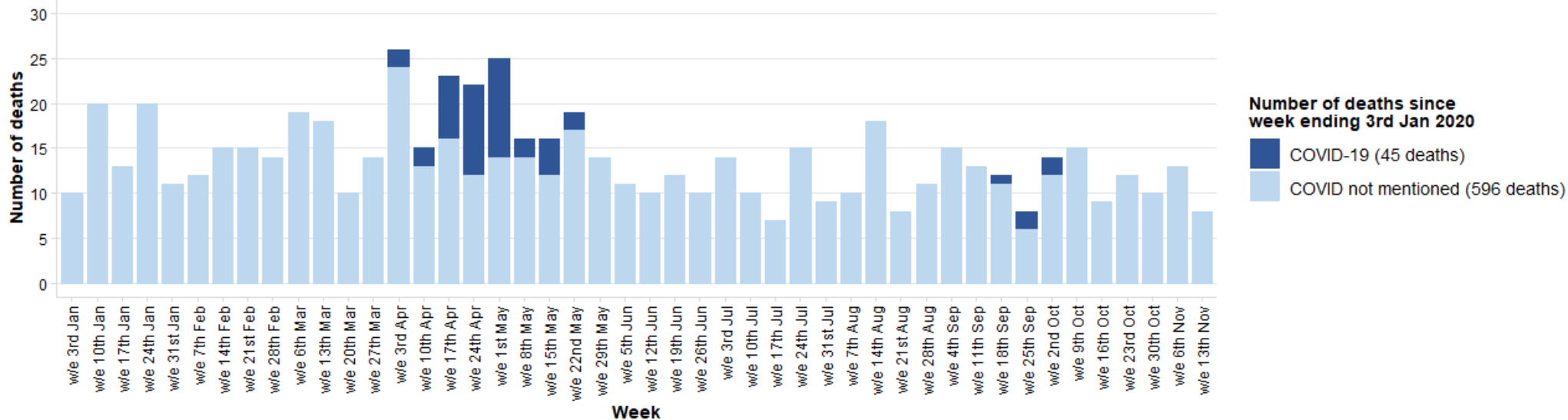
West Sussex Local Outbreak Control Plan – Deaths

Pack date: 24
November 2020

Source: Office for
National Statistics

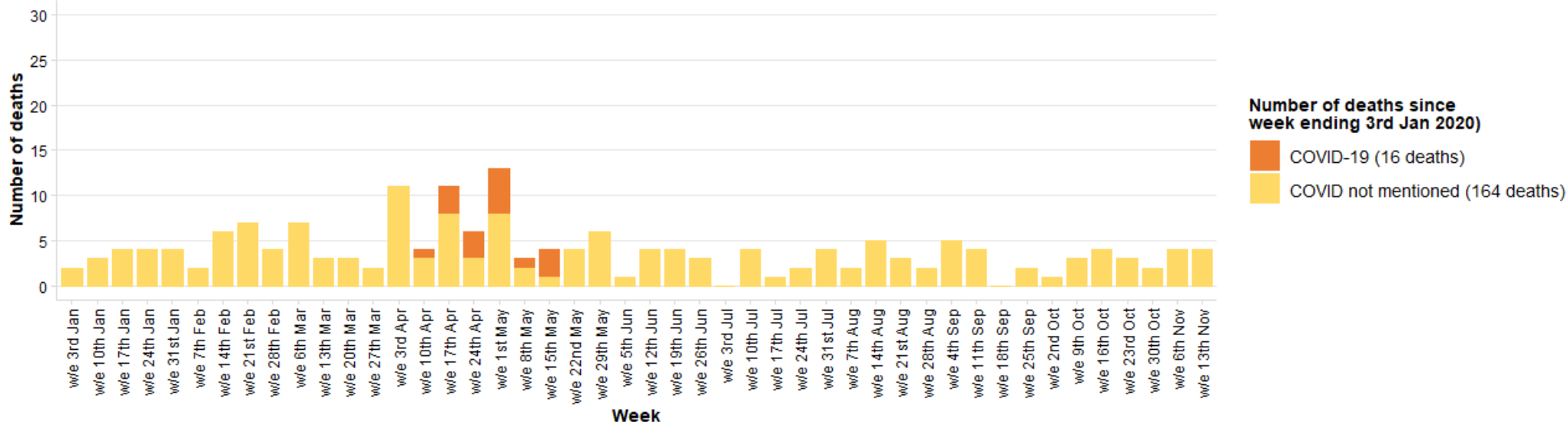
Weekly deaths; Adur; w/e 3rd Jan 2020 - w/e 13th Nov

By week of occurrence and by Covid-19 mentioned on death certificate (deaths registered by 21 November 2020)



Weekly deaths in care homes; Adur; w/e 3rd Jan 2020 - w/e 13th Nov

By week of occurrence and by Covid-19 mentioned on death certificate (deaths registered by 21 November 2020)

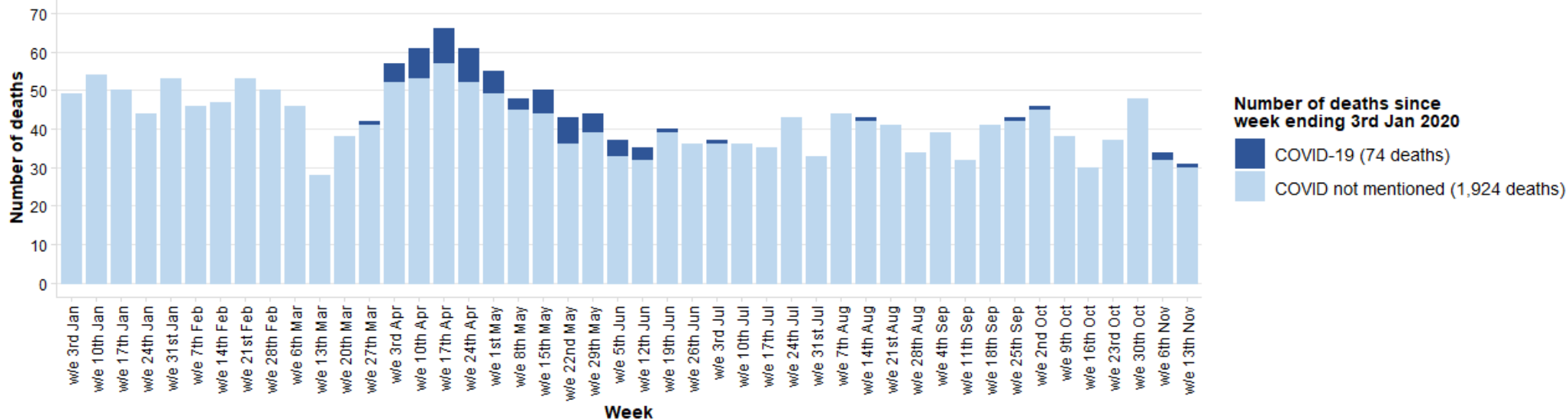


West Sussex Local Outbreak Control Plan – Deaths

Pack date: 24
November 2020

Weekly deaths; Arun; w/e 3rd Jan 2020 - w/e 13th Nov

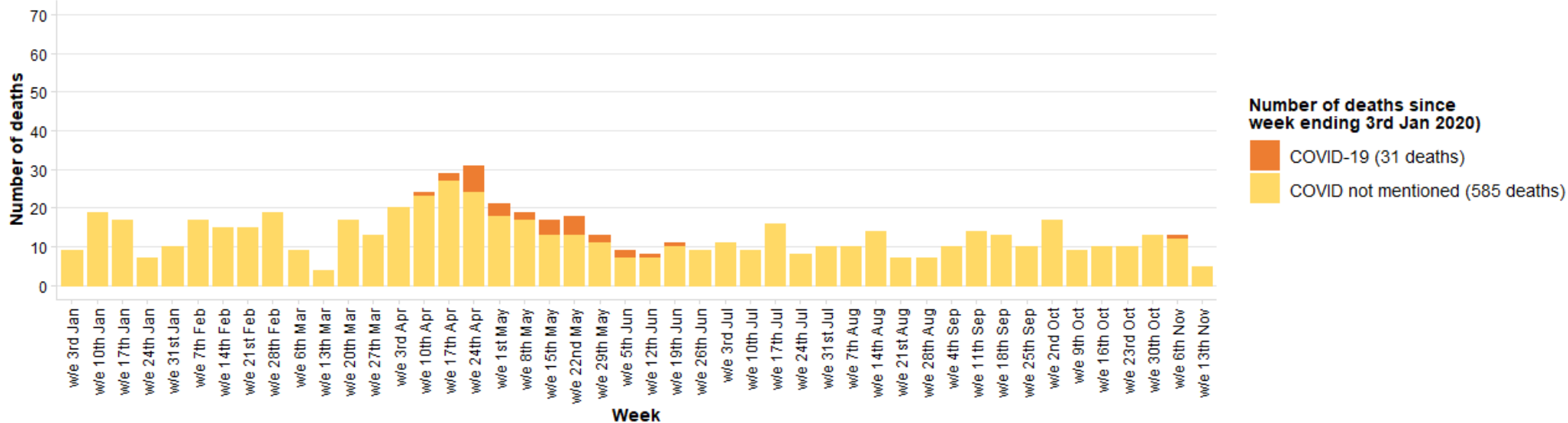
By week of occurrence and by Covid-19 mentioned on death certificate (deaths registered by 21 November 2020)



Source: Office for National Statistics

Weekly deaths in care homes; Arun; w/e 3rd Jan 2020 - w/e 13th Nov

By week of occurrence and by Covid-19 mentioned on death certificate (deaths registered by 21 November 2020)



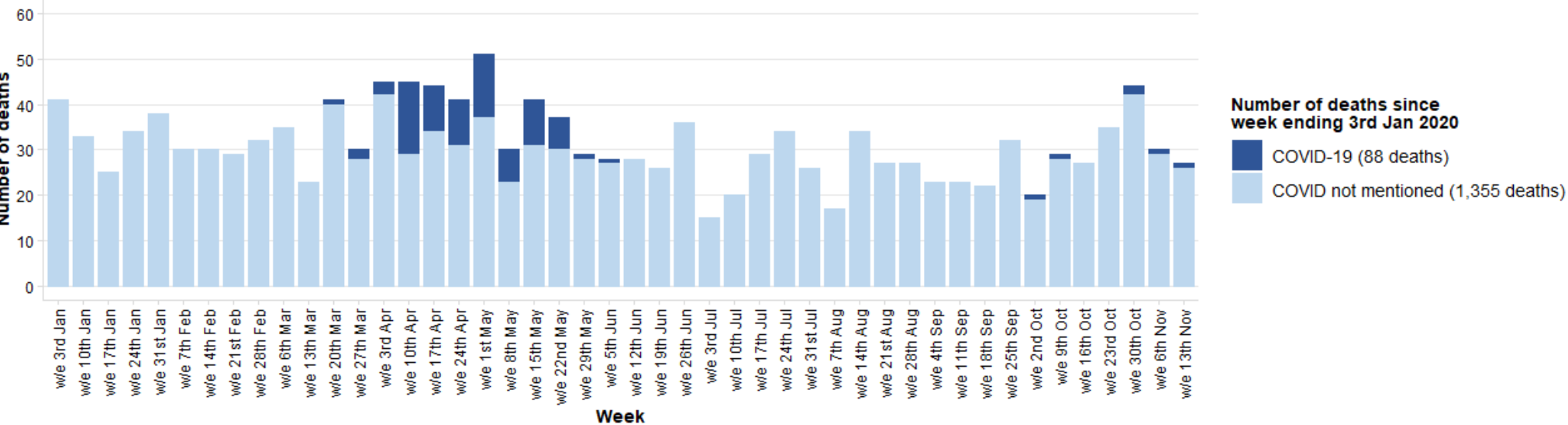
West Sussex Local Outbreak Control Plan – Deaths

Pack date: 24
November 2020

Source: Office for
National Statistics

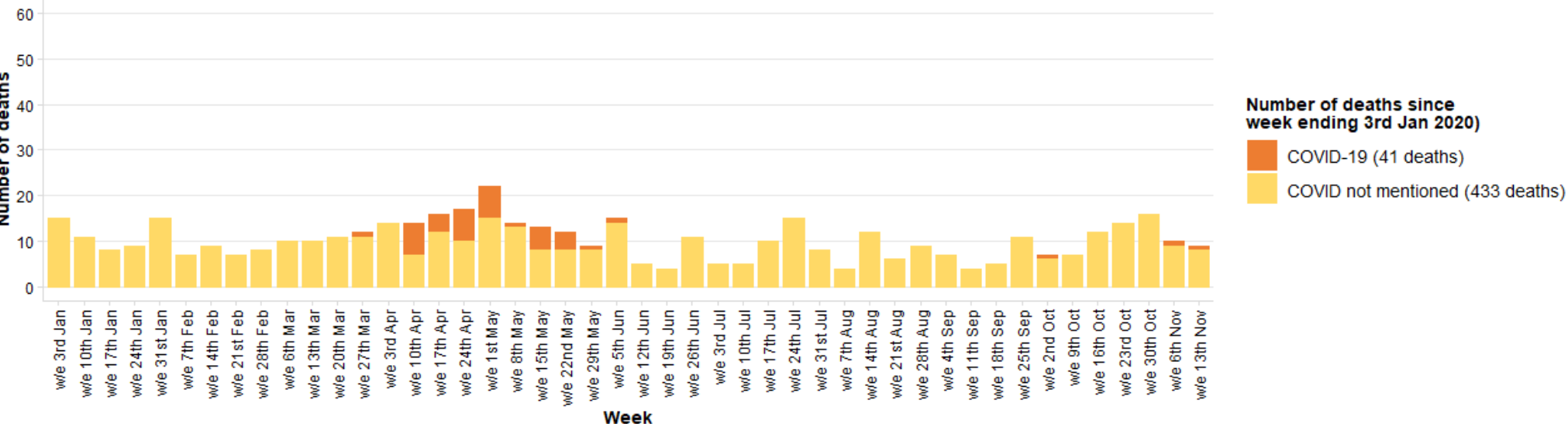
Weekly deaths; Chichester; w/e 3rd Jan 2020 - w/e 13th Nov

By week of occurrence and by Covid-19 mentioned on death certificate (deaths registered by 21 November 2020)



Weekly deaths in care homes; Chichester; w/e 3rd Jan 2020 - w/e 13th Nov

By week of occurrence and by Covid-19 mentioned on death certificate (deaths registered by 21 November 2020)



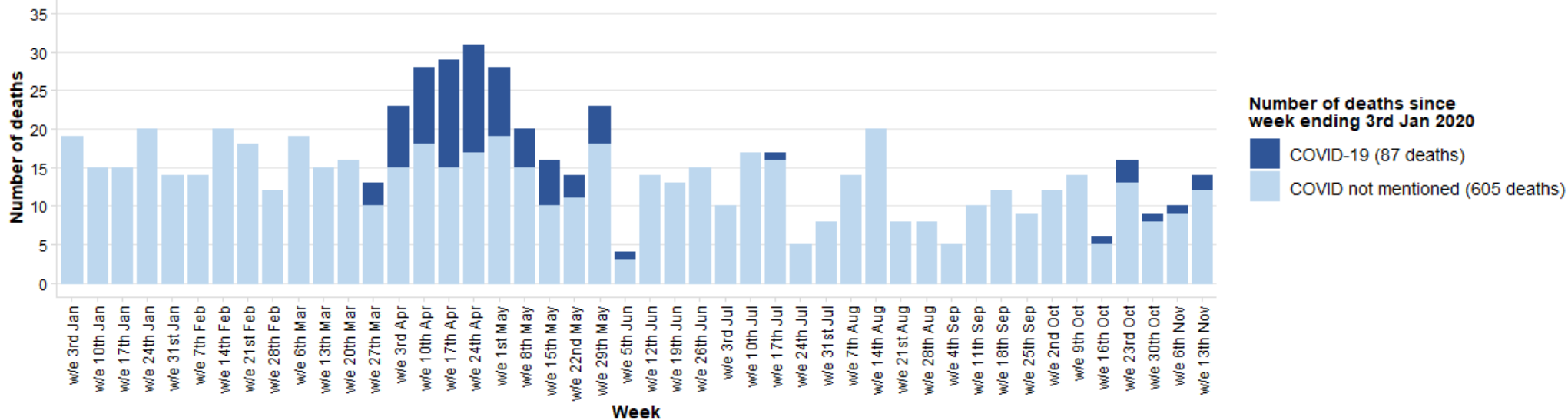
West Sussex Local Outbreak Control Plan – Deaths

Pack date: 24
November 2020

Source: Office for
National Statistics

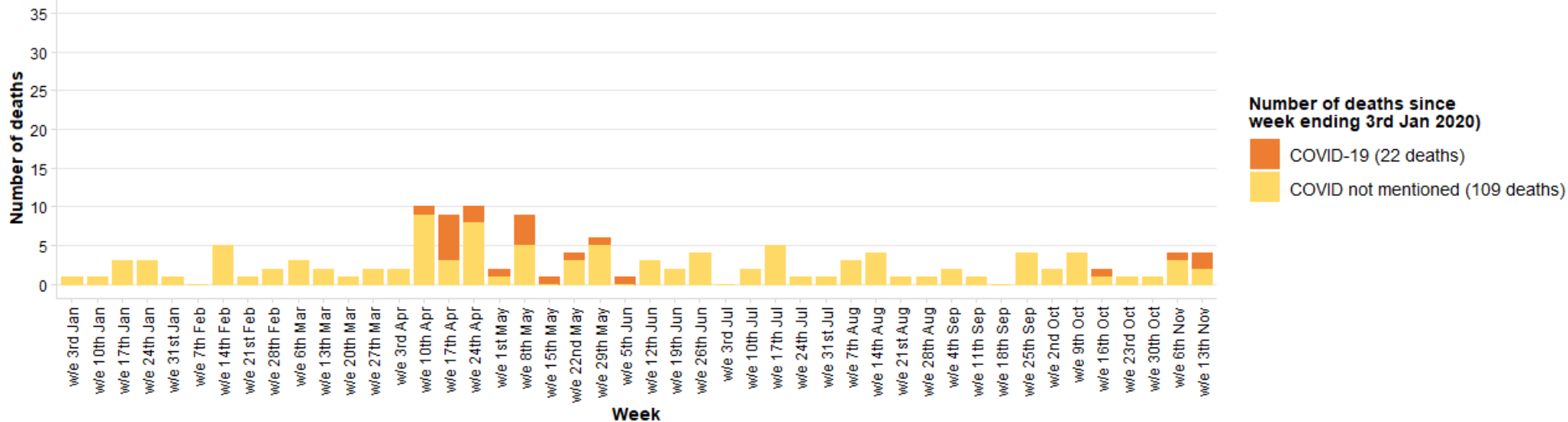
Weekly deaths; Crawley; w/e 3rd Jan 2020 - w/e 13th Nov

By week of occurrence and by Covid-19 mentioned on death certificate (deaths registered by 21 November 2020)



Weekly deaths in care homes; Crawley; w/e 3rd Jan 2020 - w/e 13th Nov

By week of occurrence and by Covid-19 mentioned on death certificate (deaths registered by 21 November 2020)



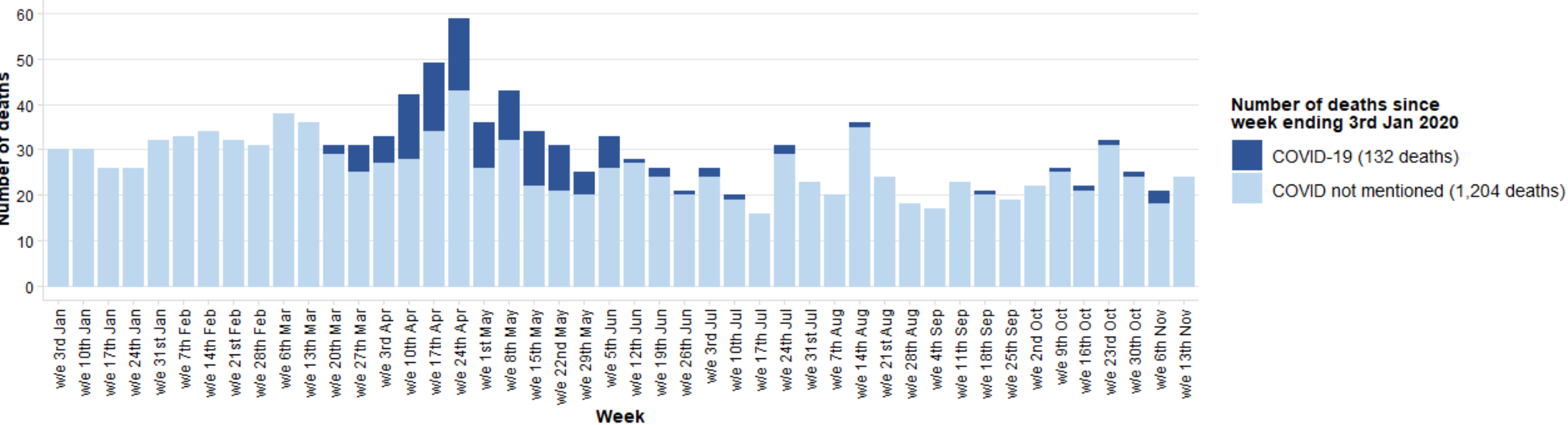
West Sussex Local Outbreak Control Plan – Deaths

Pack date: 24
November 2020

Source: Office for
National Statistics

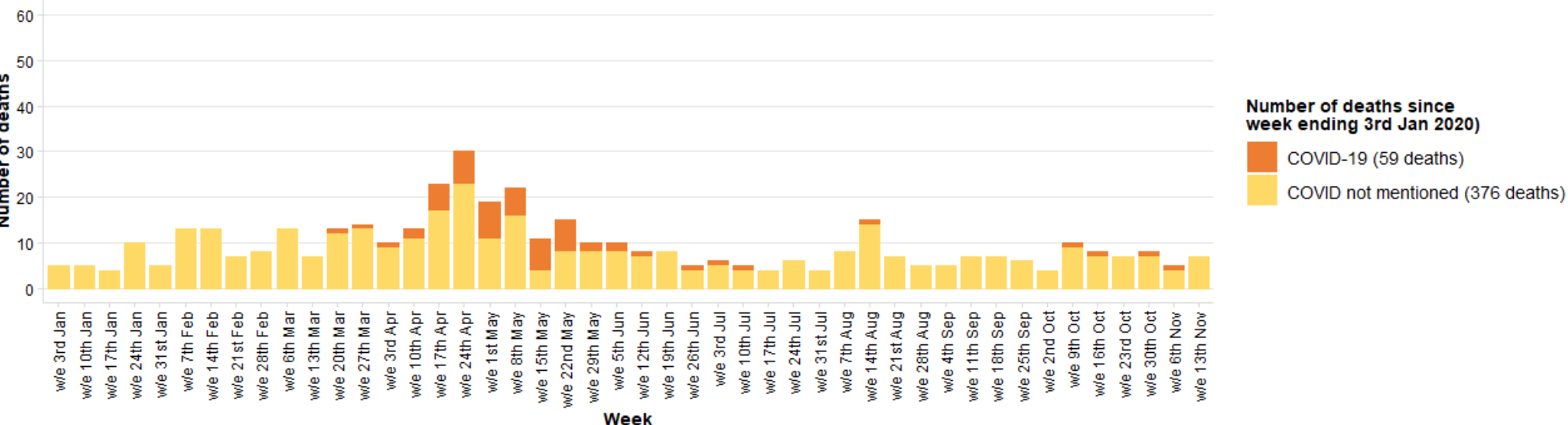
Weekly deaths; Horsham; w/e 3rd Jan 2020 - w/e 13th Nov

By week of occurrence and by Covid-19 mentioned on death certificate (deaths registered by 21 November 2020)



Weekly deaths in care homes; Horsham; w/e 3rd Jan 2020 - w/e 13th Nov

By week of occurrence and by Covid-19 mentioned on death certificate (deaths registered by 21 November 2020)



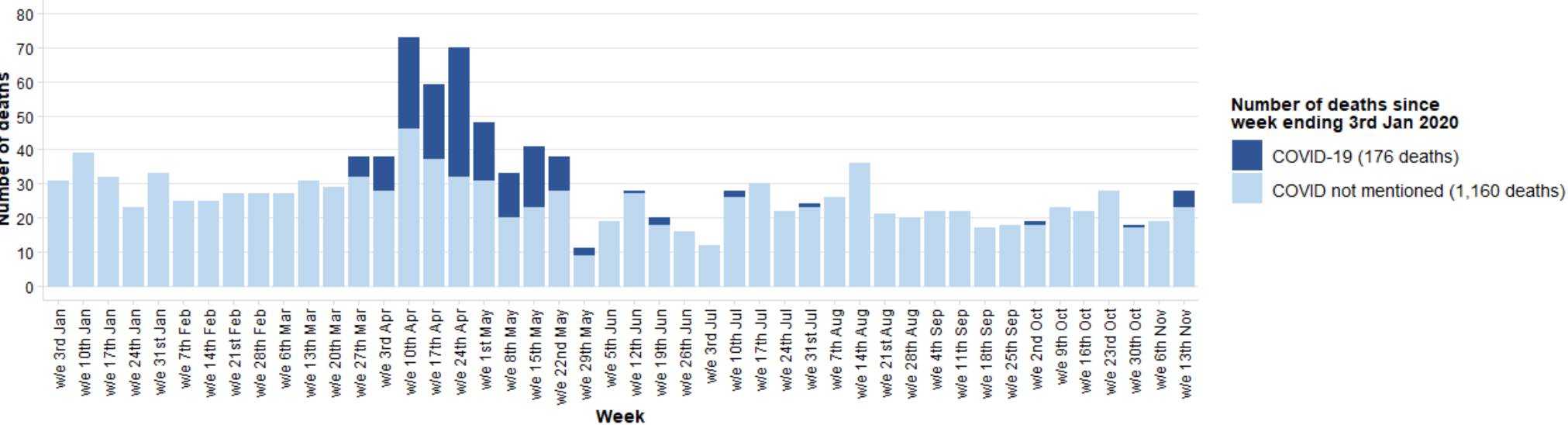
West Sussex Local Outbreak Control Plan – Deaths

Pack date: 24
November 2020

Source: Office for
National Statistics

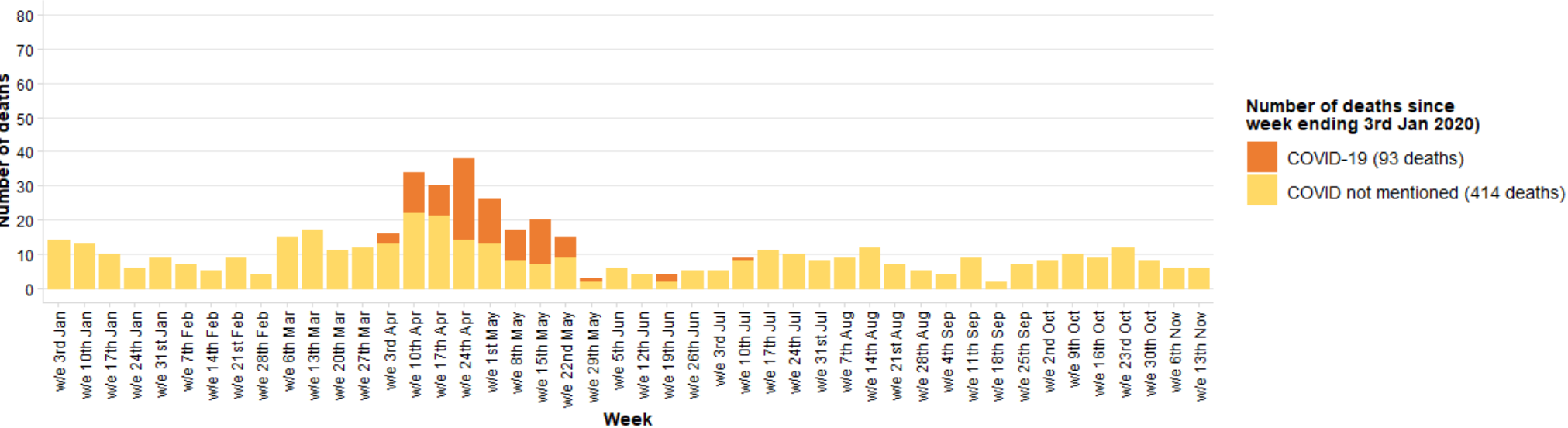
Weekly deaths; Mid Sussex; w/e 3rd Jan 2020 - w/e 13th Nov

By week of occurrence and by Covid-19 mentioned on death certificate (deaths registered by 21 November 2020)



Weekly deaths in care homes; Mid Sussex; w/e 3rd Jan 2020 - w/e 13th Nov

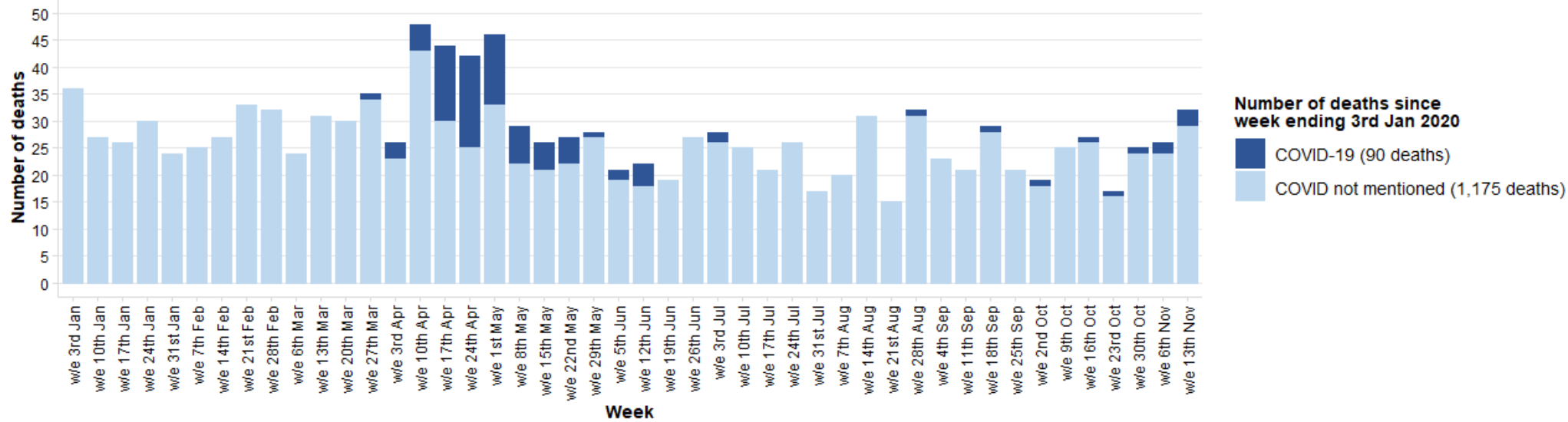
By week of occurrence and by Covid-19 mentioned on death certificate (deaths registered by 21 November 2020)



Pack date: 24
November 2020

Weekly deaths; Worthing; w/e 3rd Jan 2020 - w/e 13th Nov

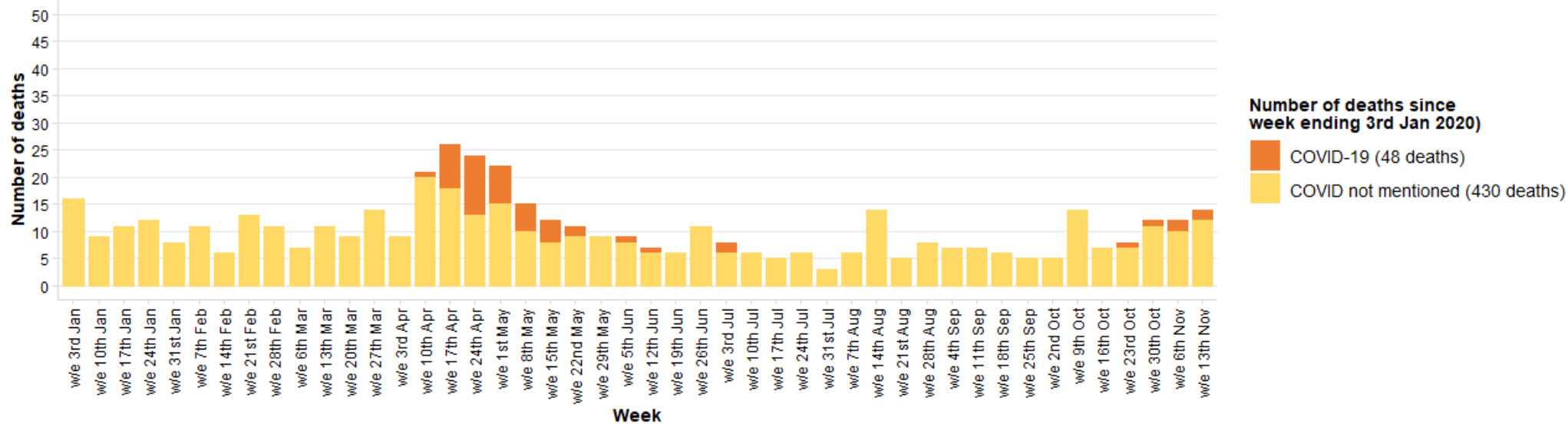
By week of occurrence and by Covid-19 mentioned on death certificate (deaths registered by 21 November 2020)



Source: Office for National Statistics

Weekly deaths in care homes; Worthing; w/e 3rd Jan 2020 - w/e 13th Nov

By week of occurrence and by Covid-19 mentioned on death certificate (deaths registered by 21 November 2020)



What		Link
Positive cases	Daily update on cases (shown as number of cases and also a rate per 100,000 residents)	https://coronavirus.data.gov.uk/
Positive cases and deaths	Using the cases and deaths tabs in the link - data are available at local authority level	https://coronavirus-staging.data.gov.uk/
NHS Pathways (callers to 111,999 and online 111 assessments)	Information on triages of 999 and 111 callers and completed online assessments which have received a potential coronavirus (COVID-19) final disposition (number and rate per 100,000 population).	https://digital.nhs.uk/dashboards/nhs-pathways
COVID-19: outbreaks in care homes	Weekly number and percentage of care homes reporting a suspected or confirmed outbreak of COVID-19	Care home outbreaks
Hospital Data	Regional data are in the public domain – click on the healthcare tab for information on admissions, patients in hospital and patients on ventilation	https://coronavirus-staging.data.gov.uk/
Deaths in Hospitals	Daily data on deaths in specific NHS Trusts	https://www.england.nhs.uk/statistics/statistical-work-areas/covid-19-daily-deaths/
Deaths	Weekly data are published by the Office for National Statistics (on Tuesdays).	Weekly death data from ONS
Deaths in care homes notified to CQC	Deaths relating to care home residents, provides some additional detail not available on ONS weekly release	Link to CQC Notification Data
Deaths – additional analysis	The Office for National Statistics have released additional analysis – including analysis below local authority level	Deaths at a sub local authority level
Google Community Data	Community mobility at a local authority level and compare activity (in terms of visits to type of places) with baseline period (3 Jan – 6 Feb 2020).	https://www.google.com/covid19/mobility/

Sources can (and frequently do!) change, access as at time of pack date.