

3-in-1 to ease credit crunch

With fuel prices soaring and the credit crunch hitting all families, there has never been a better time to make sure your children sign up for a 3 in 1 card.

The free card - for all West Sussex young people aged 5-19 in full-time education - gives them big discounts on bus travel and in shops and attractions.

The savings quickly add up.

For example, 16-19 year-olds currently pay the full adult fare for bus travel.

With a 3 in 1 card that's slashed by half. And the card can be used at all times of the day and at weekends.

"As many parents are probably paying out for bus fares for their youngsters, there is the potential for big savings on the family budget," says Henry Smith, County Council Leader.

"A £5 return journey becomes £2.50 for a 16-19 year-old and if they make that journey several times a week, the savings start to mount up.

"We introduced the card to reduce congestion and pollution on our roads by encouraging greater use of buses.

"Now the credit crunch, plus rises in food prices and fuel, means that every

penny counts for many families. "Not having to ferry their children around by car all

the time, and encouraging them to use the buses is also going to help people keep their petrol tanks that bit fuller for longer."

The County Council is also urging more shops and attractions to sign up for the scheme and offer discounts to card holders.

Over 100 businesses, from fashion shops to cinemas, have already joined and get their offers and services promoted on a special youth website and in Your Mag, a free magazine for



Alan Neave with granddaughter Katie 5, spread the word

card holders.

Already more than 14,000 youngsters have become card holders and are enjoying the third benefit of 3 in 1 - it's also a nationally recognised proof of age.

Now the County Council is urging young people

wanting a card to sign up before the school and college holidays as their photographic ID needs to be validated by a teacher or lecturer.

To apply - go to www.your3in1.co.uk or ring **01243 777330**

"Sweet" people wanted!

We need more lollipop people to ensure our schoolchildren are safe when they cross the road. And if you persuade someone to apply and we end up appointing, then we'll pay you a £50 'finders fee'!

Pay rates start at £6.57 per hour and there is no upper age limit.

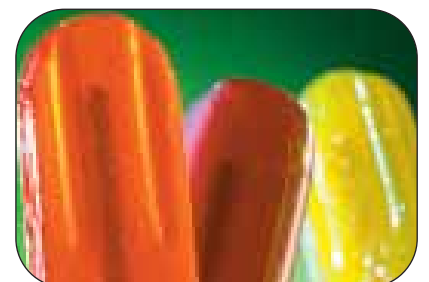
More info on **01243 777929** or view current vacancies on our website - search 'school crossing patrols'.



Fighting fires and much more
See page 3



Meet the Bookbus family
See page 4



The sights and sounds of summer - What's On
See page 9



This service is a cut above the rest!
See page 8



Wealth of courses for you
See Back Page





BWC is a list of approved traders drawn up by our Trading Standards Service and is designed to protect both consumers and businesses against unfair practices.
 If you would like to become a BWC trader, call **01243 642124** or go to our website under Trading Standards.

See some of the BWC traders adverts below

OVEN2CLEAN
 We Clean all makes of Domestic Ovens including Range, Aga as well as Hob, Extractor Fans & Microwave

- Non-toxic, low odour
- Removes grease and carbon
- C.R.B. checked

For your free quotation call **01903 506601**
www.oven2clean.co.uk

D VOAKES & CO
 Established 1960

- ✓ Fully insured
- ✓ Internal Decorations
- ✓ External Decorations
- ✓ Ceramic Tiling
- ✓ Bathroom/Kitchen renovations
- ✓ Free Estimates
- ✓ Trading Standards Approved

01243 865578
Mobile 07703 413021
 email: dvoakes@hotmail.co.uk

Hares Of Sussex
 Your local dealer for sales, servicing and MOT
 Providing independent and franchised dealer services across Sussex for nearly 100 years

- Any new make of vehicle supplied at competitive prices
- Used vehicle sourcing if you do not see your ideal car advertised
- Tyres, Exhausts and Air Conditioning servicing
- Competitive workshop and MOT facilities
- Local collection and delivery

Hares of Rustington
 Station Road, Rustington BN16 3BH
01903 772222

Hares of Henfield
 High Street, Henfield BN5 9DF
01273 495700

www.haresofsussex.co.uk

Decorating & Tiling Services

- Interior/Exterior
- Fully Insured
- No job too big or small
- Tidy, friendly, cost effective service
- Free quotations

K T M services
01903 205005
07971 471332

STOP SEAGULLS ON YOUR ROOF

BEST CHOICE
 Roofing & Construction
01903 773699
www.best-choice.info

F.S.M ROOFING AND CLADDING PROPERTY MAINTENANCE

- Tiling
- Lead work
- Upvc fascia and soffits
- Guttering
- Flat roofing
- Chimney repairs

20 years experience.
 All work guaranteed and fully insured.
07868 760348 or 0800 211 8150



How have we spent your money?

The County Council provides 80% of local government services including education, fire, roads and libraries, and here's how we spent your money.

The accounts for 2007/08 were approved by our Regulation, Audit and Accounts Committee and are now with the District Auditor for the final sign-off.

They show that revenue spending for 2007/08 was £797 million. The budget for the year included £15m of efficiency savings from our 'Fundamental Service Review' that have

been reinvested in services for children and adults, meeting the rising costs of waste disposal and introducing the 3-in-1 card providing concessionary fares for young people.

Final spending for the year was £4.4 million, or 0.6%, less than we budgeted for. Of this, some £2.8 million came from underspending by services. We also spent less on borrowing costs than we had expected and invested the money in our 'current account' at better rates than we had budgeted for. Set against that, we paid out £4.8m in redundancy and

pension costs as an up-front cost of our 'Fundamental Service Review'. This will pay for itself in years to come through reduced staffing costs helping to increase efficiency savings from Fundamental Service Review by a further £15m to £30m per year from 2008/09.

The table below shows how the underspending is made up, and the uses to which it has been put.

A total of £1.8m will be reinvested in improving services in 2008/09, with the rest placed in our reserve fund, which is designed to cover unexpected events and the impact of changes in government funding.

FINANCIAL YEAR 2007/08	Budget £m	Actual spending £m	Over/under(-) spending £m
Portfolio Budgets			
Adults' Services	162.0	162.0	0.0
Children and Young People	597.5	597.2	-0.3
Communications (includes Libraries/Help Points)	12.8	12.9	0.1
Deputy Leader (inc IT, CLCs*, Contact Centre)	1.9	2.5	0.6
Environment and Economy	7.6	7.5	-0.1
Finance and Resources	20.9	20.2	-0.7
Highways and Transport	59.9	58.4	-1.5
Public Protection	43.3	42.7	-0.6
Strategic Planning and Waste	40.0	39.7	-0.3
Sub-total	945.9	943.1	-2.8
Capital Financing and Investment	-125.3	-129.1	-3.8
Planned Changes to Balances/Additional Income	-20.1	-21.8	-1.7
Investment in Modernising Services	0.0	4.8	4.8
Contingency	0.9	0.0	-0.9
TOTAL NET SPENDING	801.4	797.0	-4.4
Use of underspending			
Investment in improving services			1.8
Transfers to reserves			2.6
TOTAL UNDERSPENDING			4.4

We have also spent £104.3m on capital schemes, such as road improvements, refurbished school buildings, new residential homes for older people and the new Crawley Library currently under construction.

The financial position for the year reflects the County Council's commitment to

reinvest unspent funds in modernising our services to make them more responsive to customer feedback and more efficient - against an ongoing background of devastating grant settlements from central Government.

Services have been encouraged to make savings within their budgets

wherever possible to provide one-off funds to invest in more efficient ways of working.

This report can only provide a snapshot of how we spend your money as effectively as we possibly can on the services you rely on.

The complete financial statements can be found at

www.westsussex.gov.uk/accounts/07-08

More information call Tim Stretton on **01243 777868**.

*County Local Committees

Advertisement

Future PERFECT?

The County Council is developing a Sustainable Community Strategy (SCS) and we want to hear your views on it.

The focus is on helping communities become more self-sufficient, with the County Council providing advice for people to choose how they access services for themselves.

We welcome your comments and suggestions by the end of July via email at cs.scs@westsussex.gov.uk or on the website at www.westsussex.gov.uk/scs or for further information please call **01243 777108**.

SCHOOL TERM DATES
4 Sept - 19 Dec 2008
Half Term
27-31 Oct 2008

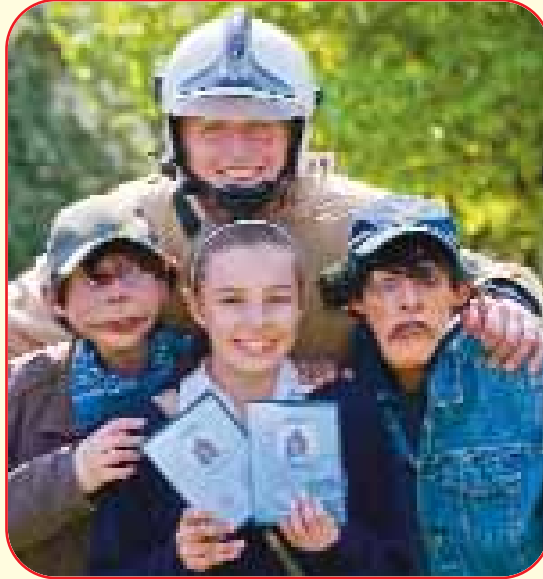
West Sussex County Council:
Switchboard: 01243 777100
24-hour Info: 0845 7581232
 Editorial: **01243 753595** or: connections@westsussex.gov.uk
 Advertising: **01243 777431** advertising@westsussex.gov.uk
 West Sussex Connections is delivered by Royal Mail to around 350,000 homes, is printed on environmentally-friendly paper and can be recycled.

Terms and Conditions
 The accuracy or content of any advertisement is not warranted by this Council nor does this Council endorse or guarantee any of the products or services advertised. The views expressed in this paper are not necessarily those of the Council.

They're fired up to help you!

Many people don't know that West Sussex Fire and Rescue Service is a vitally important part of the County Council.

And our 750 retained and full-time firefighters across the county do far more these days than just fight fires (although they'll still be there if you need them).



They rescue people from car and plane crashes.



It's not just humans.



They coach football for kids in a bid to teach them fire and road safety messages.



They educate people about the dangers of fire and ways to prevent fires.

They offer free home fire safety checks and provide smoke alarms especially for deaf people.

To find out more about how our Fire and Rescue Service can help you go to our website or call **01243 786211** or email wsfrs@westsussex.gov.uk

YOUR CALL ON OUR FIRE SERVICE

Our Fire and Rescue Service wants your views on plans to reduce the number of fires, traffic collisions and other emergencies.

The plan aims to reduce the risks by using resources more effectively to improve public safety. Proposals for 2008/9 include new emergency response standards for the county, and increasing the time spent on community education to high risk groups, which includes older people, young children, smokers and those in poor health.

We need your views by **22 August**. Find copies of the proposals in libraries, online at

www.westsussex.gov.uk/fire

by contacting WSFRS, Northgate, Chichester, PO19 1BD or phoning

01243 753706.



Pic : Eddie Mitchell

Advertisement

Mature Student OPEN EVENING

Thursday 28th August 2008 from 5.00pm to 7.00pm

Want to change job, be promoted, feel more confident or learn something new? Then Chichester College can help. We have a great range of exciting courses designed specifically for adults, which give you all the knowledge and skills you need to succeed. So come along to our Open Evening to find how we can help you!

For information about Chichester College visit our website: www.chichester.ac.uk or call: **(01243) 786321**

Chichester
college

Chichester College (Chichester Campus) | Westgate Fields | Chichester | West Sussex | PO19 1SB

Advertisement

Mortgages Made Easy™

Speak to **AToM!**

0845 40 40 340
www.atomltd.co.uk

AToM

All Types of Mortgages Ltd

AToM House | North Street | Horsham | RH12 1RQ

All Types of Mortgages Ltd (AToM) is authorised and regulated by the Financial Services Authority No 304030. Registered in England No 2661757. A fee of £395 is normally charged for mortgage advice upon completion. Applicants must be 18 or over. Written quotations on request, conditions apply. Errors and omissions excepted. YOUR HOME MAY BE REPOSSESSED IF YOU DO NOT KEEP UP REPAYMENTS ON YOUR MORTGAGE.

A Wilkie welcome for the birthday bus



The West Sussex Bookbus is a collection of memories on wheels for the Wilkie family from Selsey. The bus, run by the Library Service, is celebrating its 10th year of bringing stories and books to the under fives.

For Marina, Nicholas, Lawrie and Rosie Wilkie the bus has meant a lifetime of reading. Marina, who's 11, remembers it stopping outside her parent and toddler group – she says everything looks smaller now that she's grown a bit!

For eight-year-old Nicholas the bus is "a really cool place with millions of books," while for Lawrie, who's five, it's a fun place with lots of comfy cushions to sit on. Even two-year-old Rosie is old enough to enjoy the Bookbus.

Over the years mum Julie has regularly boarded the bus with all her growing family to introduce them to the world of reading.

The bus lends more than 6,000 books a year, and offers information to Early Years Groups on the coast between Selsey and Worthing.

See our website for Bookbus schedule.



CELEBRATE WITH US!

Book early for the 2009 Ceremonies Brochure. If you have a business connected with weddings, civil ceremonies or naming ceremonies, then you can get a discount on your advert if you book before 31 August. Why not advertise your business in the next issue of West Sussex Connections due out in October and reach over 350,000 households countywide? To find out more about this, and other advertising opportunities, please call **01243 756842** or visit www.westsussex.gov.uk/advertising

Thank you!

The County Council would like to thank all its partners – including the seven district and borough councils, parish and town councils, charities and health authorities – who work

together for the benefit of West Sussex residents.

Many of the articles you read in West Sussex Connections are about projects carried out by the County Council with one or more of our partners - but we do not have the space to thank each one individually.

Advertisement

Companionship? Independence? Security?







**For Sale
Claremont Gardens
Show Cottage now open**

- 20 Linked Garden Cottages
- Independent living with like minded people
- House Manager to offer support
- **Fine dining cuisine** in restaurant setting
- Social and activities programme


ROYAL BAY

For a detailed colour brochure or appointment to view please ring Charles Peck on 01243 816666 or visit our website www.claremontgardens.co.uk

Fontwell Park, Eastergate, West Sussex. Just off the A27/A29 roundabout between Chichester and Arundel.

**Claremont Lodge – Opened 1st June 2008
Gracious Living with Care**

- Arguably **West Sussex's finest Care Home**
- 24hour care by professional staff
- Residents' quality of life is of particular importance
- Social and activities programme
- Colour coordinated interior designed rooms
- Landscaped gardens and grounds


ROYAL BAY
CARE HOMES

Please call **0845 125 6166**
or visit our website www.royalbay.co.uk



It could be YOU!

If you think foster carers are just married couples with years of childcare experience then think again.

All sorts of people become foster carers, including young singles, older people, and those from diverse social and ethnic backgrounds.

Above all, foster carers need to have the patience, resilience, space, time, and energy to meet the needs of children in their care - be it for a few days, weeks, months or longer.

To really get a flavour of what it is like to be a foster carer - and to be a foster child - read our real-life case studies on our website at www.westsussex.gov.uk/fostering

They include the story of 'Carla' and 'Ann' who are happy and thriving in their foster home.

Foster carers are especially needed in the north of the county.

If you would like to know more about fostering, then complete the enquiry form online or contact:

North 01403 246400

email: family.placement.north@westsussex.gov.uk

South East 01903 839430

email: family.placement.south.east@westsussex.gov.uk

South West 01243 642483 / 01243 642467

email: family.placement.south.west@westsussex.gov.uk

Our Youth Offending Service is also seeking foster carers to work with young people aged between 10-17 who are going through the youth justice system and need short term care.

Male or female carers are needed, either single or couples from all backgrounds and ethnic groups. They need to be experienced in parenting, caring or working with young people aged 10-17, flexible and willing to provide a home at short notice, and be available during the day. For more information call Sarah White on **01903 718739**.

'WORTH'while service for victims

WORTH Services, which help domestic violence victims, are to be set up at St Richard's Hospital, Chichester, and Haywards Heath's Princess Alexandra Hospital. WORTH - Ways of Responding Through Health - Services give victims the opportunity to talk with specially

trained staff who can offer immediate confidential support. They have been successfully operating at Worthing Hospital's A&E Unit and Crawley Hospital's Urgent Treatment Centre. Here is a real-life example of how WORTH helped 'Audrey' (not her real name).

AUDREY'S partner had a history of violence. Not only had he attacked her, he'd also threatened to shoot her and her two children.

Yet Audrey - who had money problems and reading difficulties - didn't want to go ahead with court proceedings. The reason: previous dealings with agencies had not been positive, which meant she didn't trust people.

She was offered the help of an Independent Domestic Violence Advisor from one of the WORTH services.

Over 12 weeks, the Adviser had 103 contacts with regard to Audrey, including phone calls, one to one meetings and liaising with other agencies on her behalf. Arrangements were made to drive her to court and support her throughout the waiting time.

However, on the day of the proceedings, Audrey would not answer the door and the case was dismissed.

When the Adviser made contact the following day, Audrey revealed her former partner had visited her address a number of times over the weekend and threatened to shoot her and the children if she attended court.

Audrey refused to disclose this to the police and said she only trusted the Adviser. By the end of the day a place of safety had been arranged for Audrey and her children.

Police were told of the incident and relevant safety measures were put in place to protect her.

Letters were written by WORTH to support housing applications and to ensure her case was treated as high risk and given priority.

Audrey has now moved into her own home with her children, who have started at a new school. She is happy with her new lifestyle and has a support network as a result of the WORTH Service.

TIME FOR A BREW!

A mini-mountain of paper and card weighing 1,150 tonnes - the equivalent of nearly 700 London cabs - was recycled by West Sussex businesses last year.

This follows the start of a County Council-led project that saw District and Borough Councils launching local schemes offering bargain-priced recycling.

The project had £208,000 funding from the Business Resource Efficiency

and Waste Centre (BREW), part of the Department for Environment, Food and Rural Affairs.

The West Sussex Sustainable Business Partnership can help you recycle other materials and also offers a wide range of FREE business support services - call Shelaine Weller on **01243 756869** to find out how they can help you, or call **01243 642106** to join the BREW recycling scheme in your area.

Tasteful Summer

The summer issue of Taste West Sussex will be out from the end of July, and it is full of mouth-watering features which will appeal to all of you who love to buy and eat local food. To subscribe, call **01243 756842** or see our website.



Advertisement

Inheritance Tax? Long Term Care?



Your house may be sold to fund it!

However, creating a Family Trust is the simple and affordable way to protect family assets in an unpredictable future.

Guard against inheritance tax and long term care, remarriage, divorce or financial problems (of surviving spouse or children) and ensure **YOUR** family isn't disinherited.

Call us to see how we can help.

01273 236036



Estate Planning Specialists for Wills, Trusts & Probate

ADVERTISEMENT FEATURE

Will Inheritance Tax still affect you?

Pre Budget speech October 9th 2007 - Many people now have the impression that: 'Inheritance Tax planning - is now a thing of the past' and 'Chancellor increases the Nil Rate Band to £600,000'. Both statements are equally inaccurate and in fact the need for estate planning and to review our affairs remains essential!

Fact - this budget announcement hasn't given us anything that we didn't already have the right to in the first place. That is, everyone is entitled to an inheritance tax allowance (known as the Nil Rate Band), currently £312,000. Everything above this limit is taxed at a whopping 40%!

The pre budget announcement implied that married couples and civil partners now have a combined inheritance tax allowance of £600,000 rising to £700,000 by 2010. They don't! What they have is a transferable Nil Rate Band, which means that if the first deceased hasn't used their allowance, both allowances can be used upon second death. However, the devil is in the detail! The allowance is not given automatically but has to be applied for and only if strict criteria are met within the very quick time frame of six months from the date of the second death.

What have we gained? Nothing - which we didn't already have the right to in the first place!!!

What have we lost? An opportunity - to ensure our allowance is used whilst we're still alive to do so, because many people now have the wrong impression that planning is no longer necessary.

The Key issues that still need to be addressed remain as:-

- Inheritance tax and long term care, or remarriage, divorce and financial troubles can all conspire to disinherit your true intended beneficiaries. Without exercising your right to use your tax allowance or pass on your share of the family home whilst you're still alive to do so - your assets will always be vulnerable.
- Usually most couples leave their estate to each other when they die. Whilst this is admirable in intent, it is neither tax efficient nor guarantees their assets will not fall into the wrong hands!
- If you are married or a registered civil partnership then the allowance is £312,000 each. You can use it now, or possibly lose it!
- If you are an unmarried couple then you could get taxed on the same assets twice. When the first partner dies the taxman takes his 40% share of everything over £312,000, and then again when the second dies!
- Who knows what legislation may be present when surviving spouse/partner eventually dies?
- Who knows at what rate, assets left to survivor will increase by in the years to come?

• By leaving everything to each other, and then to their children, (or chosen beneficiaries), no one can foresee what claims there may be upon the survivor (or their beneficiaries) during the remainder of their lifetime.

Solution - By creating a Family Trust as well as a Will, it is possible to reduce Inheritance Tax or even completely avoid it. You can also ensure, during your lifetime, that family assets are protected long after you've gone, rather than leaving it to chance. You can shelter assets and still provide as much access and control for your surviving spouse or partner as you choose. Trusts are no longer just for the wealthy but are now available for people from all walks of life, who wish to protect their assets for their nearest and dearest.

If you think you may be affected by any of the issues raised in this article please phone and we will be happy to provide you with further information.

Call Michael Doctors on 01273 236036

SUPPORTING



CHANGE

The way social care is provided in West Sussex is changing. Called Self Directed Support (SDS) it means putting more people in charge of their own lives.

The change means those eligible for social care are given a Personal Budget. They are then able to decide for themselves what support they need to help them achieve their own goals in maintaining their independence.

Funding for the support comes mainly from the County Council but it may also include contributions from other sources, such as payments for housing support to help people remain independent. Those benefiting are given help and advice and agree how they will spend their Personal Budget.

Jack (left) is typical of those benefiting from the new system. He had to give up his job three years ago and needs assistance with all aspects of care, provided mainly by his wife Teresa. But the financial pressures of being disabled and on a low income restricted their lives. But with the flexibility of a personal budget they have been able to design Jack's care to suit their lifestyle. They are purchasing the support they need such as help with their garden, adaptation to their vehicle and wheelchair, agency care for showering and some complementary therapy. Jack said: "The Personal Budget has made Teresa's life so much easier and the stress levels have gone down. It has opened the world up to us."

The County Council hopes that self-directed support will be available to all those eligible by Spring/Summer 2009. We recognise that not everyone will want to manage their own budget and in these circumstances the County Council will make arrangements on their behalf.

For more details about SDS see our website.

Advertisement

Bespoke Picture Framing
at reasonable prices with individual service.
CM FRAMING
0791 9897 231
Large selection of pictures for sale
The Pools, Shoreham Road
Nr Henfield BN5 9SE

Blazing A Trail

A new recruitment agency aims to increase the number of people with mental health problems finding a job and staying in employment.

'Paritas' is backed by the County Council and the Sussex Partnership NHS Trust and is the first of its kind in England. For further information visit www.paritas.org.uk or e-mail david.cain@westsussex.gov.uk or call 01903 204083.

Advertisement



Looking for childcare or ever considered working in childcare?

West Sussex Children's Information Service offers free, up-to-date and impartial information on:

- Registered childcare (direct from Ofsted)
- Free nursery education
- Help with childcare costs
- Other types of childcare provision
- Services for children and families

Children's Information Service

01243 777807

(Your calls may be recorded)

When ringing please quote Ref: C00112

childrens.info.service@westsussex.gov.uk



west
sussex
county
council

www.childcarelink.gov.uk*

*(Not all our registered providers include their details on the website)

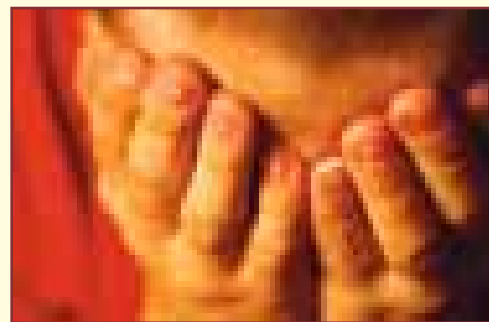
Keeping them Safe

New pages on our website encourage everyone to play their part in helping to keep vulnerable adults safe from abuse.

Adult abuse is where someone who is unable to keep themselves safe is ill-treated or neglected. They may be at risk and unable to defend themselves because of their age, mental health, a physical disability, a learning difficulty or physical health.

It includes a guide on what to do if someone is suspected of being abused, information on the Adult Safeguarding Unit and what it does, and guidance on what abuse is.

There is also a new safeguarding alert form that people can use if they suspect someone is being abused.



See the website or contact the Adults' Services Helpdesks:

- **Arun:** 01243 642400
- **Adur and Worthing:** 01903 839100
- **Chichester:** 01243 752999
- **Crawley:** 01293 895100
- **Horsham:** 01403 213100
- **Mid Sussex:** 01444 446100

Emergency Help

Unpaid carers living in West Sussex are to get emergency respite support in a new service.

The service is free and has been developed by the County Council in partnership with the three West Sussex Crossroads Schemes, who will be delivering it.

The emergency service is designed to make sure there is back up and support for carers who are unable to care for someone because of an emergency situation, for example if they became ill.

Crossroads will ensure that experienced care workers are able to take over for up to 48 hours, or 72 hours over a weekend or bank holiday.

To register for the scheme contact Crossroads on **01403 243924** or ICIS on **01903 859929**.

More details available on our website.

Advertisement

HOME VISITING OPTICIAN
Do you have difficulty in getting to an Optician?

Then contact "Eyes at Home" for a **FREE** Nhs Eye Examination

For a professional & caring home visiting service call **0800-3457509**

www.Eyesathome.co.uk

Advertisement

STICKLANDS CURTAINS & BLINDS

- Made to measure curtains and blinds
- Tracks and poles supplied and fitted
- Large selection of fabrics
- Alterations and relining
- Our fabric or yours
- Home visits

Contact Sarah or Clare
07885 462 025
or email
sarah.stickland@btinternet.com
for a free no obligation quotation

What's On

in West Sussex



Get out and about in West Sussex this summer!
Here's just a selection of events and you can find loads more at www.westsussex.gov.uk

July:

4: **Georgia Mancio Sextet;** Chichester Jazz Club, Pallant Suite; **Hugh 01243 527730.**

9: **Two Harbours Habitats Trail;** Pagham and Chichester harbours; **Booking essential on 01243 512301.**

11: **Treasure Island,** open air production Quantum Theatre Company, Fishbourne Roman Palace; **01243 785859** or www.sussexpast.co.uk

12: **Proms at Petworth Park** with firework spectacular; **0870 8422230.**

12: **Fontwell Park Festival;** **01702 427100** or www.fontwellparkfestival.co.uk

12 & 13: **Arts, Crafts & Gifts;** Leonardslee Gardens, Lower Beeding; **01403 891212** or www.leonardsleegardens.com

12 & 13: **Vintage & Classic Vehicle Show;** South of England Showground, Ardingly; www.ardinglyvcvshow.org.uk

17: **Bat Walk & Dinner;** Uppark House; Booking essential on **01730 825857.**

19: **Chichester Pro Camerata** new professional orchestra Concert, St Paul's Church, Chichester; **01243 551196** or email info@chichesterprocamerata.co.uk

20: **Rare Breeds Show;** Weald & Downland Open Air Museum; **01243 811363** or www.wealddown.co.uk

24: **Stream Walk;** Chichester Harbour; Booking essential on **01243 512301** or www.conservancy.co.uk

25: **Choirpower Summer Concert;** Chequer Mead Theatre, East Grinstead; **01342 302000.**

25 - 9 Aug **Southwick Camera Club Photographic Exhibition;** Marlipins Museum, Shoreham; **01273 462994.**

August:

4-29: **Family Fun at Borde Hill Garden,** Haywards Heath; **01444 450326** or www.bordehill.co.uk

7-9: **A Grimm Night for Hans Christian Anderson** by Young Wick Theatre Company, Southwick; **01273 597094** or www.wicktheatre.co.uk

9: **Fete & Craft Show;** West Meads Community Hall, Bognor Regis; **01243 822072.**

9: **Battle Proms Concert with fireworks;** Borde Hill Garden, Haywards Heath; **01444 450326** or www.bordehill.co.uk

16: **Beach Beasities;** Pagham Harbour, meet in car park at 4pm; **01243 641508.**

17: **Marine Madness;** Pagham Nature Reserve 12-5.30pm, admission free; **01243 641508**

23-25: **New Lipchis Way Walk;** Booking essential; **01903 813381**

27: **Family Arts & Crafts Day;** Worthing Museum; **01903 221443**

29 & 30: **Jazz in the City 2008;** Venues in Chichester; **Hugh 01243 527730**

September:

1 & 2: **Water World;** Buchan Country Park, Crawley; Booking essential on **01293 542088**

7: **Country Crafts Day;** High Salvington Windmill; **01903 266628** or www.highsalvingtonwindmill.co.uk

13: **Canal Walk from Barnham to Ford** along the disused Portsmouth and Arundel canal; **01903 773575** or email adgeroberts@yahoo.co.uk

12-14: **Findon Sheep Fair & Festival;** Nepcote Green; www.findonsheepfair.co.uk

13 & 14: **Worthing Model Railway Club Annual Exhibition;** Boundstone Community College, Lancing; **01903 764294**

17: **A Century of Music and Laughter;** Chequer Meads Community Arts Centre, East Grinstead, **01342 302000**

We cannot accept responsibility for events we publicise. Please phone venues beforehand to check information.

Nicks Personal Training
20% Discount for WSSC staff
Book now for your **FREE** consultation
07815993198
www.nickspersonaltraining.co.uk

Arundel Castle
EVENTS 2008

Sunday 22 June & Sunday 13 July
Medieval Murder Mysteries in the Keep

Sunday 6 July Distant Trumpets
Storyteller - Tales of Agincourt 1415

Sunday 20 July Activity Day - Raven Tor
Pirates, Have-a-go-Fencing & Archery,
Storyteller

Tuesday 29 July - Friday 1 August
Distant Trumpets Pro Jousting displays & practices

Saturday 2 August and Sunday 3 August
Grand Medieval Destrier Pro Jousting -
England v France, Raven Tor Knights
Tournament (15 C) & Encampment.
Storyteller

Monday 4 August Meet a Knight in the
Keep & Victorian Kitchen Demonstration

Monday 11 August Meet a Knight in the
Keep & Victorian Kitchen Demonstration

Thursday 14 August & Tuesday 19 August
Activity Day - Raven Tor Have-a-go-
Fencing and Archery

Monday 18 August Meet a Knight in the
Keep, Victorian Kitchen Demonstration

* EVENTS ARE CORRECT AT TIME OF GOING
TO PRESS.

NEW FOR 2008

THE COLLECTOR EARL'S GARDEN
OPENED BY HRH THE PRINCE OF WALES

Visit WWW.ARUNDELCASTLE.ORG
for the latest event information*

Arundel Castle, West Sussex. Open Good Friday
21st March - Sunday 2nd November, Tuesday to
Sunday inclusive throughout the season, plus Bank
Holiday Mondays & August Mondays, 4th, 11th,
18th, & 25th. For more details, please call us
on: 01903 882173

High Beeches Gardens
01444 400589
www.highbeeches.com

2 for 1 entrance offer
Connections readers can enjoy
an amazing two for one ticket offer with
this voucher, from July until the end of
September 2007, and all accompanied
children under 14 are admitted free.
High Beeches Lane, Handcross, W. Sussex, RH17 6HQ

Fishbourne Roman Palace
The mosaics from the first century have been on display for forty years and are as fresh as the day they were discovered.
Café, picnic area and free parking.
www.sussexpast.co.uk
Salthill Rd, Fishbourne, Chichester
PO19 3QR Tel: 01243 785859

THIS SATURDAY, 10TH JULY
FONTWELL PARK FESTIVAL
THE MUSIC OF MOTORS - FEATURING THE MUSIC OF THE
TEMPTATIONS - SUPREMACY - FOUR TOPS - JACKSON 5 - LIONEL RICHIE
PLUS THE BEST OF THE 60S AND 70S
JANE McDONALD & ALEXANDER O'NEAL
01903 764294 • 01903 642088 • 0871 255 4444
Arundel Palace 148 Park Rd Chichester, West Sussex PO19 3QR
www.fontwellparkfestival.co.uk

Indoor Play

Fascinating Exhibitions

Daily Light Shows

Outdoor Play

No Ordinary Zoo!

As always, you'll see all the best animals... Call 01243 785859

BORDE HILL

Country Fair

Saturday 16th & Sunday 17th August 2008

Borde Hill Garden
of magnificent views, many miles of
terraces, walks and paths

10.00am - 5.00pm (10.00am - 4.00pm on Sunday)

High Beeches Lane, Handcross, W. Sussex, RH17 6HQ

HEAVY LOADS ON HIS SHOULDERS

Every year thousands of lorries carrying abnormal or heavy loads move along the roads of West Sussex.

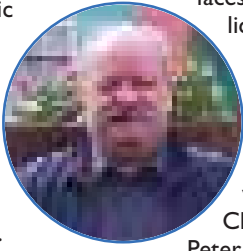
Their weight and size means that if they take the wrong road they could collapse bridges, damage historic buildings and wreck road signs.

But most pass without incident thanks to the work carried out by Peter Keen (right) in our Highways Department.

Peter ensures that all lorries carrying Heavy Abnormal Indivisible Loads (HAIL) take safe routes through the county. A HAIL is any load that can't be broken down for transit, for example giant 200 tonne transformers, excavators and mobile cranes.

Any haulier wanting to move a HAIL load has to inform Peter at least two days in advance of their planned route. He checks that the route is both safe and suitable before giving the go ahead.

Any HAIL carrier who fails to notify Peter is liable to a £2,000 fine and the driver



faces losing their licence.

"One of the most difficult loads we had to move was a dredger which was built in Chichester," said Peter. "It was 20 feet six inches wide and we had to adjust traffic signals and signs

and lift telephone lines to make sure it reached its destination at Chichester Harbour safely.

"On another occasion we had a 75 tonne load moving through Chichester. We had to ensure it went on the right hand side to stop it collapsing cellars on the other side of the road."

Last year Peter dealt with over 30,000 notifications to move HAIL loads on roads throughout the county. He works closely with the police and other colleagues in the Highways Department to ensure these abnormal loads take a safe route.



Advertisement

Every speed camera is a memorial to someone who has been killed or seriously injured in road crashes

Pay Your Respects - Slow Down!

www.sussexsaferroads.gov.uk

*The Sussex Safer Roads Partnership looks at all injury accidents, vulnerable road user casualties and the local community when considering sites for camera installation. Set percentages of vehicles must be exceeding the speed limit and all other cost-effective road engineering options also have to have been considered. Excluding exceptional sites. Full criteria available from the SSRP.

A CUT ABOVE!

A new bus service has been launched - but there's only ever a driver and two passengers on the top deck.

The open-top double-decker has been transformed as a novel way of keeping the county's roads free of overhanging branches.

A tree surgeon using a saw works from the top of the bus as it drives slowly along the road. He has a buzzer, which is used to signal the driver to stop while branches are cut back.

If you know of some branches that need to be lopped, call **01243 642105**.

Advertisement

Learn to drive like the experts on the Young Drivers' Skills Course

Aged between 17-25? You could benefit and improve your driving skills and awareness through this on-road course with Advanced Driving Instructors - run by West Sussex County Council in partnership with 'Minerva Accord Driving Services' and 'Skid-Control' on the skid pan at Goodwood Motor Circuit.

In addition to this, you will be offered the opportunity to drive a Ferrari!

The course, which is heavily subsidised by West Sussex County Council, costs just £60.00 or £120.00 when including the Ferrari drive.

Our Gift Vouchers which are valid for a year, make a great present, especially when choosing the exciting Ferrari drive option. This will give you the opportunity to drive 3 laps (approx. 7 miles) of Goodwood Motor Circuit at the wheel of this prestigious car!

For information call **08452 600 650** or visit www.westsussex.gov.uk

www.sussexsaferroads.gov.uk

Can you solve this?

You can now go to our website to view a series of mystery photos which have been donated to our Archives, Record Office and Libraries - but we need you to help us identify them.

You can also read all the comments and memories from residents about photos previously featured in West Sussex Connections.

This photo shows a large group of people outside a mystery building, round about 1960. Do you know the building, or any of the people, or are you in fact in the photo?

Other mystery photos featured currently on the webpages include four women from a Crawley drama group in 1957, shepherd William Moulding with sheep somewhere in West Sussex, some roads which could be in Worthing and two men next to an old car and a modern bungalow, taken in the 1950s.

For a wealth of information and photos on the



fascinating past of West Sussex go to our website under Libraries and Archives.

The photos featured in West Sussex Connections are also on our website, go to More News from the homepage.

Rural Rhyme Time and More!

Poems and Puddings is a project which aims to bring a variety of exciting literary arts events into the heart of rural West Sussex.

There is a whole host of events lined up to appeal to a wide range of residents.

You can have a poetic time this summer by getting involved in free 'How to Write Poetry' workshops. Postcards will be distributed so residents can write their own poem about local landmarks, as part of a project called 'A Sense of Place'. The poetic postcards will be exhibited in October.

Music, poetry and performance will come to rural Sussex from 1 - 5 October at Amberley Working Museum, as part of the **Walking West Sussex Festival**, which offers 29 walks between one and 12 miles. There will be theatrical walks created by 'The Company' - a tale of post-war Britain where not everywhere is peaceful. Another treat will be the musical interludes played by Lou Bradbury (various wind instruments) and Judith Soutar (cellist) to accompany keen and enthusiastic walkers along three scenic walks. There will also be a poet-in-residence at the Museum who will use the working train and stations to tell tales through lively poetry and performance.

For more info on Poems and Puddings call **01243 753897** or for the Walking Festival call **01903 812727** or see our website.

THE BIG PICNIC

Culture abounds at our **Celebrate! West Sussex** four-year festival which will be launched on 24 August with a countywide Big Picnic at official sites based in each district. The Picnics mark the handover by the Beijing Olympics to the London 2012 Games. There will be strong community input, exciting themes of childhood, urban and floating picnics and a mix of locally created work and regional and national performers. For more info go to www.westsussex.gov.uk/arts



HELP! I NEED SOMEBODY!

Home is where the heart is and Homeshare is a simple idea that helps people to help each other.

It places two people with different needs together so they can offer mutual support.

A householder is someone who has a home they want to share, and needs help with daily tasks like cooking and shopping.

A homesharer is someone who needs accommodation, and is willing to help the householder for up to 10 hours a week, in exchange for somewhere to live.

Interested? See below for just a handful of the people who are searching for a 'match'.

Householders

Emma, 23, from Haywards Heath: Would like to gain confidence to socialise more, she hopes a homesharer will encourage this and share some of the household tasks.

Arthur, 82, from Southwater: Looking for a female homesharer to help with some cooking and maybe go out sightseeing for the day.

Phillip and Pat live in Arundel: Phillip has Alzheimer's Disease and Pat would like a homesharer to help with some cleaning and cooking, so she has more time to spend with Phillip.

Homesharers

Monique lives and works in Crawley as a dental nurse, she is able to help with cooking, cleaning or gardening.

Daniel teaches in Worthing, although he would like to live in the area, he would consider anywhere in West Sussex, if he found the right householder!

Roger is 56 and works as a postman, he would like to find a homeshare in the Lavant area, and can do a number of tasks to help the householder.

For more info about Homeshare contact: Dawn Blake on **07738 641897** or email dawn.blake@westsussex.gov.uk

Advertisement

Your Pathway to Success @ Brinsbury Campus

Agriculture

Animal Management

Conservation

Construction

Creative Crafts

Equine

Hairdressing

Foundation Studies

Hair & Beauty

Horticulture

Motor Vehicle

Brinsbury Campus

1000 University Road, Brighton, BN1 9QJ

01243 786321

www.chichester.ac.uk



Make the most of your compost bin. Buy a kitchen caddy for just £4 while stocks last.*



TO ORDER YOUR BIN CALL 0845 077 0757 quoting 55CO2 or visit us online at www.recyclenow.com/compost



Compost Converter (220ltr)

£10.00

Manufacturer's SRP £40.00
Height 90cm
QUANTITY



Compost Converter (330ltr)

£13.00

Manufacturer's SRP £50.00
Height 100cm
QUANTITY



KOMP (250ltr)

£26.00

Manufacturer's SRP £66.00
Height 105cm
QUANTITY

NAME _____ ADDRESS _____

POSTCODE _____ DAYTIME TELEPHONE _____ Kitchen Caddy At reduced price of £4

I enclose a cheque/postal order for £ _____ payable to DHL – Home Composting Or please debit my Mastercard/Visa/Delta/Switch/Maestro account £ _____

Start Date _____ Expiry Date _____ Issue Number _____

Card Number _____



Please return to: WRAP (West Sussex) Campaign, Freepost LS6334, LEEDS LS14 1YY

From time to time WRAP (Waste & Resources Action Programme) and West Sussex County Council may send you **FREE useful info, newsletters** and **tips & advice** to help make composting easy and fun. Please tick this box if you **do not** wish to receive these items If you prefer us to keep you informed by email please provide your email address below:

EMAIL: _____ CODE 55CO2



Offer limited to 2 bins per household and to West Sussex residents only. Expect delivery within 28 days. If you wish to cancel your order before the bin is delivered or if the bin has been delivered and you wish to return it, please phone the customer care line on 0800 107 3798 within 7 working days. Offer is subject to availability and closes March 2009, though stocks of some bins are limited and may run out sooner than offer end. WRAP works in partnership to encourage and enable businesses and consumers to be more efficient in their use of materials and recycle more things more often. This helps to minimise landfill, reduce carbon emissions and improve our environment. * One kitchen caddy per household with bin purchase, whilst stocks last. Actual colour may vary.

For today, tomorrow and forever

An independent not-for-profit company set up in West Sussex to spearhead the drive to radically reduce rubbish in the county couldn't have a more appropriate name: **Better Tomorrows.**

For it will develop policies and initiatives to shape and protect the county's future environment for years to come.

The Board of Better Tomorrows includes seven volunteer directors from the community, plus representatives from waste companies, the County Council and District and Borough Councils.

Julie Wilkinson, Waste Strategy Manager, said: "This means it brings together commerce, local authorities and the community. The Board is committed to producing initiatives that will be innovative and will challenge us all to become more aware of the impact waste has on our community and the environment."



New Visitor Centre Plans

A new Visitor Centre at Pagham Harbour is in the pipeline and you can tell us what you think of our plans.

Consultation runs from 4 August until 27 October, with meetings where you can come and see the plans and give your views.

If you can't make it to one of these events, then pick up a leaflet in your local library, or visit our website under 'Pagham Harbour', where you can find details of the meetings.

Local garden waste makes local compost

GENUINE organic compost that couldn't be more local - it comes from West Sussex garden waste and has been processed here in the county - is now on sale at nine of our Household Waste Recycling Sites (HWRS). Called Reclaim Organic Soil Conditioner, it cost £4 a bag or three for £10.

You can also buy Reclaim Organic Soil Conditioner at Imberhorne Nursery, Imberhorne Road, East Grinstead, while the town's Household Waste Recycling Site, which is next door, undergoes major refurbishment.

The County Council has arranged for West Sussex residents to buy top quality composters - and have them delivered free - from as little as £10 (usual price - £40).

To order a bargain-priced composter call **0845 077 0757** or visit

www.recyclenow.com/compost

See our website for a list of HWRS.

Advertisement

CAMPAIGN REPORTS: Fit for the Future?

The County Council has slammed the decision by West Sussex Primary Care Trust (PCT) to reduce hospital services across West Sussex.

Under the PCT's 'Fit for the Future' proposals, Worthing Hospital will become the major general hospital in the county. St Richard's Hospital in Chichester and the Princess Royal Hospital in Haywards Heath both retain some form of A&E services under the plans, but will be downgraded to become local general hospitals.

County Council Leader Henry Smith said: "As a County Council we have stressed from the start of the Fit for the Future process that we did not want to see a reduction in services anywhere in this growing county, for any of our residents."

At the time of going to press, the Joint Health Overview and Scrutiny Committee, chaired by the County Council, was scrutinising the Fit for the Future process and was due to meet at the end of June to consider the PCT's proposals and make its own views known before the PCT Board meets again in July.

The Committee then has the option of referring the PCT's final decision to the Secretary of State for Health.

Impact Study on Post Office Closures

We have commissioned the University of Chichester to conduct a year's study into the impact of Post Office closures across the county.

A total of 36 Post Office branches are being closed across West Sussex, with six of those being replaced by outreach services.

The study is looking at the economic, environmental and social impact of the branch closures on both urban and rural areas and the report will make recommendations as to how the County Council can support the communities affected by the closures.

We will continue working with other organisations and agencies while this study is being carried out to explore how to help the communities and businesses affected by the closures.

Advertisement

west sussex **greenclub**

FREE MEMBERSHIP

PUBLICATIONS

EXCLUSIVE MEMBER EVENTS

be a really **green** gardener!

TIPS & ADVICE

Whether you have a small garden with a few pots, several acres and a tractor, a window box or allotment, gardening is one of the most ecologically rewarding things you can do...as well as being terrific fun!

To help you get the most out of your horticultural pursuits and become a more environmentally sound gardener, the West Sussex waste partnership which includes the County Council in partnership with the Districts and Borough Councils and Viridor Waste Management Ltd, invite you to join the **Green Club**

EXCLUSIVE DISCOUNTS

For details visit www.wsgreenclub.org or call 01243 642106

recycle for West Sussex

west sussex **green fingers** Under 12 years old?

SPECIAL OFFER

Food Digester and Food Waste Composter Bins available from WSCC, District and Borough Councils at a reduced price!

FOOD WASTE DIGESTER



GREEN CONE
at **£14.95**

Please note digging required to install the Green Cone

FOOD WASTE COMPOSTER



GREEN JOHANNA
at **£19.95**

Call **0800 052 0462** or log on to www.bettertomorrows.org.uk

Blaze a trail into the world of learning

You're never too old!
Our youngest learner is 19, our oldest 96, with thousands in between!



Take the plunge this year and pledge to learn a new skill

From basic English and Maths, through foreign languages, Keep Fit, arts, crafts, computer skills, marine engineering to bike maintenance - there is sure to be a course that tickles your fancy. Whatever you decide, Adult Learning gives you an exciting opportunity to explore something new.

instrument, singing, dancing, circus skills or dabble in painting and drawing. If you want to improve your job opportunities – then look no further than a whole range of new courses to meet your needs.

If you can't find what you are looking for just give one of our team a call and we will do our best to work with you and develop new opportunities.

Give it a try - surprise yourself, there's a whole new world out there waiting to be unwrapped.

Many of our learners say that taking on a new challenge inspires them and can transform lives. One learner on the extreme sports programme told us it had helped to overcome her fear of heights. Another said that learning a language made her holiday more fun. A local business told us that new skills the workforce had learnt through our tailor-made programme had increased the productivity of his business.

Taking the first step into Adult Learning could be your gateway to a whole new lifestyle. Our learners say the informal and friendly atmosphere is encouraging and improves their confidence.

Try your hand at learning to play a musical

Money off!
Are you 65 or older? Then you qualify for a 10% discount on any course

HEALTH AND WELLBEING!

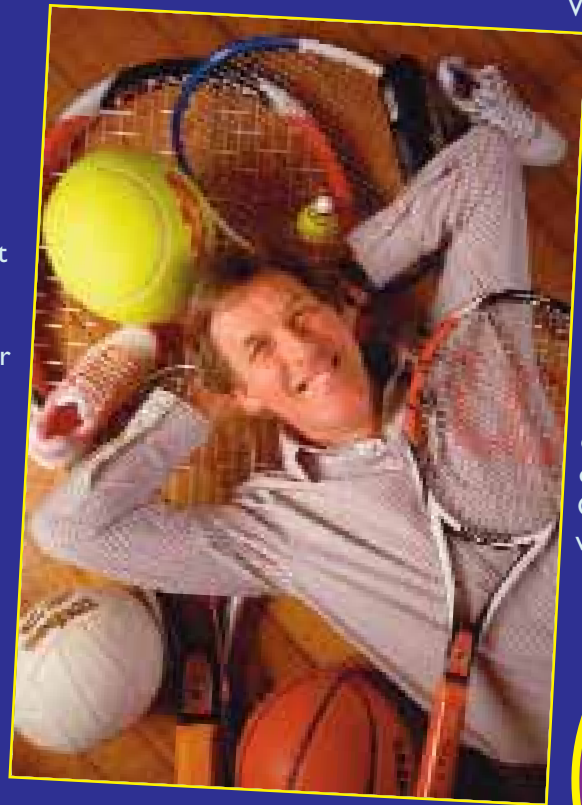
Fantastic... brilliant... life changing... energising... stimulating... superb... these are just some of the words people have used to describe their experiences on Health and Wellbeing courses with West Sussex Adult & Community Learning Service.

You don't have to look far to realise the benefits that participating in stimulating learning and activity can bring. Almost every newspaper, magazine and television programme reminds us of the importance of developing active and healthy lifestyles. What better way to find out more than joining one of over 500 Health and Wellbeing courses available

in the new programme of courses.

Will Pickford, Curriculum Manager for Health and Wellbeing invites you, whatever your ability or experience, to take an ACTIVE part in the new programme of courses. There must be a course just waiting for you to join in... grab your opportunity now... it could change your life!

For further information on the full range of courses offered by the Adult & Community Learning Service visit the website



Fit is fun!
Have a great time, meet new friends and get fit! There are dozens of courses from salsa to Tai Chi, Chairobics to yoga.



Ebay boffin?
Are you addicted to ebay? Or perhaps you want to learn how to use all the buttons on your digital camera? There are courses for both!

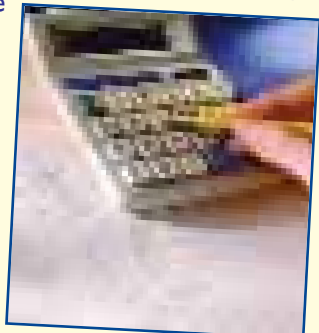


Keep it local
We use over 350 venues across West Sussex - so there's guaranteed to be a class near you!

Sarah's Story

"I couldn't leave school quick enough. But I struggled to get work and the jobs I did were dead end. It never entered my head to do any learning or to get a qualification. Then my mate asked me to go along to a new maths class with her. She needed to get her maths qualification for her National Vocational Qualification (NVQ) at work. Somehow she got me signed up too. I was really scared that first night. In fact I felt quite sick.

It turned out that the tutor and other students were really friendly and I actually began to look forward to going to class each week. I got my Maths qualification and I'm now working as a volunteer in a crèche and really looking forward to helping my daughter with her schoolwork when she is older."



For further information on the full range of courses offered by the Adult & Community Learning Service You can:

Pick up a brochure from Libraries and local Adult & Community Learning Centres

Order a copy online

www.westsussex.gov.uk/adulteducation

Call **0845 075 1009**

You can find all the courses and ENROL ONLINE!