

Seaside 2 - What to wear



© West Sussex County Council Library Service [E000136]

1. People on the beach at Worthing, 1849



© West Sussex County Council Library Service [L000274]

2. Young women on the beach, 1869



© West Sussex County Council Library Service [L000273]

3. Young women in the sea, 1884



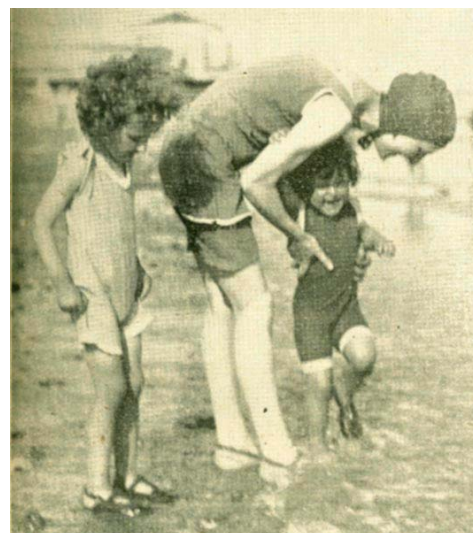
© West Sussex County Council Library Service [N057995]

4. Children on Worthing beach, c1900



© West Sussex County Council Library Service [PC003359]

5. Bathers on Elmer Beach, Bognor Regis, c1925



© West Sussex County Council Library Service [P003340]

6. Woman and children paddle on the beach, Worthing, 1930



© West Sussex County Council Library Service [P002198]

7. Boys on the beach, Worthing, 1930



© West Sussex County Council Library Service
[WSCCLS BOOK_WORTHINGGUIDE_1953_15]

8. Children on Worthing beach, c1951



© West Sussex County Council Library Service
BOOK_WORTHINGGUIDE_1953_09

9. Children paddle in the sea, Worthing, c1952,



© West Sussex County Council Library Service
[BOOK_WORTHINGGUIDE_1955_08]

10. Young ladies on the beach, Worthing, c1952



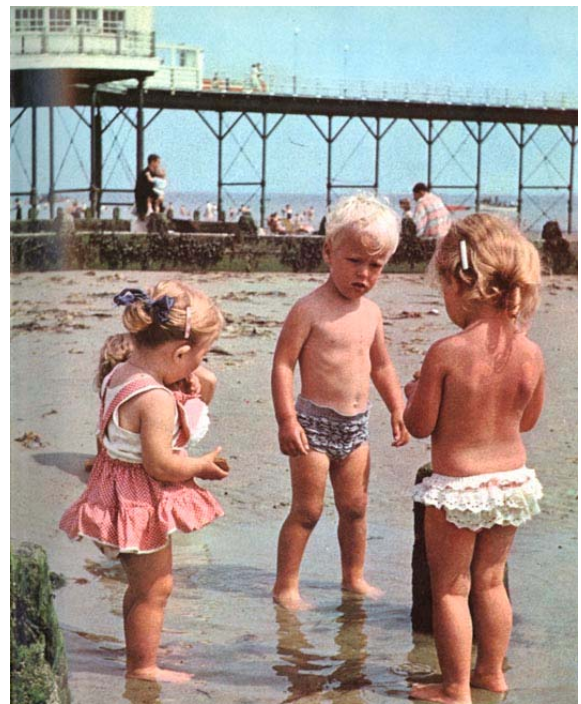
© West Sussex County Council Library Service
[BOOK_CHICHESTERGUIDE_1960_31]

11. Holidaymakers on the beach, East Wittering, c1960



© West Sussex County Council Library Service
[BOOK_WORTHINGGUIDE_1970_15]

12. Children at Brooklands paddling pool, Worthing, c1970



© West Sussex County Council Library Service
[BOOK_BOGNORGUIDE_1968_03]

13. Children on the beach, Bognor Regis, c1967