

## Summary of Changes 3-Transport Road

Source 1. West Street toll gate, Chichester, c1842



© West Sussex County Council Library Service [E000060]

Source 2. South Street, Chichester, c1901



© West Sussex County Council Library Service [PC002729]

Source 3. Cart in Mill Lane,  
Shoreham, c1880



© Marlipins Museum Shoreham [89.5700]

Source 4. Horse-drawn brake,  
Worthing, c1890



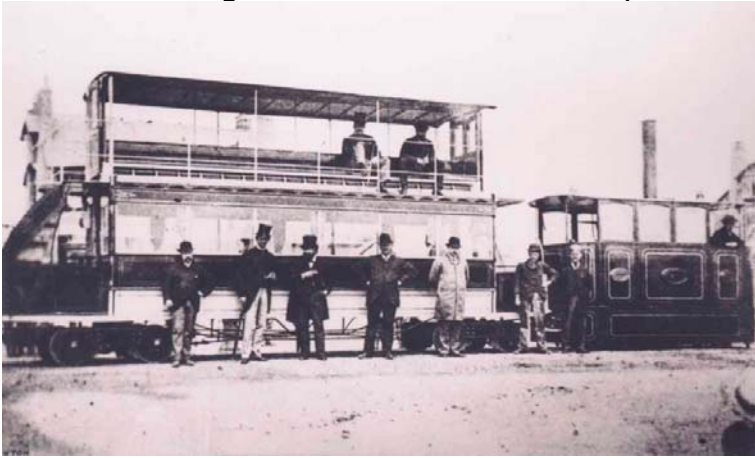
© West Sussex County Council Library Service [P002750]

Source 5. James Town's bus,  
Worthing, c1885



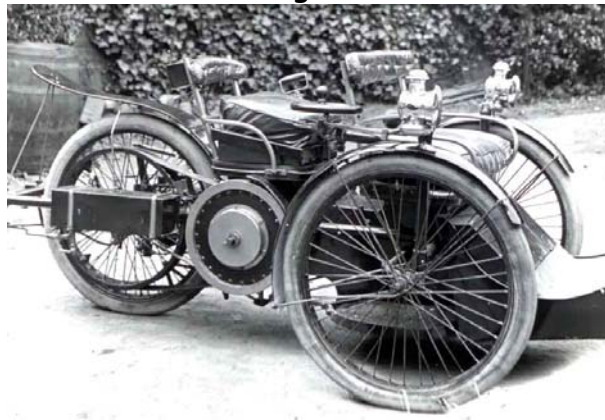
© West Sussex County Council Library Service [N057916]

Source 6. Double-decker tram pulled by steam locomotive, Brighton and District Tramways, 1884



© Marlipins Museum Shoreham [95.2657.8]

Source 7. Three-wheeled belt-driven motor car, Worthing, c1900



© West Sussex County Council Library Service [N0582296]

Source 8. Men ride in an early motor car, Worthing, c1890



© West Sussex County Council Library Service [N057959]