

## Worthing Town Trail: 8. Railway Stations

37a. The first railway station building, c1871



The south side of the building

37b. The enlarged railway station, c1871



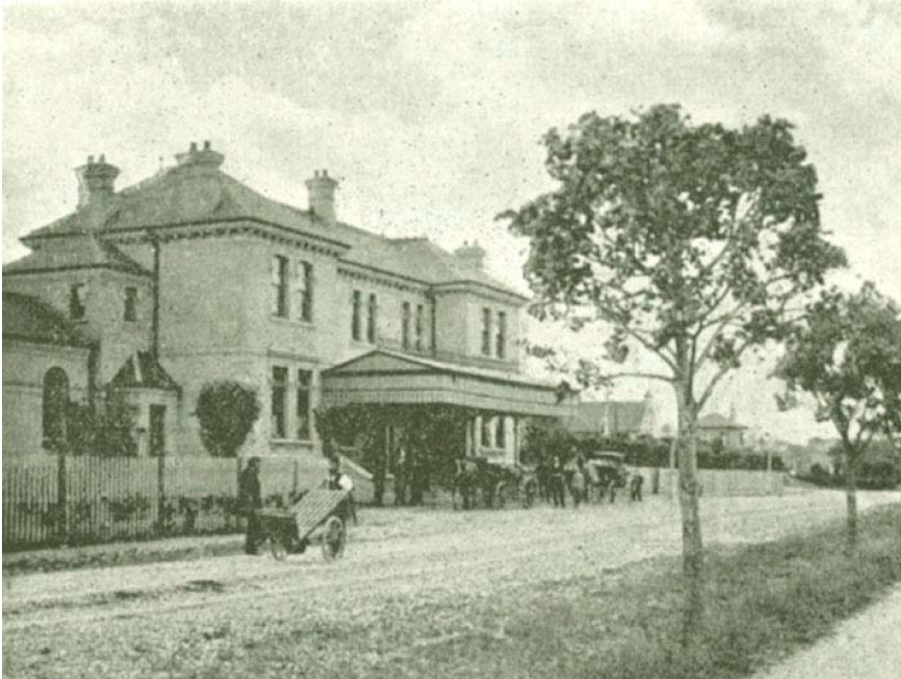
General view looking north west with the new buildings on the left

37c. Part of the station building in 2005



Close view of Victorian ironwork on the west end  
of the south platform

38a. West Worthing station, c1895



Looking north east towards the south and west sides of the station

38b. West Worthing station, 2005



The south side of the station building