

# Wartime West Sussex 1939 – 1945 D-DAY

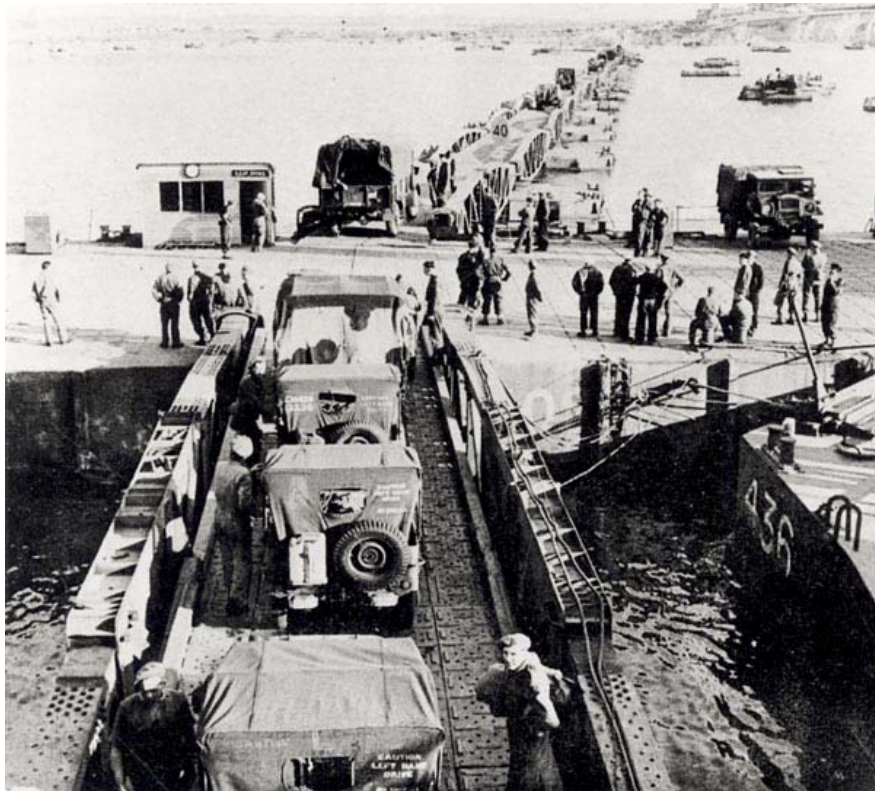
## Mulberry harbour units used in D-Day follow-up landings <sup>1</sup>

Mulberry harbour units being assembled off Pagham



© Frank Lallouette Collection courtesy of Mrs Jeanette Hickman [LAL1434]

Mulberry harbour units being used to bring jeeps ashore at Arromanches



© West Sussex Record Office [PH14198]

<sup>1</sup> For a full account of the construction and deployment of the Mulberry harbours, see Chapter 6 of *D-Day West Sussex* by Ian Greig, Kim Leslie, Alan Readman [WSRO, 2004]