

Transport: Activity 3a - Getting Around Town

CHILDREN'S ACTIVITY SHEET

Source 1a. James Town's first double-decker horse-drawn omnibus, Worthing, c1885



© West Sussex County Council Library Service [N057916]

Source 1b. Close-up detail of 1a.



Source 2a. Later "improved" version of James Town's omnibus, 1897



© West Sussex County Council Library Service [P002742]

Source 2b. Close-up detail of 2a.



Source 3. Single-decker "brake" that ran from Findon to Worthing, c1899



© West Sussex County Council Library Service [N058041]

Transport: Activity 3a - Getting Around Town

Source 4. Timetable for the Worthing omnibus and the Findon brake, 1899

OMNIBUS SERVICE.													S. Ronan's to Broadwater.												
	*	*	+	*	+	*	+	*	+	*	+	*	+	*	+	*	+	*	+	*	+	*	+		
S. Ronan's... ..	9.45	10.15	10.45	11.15	11.45	12.15	12.45	1.15	1.45	2.15	2.45	3.15	3.45	4.15	4.45	5.15	5.45	6.15	7.15						
Heene Church ...	9.47	10.17	10.47	11.17	11.47	12.17	12.47	1.17	1.47	2.17	2.47	3.17	3.47	4.17	4.47	5.17	5.47	6.17	7.17						
Baths	9.51	10.21	10.51	11.21	11.51	12.21	12.51	1.21	1.51	2.21	2.51	3.21	3.51	4.21	4.51	5.21	5.51	6.21	7.21						
Burlington Hotel	9.53	10.23	10.53	11.23	11.53	12.23	12.53	1.23	1.53	2.23	2.53	3.23	3.53	4.23	4.53	5.23	5.53	6.23	7.23						
Pier.....	9.58	10.28	10.58	11.28	11.58	12.28	12.58	1.28	1.58	2.28	2.58	3.28	3.58	4.28	4.58	5.28	5.58	6.28	7.28						
Post Office...9. 0	10. 0	10.30	11. 0	11.30	12. 0	12.30	1. 0	1.30	2. 0	2.30	3. 0	3.30	4. 0	4.30	5. 0	5.30	6. 0	6.30	7.30						
Ry. Bridge...9. 5	10. 5	10.35	11. 5	11.35	12. 5	12.35	1. 5	1.35	2. 5	2.35	3. 5	3.35	4. 5	4.35	5. 5	5.35	6. 5	6.35	7.35						
Broadwater	9.15	10.15	10.45	11.15	11.45	12.15	12.45	1.15	1.45	2.15	2.45	3.15	3.45	4.15	4.45	5.15	5.45	6.15	6.45	7.45					
* 'Busses go to Cricketers' Arms.													† 'Busses go to East End of Broadwater.												
Broadwater to S. Ronan's.																									
Broadwater	9.15	10.15	10.45	11.15	11.45	12.15	12.45	1.15	1.45	2.15	2.45	3.15	3.45	4.15	4.45	5.15	5.45	6.15	6.45	7.45					
Ry. Bridge...	9.25	10.25	10.55	11.25	11.55	12.25	12.55	1.25	1.55	2.25	2.55	3.25	3.55	4.25	4.55	5.25	5.55	6.25	6.55	7.55					
Post Office...	9.30	10.30	11. 0	11.30	12. 0	12.30	1. 0	1.30	2. 0	2.30	3. 0	3.30	4. 0	4.30	5. 0	5.30	6. 0	6.30	7. 0	8. 0					
Pier	9.32	10.32	11. 2	11.32	12. 2	12.32	1. 2	1.32	2. 2	2.32	3. 2	3.32	4. 2	4.32	5. 2	5.32	6. 2		7. 2						
Burlington...	9.37	10.37	11. 7	11.37	12. 7	12.37	1. 7	1.37	2. 7	2.37	3. 7	3.37	4. 7	4.37	5. 7	5.37	6. 7		7. 7						
Baths	9.39	10.39	11. 9	11.39	12. 9	12.39	1. 9	1.39	2. 9	2.39	3. 9	3.39	4. 9	4.39	5. 9	5.39	6. 9		7. 9						
Heene church	9.43	10.43	11.13	11.43	12.13	12.43	1.13	1.43	2.13	2.43	3.13	3.43	4.13	4.43	5.13	5.43	6.13		7.13						
S. Ronan's ...	9.45	10.45	11.15	11.45	12.15	12.45	1.15	1.45	2.15	2.45	3.15	3.45	4.15	4.45	5.15	5.45	6.15		7.15						
On Saturdays the 'Busses run an hour later each way.																									
To WORTHING												To FINDON													
From Gun Inn, Findon	
" " "	
" " "	
" " "	

A Brake also leaves FINDON POST OFFICE at 8.45 a.m. for WORTHING STATION. And in the Evening—Findon at 6.5; Worthing Station at 6.45.

LONG'S WORTHING GUIDE.

© West Sussex County Council Library Service [Long 1899 E300101937]

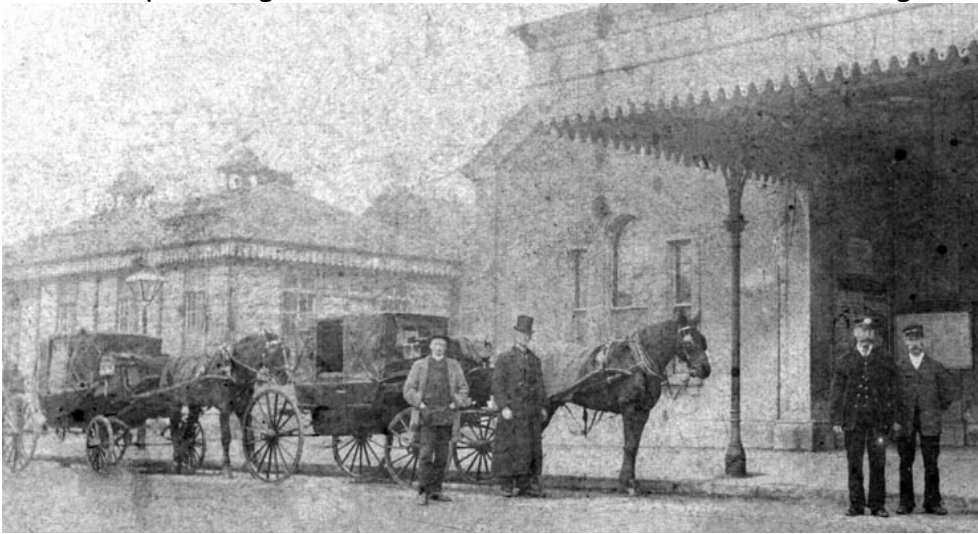
Source 5. A hackney carriage, bath chairs and donkey cart wait near Worthing pier, 1880



© West Sussex County Council Library Service [P002743]

Transport: Activity 3a - Getting Around Town

6-Hackney carriages and their drivers wait outside a building in Worthing, c1880



© West Sussex County Council Library Service [P002753]

Source 7. A hansom cab in Worthing, c1900



© West Sussex County Council Library Service [P002751]

Source 8. Details from a list of hackney carriage fares, 1892

Hackney Carriages, &c.	
FARES FOR HACKNEY CARRIAGES, &c., IN THE DISTRICT OF WORTHING.	
Carriage drawn by two horses, or by one horse.	Description of Carriage.
1ST CLASS.	
Carriage drawn by one horse or by a pony or ponies, mule or mules.	
2ND CLASS.	
Carriage drawn or propelled by hand.	
3RD CLASS.	
Carriage drawn by two asses, or by one ass.	
4TH CLASS.	
Carriage drawn by two goats or one goat.	
5TH CLASS.	

© West Sussex County Council Library Service [Long 1892 XX00026462]

Transport: Activity 3a - **Getting Around Town**

1-Look at sources 1, 2, 3, and 4. The timetable mentions "omnibus" and "brake". What do we call this type of transport today?

--

2-The man at the back in source 1b, and the man in source 3, are holding something in their left hands. What do you think they are and what were they used for?

--

3-How would passengers get to the top deck in sources 1 and 2?

--

4-On the left of and underneath the main timetable, services from Findon are listed. Where in Worthing do most of them go?

--

5-What is different and what is the same about the sort of transport shown in sources 1, 2, 3 and 4 in Victorian times and today?

Same	Different

Transport: Activity 3a - **Getting Around Town**

6-Look at sources 5, 6, 7 and 8. The list of fares mentions "hackney carriages", and source 7 shows a "hansom cab". What do we call this kind of transport today?

--

7-Outside which building do you think the carriages in source are 6 waiting?

--

8-What are the drivers in sources 6 and 7 (standing next to his horse) both wearing?

--

9-From the list of fares: what other animals apart from horses were used by hackney carriages and other forms of hired transport?

--

10-What is different and what is the same about the sort of transport shown in sources 5,6, 7, and 8 in Victorian times and today?

Same	Different