

Car Parking Update

Gary Wallace - Head of Car Parks

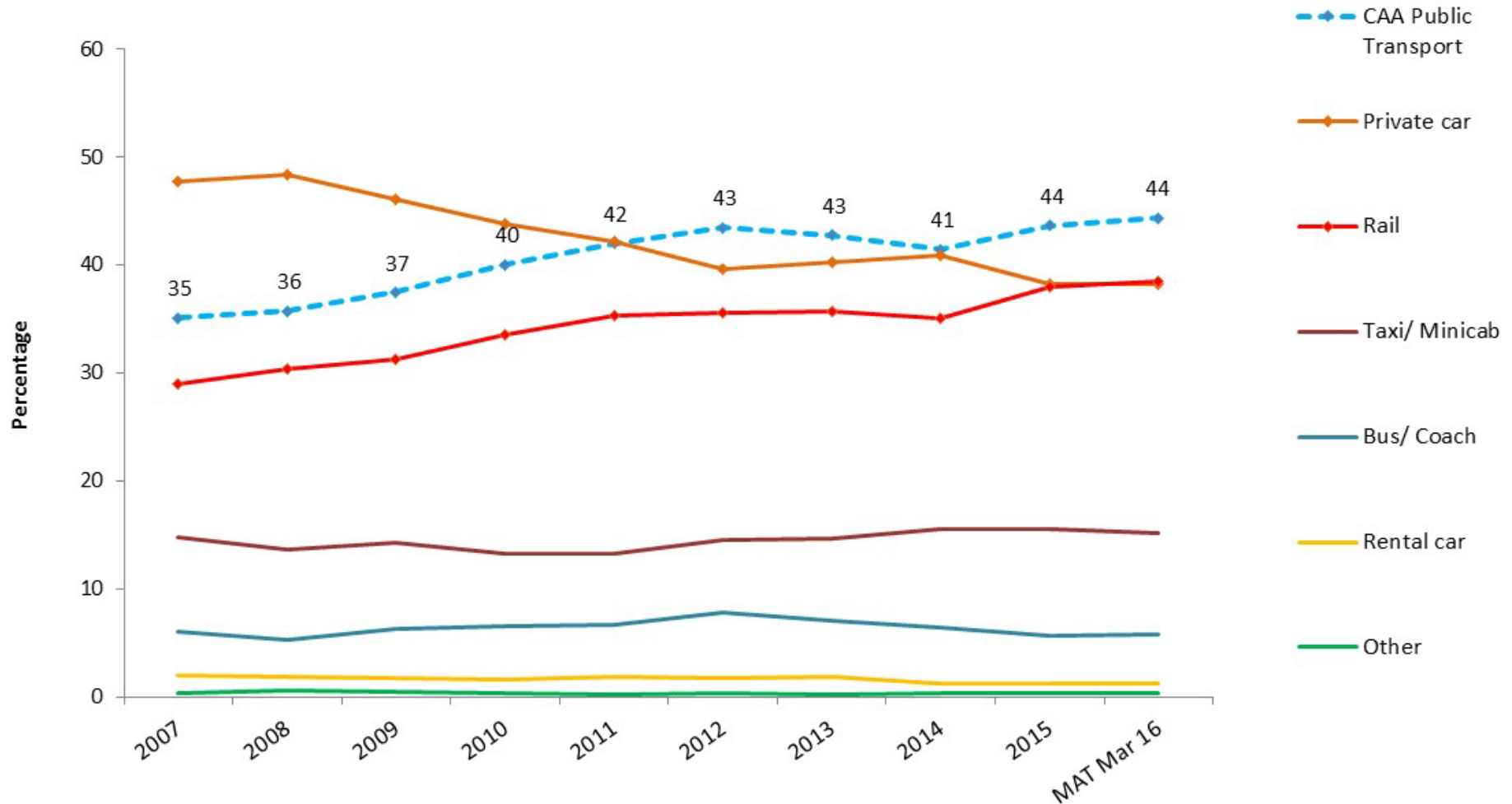
GATCOM 26 Jan 2017



Mode share for public transport continue to increase, vehicle access to the airport is declining



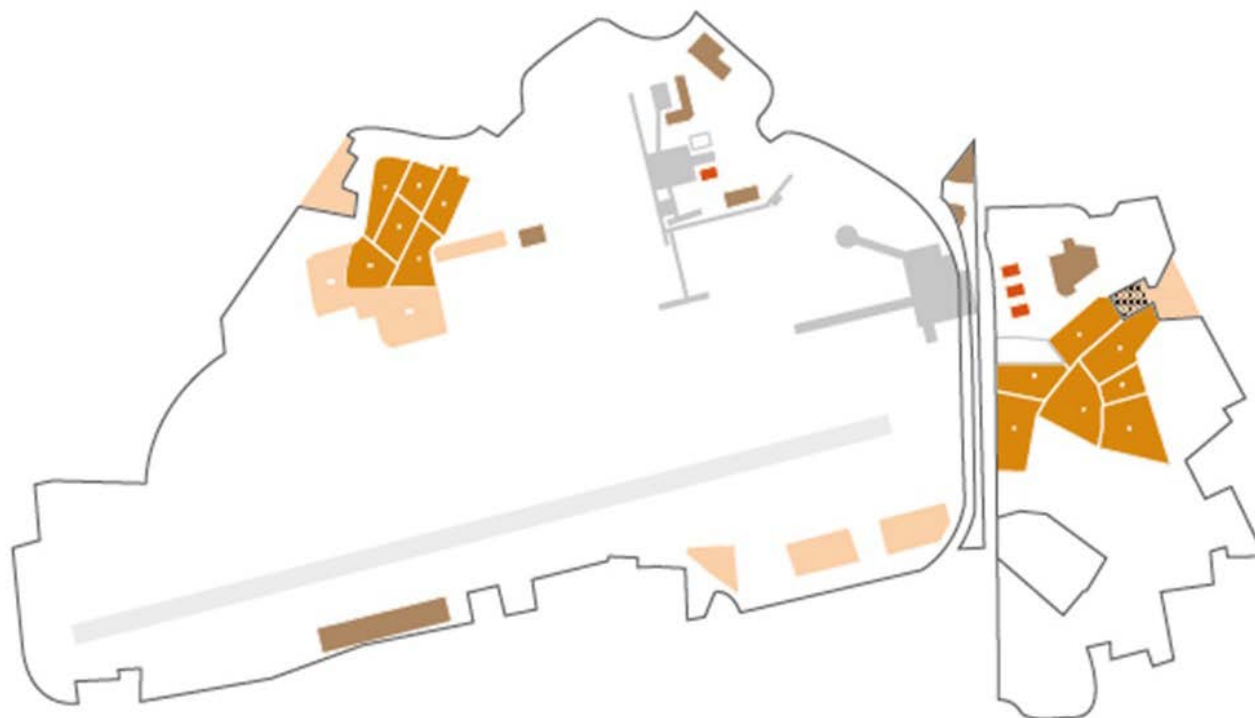
CAA: MODAL SHARE %



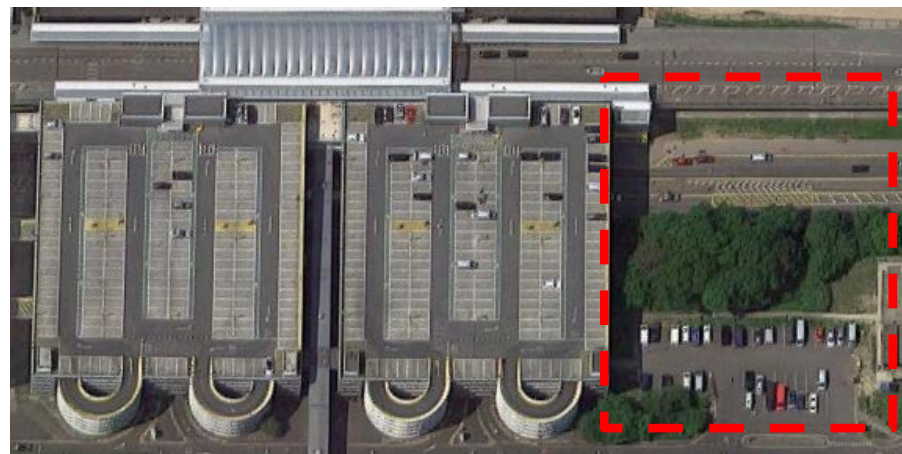
Since GIP ownership, our parking capacity growth has exceeded growth in demand



	2010	2016	Change
Passengers	31.6m	42.3m	34%
“Parking pax”	13.8m	16.2m	17%
Gatwick spaces	32,640	39,224	20%



We have earmarked £150m of investment for to deliver 9,000 extra spaces over next 5 years





Policy GAT3: Gatwick Airport Related Parking

The provision of additional or replacement airport parking will only be permitted within the airport boundary.

All new proposals must be justified by a demonstrable need in the context of proposals for achieving a sustainable approach to surface transport access to the airport.

- Interim car parking strategy - February 2017
- Consultation on Capital Investment Program Feb-Mar 2017
- Full car park strategy will be published alongside revised Airport Surface Access Strategy following the Masterplan revision

The approved operator scheme has significantly reduced impact of off-airport parking on community



Airport Parking & Hotels



Cophall Parking
Gatwick

Parking with a smile

purpleparking
AIRPORT PARKING ACROSS THE UK



Maple Manor
Parking
Since 1992



ace
PARKING
MEET & GREET

help-me-park   

Gatwick Airport Meet and Greet Parking - Est. 2005

ALL TERMINALS

JVP

JUST VALET PARKING

Gatwick Airport Approved

ALL TERMINALS

ABC 
meet and greet

Gatwick Airport Approved



i love meet and greet
passionate about airport parking 



TUDOR ROSE
AIRPORT PARKING

established in 1992

YOUR LONDON AIRPORT
Gatwick

YOUR LONDON AIRPORT *Gatwick*

APPROVED OFF-AIRPORT PARKING SCHEME

We strongly recommend that when using an Off-Airport Meet & Greet company that you make sure they are a licenced member of the Gatwick Airport Approved Off-Airport Parking scheme.

Companies on this scheme have been approved by:

- Gatwick Airport
- Buy with Confidence (Trading Standards)
- Park Mark (British Parking Association)



For more details on the scheme please visit:
www.gatwickairport.com/approvedoperators

If you have any problems that cannot be resolved by the Meet & Greet company directly, please report the Issue to Trading Standards via:
www.westsussex.gov.uk/tsreport

You can also report any criminal Issues to Sussex Police by calling 101 or report on-line via:
www.sussex.police.uk



YOUR LONDON AIRPORT
Gatwick

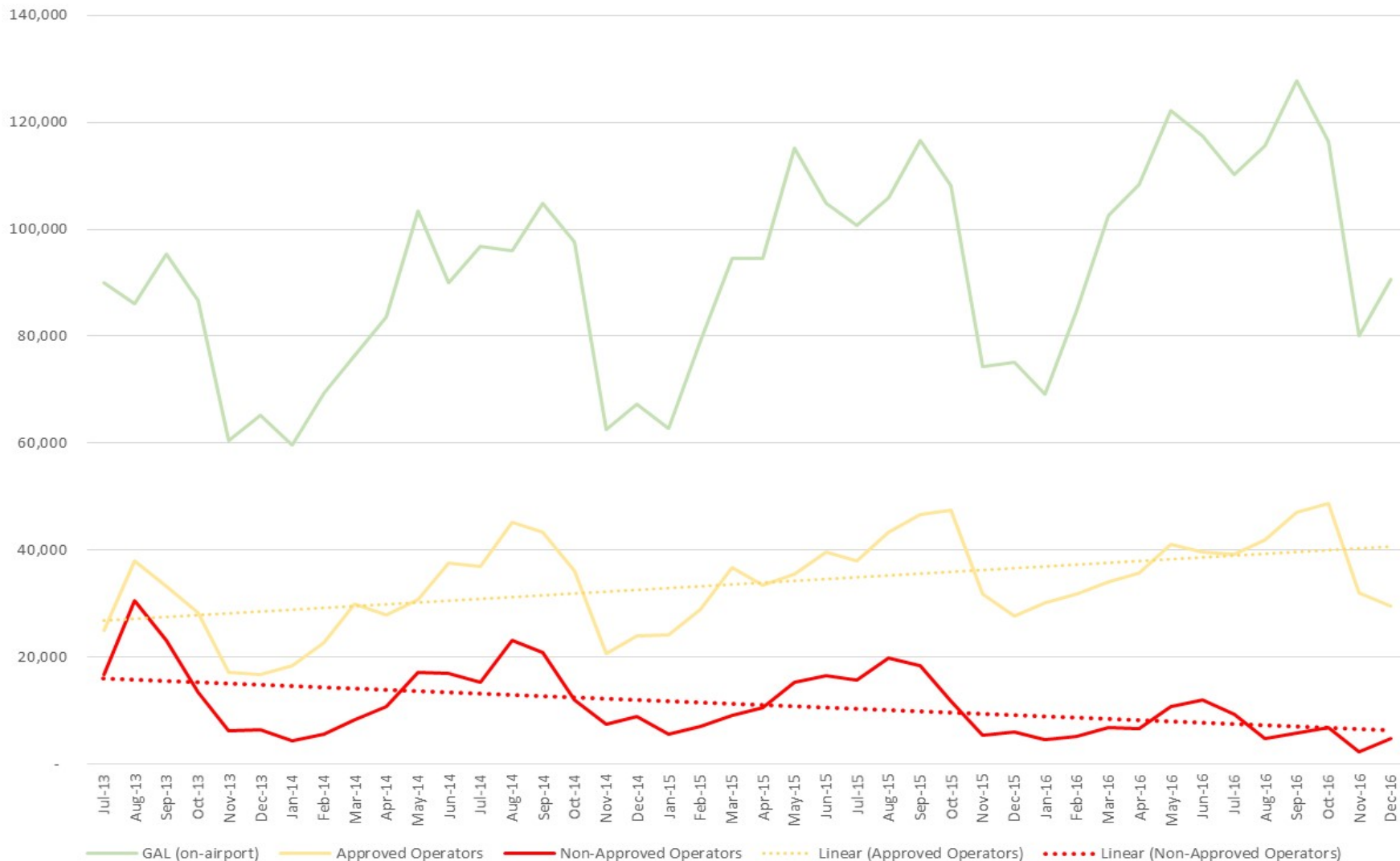
YOUR LONDON AIRPORT
Gatwick

The approved operator scheme has been recognised by the CAA and referenced by various media outlets

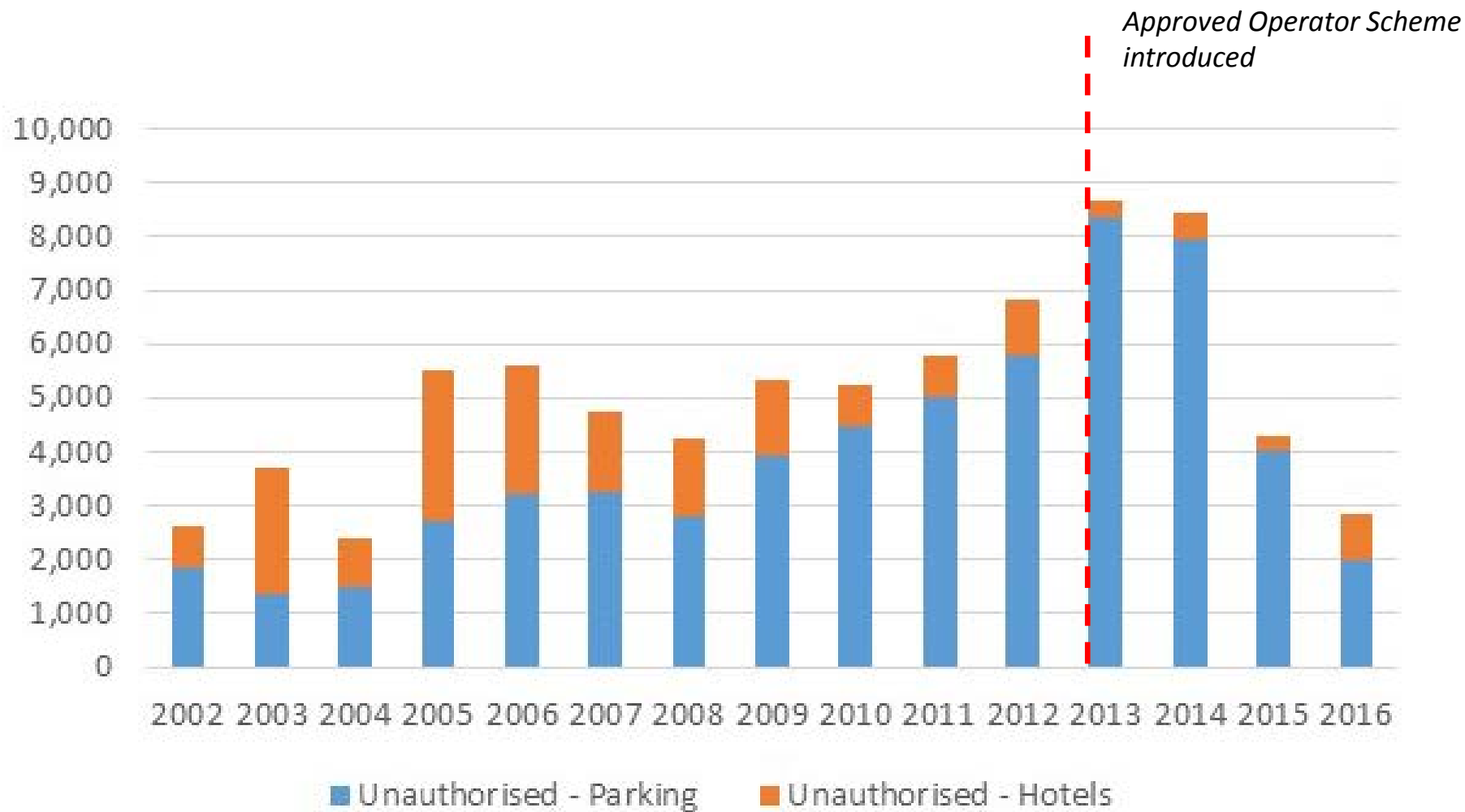


- “You’ll find it easy to [check suppliers] if you’re flying in and out of Gatwick, as there’s a list of approved suppliers on the airport’s website”.
 - *BBC 1, Rip Off Britain: Holidays, 16th January 2017*
- “We suggest that airport operators consider a form of accreditation for independent parking operators, similar to that offered by Gatwick Airport.”
 - *CAA Advisory Letter to Airports 20th Dec 2016*
- Gatwick Airport has a list of approved “meet and greet operators” for off-airport parking who passengers are advised to use. Gold Parking is not one of them.
 - *Surrey Mirror 22 May 2014*
- “Gatwick Airport also runs an approved off-airport parking scheme through which we endorse other parking companies in whom we have confidence.”
 - *BBC News 21 January 2016*

Transactions from non-approved operators are declining



This has contributed to a reduction in unauthorised parking in the local area

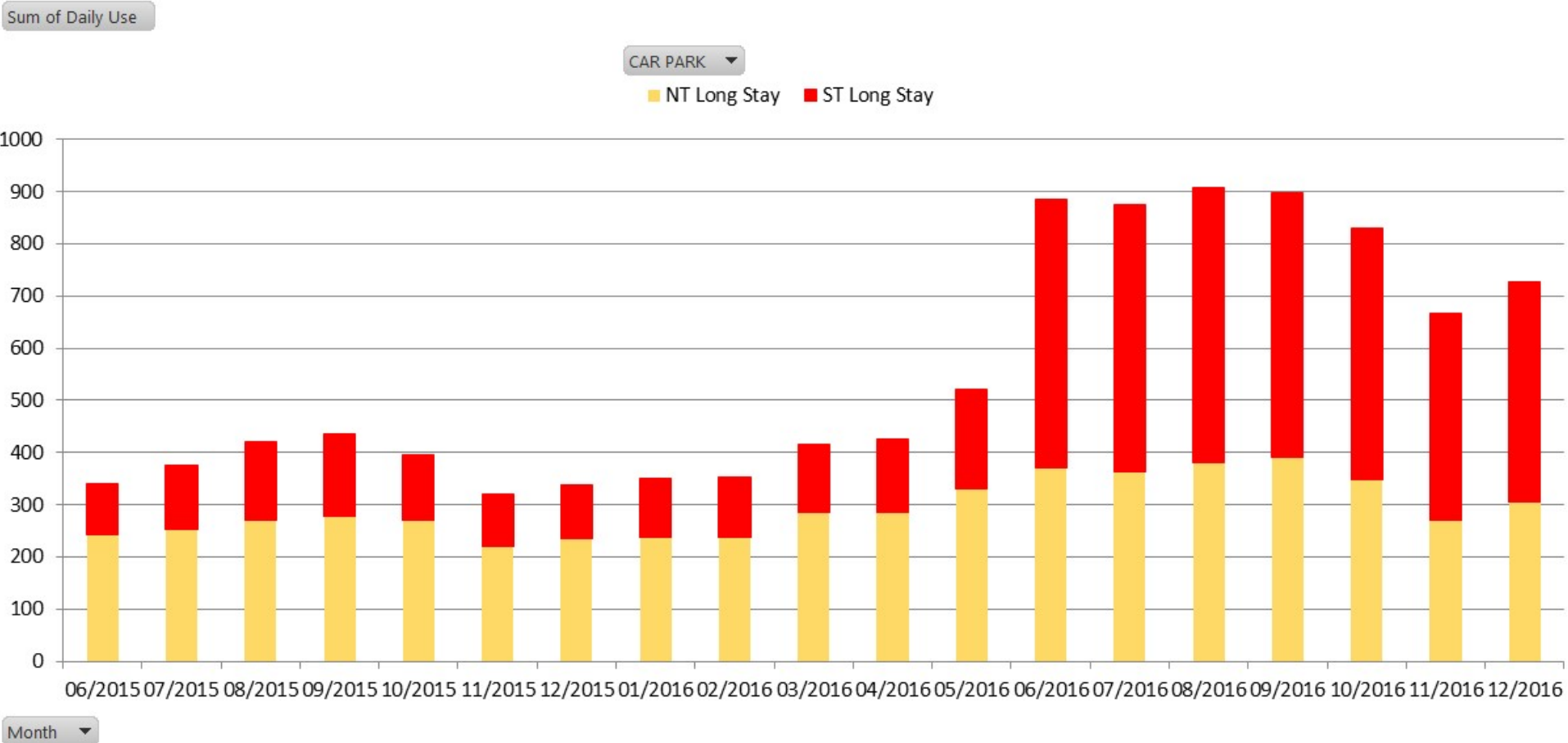


It remains free to drop-off on the forecourt,
with a 2 hours free pick-up option in the
long-stay car park



	Drop-Off	Pick-Up	Notes
Gatwick	Free	£3.50	<i>Free pick-up in long-stay</i>
Heathrow	Free	£3.80	
Stansted	£3.00	£3.60	<i>Free drop-off in long-stay</i>
Manchester	Free	£3.50	
Luton	£3.00	£8.00	<i>Free drop-off in long-stay</i>
Glasgow	£2.00	£2.00	<i>From April 17</i>
Edinburgh	£1.00	£3.90	

We now see ~900 cars / day using our 2 hrs free in the long-stay car parks



We continue to offer 20 minutes free parking in short-stays for local residents



- At the airport
- Live flights
- To & from
- Parking**
- Hotels
- Plan & book flights
- myGatwick

YOUR LONDON AIRPORT
Gatwick

[NORTH TERMINAL PARKING](#) [SOUTH TERMINAL PARKING](#) [PREMIUM PARKING](#) [OTHER PARKING](#) [CAR PARK PRICES](#)

RESIDENTS DISCOUNTED PARKING SCHEME

[HOME](#) > [PARKING](#) > [OTHER PARKING](#) > [RESIDENTS DISCOUNTED PARKING SCHEME](#)

At Gatwick, we're passionate about being a good neighbour

We've launched a really helpful and easy to use discounted parking scheme for our local residents. The scheme enables you to accompany your friends and loved ones to the airport to see them off and return to collect them with no extra hassle of parking fees.

This scheme is open to all residents of postcodes RH, BN, TN & GU.



[Resident parking](#)

[Discount scheme FAQs](#)

A small fee of £20 entitles a household to 250 visits to our Short Stay car parks of 20 minutes or less, per year.

Up to three vehicle number plates can be registered per address allowing the 250 visits to be shared amongst the family (only 2 changes allowed per annum).

OUR LONDON AIRPORT
Gatwick

As well as other special offers for the community



- Home
- Our car parks**
- Park & Stay
- Extras
- At the airport
- Help & FAQs
- Manage booking

OFFICIAL AIRPORT PARKING
Gatwick

NORTH TERMINAL PARKING SOUTH TERMINAL PARKING PARKING OPTIONS ▾ PASSENGER COLLECTION

Book parking →

Entry date



Exit date



Select Terminal | ▾

→ Get quote

EVENING SPECIAL PARKING

HOME > OUR CAR PARKS > PARKING OPTIONS > EVENING SPECIAL PARKING

Night out in London? Local to Gatwick Airport? Leave your car in the Short Stay car park and jump on the fast train to the city! It's a convenient, low-cost way to get to the heart of the action as quickly as possible.

Whether you're heading to the theatre, out for dinner with friends, or going to a gig, take advantage of Evening Special parking at Gatwick. The stress of getting home is removed from the evening and you can concentrate on enjoying yourself.

- 30-minute Gatwick Express to London Victoria gets you to the centre of London quickly.
- 50% off the standard price with a special flat rate of £12.50.
- Covered access to the station so you can stay protected from the elements.
- Park minutes from the platform in the South Terminal of Gatwick Airport.

Book evening special

Faster trains than nearby stations

It takes just 30 minutes to get from Gatwick to London Victoria via the Gatwick Express train service. From there, you can travel on the Underground to anywhere in London.

Don't let the challenge of finding a parking space in the capital spoil your night out. Our flat rate Evening Special parking is just **£12.50**, half the usual price. Park for as long as you like between the hours of 5pm and 2am, with plenty of time to get home from the city. There's covered access to the station so no need to worry if it's raining!

Half price – only available when you book online



Short stay

Whether you're taking a weekend break or just picking someone up, the Short Stay car park is an easy and convenient option.

**It's official.
You can't park closer.**

Gatwick has a wide range of parking options. Save money when you pre-book direct with Official Gatwick Parking.

→ Learn more

YOUR LONDON AIRPORT
Gatwick

And we continue to invest in the passenger experience



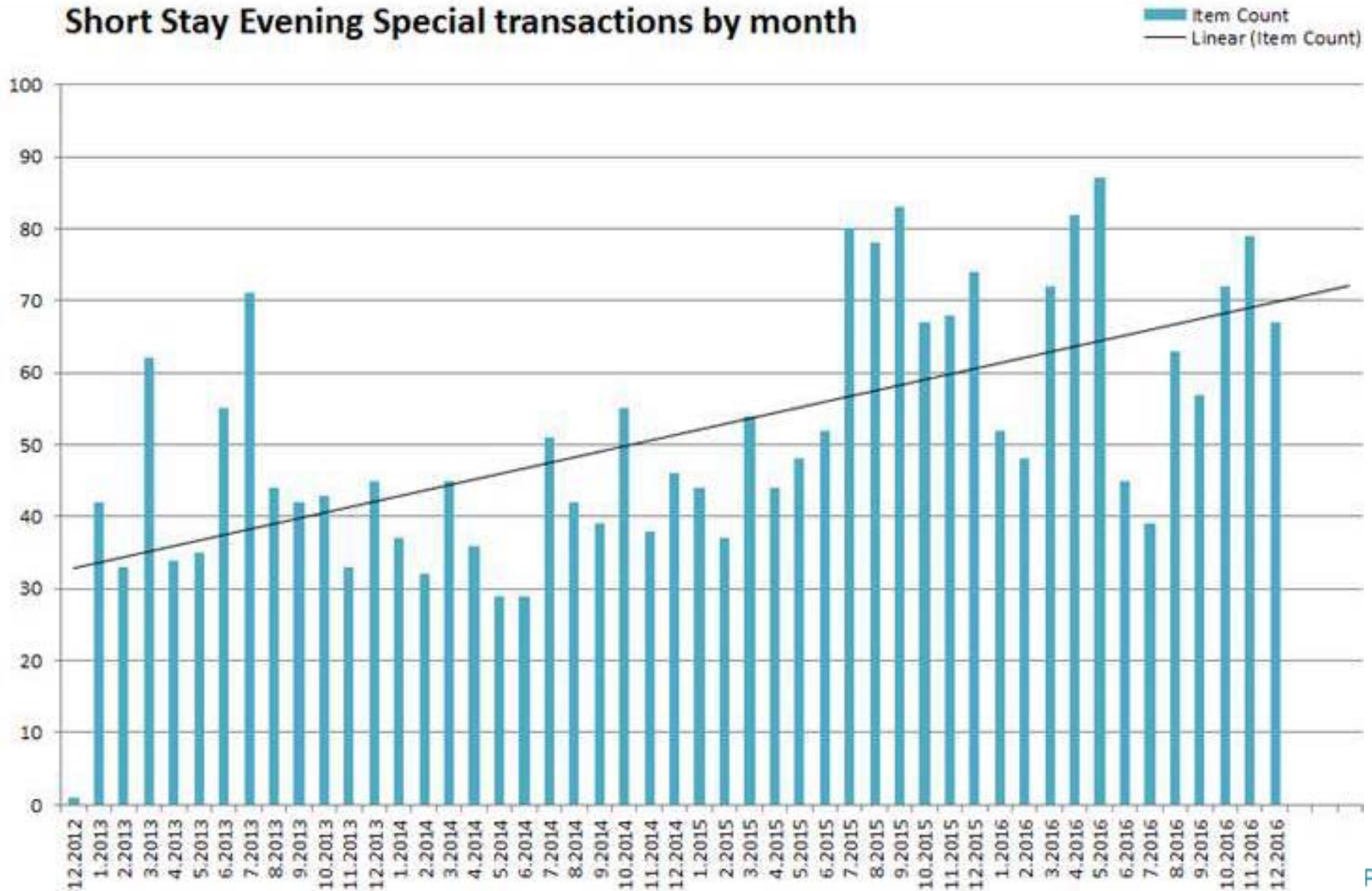
Appendix



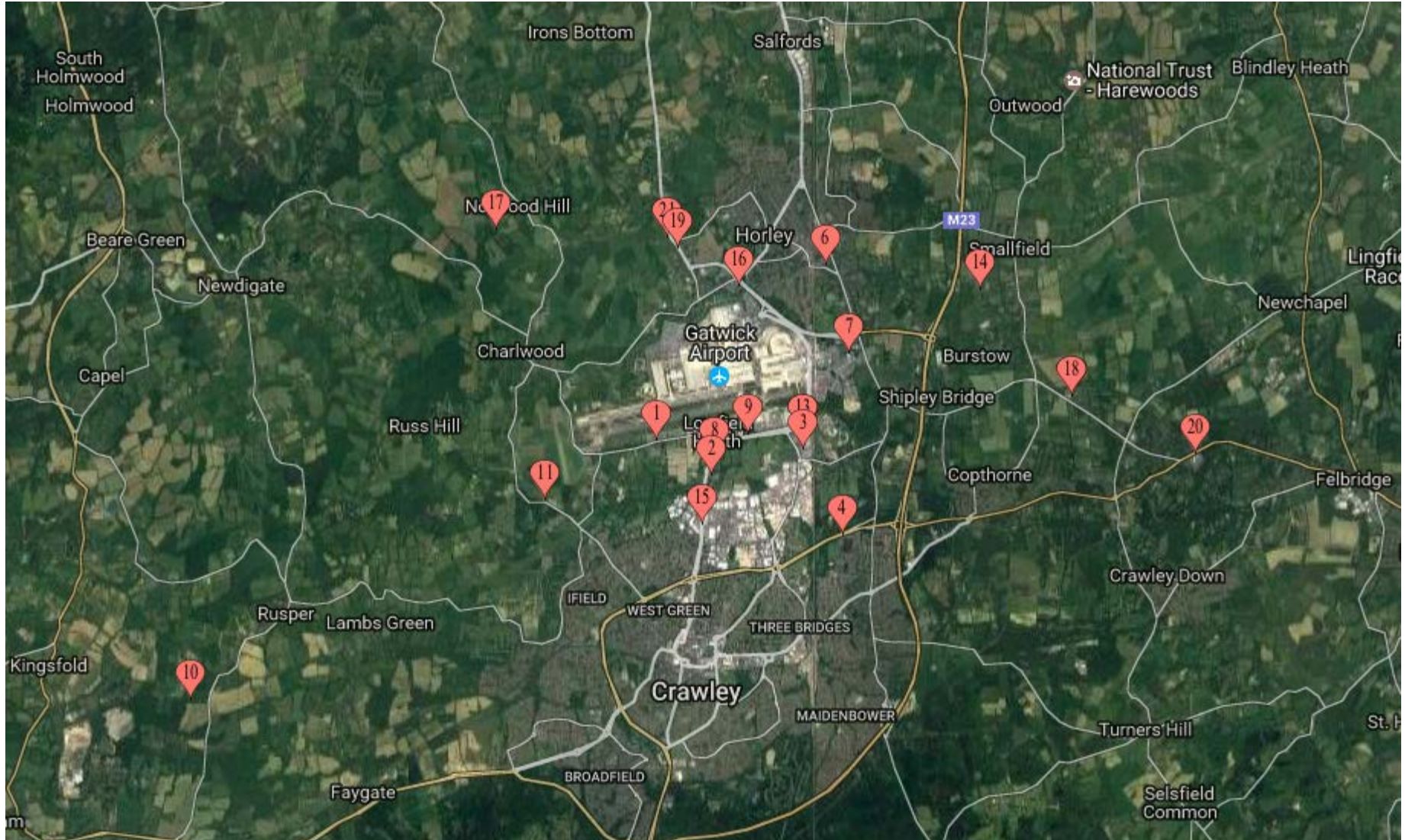
Evening special sales



Short Stay Evening Special transactions by month



Location of approved operator storage sites



Decode of approved operator sites



1 PP - Bcp Airport Parking,
4500
Spaces
Charlwood Rd,
Lowfield Heath,
Crawley RH11 0QB,
UK

2 Ace P - London Road,
100
spaces
Lowfield Heath,
Crawley RH10 9ST,
United Kingdom

3 Ace P - Spectrum House,
250
Spaces
Beehive Ring Rd,
Crawley, Gatwick
RH6 0LG, UK

4 MM - Oriel Cl, Crawley
300
Spaces
RH10 3PH, UK

5 MM - Copthorne, Crawley
500
Spaces
RH10 3HZ, UK

6 MM - The Grove, Horley
380
Spaces
RH6 9HA, UK

7 MM - Gatwick Airport
147
Spaces
(LGW), Buckingham
Gate, Horley,
Gatwick RH6 ONT,
UK

8 MM - London Rd, Lowfield
442
Spaces
Heath, Crawley
RH10 9SW, UK

9 MM - Hydehurst Cottage,
350
Spaces
London Rd, Lowfield
Heath, Crawley
RH10 9SW, UK

10 MM - Green Ln, Horsham
600
Spaces
RH12 4PP, UK

11 HMP - Charlwood Rd,
400
Spaces
Crawley RH11 0JY,
UK

12 HMP - 2 City Place,
240
Spaces
Beehive Ring Road,
London Gatwick
Airport, Gatwick RH6
0PA, United
Kingdom

13 HMP - City Place, Beehive
400
Spaces
Ring Rd, Crawley,
Gatwick RH6 0PA,
UK

14 HMP - Leylands Car Park,
220
Spaces
Broadbridge Lane,
Smallfield RH6 9RF,
United Kingdom

15 ILMG - London Rd, Crawley
120
Spaces
RH10, UK

16 ILMG - Povey Cross Rd,
680
Spaces
Horley, Gatwick RH6
0BE, UK

17 ILMG - Norwood Hill, Horley
200
Spaces
RH6 0ET, UK

18 Cophall Effingham Rd,
Farm - Copthorne, Crawley
1300
Spaces
RH10 3HZ, UK

19 TR - Hookwood Park,
450
Spaces
Reigate Rd, Horley,
Gatwick RH6 0HQ,
UK

20 APH - Snow Hill, Felbridge,
3471
Spaces
Crawley RH10 3EQ,
UK

21 APH - Westlands Farm,
1486
Spaces
Horley RH6 0HQ,
UK

Summary of pricing policy



- Ensure spaces remain available for all customers who wish to park without pre-booking (both those flying, and dropping off / picking up)
- Ensure customers who pre-book receive a discount vs. those who turn up on the day
- Ensure car park spaces are priced “to fill” the car parks (in busy periods)
- Incentivise valet parking in peak season as more space efficient

2010 - Public Car Parking Spaces



Terminal	Product	Spaces	Comments
North	Short-Stay	963	MSCP 5 only (MSCP 6 opened Mar 2011)
	Long Stay North	6,363	
	Summer Special	5,881	
	Holiday Parking	1,800	Operated as a separate product
	Valet Storage	775	Flying Pan storage site
South	Short-Stay	2,822	MSCP 1/2/3 + High-sided /Commuter/Coach Park
	Long Stay South	8,906	
	Long Stay Plus	4,460	
	Valet Storage	670	
Total		32,640	

2016 - Public Car Parking Spaces



Terminal	Product	Spaces	Comments
North	Short-Stay	1,834	MSCP 6 opened Mar 2011. Excludes floors used for Valet product.
	Long Stay North	6,266	Excludes 'zone T' (counted as Summer Special)
	Summer Special	5,956	See above. Only storage space that is part of Summer Special site is counted here, other storage sites are included under "Valet".
South	Short-Stay	2,662	Excludes floors used for Valet product.
	Long Stay South	9,422	Excludes H zone (used for Valet storage).
	Long Stay Plus	0	Product closed in late 2011.
Valet	Valet North & South	13,084	Includes all storage sites used for Valet product: Flying Pan, MA01, Holiday Parking, Valet South (old Long Stay Plus), zone H of Long Stay South and staff car park Z.
Total		39,224	

2016 Staff Parking Capacities



▪ X	2346	
▪ Y	952	
▪ B	440	
▪ H	1177	
▪ M	458	
▪ W	122	
▪ L	368	
▪ T	16	
▪ V	315	
▪ Total		6194

Where do our customers come from?



Booking data refers to forward bookings in system as @ 4 June 14 – will be weighted to June to September
Taxi fares refer to 2-way Uber price to key locations