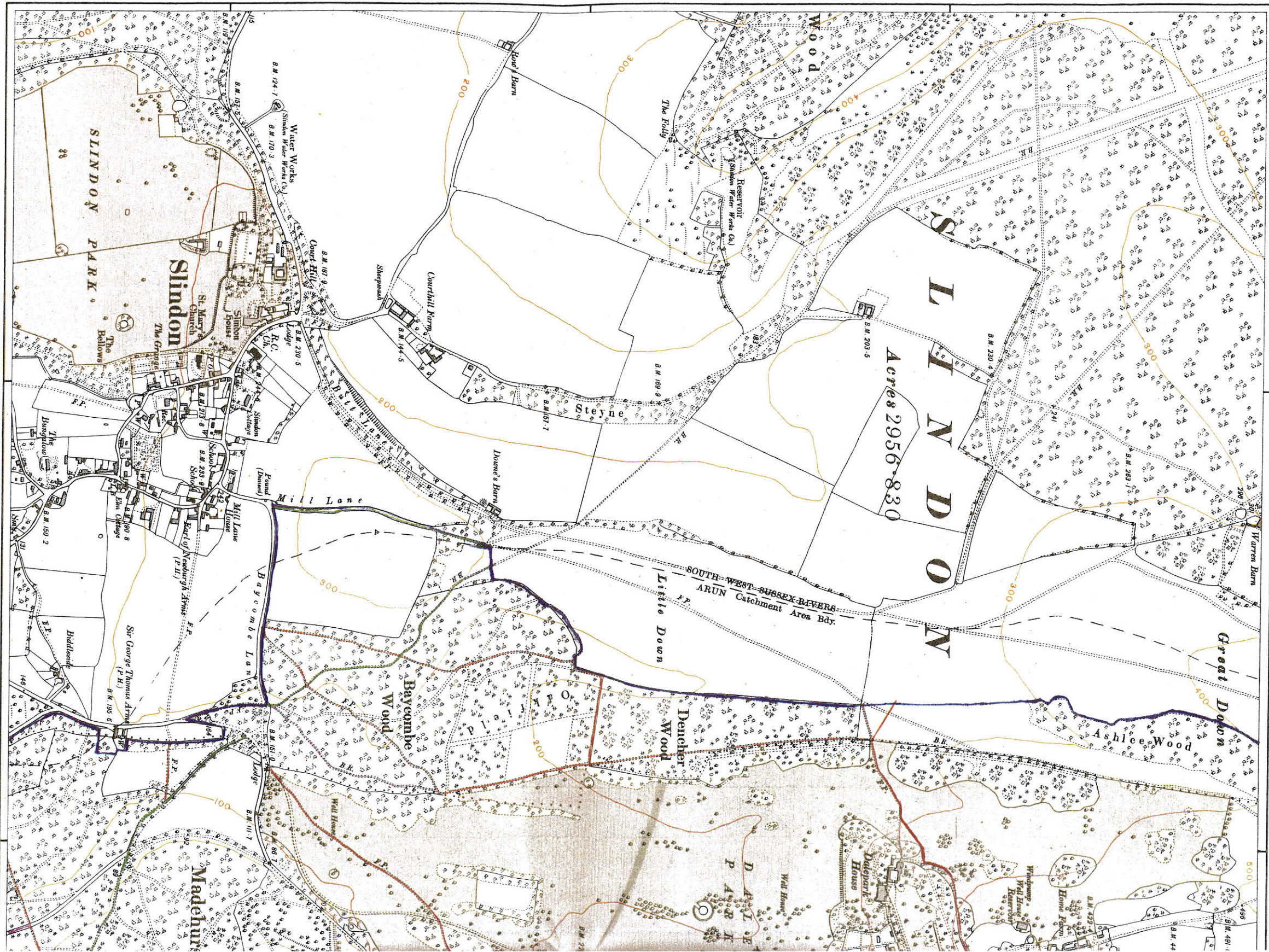


North Wood SOUTH DOWNS

EDITION SOUTH WEST XL



Public FOOTPATH 30"  
 BRIDLE PATH  
 Limits of Estate MARKED TRAIL

Surveyed in 1874. Revised in 1910.  
 Reports: 100/28, 100/29, 50/29,  
 100/32, 100/34, 150/27, 800/38. CHARACTERISTICS AND SYMBOLS.

- County Boundary: - - - - -
  - Parliamentary Division Boundary: - - - - -
  - Union Boundary: - - - - -
  - Rural District Boundary: - - - - -
  - Parish Boundary: - - - - -
  - Catchment Area Boundary: - - - - -
- Indicates size of: +  
 Arrow showing direction of flow of water: →  
 Instrumental contours: ————  
 Sketch contours: - - - - -  
 Trigonometrical Station: ▲

The Catchment Area Boundaries are administrative ones decided by the Minister of Agriculture and Fisheries.

Price

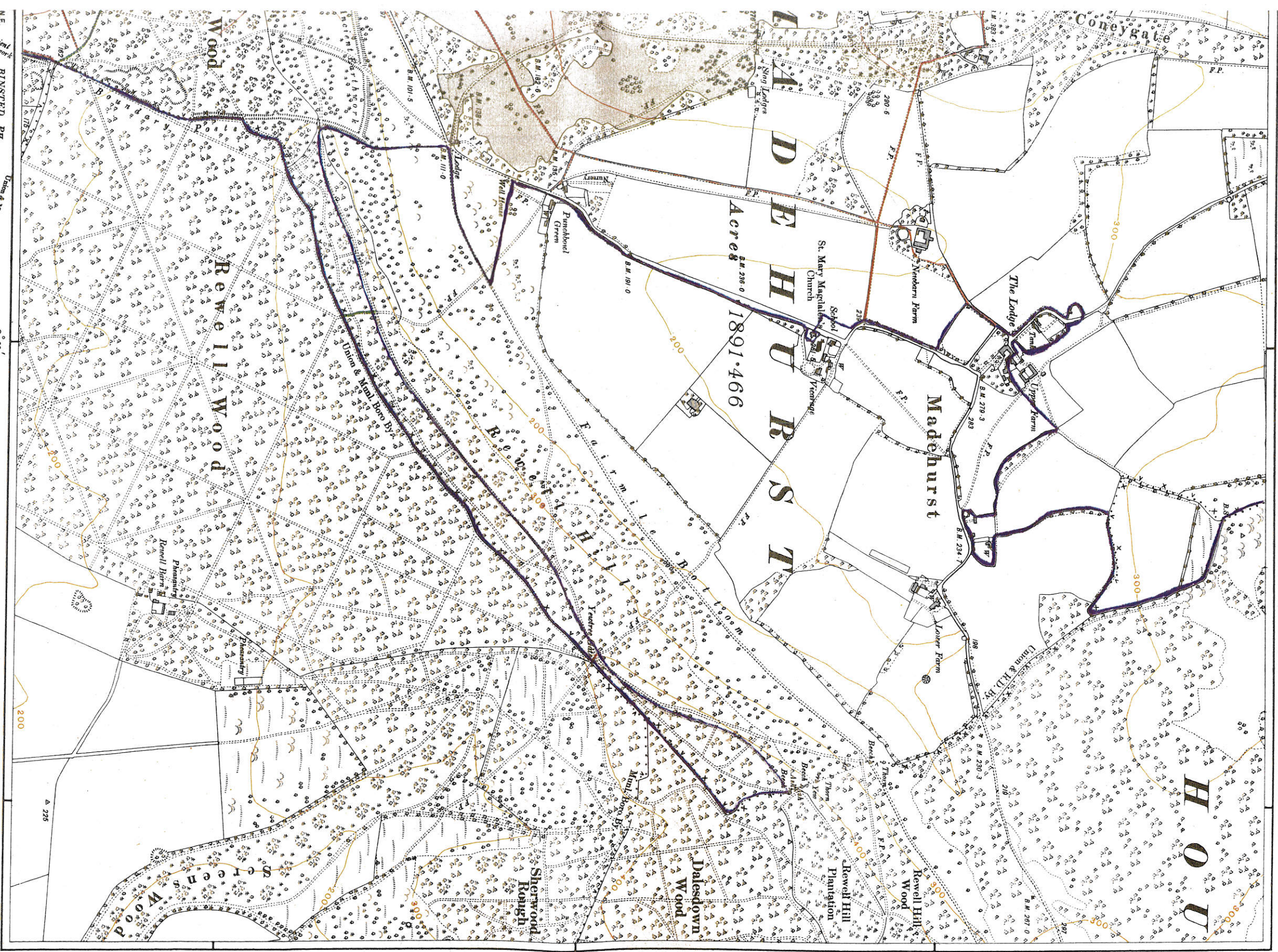
Hydrotopographical from 2500 Feet and Published by the D.I.  
 The Altitudes are given in feet above the assumed Mean Level of the Sea  
 Altitudes indicated thus (a.m.s.l.) refer to Bench Marks on Buildings. If

Crown Copy

DALE PARK ESTATE 1.

OF 1914.  
RN OR CHICHESTER DIVISION

SUSSEX [WEST] SHEET XLIX. S.E.  
Houghton Forest  
LON. 0° 35' W.



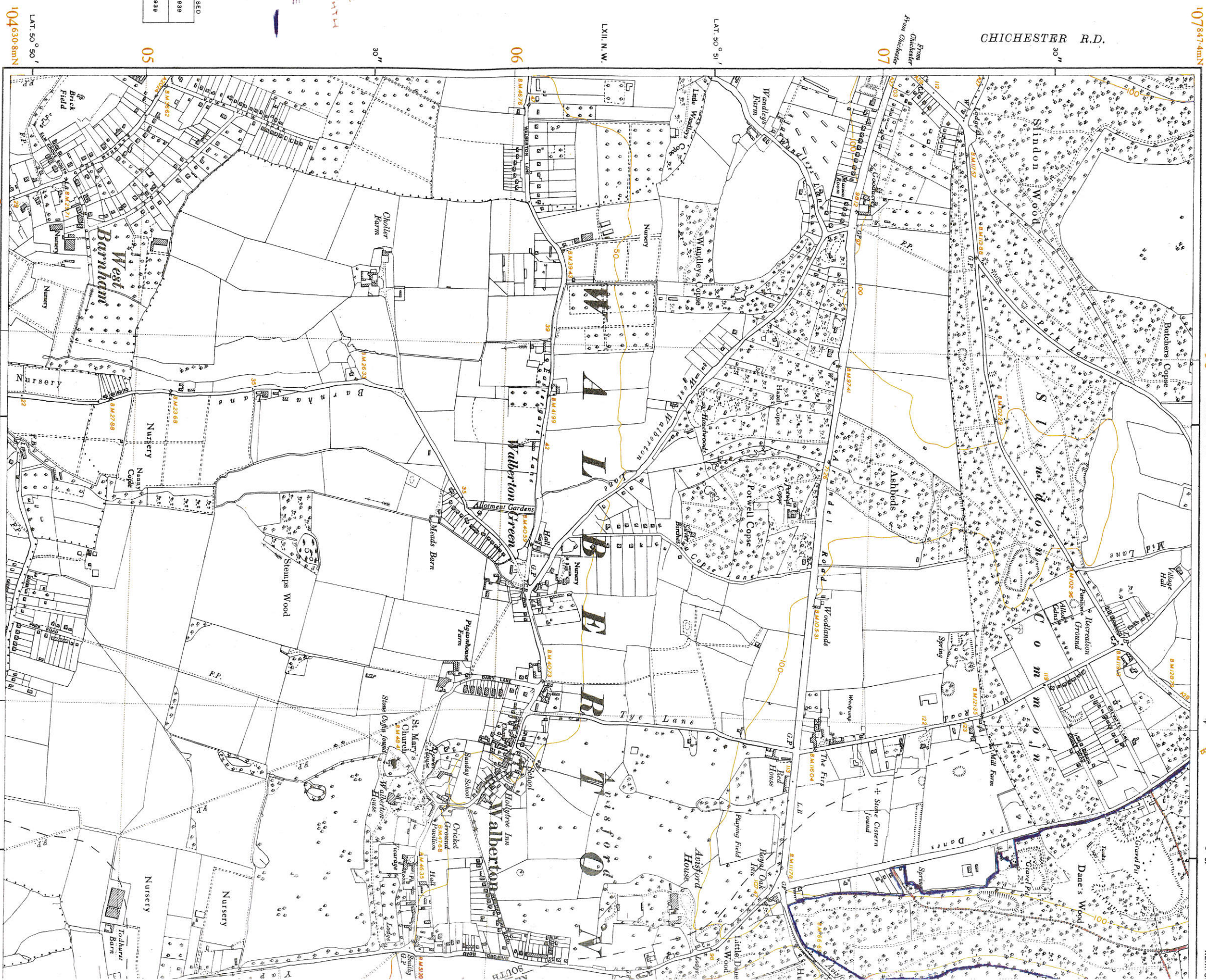
Scale - Six Inches to One Statute Mile or 880 Feet to One Inch - 10360  
10 Chains 5  
40 Perches 20  
1000 Feet 500  
1 Furlong 0 10 20 30 40 50 60 70 80 (Chains) Mile  
120 Perches 1 Mile  
5000 Feet 1 Mile

NET  
ARUNDEL MUNI. BORO.  
ARUNDEL PH.  
LON. 0° 35' W.  
SHEET XLIX.  
N.W. N.E.  
S.W. S.E.

107° 34' 44" N

49° 32' 28" 0m E

CHICHESTER R.D.



AREAS REVISED

1938	1939
1938	1939

Public Footpath  
Limits of Estate  
Marked Traces

LAT. 50° 50'  
104° 53' 08" N  
95° 31' 05" M

EASTERGATE PH. Barnham 96  
Surveyed in 1874. Partly Re-levelled in 1938. Boundaries Revised to 1-6-1950.

YAPTON PH.

CHICHESTER CO. CONST.

YAPTON PH. LXII. S

A.

CHARACTERISTICS AND SYMBOLS

- County Boundary: .....
- County or Borough Constituency Boundary: - - - - -
- Rural District Boundary: v v v v v
- Parish Boundary: . . . . .
- Catchment Area Boundary: .....

- Antiquities, Site of: +
- Arrow showing direction of flow of water: ————>
- Instrumental: ————
- Contours: Stretched: - - - - -
- Trigonometrical Station: \* \* \* \* \*
- Ministry of Transport Road Nos.: 4470, 83037

Price 4/- net



Scale - Six Inches to One Statute

The Altitudes of Bench Marks and surface heights are given in Feet above the mean NEWLYN altitudes are based on the revised primary levelling of 15

Note that the figure applies to this plan only and is approx. B.M. + 64.7 or B.M. + 64.17 indicates a bench mark on buildings, walls, etc.

B.M.'s which are likely to remain stable in an

N.B.—The representation on this map of a Road, Track, or

Printed and Published by the Director General of Crown Copyright

SOUTH DOWNS

ARUNDEL AND SHOREHAM CO. CONST.  
ARUNDEL MUNI BORO.

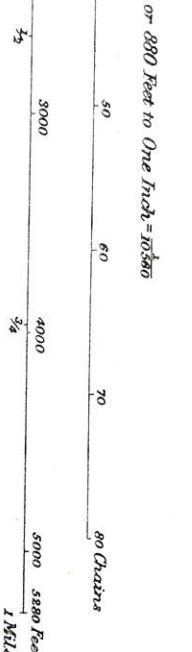
SUSSEX (WEST) SHEET LXII. N.E.  
ARUNDEL PH.

500531mE

107971.2mN



1 or 880 Feet to One Inch = 63560



THE NATIONAL GRID  
TO GIVE A GRID REFERENCE CORRECT TO 100 METRES

EXAMPLE Oakleys Cottages

East		North	
Take west edge of kilometre square in which point lies and read the large figures printed opposite this line on north or south margins.	98	Take south edge of kilometre square in which point lies and read the large figures printed opposite this line on east or west margins.	05
Estimate tenths Eastwards	7	Estimate tenths Northwards	4
Full 100 Metre Reference SU 987054			

The above Full Reference is unique. For many purposes the first grid letter can be omitted, giving a reference U 987054, which recurs at intervals of 500 Kilometres. If both grid letters are omitted, the reference is further restricted, as will usually be the case with maps on scales of one inch to the mile and larger, both the grid letters are normally omitted.

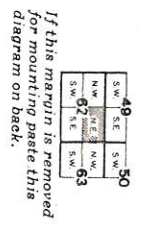


Diagram showing incidence of 100 kilometre squares

SU

LAT. 50° 55' BARLAVINGTON PH.

S. WESTERN OR CHICHESTER DIV. WESTHAMPTON U.N. & R.D. OF UPWALTHAM PH.

SLINDON PH.

SLINDON PH.

SOUTH WESTERN OR CHICHESTER DIVISION

WESTHAMPTON UNION & R.D.

Surveyed in 1874. Revised in 1910. Repro-duce 100/28. 100/29. 100/32. 100/34. 189/57. 200/58. 180/41.

CHARACTERISTICS AND SYMBOLS.

- County Boundary
- Parliamentary Division Boundary
- Union Boundary
- Rural District Boundary
- Parish Boundary
- Catchment Area Boundary
- Antiquities Site of
- Arrow showing direction of flow of water
- Contours
- Trigonometrical Station

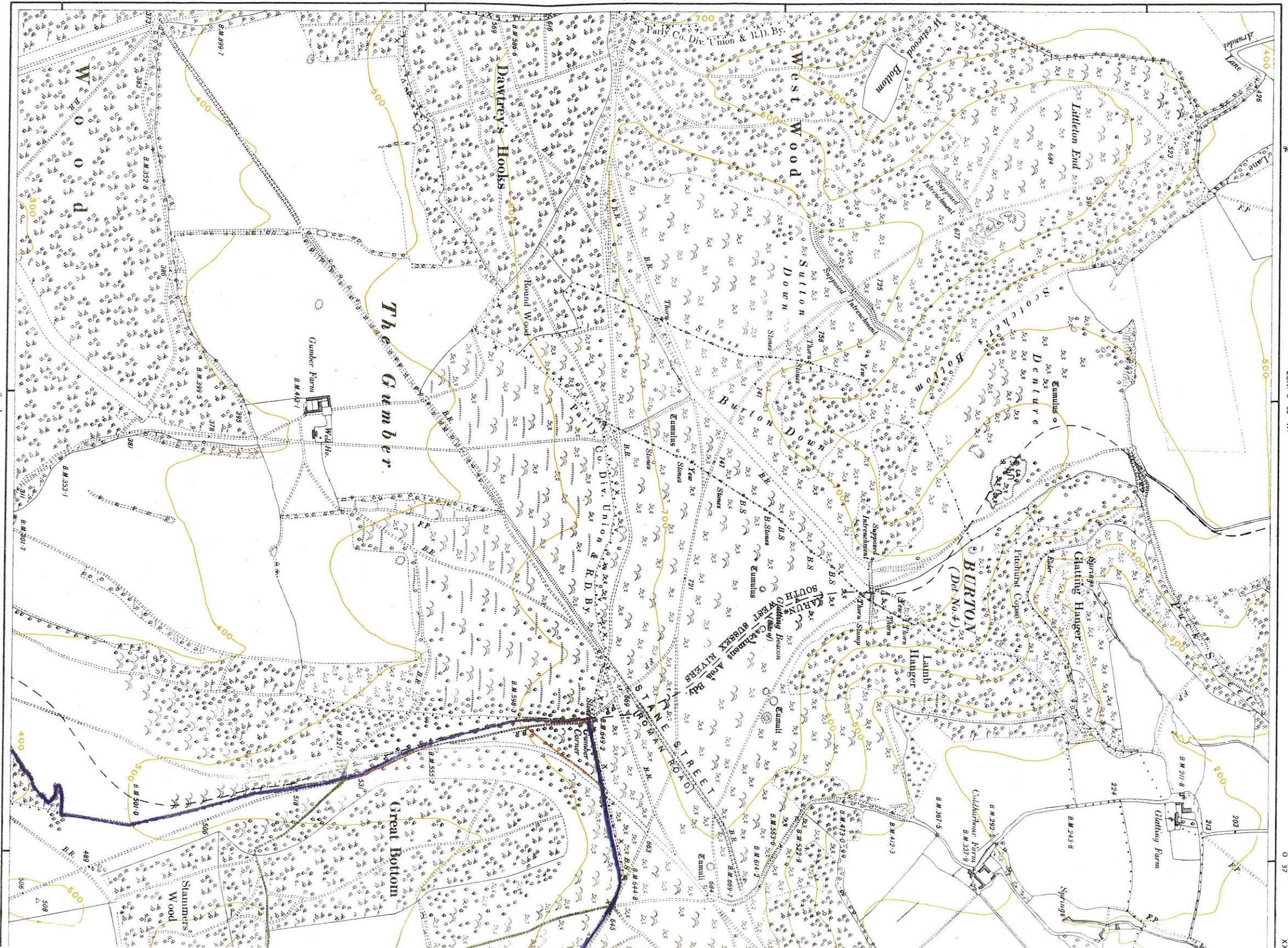
The Catchment Area Boundaries are administrative ones decided by the Minister of Agriculture and Fisheries.

Heliogravure printed from 2500 Plans and Published by the I

The Altitudes are given in feet above the assumed Mean Level of the Atlantic indicated thus (a.m.s.l.) refer to Bench Marks on Buildings

Price

Crown Co



Public Footpath

Public Path

BRIDGE

MARKED TOWN

Limits of Estate

Post Office Union & R.D. SLINDON PH. LAT. 50° 54'

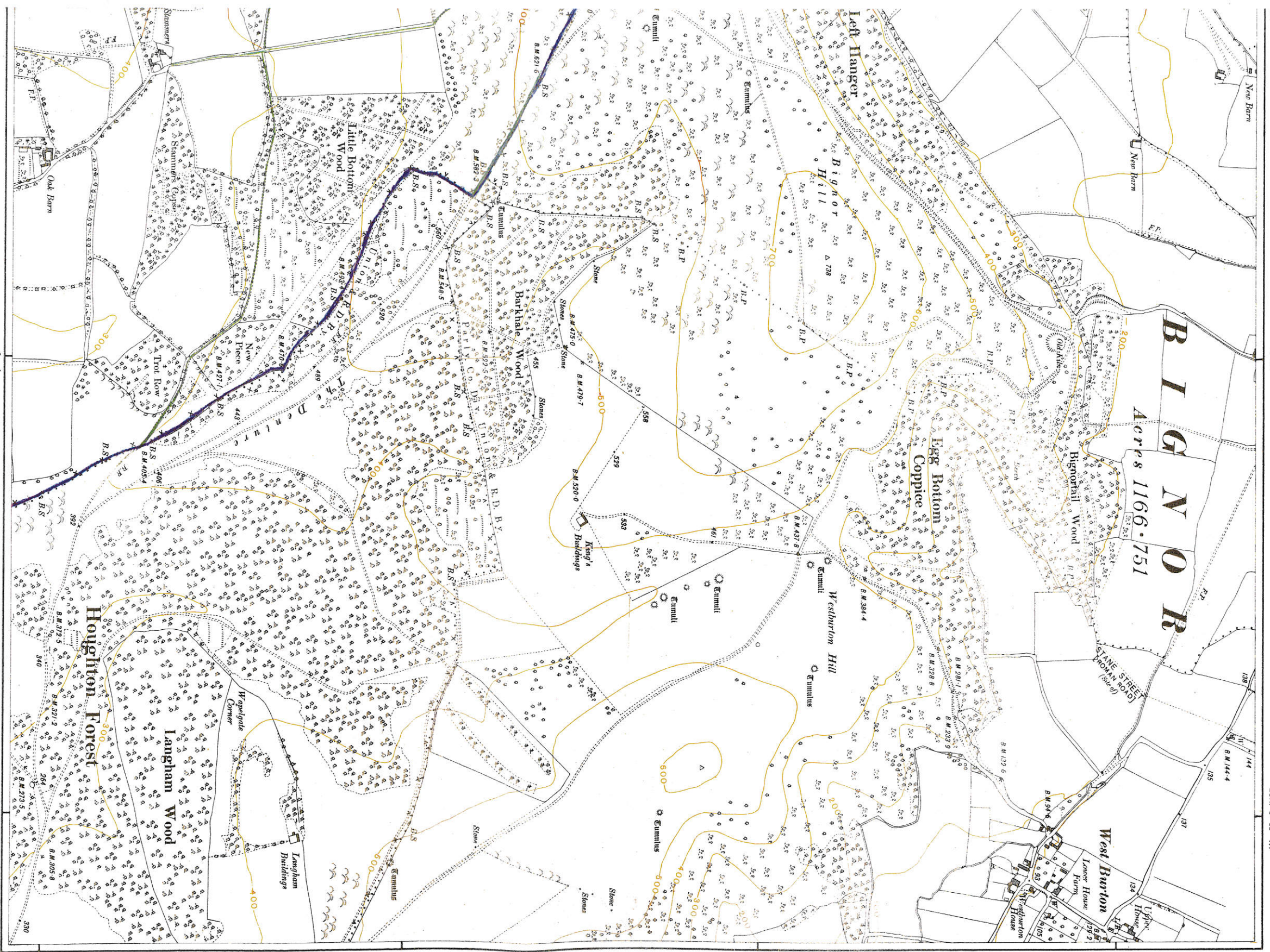
North

DALE PARK ESTATE. 3.

OF 1914.

PETWORTH UNION & R.D.

SUSSEX [WEST] SHEET XLIX. N.E.

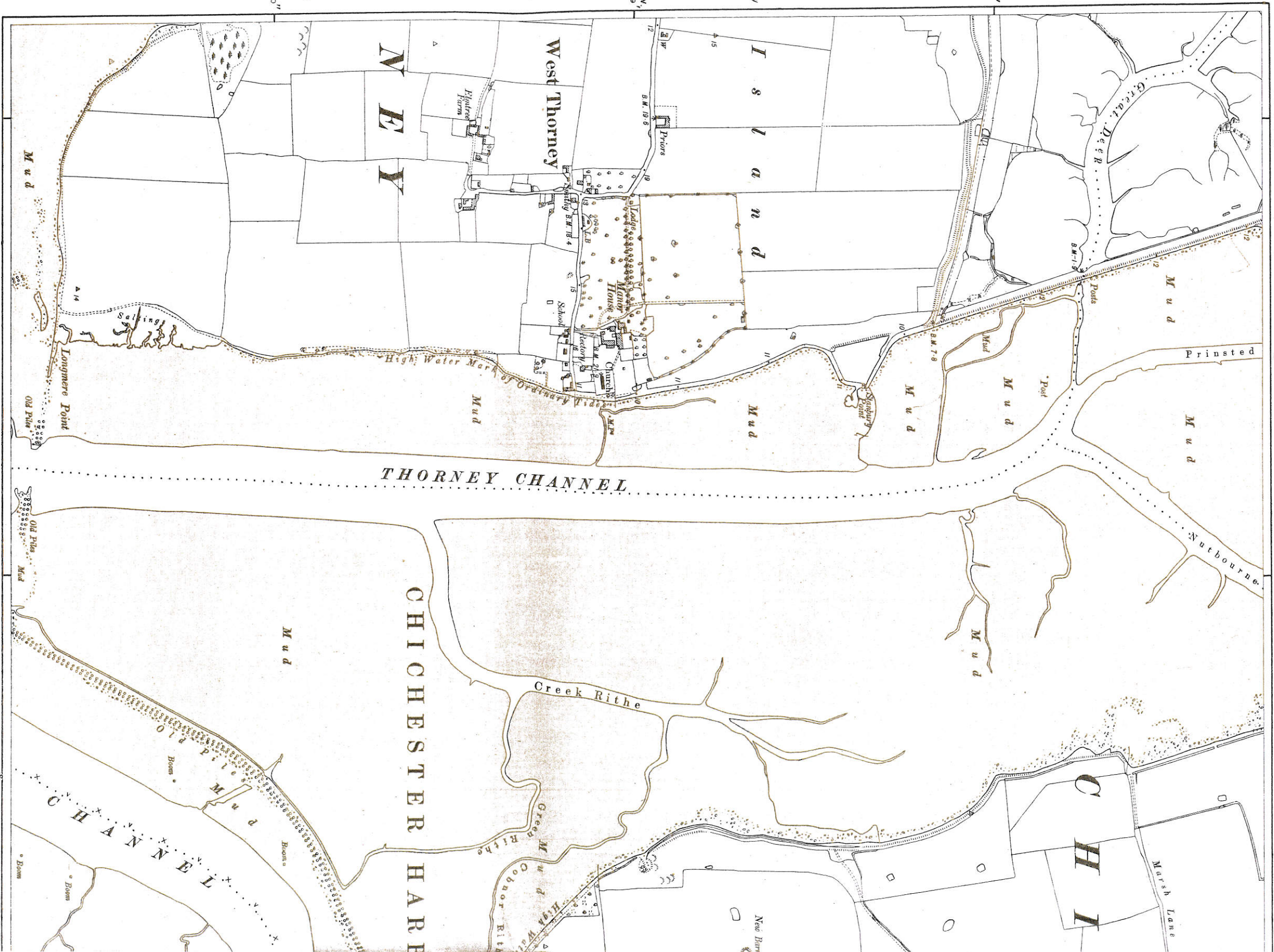


SE  
W N S  
MADEHURST PH.      EAST PRESTON UNION & R.D.  
Scale... Six Inches to One Statute-Mile or 880 Feet to One Inch - 1/2560.  
4" net.  
1000 Feet 1/2 Inch long  
1 Mile 1/4 Inch long


SHEET... XLIX.


NW	NE
SW	SE


75



WEST THOR




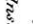

PUBLIC FOOTPATH:- 

BRIDLE PATH:- 

LIMITS OF ESTATES MARKED THUS:- 

Surveyed in 1873. Revised in 1909.  
Reprints 150/38. 150/39. 150/41.

CHARACTERISTICS AND SYMBOLS

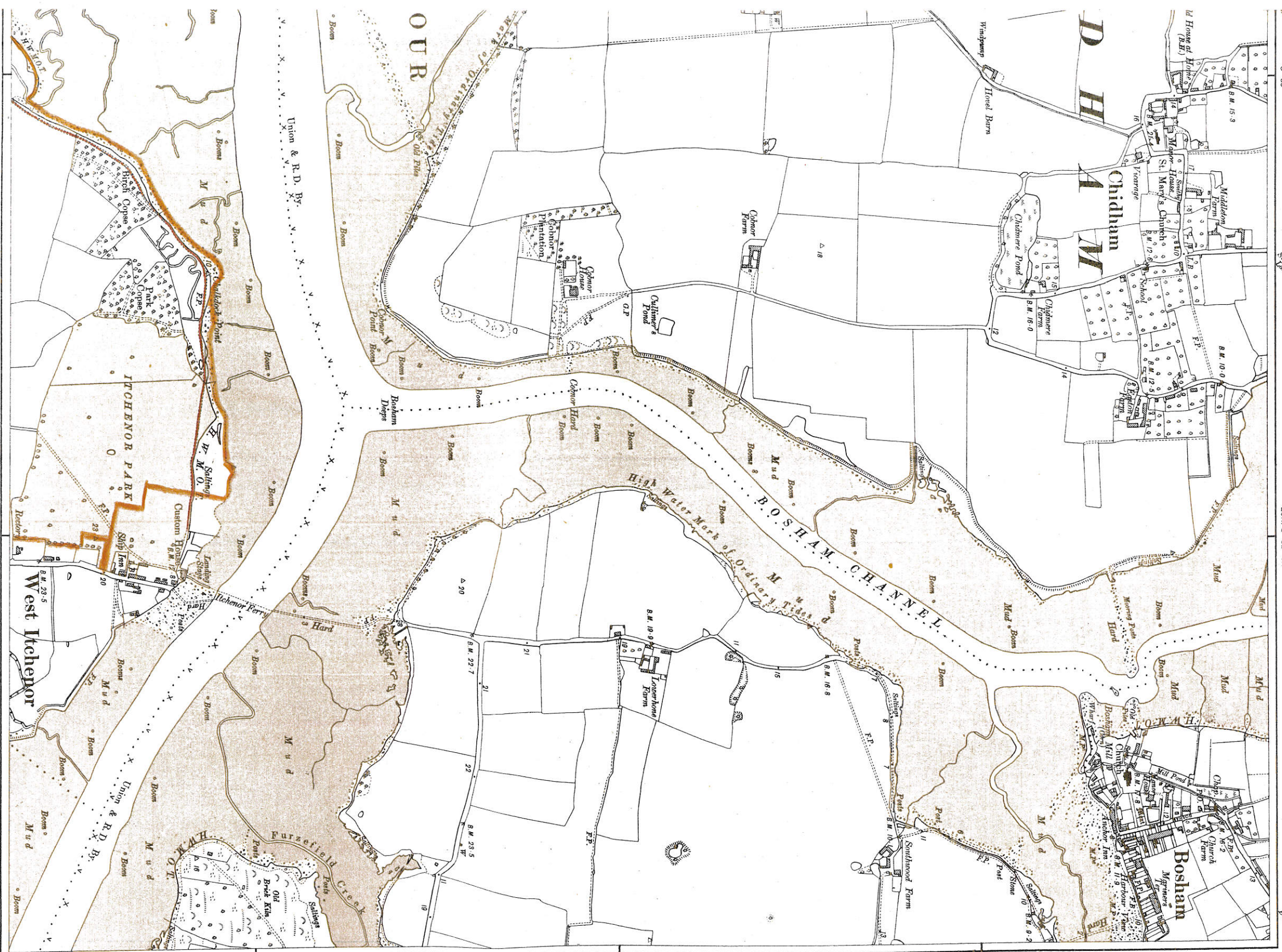
- |                                 |           |                                           |                                                                                                                                                                                               |
|---------------------------------|-----------|-------------------------------------------|-----------------------------------------------------------------------------------------------------------------------------------------------------------------------------------------------|
| County Boundary                 | — — — — — | Antiquities, Site of                      |                                                                                                              |
| Parliamentary Division Boundary | - - - - - | Arrow, showing direction of flow of water |                                                                                                            |
| Union Boundary                  | x x x x x | Contours                                  |  Instrumental<br> Sketch |
| Rural District Boundary         | v v v v v | Trigonometrical Station                   |                                                                                                            |
| Parish Boundary                 | .....     |                                           |                                                                                                                                                                                               |

For other information see Characteristic Sheet.

Price

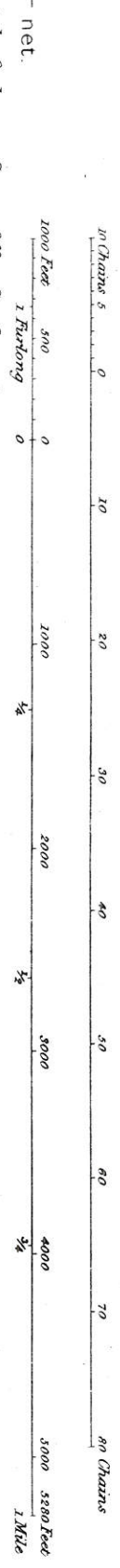
Printed and Published by the Director General  
The Altitudes are given in Feet above Ordnance Sur  
The Altitudes indicated thus (a.m. 54.7) refer to bench marks on buildings, walls, &

Crown Copy



N. E. *West Pond* 0° 53' WESTHAMPTON UNION & R.D. WEST ITCHENOR PH. LON 0° 52' W. BIRDHAM PH. BIRDHAM PH.

Scale - Six Inches to One Statute Mile or 880 Feet to One Inch - 10/32



at the Ordnance Survey Office, Southampton.

Datum, (approximate Mean Sea Level at Liverpool.)

N.B. - The representation on this map of a Road, Track or Topography is no evidence of the existence of a right of way.

Reserved.

SHEET LX.

NW	NE
SW	SE

BOSHAM PH. LXI. S.W. LAT. 50° 49'



80  
West Ichenor

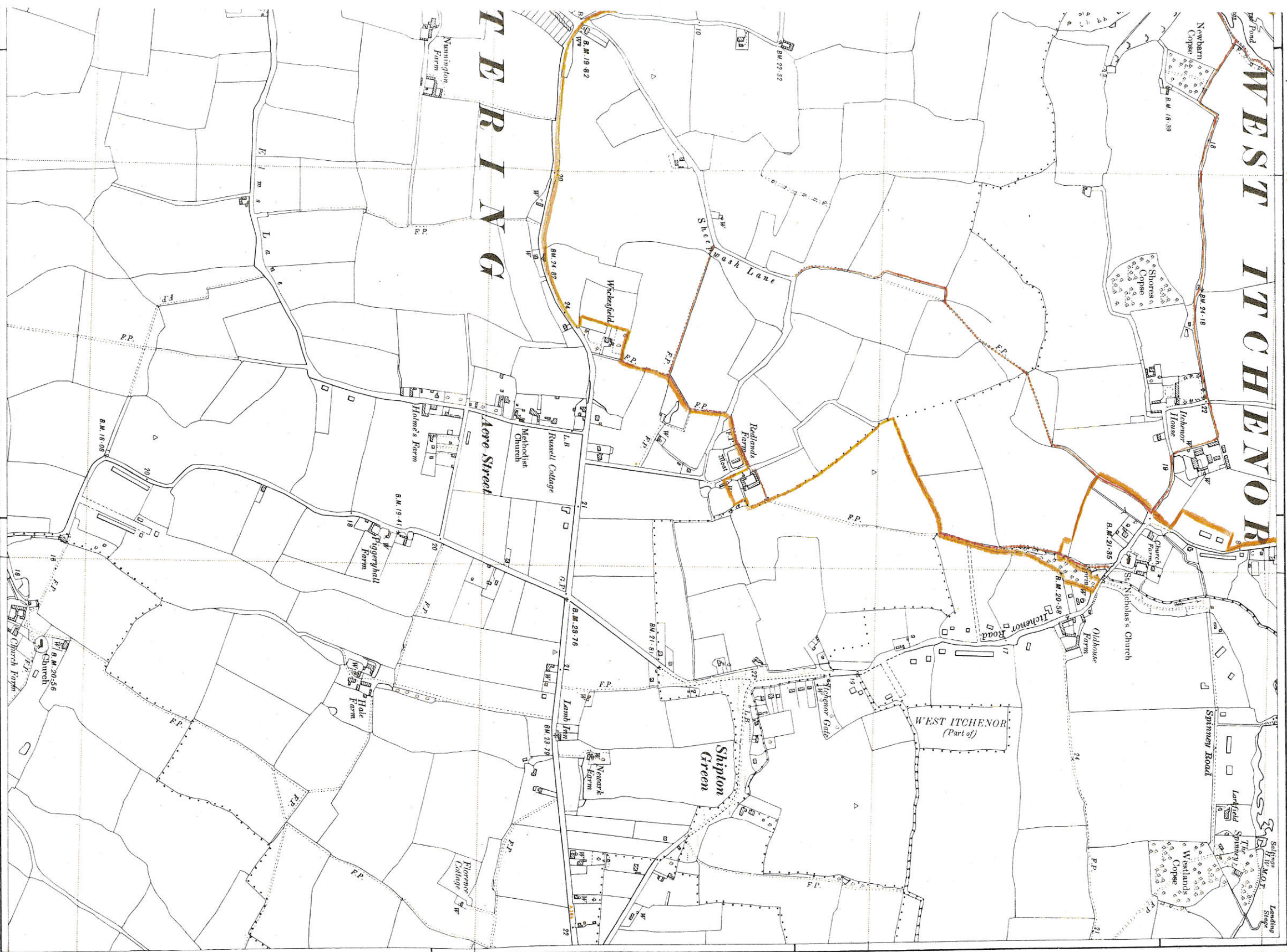
WEST ITCHENOR PH.

CHICHESTER HARBOUR

101043.2mN  
01  
LAT. 50° 48'

097826.7mN

987



0° 53' 17.00" W  
79  
One Statute Mile or 880 Feet to One Inch = 10800

0° 52' 18.00" W  
80

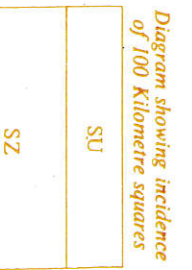
097826.7mN

987

THE NATIONAL GRID  
TO GIVE A GRID REFERENCE CORRECT TO 100 METRES

EXAMPLE		Piggyhall Farm	
See diagram on right for Grid Letters. They are SZ			
East	North	East	North
Take west edge of kilometre square in which point lies and read the large figures printed opposite this line on north or south margins.	Take south edge of kilometre square in which point lies and read the large figures printed opposite this line on east or west margins.	79	98
Estimate tenths Eastwards	Estimate tenths Northwards	799	987

The above Full Reference is unique. For many purposes the first grid letter can be omitted, giving a reference, Z79987, which recurs at intervals of 500 Kilometres. If both grid letters are omitted, the resulting reference, 9987, recurs at intervals of 100 Kilometres. When the area concerned is sufficiently restricted, as will usually be the case with maps on scales of one inch to the mile and larger, both the grid letters are normally omitted.



Notes the mean level of the sea at NEWLYN and are based on the primary levelling of 1912-21. Note that the figure applies to the plan only and is approximate to 0.1 ft. Further information on application. Further information preceded or followed by the height, refer to surface levels. The ground. The above approximate correction has been used to convert them to Newlyn Datum. Stable in areas generally liable to subsidence shown thus. Assumed mean sea level at Liverpool, and are not based on the revised primary levelling of 1912-21. Inches between the contours and the bench marks and spot levels. rd, Track, or Footpath, is no evidence of the existence of a right of way. General of the Ordnance Survey, Cheshington, Surrey, 1949.



75