

Church Commissioners for England
1 Millbank
London SW1P 3JZ

13th August 1997

Ref: CRJ/172

**STATEMENT OF LANDOWNER AS TO ADMITTED HIGHWAYS UNDER THE
HIGHWAYS ACT 1980 SECTION 31(6)**

TO : County Secretary
West Sussex County Council
County Hall
Chichester
West Sussex

Location of land : Chichester area (as shown on attached plans Nos. 1-8)

1. We, the Church Commissioners for England are the owners of the above-mentioned land which is shown edged red on plans numbered 1 - 8 hereby deposited with the County Council of West Sussex
2. We admit that the undermentioned ways and no others shown on the said plans have been dedicated as public highways as specified on attached sheet.
3. The ways coloured purple on the said plans have been dedicated as footpaths.
4. The ways coloured green on the said plans have been dedicated as bridleways.
5. The deposit shall comprise this statement and accompanying plans.

Dated the 14 day of August 1997

Signed RC Han :
(Church Commissioners for England) :

Witness VTRee :

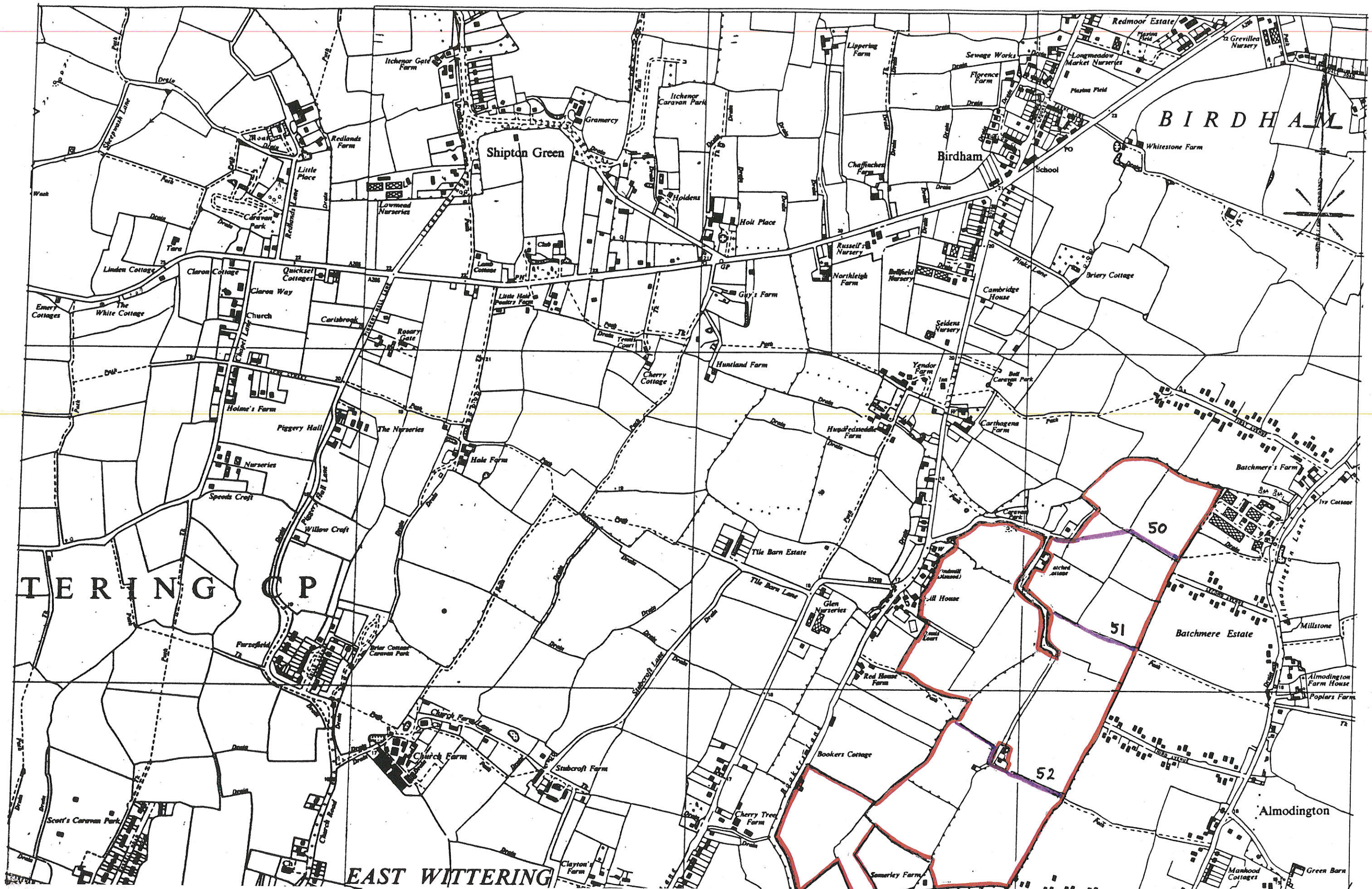
Occupation EXECUTIVE OFFICER :

Address 1 MILLBANK :
LONDON SW1P 3JZ

DESCRIPTION OF HIGHWAYS

	<u>Footpaths</u> (shown coloured purple)	<u>Starting Point</u> (Grid Ref)	<u>End Point</u> (Grid Ref)
PLAN 1	50	821985	825984
	51	821982	823981
	52	818979	821977
PLAN 2	Part 37	819008	822008
	Part 37	829014	841027
	38	824008	824004
	Part 39	827005	828006
	Part 39	828007	829008
	40	828004	829003
	41	827004	828004
	176	836031	844037
	178	838034	841034
	186	861016	862016
	188	863019	868021
190	865026	865031	
PLAN 3	No ways over land on Plan 3 have been dedicated as highways		
PLAN 4	240	757068	764068
	241	763062	764068
	3591	764068	767069
	244	768072	768073
PLAN 5	224	781045	790020
PLAN 6	296	943052	944053
	321	946051	953047
	323	953047	954043
	326	970058	974050
	327	969052	971057
	328	972054	975054
	332	970058	972057
PLAN 7	200	901025	926031
	275	892040	896047
	277	896047	895049
	279/1	899052	898055
	287	914044	918055
	358Z	914056	919058

PLAN 8	56	832988	837992
	44 pt	830001	834000
	46	841996	841999
	47	843988	844996
	44 pt	836999	843999
	60	841977	842982
	62	847983	851987
	63	847983	854983
	65	851981	854983
	82	866006	869008
	85/1	864996	869995
	90	875003	878003
	92	867992	871982
	95	859992	871999
	98	855983	856989
	99	861979	862986
	100 pt	873983	882988
104	875977	878002	
105	877988	872995	
106	878990	881987	
107	863986	870982	
	Bridleways (shown coloured green)		
PLAN 8	129	885002	892003



PLAN 1 Church Commissioners - Chichester Estate

This is the map deposited with West Sussex County Council by
Cluttons on the *20* day of *August 1997*
 under S31(6) of the Highways Act 1980.

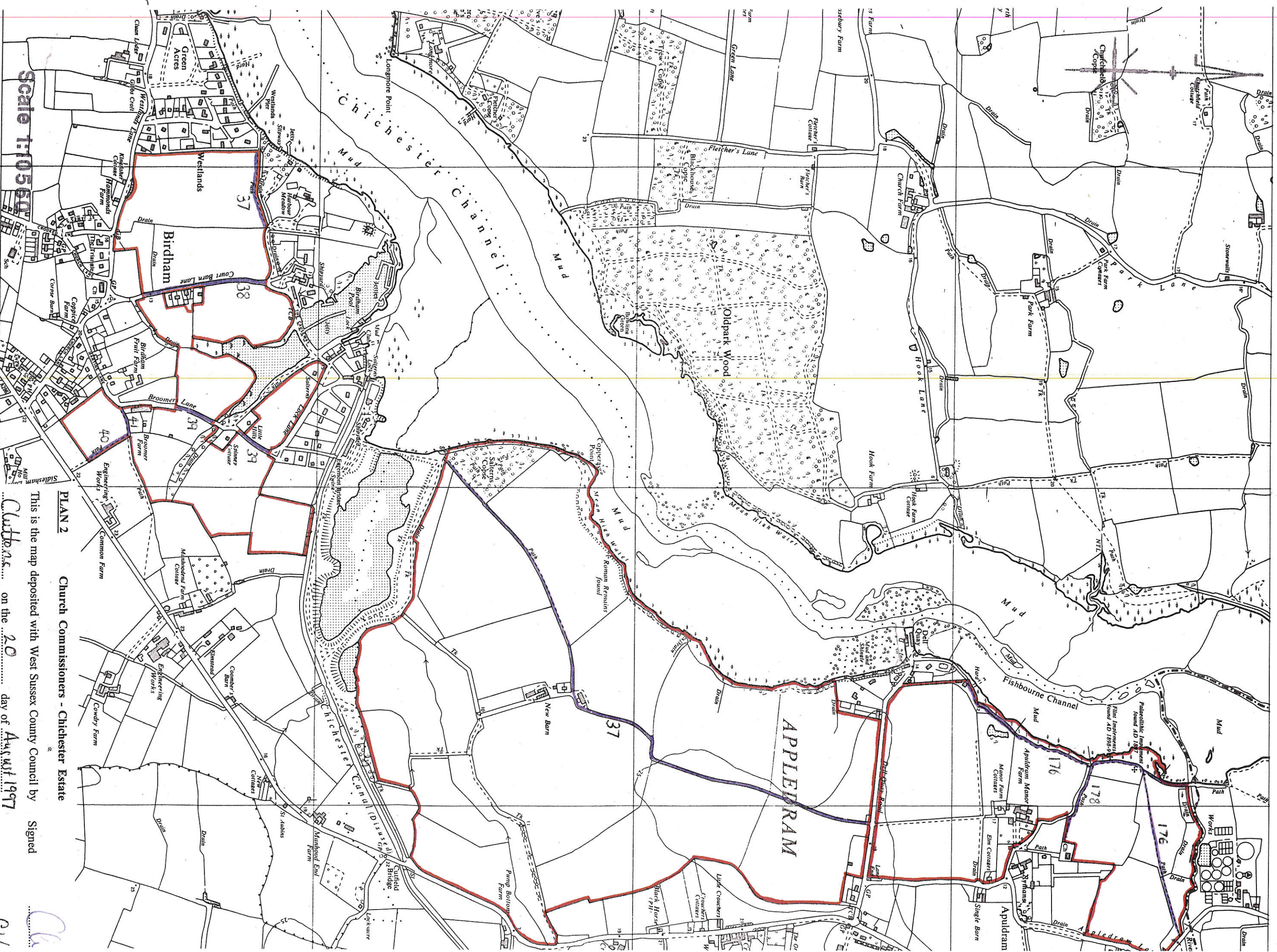
Signed
 Witness

Cluttons
P. Wells

(For and on Behalf of
 Church Commissioners)

Scale 1:10560

Reproduced from (or Based upon) the
 Ordnance Survey map with the sanction
 of the Controller of H. M. Stationery Office
 Crown Copyright reserved



Based upon the Ordnance Survey map by Cook, Hammond & Keil, Ltd. with the permission of the Controller of Her Majesty's Stationary Office. Crown Copyright reserved.

Scale 1:10560

PLAN 2 Church Commissioners - Chichester Estate

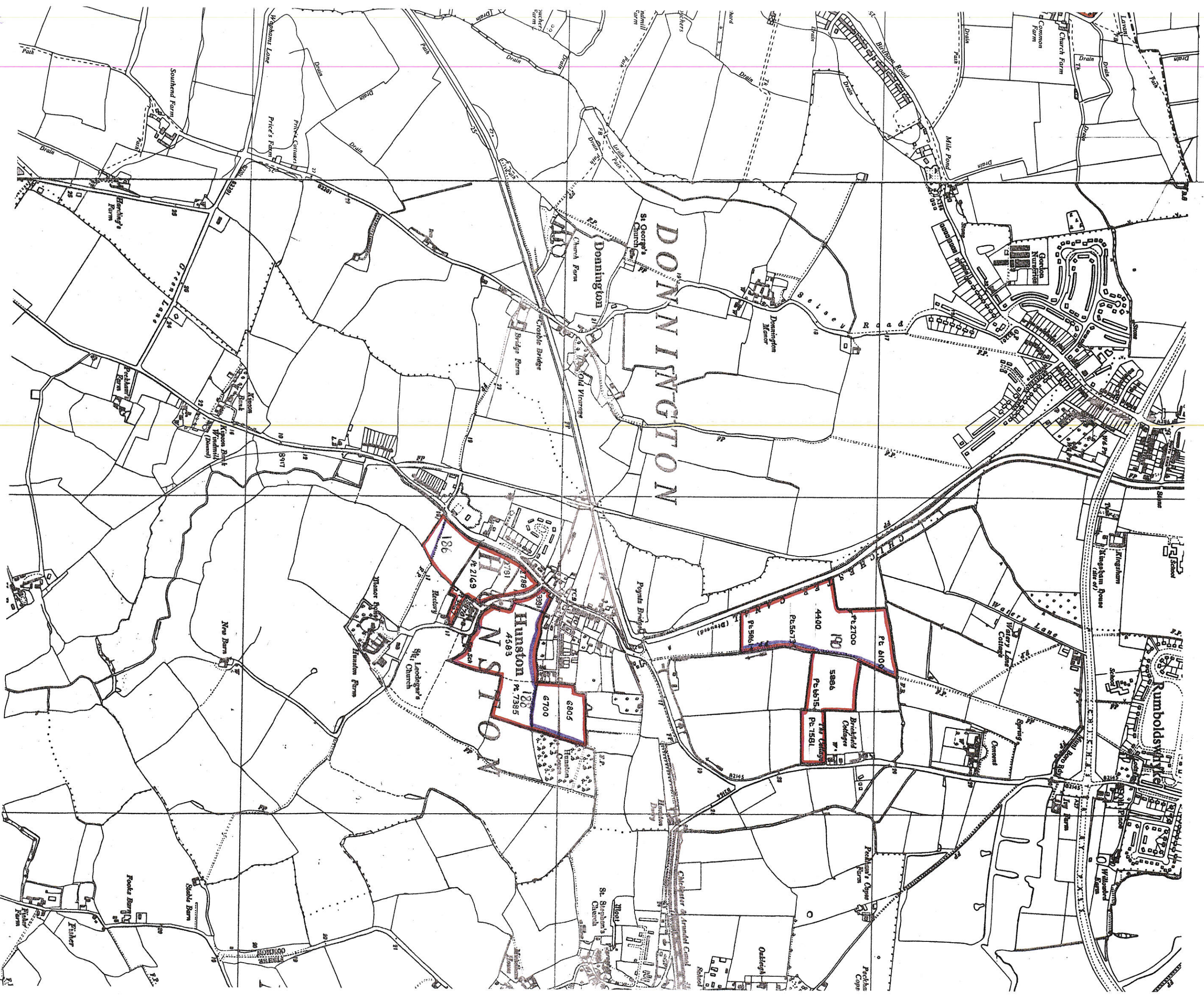
This is the map deposited with West Sussex County Council by Signed

Cluttons on the 20 day of August 1997

under S31(6) of the Highways Act 1980.

Witness

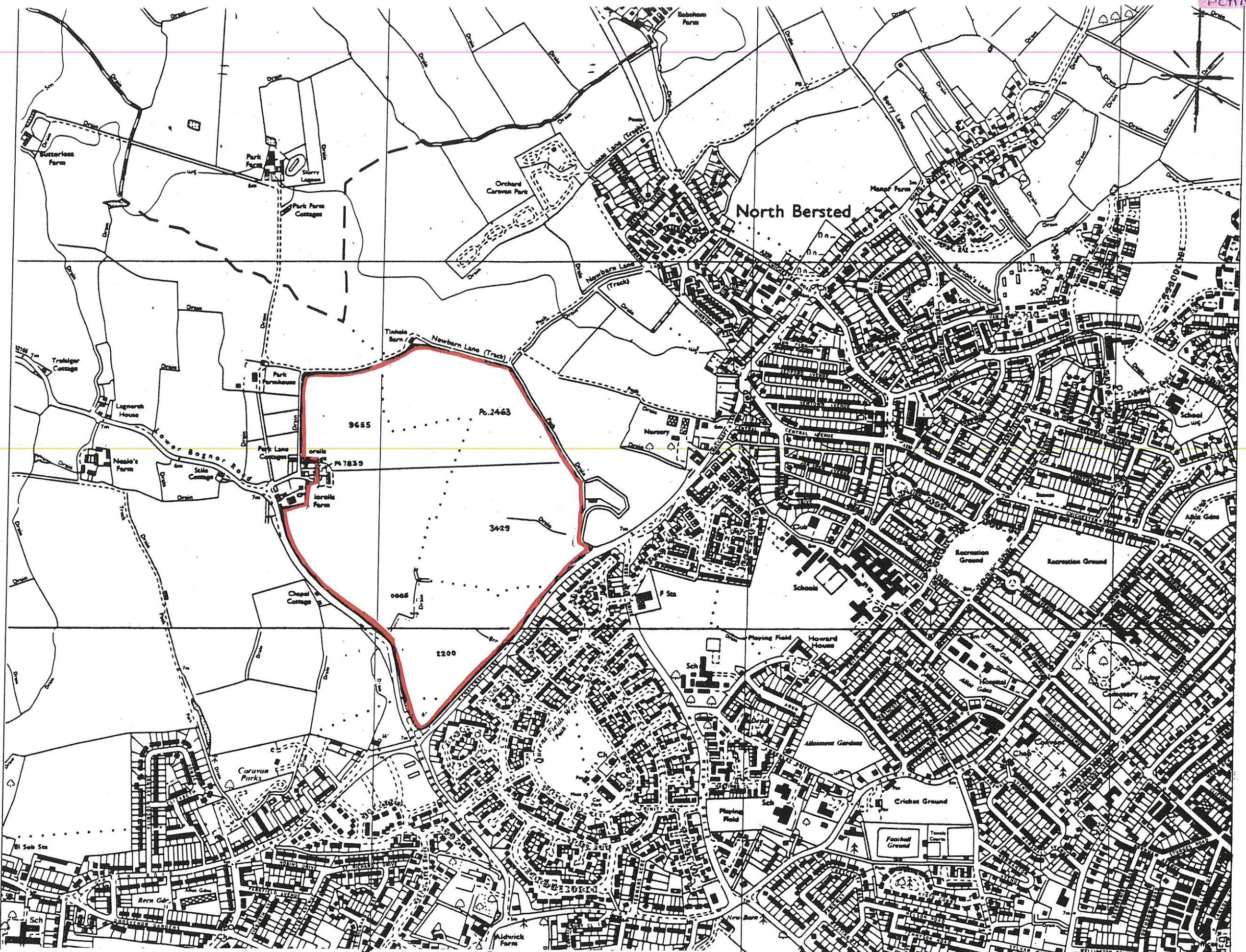
SWA



U. L. S. 1888

11

(For and on Behalf of
Church Commissioners



PLAN 3 Church Commissioners - Chichester Estate

This is the map deposited with West Sussex County Council by

Clutton on the 20 day of August 1997

under S31(6) of the Highways Act 1980.

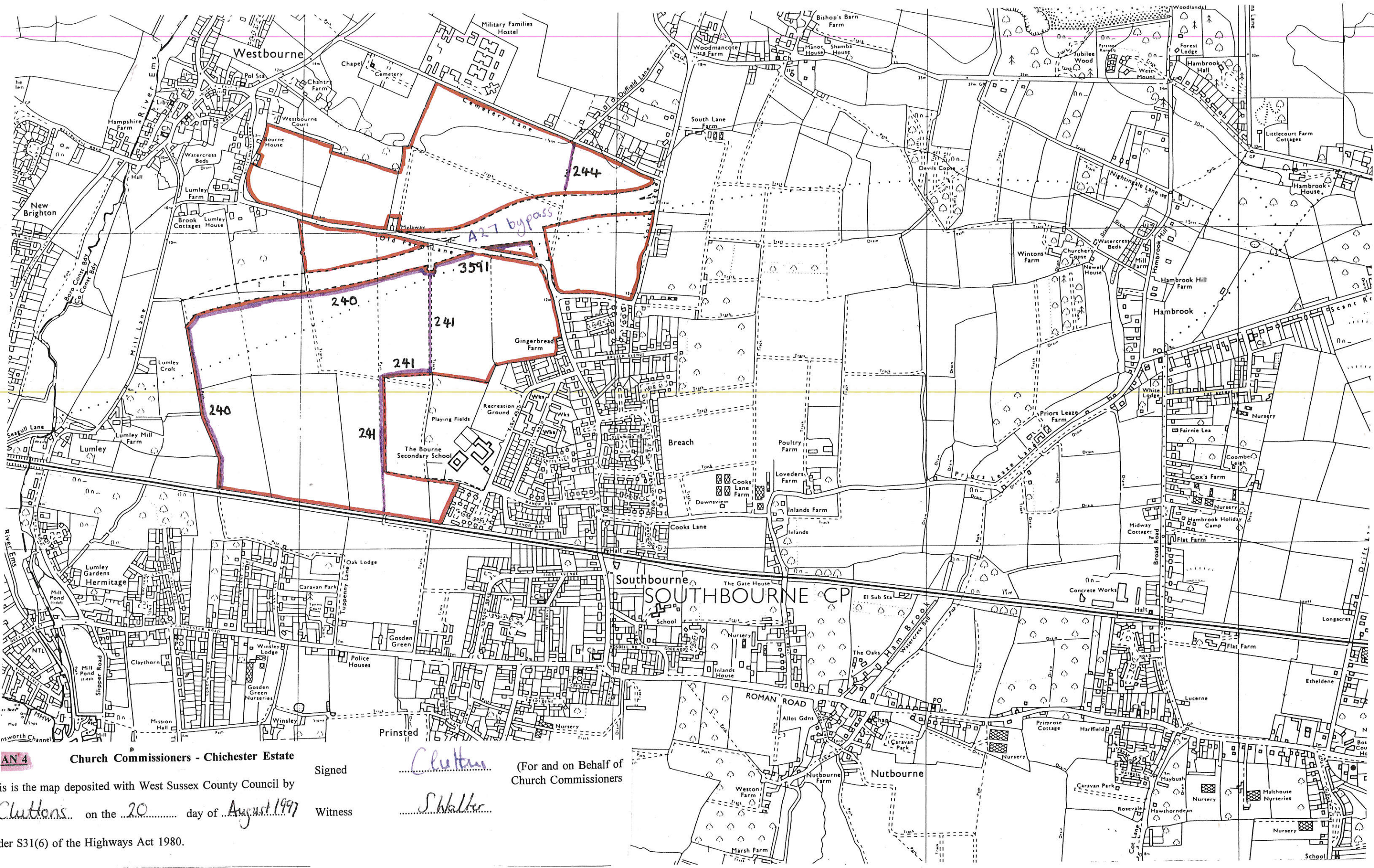
Signed

Clutton

(For and on Behalf of Church Commissioners)

Witness

S Walter



AN 4

Church Commissioners - Chichester Estate

Signed

Clutton

(For and on Behalf of Church Commissioners)

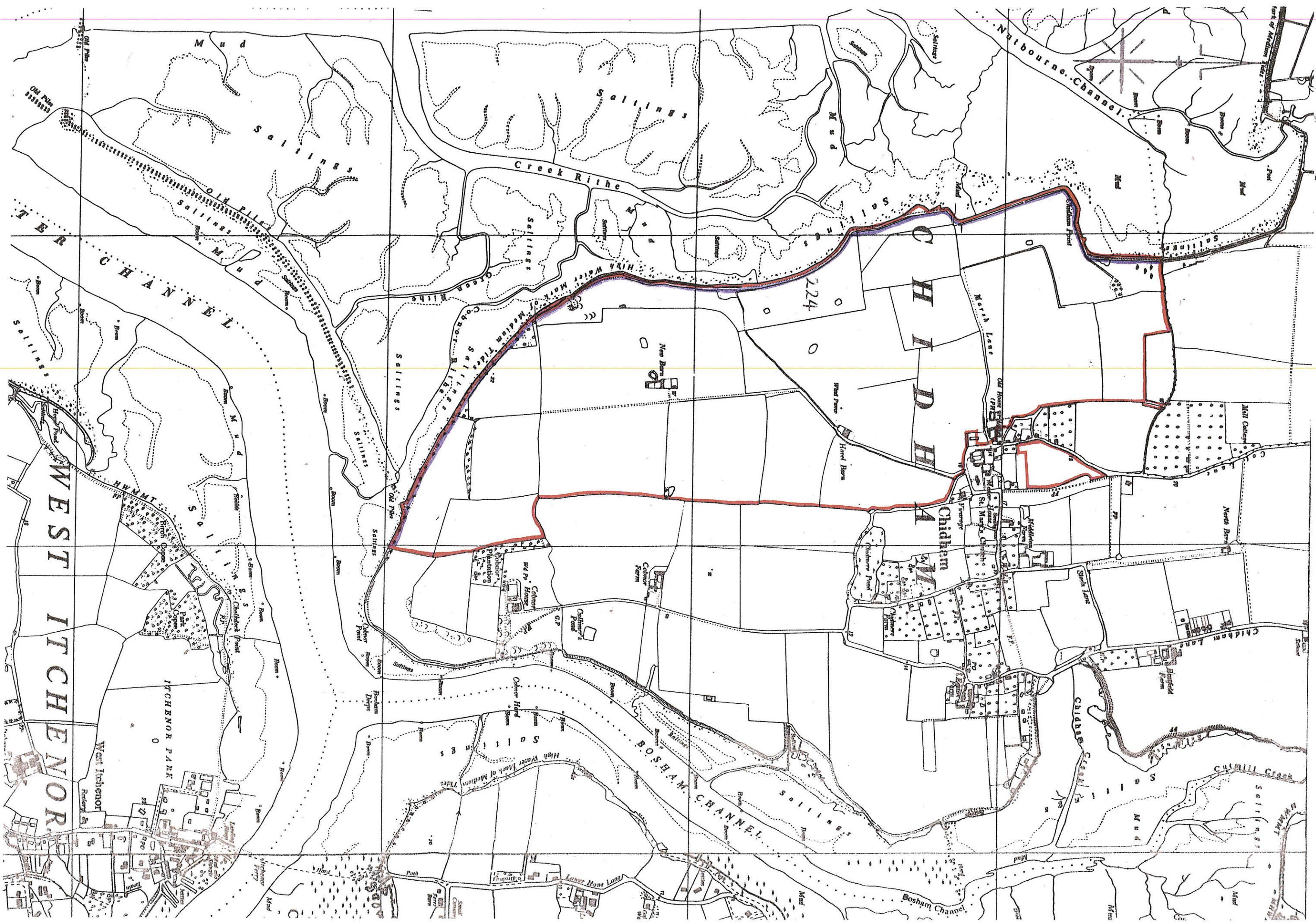
This is the map deposited with West Sussex County Council by

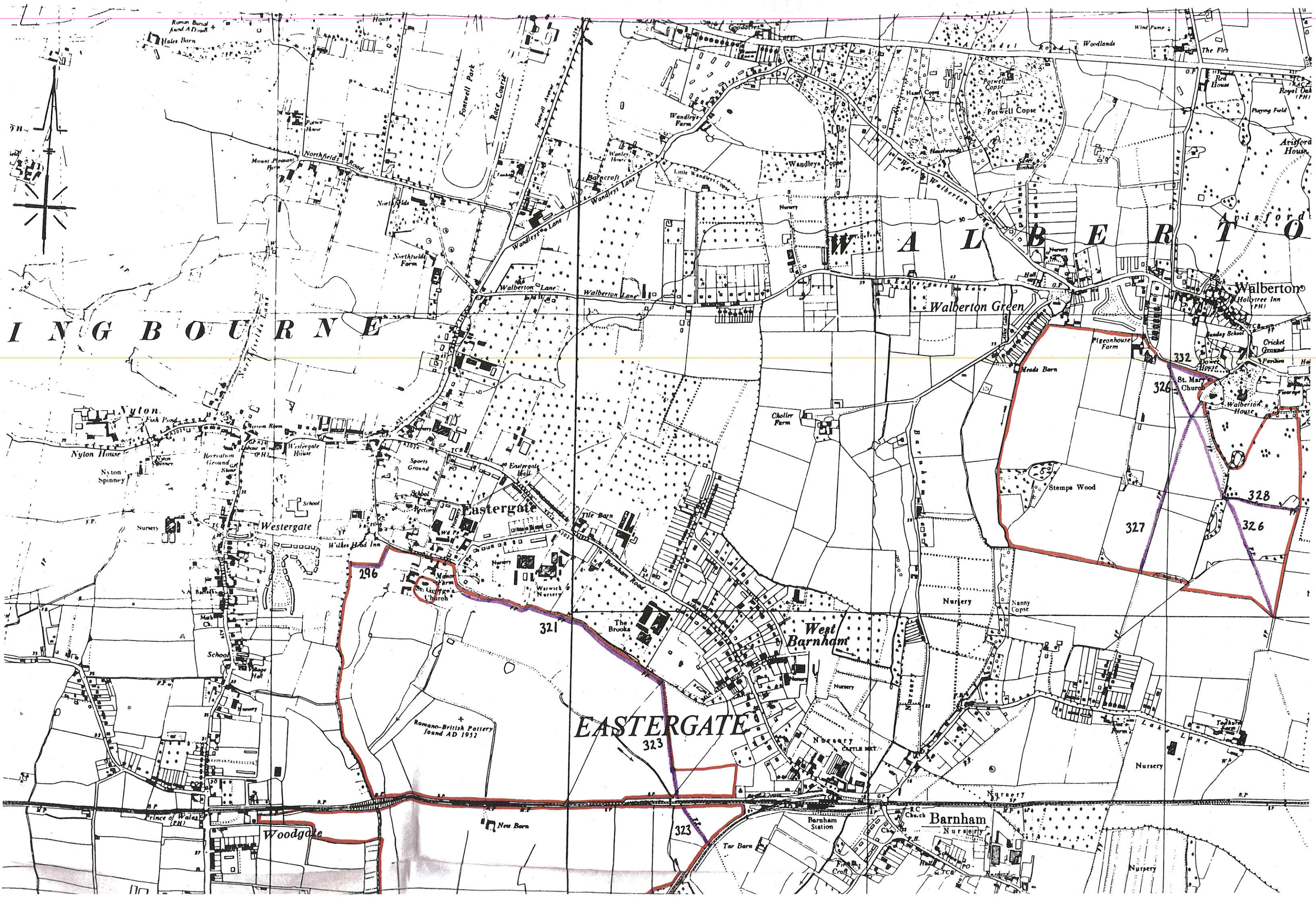
Clutton on the 20 day of August 1997

Witness

S. Walker

under S31(6) of the Highways Act 1980.





INGBOURNE

WALBERTON

EASTERGATE

Roman Burial
found AD 1908

Nylon

Eastergate

West
Barnham

Barnham

Walberton

326

328

327

326

321

323

323

296

Prince of Wales
(PH)

Woodgate

New Barn

Tar Barn

Barnham
Station

Barnham
Nursery

Nursery

Nursery

Nursery

Nanny
Copse

Choller
Farm

Meads
Barn

Pigeonhouse
Farm

332

326

332

332

332

332

332

332

332

332

332

332

332

332

332

332

332

332

332

332

332

332

332

332

332

332

332

332

332

332

332

332

332

332

332

332

332

332

332

332

332

332

332

332

332

332

332

332

332

332

332

332

332

332

332

332

332

332

332

332

332

332

332

332

332

332

332

332

332

332

332

332

332

332

332

332

332

332

332

332

332

332

332

332

332

332

332

332

332

332

332

332

332

332

332

332

332

332

332

332

332

332

332

332

332

332

332

332

332

332

332

332

332

332

332

332

332

332

332

332

332

332

332

332

332

332

332

332

332

332

332

332

332

332

332

332

332

332

332

332

332

332

332

332

332

332

332

332

332

332

332

332

332

332

332

332

332

332

332

332

332

332

332

332

332

332

332

332

332

332

332

332

332

332

332

332

332

332

332

332

332

332

332

332

332

332

332

332

332

332

332

332

332

332

332

332

332

332

332

332

332

332

332

332

332

332

332

332

332

332

332

332

332

332

332

332

332

332

332

332

332

332

332

332

332

332

332

332

332

332

332

332

332

332

332

332

332

332

332

332

332

332

332

332

332

332

332

332

332

332

332

332

332

332

332

332

332

332

332

332

332

332

332

332

332

332

332

332

332

332

332

332

332

332

332

332

332

332

332

332

332

332

332

332

332

332

332

332

332

332

332

332

332

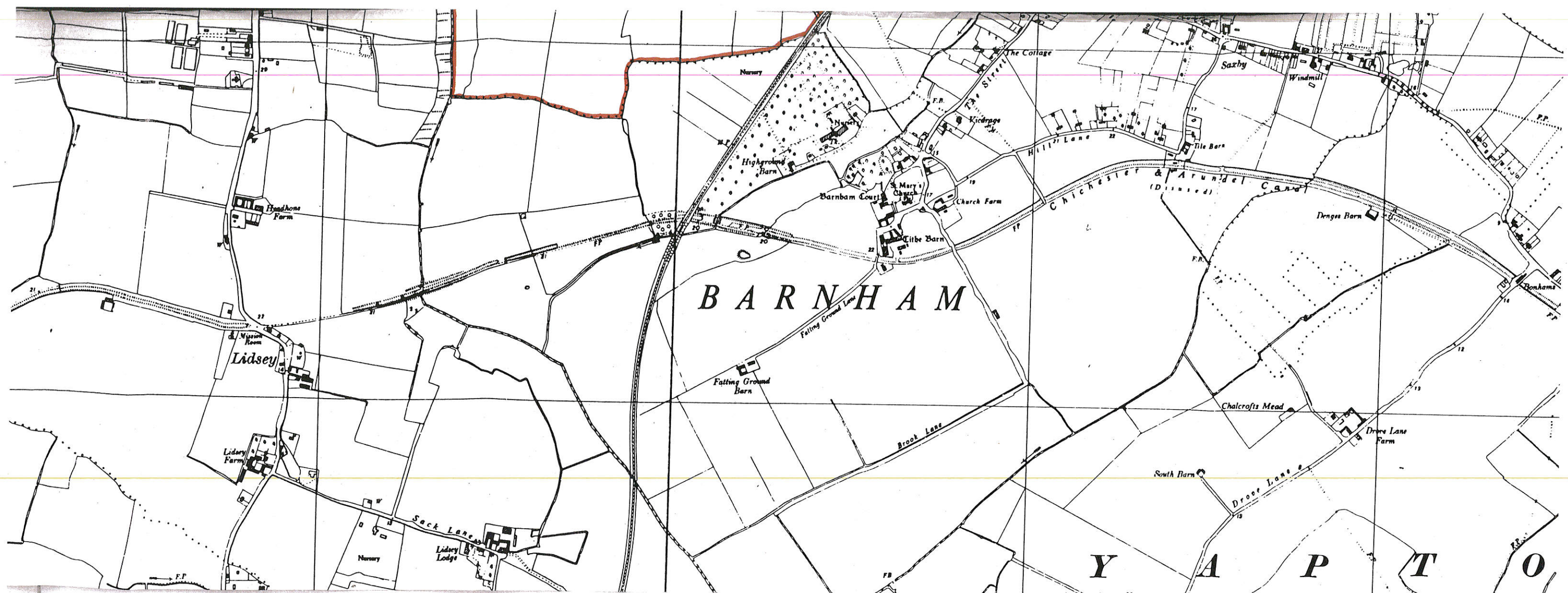
332

332

332

332

332



BARNHAM

Lidsey

Sack Lane

Falling Ground Lane

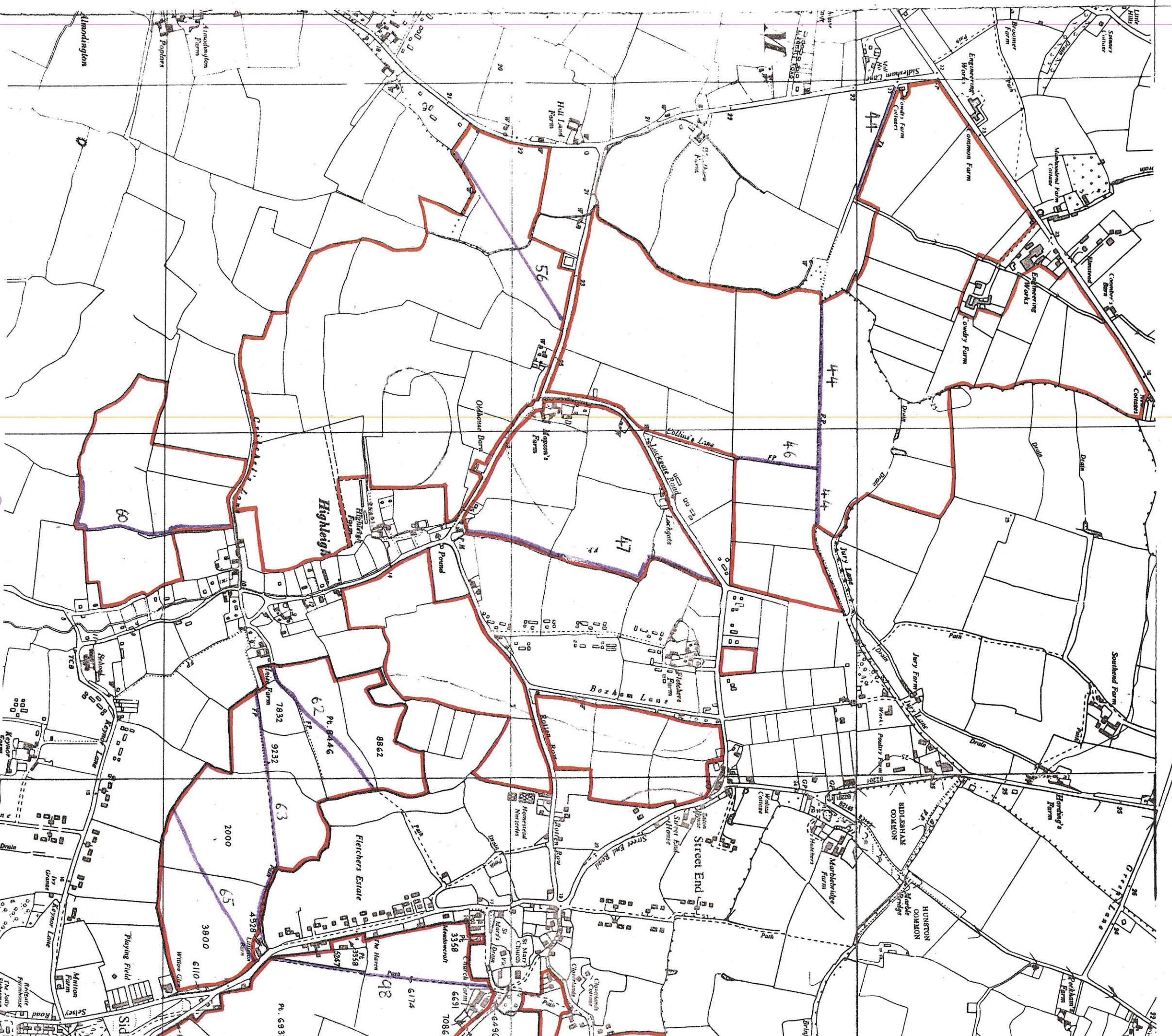
Brook Lane

Chalcrafts Mead

South Barn

Drove Lane

YAPTO



PLAN 8

Church Commissioners - Chichester Estate

Signed

(For and on Behalf of
Church Commissioners)

This is the map deposited with West Sussex County Council by

Cudhens on the 20 day of August 1997, Witness

Chapman
White

under S31(6) of the Highways Act 1980.

