

Plotted 11 Mar 2008 from Ordnance Survey digitally derived data.

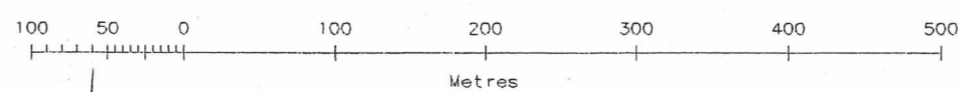
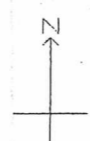
Produced using significant survey information from Ordnance Survey large scale digital data, and incorporated into OS Landplan Feb 2008.

© Crown copyright 2008.

Reproduction in whole or in part is prohibited without the prior written permission of Ordnance Survey.

Administrative boundaries revised to Oct 2007.

Additional boundaries information:



Scale 1:5000

This OS Landplan plot is enlarged from derived mapping produced at 1:10000 scale. Contours are at 5 metre intervals.

Heights are given in metres above Newlyn Datum. The representation of a road, track or path is no evidence of a right of way.

The alignment of tunnels is approximate.

An OS Landplan symbols leaflet is available on request from Ordnance Survey Mapping and Data Centres.

Ordnance Survey, the OS Symbol and OS Landplan are registered trade marks of Ordnance Survey, the national mapping agency of Great Britain.

Plot centre coordinates: 479175 100365  
Supplied by: Kall Kalk  
Plot serial number: 00020400